

Product datasheet for RC212241

HOATZ (NM_001100388) Human Tagged ORF Clone

Product data:

Product Type: Expression Plasmids
Product Name: HOATZ (NM_001100388) Human Tagged ORF Clone
Tag: Myc-DDK
Symbol: HOATZ
Synonyms: C11orf88
Mammalian Cell Selection: Neomycin
Vector: pCMV6-Entry (PS100001)
E. coli Selection: Kanamycin (25 ug/mL)
ORF Nucleotide Sequence: >RC212241 representing NM_001100388
Red=Cloning site Blue=ORF Green=Tags(s)

TTTTGTAATACGACTCACTATAGGGCGGCCGGAATTCGTCGACTGGATCCGGTACCGAGGAGATCTGCCGCCGCGATCGCC

ATGGAACGGGACCCAGCGAAGAACCTAGCGGCCGAAAAGAGTCCCAGGAAATGTGCCCCGGGATTAC
TGGTATTTGCTGGCTCCTCGGAACAAGATGCCAATTGGCTAAGCAGTTCTGGATCTCGGCGTCGATGTA
TCCCCCTAGCGAATCTCAGCTGGTGTGCTGCGCAGAGACAGCAGTCAGCGTCTGCCGGTGGCGGCCCAGG
AGGAGCAGAGGGTCTGAAAACAGCCACTCTCGCAGTCTTTTACCTTGGCAGTAACAAAATAGAGACA
TCTTTGCCGAAGCCCTAAAGATACAGGAATCTGAGGAGAAAGTAAAGTATCTCCAAAAGGCTAAAACAAG
AGAAGAGATTCTCCAACCTTAAGAAAACAAGAGAAGAAAGGATCTCGAAAGAACTGATTTCCCTCCG
TATAAACCAAAAGCCAAAAGAACAAGCAAAGAAAGTGGTATCAGAGTCAGATAAAGAGGACCAAGAAG
AAGTCAAACCTTTGGAC

ACGCGTACGCGGCCGCTCGAGCAGAACTCATCTCAGAAGAGGATCTGGCAGCAATGATATCCTGGATT
ACAAGGATGACGACGATAAGGTTTAA

Protein Sequence: >RC212241 representing NM_001100388
Red=Cloning site Green=Tags(s)

METGPSEEPSGRKESQEMCPPGLLVFAGSSEQDANLAKQFWISASMYPPSESQLVLRDSSQRLPVARPR
RSRGSSENSHSQSFLASNKNRDIFAEALKIQESEEKVKYLQKAKTREEILQLLRKQREERISKELISLP
YKPKAKEHKAKKVVSSESDKEDQEEVKTLD

TRTRPLEQKLISEEDLAANDILDYKDDDDKV

Chromatograms: https://cdn.origene.com/chromatograms/ja1452_f01.zip



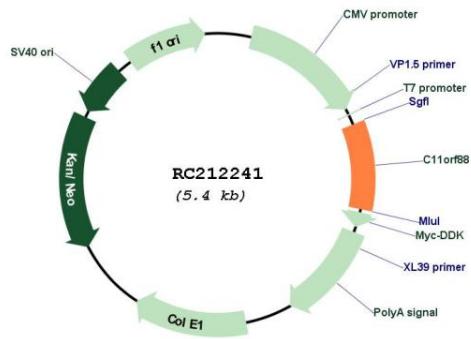
[View online »](#)

Cytogenetics: 11q23.1

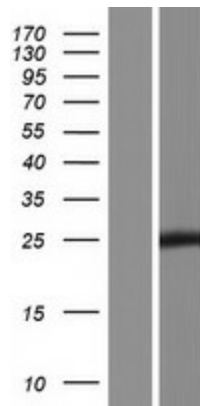
MW: 19.2 kDa

Gene Summary: Required for motile ciliogenesis and flagellar genesis by mediating the maturation of the glycolytic enzyme ENO4.[UniProtKB/Swiss-Prot Function]

Product images:



Circular map for RC212241



Western blot validation of overexpression lysate (Cat# [LY420240]) using anti-DDK antibody (Cat# [TA50011-100]). Left: Cell lysates from untransfected HEK293T cells; Right: Cell lysates from HEK293T cells transfected with RC212241 using transfection reagent MegaTran 2.0 (Cat# [TT210002]).