

Product datasheet for **RC212240**

TBL1Y (NM_134259) Human Tagged ORF Clone

Product data:

Product Type:	Expression Plasmids
Product Name:	TBL1Y (NM_134259) Human Tagged ORF Clone
Tag:	Myc-DDK
Symbol:	TBL1Y
Synonyms:	DFNY2; TBL1
Mammalian Cell Selection:	Neomycin
Vector:	pCMV6-Entry (PS100001)
E. coli Selection:	Kanamycin (25 ug/mL)



[View online »](#)

ORF Nucleotide
Sequence:

>RC212240 ORF sequence
Red=Cloning site Blue=ORF Green=Tags(s)

TTTTGTAATACGACTCACTATAGGGCGGCCGGAATTCGTCGACTGGATCCGGTACCGAGGAGATCTGCC
GCCCGGATCGCC

ATGAGCATAACCACTGACGAGGTGAACCTTCTGGTTTATCGGTATCTCCAGGAGTCAGGTTTTCTCACT
CGGCTTTACGTTTGGGATCGAGAGCCACATCAGCCAGTCCAACATCAATGGGACTAGTGCCACCGTC
TGCCCTCATCTCCATTCTCCAGAAGGGACTGCAGTATGTAGAGGCTGAGATAAGCATCAACAAGGATGGC
ACAGTGTTCGACAGCCGCCCTATAGAGTCCCTGTCCCTGATAGTTGCTGTGATTCTGATGTGGTGCAGA
TGCGGCAGCAGGCATTTGGAGAGAAGCTCACTCAGCAGCAAGCCAGTGCAGCAGCCACAGAGGCATCAGC
AATGGCAAAGGCGCAACCATGACCCAGCTGCTATTTCCAGCAAAAATCCTCCAAGAACCAGAGAGGCC
ACAGTGAACGGGAAGAGAATGGAGCACATGAAATCAATAATCACTCAAAGCCAATGAAATAGATGGGG
ATGTTGAGATCCACCAACAAAGCCACAGTCTTCGGGGCCACGAGTCTGAGGTGTTTCATTTGTCCCTG
GAACCCTGTCAGTATTTGCTAGCCTCTGGATCTGGAGACTCAACTGCAAGGATATGGAACCTGAATGAG
AATAGCAACGGGGCTCCACCCAGCTCGTGTGAGACATTGTATACGAGAAGGGGGCAGCAGCTCCCAA
GTAATAAAGATGTCACCTCACTGGACTGGAACAGTGTGGAACACTATTGGCTATGGGTTTATATGATGG
TTTCGCAAGAATAGGACAGAAAATGGTAACCTGGCCAGCACCTTAGGCCAACATAAAGGCCCATCTTC
GCTCTGAAATGGAACAAAAGGGGAATTATGTTTTGAGTGTGGTGTAGACAAAACAATAATTTGGG
ATGCTCACACAGGAGAAGCCAAACAGCAGTTTCCTTTTCATTAGCCCCCGCCCTTGATGTGGACTGGCA
GAACAACATGACCTTTGCCTCCTGTAGCACAGACATGTGTATCCATGTGTGCAGGCTCGGCTGTGACCAC
CCAGTCAAAAACCTCCAGGGACACAAAACGAGGTCAATGCCATCAAATGGGATCCTTCTGGAATGTTGC
TGCGCTCCTGCTCGGATGACATGACATTGAAGATCTGGAGTATGAAGCAGGATGCATGCCATGATGTC
TCAGGCTCACAGCAAAGAGATCTACACCATCAAGTGGAGCCCCACCGGGCCTGCCACCAGCAACCCAAAC
TCCAGCATCATGTTGGCAAGTGCTTCATTTGATTCTACAGTGCAGTGTGGGATGTGGAGCAAGGTGCT
GCACCCACACACTCATGAAGCATCAAGAGCCTGTCTACAGTGTAGCTTTAGCCCCGATGGAAGTACTT
GGCTAGTGGATCCTTTGACAAGTATGTTTATCTGGAATACTCAGAGTGGAAAGTCTCGTCCACAGCTAC
CAAGGCACTGGCGGTATCTTCGAGGTGTGCTGGAACGCCCGAGGAGATAAAGTGGGCGCCAGCGCTCTG
ATGGCTCTGTGTGTTCTGGATCTG

ACGCGTACGCGGCCGCTCGAGCAGAACTCATCTCAGAAGAGGATCTGGCAGCAAATGATATCCTGGATT
ACAAGGATGACGACGATAAGGTTTAA

Protein Sequence:

>RC212240 protein sequence
Red=Cloning site Green=Tags(s)

MSITSDEVNFLVYRYLQESGFSHAFTFGIESHISQSNINGTLVPPSALISILQKGLQYVEAEISINKDG
TVFDSRPIESLSLIVAVIPDVVQMRQQAFGEKLTQQQASAAATEASAMAKAATMPAAISQNPKNREA
TVNGEENGAHEINNHSKPMEDGDVEIPPNKATVLRGHESEVFCAWNVPVDLLASGSGDSTARIWNLNE
NSNGGSTQLVLRHCIREGGHDVPSNKDVTSLDWNDSGTLAMGSYDGFARIWTENGLASTLQHKGPFI
ALKWNNKGNVLSAGVDKTTIIWDAHTGEAKQQFPFHSAPALDWDQNNMTFASCSTDMCIHVCRLGCDH
PVKTFQGHTNEVNAIKWDPSGMLLASCSDDMTLKIWSMKQDACVHDLQAHSKEIYTIKWSPTGPATSNPN
SSIMLASASFDSTVRLWDVEQGVCTHTLMKHQEPVYSVAFSPDGKYLASGSFDKYVHIWNTQSGSLVHSY
QGTGGIFEVWCWNARGDKVGASASDGSVCVLDL

TRTRPLEQKLISEEDLAANDILDYKDDDDKV

Chromatograms:

https://cdn.origene.com/chromatograms/mk6606_d08.zip

Restriction Sites:

Sgfl-Mlul

Cloning Scheme:


ACCN: NM_134259

ORF Size: 1566 bp

OTI Disclaimer: Due to the inherent nature of this plasmid, standard methods to replicate additional amounts of DNA in E. coli are highly likely to result in mutations and/or rearrangements. Therefore, OriGene does not guarantee the capability to replicate this plasmid DNA. Additional amounts of DNA can be purchased from OriGene with batch-specific, full-sequence verification at a reduced cost. Please contact our customer care team at custsupport@origene.com or by calling 301.340.3188 option 3 for pricing and delivery.

The molecular sequence of this clone aligns with the gene accession number as a point of reference only. However, individual transcript sequences of the same gene can differ through naturally occurring variations (e.g. polymorphisms), each with its own valid existence. This clone is substantially in agreement with the reference, but a complete review of all prevailing variants is recommended prior to use. [More info](#)

OTI Annotation: This clone was engineered to express the complete ORF with an expression tag. Expression varies depending on the nature of the gene.

Components: The ORF clone is ion-exchange column purified and shipped in a 2D barcoded Matrix tube containing 10ug of transfection-ready, dried plasmid DNA (reconstitute with 100 ul of water).

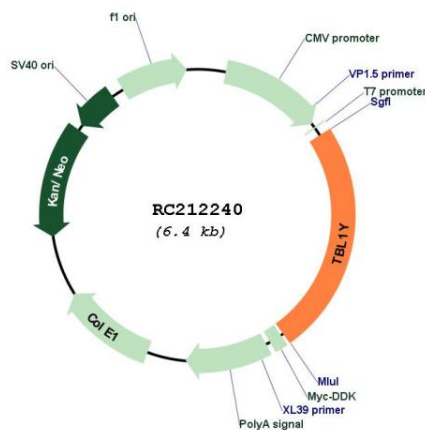
- Reconstitution Method:**
1. Centrifuge at 5,000xg for 5min.
 2. Carefully open the tube and add 100ul of sterile water to dissolve the DNA.
 3. Close the tube and incubate for 10 minutes at room temperature.
 4. Briefly vortex the tube and then do a quick spin (less than 5000xg) to concentrate the liquid at the bottom.
 5. Store the suspended plasmid at -20°C. The DNA is stable for at least one year from date of shipping when stored at -20°C.

RefSeq: [NM_134259.1](#), [NP_599021.1](#)

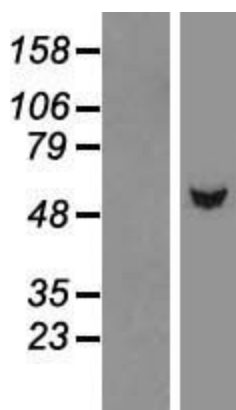
RefSeq Size: 2312 bp
RefSeq ORF: 1569 bp
Locus ID: 90665
UniProt ID: [Q9BQ87](#)
Cytogenetics: Yp11.2
Domains: WD40, LisH
Protein Families: Transcription Factors
Protein Pathways: Wnt signaling pathway
MW: 56.7 kDa

Gene Summary: The protein encoded by this gene has sequence similarity with members of the WD40 repeat-containing protein family. The WD40 group is a large family of proteins, which appear to have a regulatory function. It is believed that the WD40 repeats mediate protein-protein interactions and members of the family are involved in signal transduction, RNA processing, gene regulation, vesicular trafficking, cytoskeletal assembly and may play a role in the control of cytotypic differentiation. This gene is highly similar to TBL1X gene in nucleotide sequence and protein sequence, but the TBL1X gene is located on chromosome X and this gene is on chromosome Y. This gene has three alternatively spliced transcript variants encoding the same protein. [provided by RefSeq, Jul 2008]

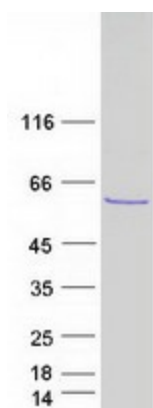
Product images:



Circular map for RC212240



Western blot validation of overexpression lysate (Cat# [LY409606]) using anti-DDK antibody (Cat# [TA50011-100]). Left: Cell lysates from untransfected HEK293T cells; Right: Cell lysates from HEK293T cells transfected with [RC220139] using transfection reagent MegaTran 2.0 (Cat# [TT210002]).



Coomassie blue staining of purified TBL1Y protein (Cat# [TP312240]). The protein was produced from HEK293T cells transfected with TBL1Y cDNA clone (Cat# RC212240) using MegaTran 2.0 (Cat# [TT210002]).