

Product datasheet for **RC212239**

ROR gamma (RORC) (NM_001001523) Human Tagged ORF Clone

Product data:

Product Type:	Expression Plasmids
Product Name:	ROR gamma (RORC) (NM_001001523) Human Tagged ORF Clone
Tag:	Myc-DDK
Symbol:	ROR gamma
Synonyms:	IMD42; NR1F3; RORG; RZR-GAMMA; RZRG; TOR
Mammalian Cell Selection:	Neomycin
Vector:	pCMV6-Entry (PS100001)
E. coli Selection:	Kanamycin (25 ug/mL)



[View online »](#)

ORF Nucleotide Sequence:

>RC212239 representing NM_001001523
 Red=Cloning site Blue=ORF Green=Tags(s)

TTTTGTAATACGACTCACTATAGGGCGGCCGGAATTCGTCGACTGGATCCGGTACCGAGGAGATCTGCC
 GCC**CGGATCGCC**

ATGAGAACACAAATTGAAGTGATCCCTTGCAAATCTGTGGGACAAGTCGTCTGGGATCCACTACGGG
 TTATCACCTGTGAGGGGTGCAAGGGCTTCCCGCCGGAGCCAGCGCTGTAAACGGCCTACTCCTGCAC
 CCGTCAGCAGAACTGCCCATCGACCGCACCAGCCGAAACCGATGCCAGCACTGCCGCTGCAGAAATGC
 CTGGCGCTGGGCATGTCCCGAGATGCTGTCAAGTTCGGCCGATGTCCAAGAAGCAGAGGGACAGCCTGC
 ATGCAGAAAGTGCAGAAACAGCTGCAGCAGCGGCAACAGCAGCAACAGGAACCAAGTGGTCAAGACCCCTC
 AGCAGGGGCCAAGGAGCAGATACCCTCACCTACACCTTGGGGCTCCAGACGGGACGCTGCCCTGGGC
 TCCTCGCCTGACCTGCCTGAGGCTTCTGCCTGTCCCTGGCCTCCTGAAAGCCTCAGGCTCTGGCCCT
 CATATTCCAACAATTGGCCAAGCAGGGCTCAATGGGGCTCATGCCACCTTGAATACAGCCCTGAGCG
 GGGCAAGGCTGAGGGCAGAGAGCTTCTATAGCACAGGCAGCCAGCTGACCCCTGACCGATGTGGACTT
 CGTTTTGAGGAACACAGGCATCCTGGGCTTGGGAACTGGGACAGGGCCAGACAGCTACGGCAGCCCA
 GTTCCCGCAGCACACCGGAGGCACCTATGCCTCCCTGACAGAGATAGAGCACCTGGTGCAGAGCGTCTG
 CAAGTCTACAGGGAGACATGCCAGCTGCGGCTGGAGGACCTGTGCGGCAGCGCTCCAACATCTTCTCC
 CGGGAGGAAGTACTGGCTACCAGAGGAAGTCCATGTGGGAGATGTGGAAACGGTGTGCCACCACCTCA
 CCGAGGCCATTCACTACGTGGTGGAGTTCGCCAAGAGGCTCTCAGGCTTTATGGAGCTCTGCCAGAAATGA
 CCAGATTGTGCTTCTCAAAGCAGGAGCAATGGAAGTGGTGTGGTTAGGATGTCCGGGCTACAATGCT
 GACAACCGCACGGTCTTTTTGAAGGCAATACGGTGGCATGGAGCTGTTCCGAGCCTTGGGCTGCAGCG
 AGCTCATCAGTCCATCTTTGACTTCTCCCACTCCCTAAGTGCCTTTCCGAGGATGAGATTGC
 CCTCTACACAGCCCTTGTCTCATCAATGCCATCGGCCAGGGCTCCAAGAGAAAAGGAAAGTAGAACAG
 CTGCAGTACAATCTGGAGCTGGCCTTTCATCATCTCTGCAAGACTCATCGCCAAAGCATCCTGGCAA
 AGCTGCCACCCAAGGGGAAGCTTCGGAGCCTGTGTAGCCAGCATGTGAAAGGCTGCAGATCTCCAGCA
 CCTCCACCCCATCGTGGTCCAAGCCGCTTCCCTCCACTCTACAAGGAGCTTTCAGCACTGAAACCGAG
 TCACCTGTGGGGCTGTCCAAG

**ACGGTACGGCGCCGCTCGAGCAGAAACTCATCTCAGAAGAGGATCTGGCAGCAAATGATATCCTGGATT
 ACAAGGATGACGACGATAAGGTTTAA**

Protein Sequence:

>RC212239 representing NM_001001523
 Red=Cloning site Green=Tags(s)

MRTQIEVIPCKICGDKSSGIHYGVITCEGCKGFFRRSQRCAAYSCTRQQNCPIDRTSRNRCQHCRLOK
 LALGMSRDAVKFGRMSKKQRDSLHAEVQKQLQRRQQQQEPVVKTPPAGAQQADTLTYTLGLPDGQLPLG
 SSPDLPEASACPPGLLKASGSGPSYSNNLAKAGLNGASCHLEYSPEKGAEGRESFYSTGSQTPDRCGL
 RFEHRHPGLGELGQGPDSYSPSFRSTPEAPYASLIEHLVQSVCKSYRETCQLRLEDLLRQSNIFS
 REEVTGYQRKSMWEMWERCAHHLTEAIQYVVEFAKRLSGFMELCQNDQIVLLKAGAMEVVLVRCRAYNA
 DNRTVFFEGKYGMELFRALGCSELISSIFDFSHLSALHFSEDEIALYALVLIINAHRPGLQEKRVKVEQ
 LQYNLELAFHHHLCKTHRQSILAKLPPKGLRSLCSQHVERLQIFQHLHPIVVQAAPPPLYKELFSTETE
 SPVGLSK

TRTRPLEQKLISEEDLAANDILDYKDDDDKV

Chromatograms:

https://cdn.origene.com/chromatograms/mk6249_d06.zip

Restriction Sites:

SgfI-MluI

Cloning Scheme:

ACCN: NM_001001523

ORF Size: 1491 bp

OTI Disclaimer: Due to the inherent nature of this plasmid, standard methods to replicate additional amounts of DNA in E. coli are highly likely to result in mutations and/or rearrangements. Therefore, OriGene does not guarantee the capability to replicate this plasmid DNA. Additional amounts of DNA can be purchased from OriGene with batch-specific, full-sequence verification at a reduced cost. Please contact our customer care team at custsupport@origene.com or by calling 301.340.3188 option 3 for pricing and delivery.

The molecular sequence of this clone aligns with the gene accession number as a point of reference only. However, individual transcript sequences of the same gene can differ through naturally occurring variations (e.g. polymorphisms), each with its own valid existence. This clone is substantially in agreement with the reference, but a complete review of all prevailing variants is recommended prior to use. [More info](#)

OTI Annotation: This clone was engineered to express the complete ORF with an expression tag. Expression varies depending on the nature of the gene.

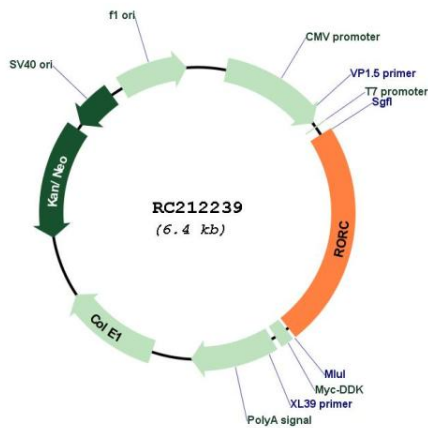
Components: The ORF clone is ion-exchange column purified and shipped in a 2D barcoded Matrix tube containing 10ug of transfection-ready, dried plasmid DNA (reconstitute with 100 ul of water).

- Reconstitution Method:**
1. Centrifuge at 5,000xg for 5min.
 2. Carefully open the tube and add 100ul of sterile water to dissolve the DNA.
 3. Close the tube and incubate for 10 minutes at room temperature.
 4. Briefly vortex the tube and then do a quick spin (less than 5000xg) to concentrate the liquid at the bottom.
 5. Store the suspended plasmid at -20°C. The DNA is stable for at least one year from date of shipping when stored at -20°C.

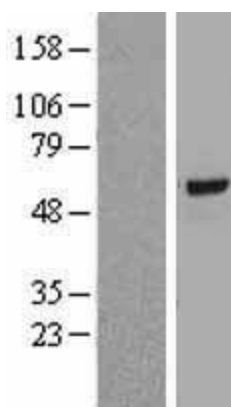
RefSeq: [NM_001001523.2](#)
RefSeq Size: 3054 bp
RefSeq ORF: 1494 bp
Locus ID: 6097
UniProt ID: [P51449](#)
Cytogenetics: 1q21.3
Protein Families: Druggable Genome, Transcription Factors
MW: 55.6 kDa

Gene Summary: The protein encoded by this gene is a DNA-binding transcription factor and is a member of the NR1 subfamily of nuclear hormone receptors. The specific functions of this protein are not known; however, studies of a similar gene in mice have shown that this gene may be essential for lymphoid organogenesis and may play an important regulatory role in thymopoiesis. In addition, studies in mice suggest that the protein encoded by this gene may inhibit the expression of Fas ligand and IL2. Two transcript variants encoding different isoforms have been found for this gene. [provided by RefSeq, Jul 2008]

Product images:



Circular map for RC212239



Western blot validation of overexpression lysate (Cat# [LY424370]) using anti-DDK antibody (Cat# [TA50011-100]). Left: Cell lysates from untransfected HEK293T cells; Right: Cell lysates from HEK293T cells transfected with RC212239 using transfection reagent MegaTran 2.0 (Cat# [TT210002]).