

Product datasheet for **RC212236**

BTNL3 (NM_197975) Human Tagged ORF Clone

Product data:

Product Type:	Expression Plasmids
Product Name:	BTNL3 (NM_197975) Human Tagged ORF Clone
Tag:	Myc-DDK
Symbol:	BTNL3
Synonyms:	BTN9.1; BTNLR
Mammalian Cell Selection:	Neomycin
Vector:	pCMV6-Entry (PS100001)
E. coli Selection:	Kanamycin (25 ug/mL)



[View online »](#)

ORF Nucleotide Sequence:

>RC212236 ORF sequence
 Red=Cloning site Blue=ORF Green=Tags(s)

TTTTGTAATACGACTCACTATAGGGCGGCCGGGAATTCGTCGACTGGATCCGGTACCGAGGAGATCTGCC
 GCC**CGGATCGCC**

ATGGCTTTTGTGCTCATTGTTGTTCTCAGTTTCTACGAGCTGGTGTGTCAGGACAGTGGCAAGTCACTGGAC
 CGGGCAAGTTTGTCCAGGCCTTGGTGGGGAGGACGCGCTGTTCTCTGCTCCCTTTTCTGAGACCAG
 TGCAGAGGCTATGGAAGTGCAGTCTTTCAGGAATCAGTCCATGCTGTGGTCCACCTCTACAGAGATGGG
 GAAGACTGGGAATCTAAGCAGATGCCACAGTATCGAGGGAGAAGTGAAGTGTGGAAGACTCCATTGCAG
 GGGGGCGTGTCTCTAAGGCTAAAAACATCACTCCCTCGGACATCGGCCTGTATGGGTGCTGGTTCAG
 TTCCAGATTTACGATGAGGAGGCCACCTGGGAGCTGCGGGTGGCAGCACTGGGCTCACTTCTCTCATT
 TCCATCGTGGGATATGTTGACGGAGGTATCCAGTACTCTGCCTGCTCCTCAGGCTGGTCCCCAGCCCA
 CAGCCAAGTGGAAAGTCCACAAGGACAGGATTTGTCTCAGACTCCAGAGCAAATGCAGATGGGTACAG
 CCTGTATGATGTGGAGATCTCCATTATAGTCCAGGAAAATGCTGGGAGCATATTGTGTTCCATCCACCTT
 GCTGAGCAGAGTCATGAGGTGGAATCCAAGGATTTGATAGGAGAGACGTTTTTCCAGCCCTCACCTTGGC
 GCCTGGCTTCTATTTTACTCGGGTACTCTGTGGTGCCTGTGTGGTGTGTCATGGGGATGATAATTGT
 TTTCTTCAAATCCAAAGGGAAAATCCAGGCGGAACTGGACTGGAGAAGAAAGCACGGACAGGCAGAAATTG
 AGAGACGCCCCGAAACACGCAGTGGAGGTGACTCTGGATCCAGAGACGGCTCACCCGAAGCTCTGCGTTT
 CTGATCTGAAAAGTGAACCCATAGAAAAGCTCCTCAGGAGGTGCCTCACTCTGAGAAGAGATTTACAAG
 GAAGAGTGTGGTGGCTTCTCAGGGTTTCCAAGCAGGAAAACATTACTGGGAGGTGGACGTGGGACAAAAT
 GTAGGGTGGTATGTGGGAGTGTGTCGGGATGACGTAGACAGGGGGAAGAACAATGTGACTTTGTCTCCCA
 ACAATGGGTATTGGTCTCAGACTGACAACAGAATTTGTATTTACATTCAATCCCCATTTTATCAG
 CCTCCCCCAGCACCCCTCTACACGAGTAGGGGTCTTCTGGACTATGAGGGTGGGACCATCTCCTTC
 TTCAATACAAATGATCAGTCCCTTATTTATACCCTGCTGACATGTCAGTTTGAAGCTTGTGAGACCTT
 ATATCCAGCATGCGATGTATGACGAGGAAAAGGGGACTCCCATATTCATATGTCCAGTGTCTGGGGA

ACGCGTACGCGGCCGCTCGAGCAGAAACTCATCTCAGAAGAGGATCTGGCAGCAAATGATATCCTGGATT
 ACAAGGATGACGACGATAAGGTTTAA

Protein Sequence:

>RC212236 protein sequence
 Red=Cloning site Green=Tags(s)

MAFVLILVLSFYELVSGQWQVTGPGKFVQALVGEDAVFSCSLFPETSAEAMEVFRFRNQFHAVVHLYRDG
 EDWESKQMPQYRGRTEFVKDSIAGGRVSLRLKNI TPSDIGLYGCWFSSQIYDEEATWELRVAALGSLPLI
 SIVGYVDGGIQLLCLSSGWFPQPTAKWKGPQGQDLSSDSRANADGYSLYDVEISIIIVQENAGSILCSIHL
 AEQSHEVESKVLIGETFFQPSWRLASILLGLLCGALCGVVMGMIIVFFKSKGKIQAELDWRKHHGQAE
 RDARKHAVEVTLPETAHPKLCVSDLKTVTHRKAPQEVPHSEKRFTRKSVVASQGFQAGKHYWEVDVGQN
 VGWYVGVCRDDVDRGKNNVTLSPNNGYVWLRLTTEHLYFTFNPHFISLPPSTPPTRVGVFLDYEGGTISF
 FNTNDQSLIYTLTLCQFEGLLRPYIQHAMYDEEKGTPIFICPVSWG

TRTRPLEQKLISEEDLAANDILDYKDDDDKV

Chromatograms:

https://cdn.origene.com/chromatograms/mk6449_h11.zip

Restriction Sites:

Sgfl-Mlul

Cloning Scheme:


ACCN: NM_197975

ORF Size: 1398 bp

OTI Disclaimer: The molecular sequence of this clone aligns with the gene accession number as a point of reference only. However, individual transcript sequences of the same gene can differ through naturally occurring variations (e.g. polymorphisms), each with its own valid existence. This clone is substantially in agreement with the reference, but a complete review of all prevailing variants is recommended prior to use. [More info](#)

OTI Annotation: This clone was engineered to express the complete ORF with an expression tag. Expression varies depending on the nature of the gene.

Components: The ORF clone is ion-exchange column purified and shipped in a 2D barcoded Matrix tube containing 10ug of transfection-ready, dried plasmid DNA (reconstitute with 100 ul of water).

Reconstitution Method:

1. Centrifuge at 5,000xg for 5min.
2. Carefully open the tube and add 100ul of sterile water to dissolve the DNA.
3. Close the tube and incubate for 10 minutes at room temperature.
4. Briefly vortex the tube and then do a quick spin (less than 5000xg) to concentrate the liquid at the bottom.
5. Store the suspended plasmid at -20°C. The DNA is stable for at least one year from date of shipping when stored at -20°C.

RefSeq: [NM_197975.3](#)

RefSeq Size: 2454 bp

RefSeq ORF: 1401 bp

Locus ID: 10917

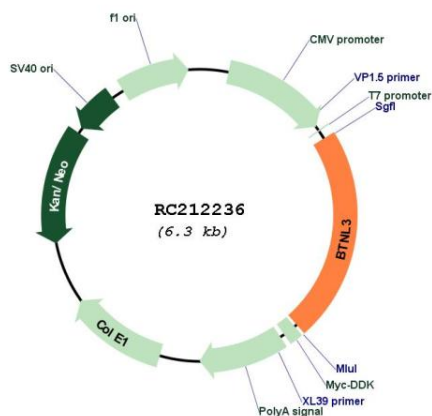
UniProt ID: [Q6UXE8](#)

Cytogenetics: 5q35.3

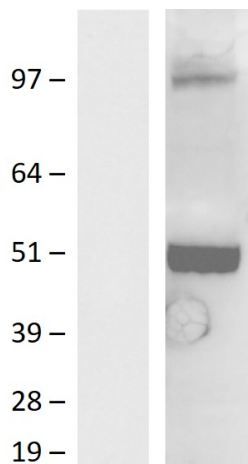
Protein Families: Druggable Genome, Transmembrane

MW: 52.3 kDa

Product images:



Circular map for RC212236



Western blot validation of overexpression lysate (Cat# [LY405097]) using anti-DDK antibody (Cat# [TA592569]). Left: Cell lysates from untransfected HEK293T cells; Right: Cell lysates from HEK293T cells transfected with RC212236 using transfection reagent PEI.