

## Product datasheet for **RC212231**

### SMARCA6 (HELLS) (NM\_018063) Human Tagged ORF Clone

#### Product data:

Product Type:	Expression Plasmids
Product Name:	SMARCA6 (HELLS) (NM_018063) Human Tagged ORF Clone
Tag:	Myc-DDK
Symbol:	SMARCA6
Synonyms:	ICF4; LSH; Nbla10143; PASG; SMARCA6
Mammalian Cell Selection:	Neomycin
Vector:	pCMV6-Entry (PS100001)
E. coli Selection:	Kanamycin (25 ug/mL)



[View online »](#)

ORF Nucleotide  
Sequence:

>RC212231 representing NM\_018063  
Red=Cloning site Blue=ORF Green=Tags(s)

TTTTGTAATACGACTCACTATAGGGCGGCCGGGAATTCGTCGACTGGATCCGGTACCGAGGAGATCTGCC  
GCCGCGATCGCC

ATGCCAGCGGAACGGCCCGGGCAGCGCGGCTCGGAGGCTCCAGCAATGGTTGAACAACCTGGACACTG  
CTGTGATTACCCCGCCATGCTAGAAGAGGAAGAACAGCTTGAAGCTGCTGGACTAGAGAGAGAGCGGAA  
GATGCTGGAAAAGGCTCGCATGTCTTGGGATAGAGAGTCGACAGAAATTCGGTACCGTAGACTTCAACAT  
TTGCTTGAaaaaAGCAATATCTACTCCAAATTTTTATTGACGAAAATGGAACAGCAACAATTAGAGGAAC  
AGAAGAAGAAAAGAAAATTTGGAGAGAAAAAGGAGTCTTTAAAAGTTAAAAAGGGTAAAAATTC AATTGA  
TGCAAGTGAAGAGAAGCCAGTTATGAGGAAAAAAGAGGAAGAGAAGATGAATCATACAATATTTTCAGAG  
GTCATGTCAAAGAGGAAATTTGTCTGTGGCTAAAAAATAAAAAGGAGAATGAGGATGAAAACCTCT  
CCTCTACTAATCTCTGTGTGGAAGATCTTCAGAAAAATAAAGATTCGAATAGTATAATTAAGATAGATT  
GTCTGAAACGGTTAGGCAGAATACTAAATCTTTTTTGACCCAGTCCGGAAGTGAATGGTCAGCCAGTA  
CCTTTTCAACAACCAAAGCACTTCACTGGAGGAGTGATGCGATGGTACCAAGTAGAAGGCATGGAATGGC  
TTAGGATGCTTTGGGAAAATGGAATTAATGGCATTITAGCAGATGAAATGGGATTGGGTAAGACAGTTCA  
GTGCATTGCTACTATTGCATTGATGATTCAGAGAGGAGTACCAGGACCTTTTCTGTCTGTGGCCCTTTG  
TCTACACTTCTAACTGGATGGCTGAATTCAAAAGATTTACACCAGATATCCCTACAATGTTATATCATG  
GAACCCAGGAGGAACGTCAAAAATTTGGTAAAGAAATATTTACAACGGAAGGGACTTTGCAGATTCATCC  
TGTGGTAAACACGTCATTTGAAATAGCCATGAGAGACCGAAATGCGTTACAGCATTGCTATTGGAATAC  
TTAATAGTAGATGAAGGACACAGGATTAAGAATATGAAGTGCCGTCTAATCAGGGAGTTAAAACGATTCA  
ATGCTGATAACAACTTCTTTTGACTGGTACTCCCTTGCAAACAATTTATCAGAACTTTGGTCATTGCT  
AAACTTTTTGTTGCCAGATGATTTGATGACTTGAAAAGCTTTGAGTCTTGGTTTGACATCACTAGTCTT  
TCTGAAACTGCTGAAGATATTATTGCTAAAGAAAGAGAACAAGATGATTGCATATGCTGCACCAGATTT  
TAACACCTTTCTATTGAGAAGACTGAAGTCTGATGTTGCTCTTGAAGTCTCTCAAACGAGAAGTAGT  
CGTTTTATGCTCCACTTTCAAAGAAGCAGGAGATCTTTTATACAGCCATTGTGAACCGTACAATTGCAAAAC  
ATGTTTGGATCCAGTGAGAAAGAAACAATTGAGTTAAGTCTACTGGTCGACCAAACGACGAACTAGAA  
AATCAATAAATTACAGCAAAATAGATGATTTCCCTAATGAATTGGAAAACTGATCAGTCAAATACAGCC  
AGAGGTGGACCGAGAAAGAGCTGTTGTGGAAGTGAATATCCCTGTAGAATCTGAAGTTAATCTGAAGCTG  
CAGAATATAATGATGCTACTTCGTAATGTTGTAATCATCCATATTTGATTGAATATCCTATAGACCCTG  
TTACACAAGAATTAAGATCGATGAAGAATTGGTAACAAATCTGGGAAGTCTTGATTTTGGATCGAAT  
GCTGCCAGAACTAAAAAAGAGGTCAAGGTGCTGCTTTTTTCACAAATGACAAGCATGTTGGACATT  
TTGATGGATTACTGCCATCTCAGAGATTTCAACTTCAGCAGGCTTGATGGGTCCATGCTTACTCAGAGA  
GAGAAAAAACATGCACAGCTTCAACACGGATCCAGAGGTGTTTATCTTCTTAGTGAGTACACGAGCTGG  
TGGCCTGGGCATTAATCTGACTGCAGCAGATACAGTTATCATTTATGATAGTGATTGGAACCCCAAGTCG  
GATCTTCAGGCCAGGATAGATGTCATAGAATTGGTCAGACAAAGCCAGTTGTTGTTTATCGCCTTGTTA  
CAGCAAACTACTATCGATCAGAAAATTTGTGGAAGAGCAGCTGCTAAAAGGAACTGGAAAAGTTGATCAT  
CCATAAAAAATCAATTCAAAGGTGGTCAGTCTGGATTAATCTGTCTAAGAATTTCTTAGATCCTAAGGAA  
TTAATGGAATTATTAATCTAGAGATTATGAAAGGGAATAAAAAGGATCAAGAGAGAAGGTCATTAGTG  
ATAAAGATCTAGAGTTGTTGTTAGATCGAAGTGTCTTATTGATCAAATGAATGCTTCAGACCAATTA  
AGAGAAGATGGGATATTCAAGATATTAGAAAATCTGAAGATTCAGTCTGAATGTTTGT

ACGCGTACGCGGCCGCTCGAGCAGAACTCATCTCAGAAGAGGATCTGGCAGCAAATGATATCCTGGATT  
ACAAGGATGACGACGATAAGGTTTAA

Protein Sequence: >RC212231 representing NM\_018063  
Red=Cloning site Green=Tags(s)

MPAERPAGSGGSEAPAMVEQLDTAVITPAMLEEEEQLEAAGLERERKMLEKARMSWDRESTEIRYRRLQH  
LLEKSNIYSKFLTKMEQQLEEQKKKEKLERKKEKSLKVKKGKNSIDASEEKPMRKKRGREDESYNISE  
VMSKEEILSVAKKNKKENEDENSSSTNLCVEDLQKNKDSNSIIKDRLSETVRQNTKFFFDPPVRKCNQGPV  
PFQPKHFTGGVMRWYQVEGMEWLRMLWENGINLADEMGLGKTVQCIATIALMIQRGVPFPFLVCGPL  
STLPNWMAEFKRFPTDIPMTLYHGTQEERQKLVNRNIYKRKGTLQIHPVVITSFEIAMRDRNALQHCYWKY  
LIVDEGHRKKNMKCRLIRELKRFNADNKLLLGTPLQNNLSELWSLLNFLLPDVFDDLKSFESWFDITSL  
SETAEDIIAKEREQNVLHMLHQILTPFLLRRLKSDVALEVPPKREVVVYAPLSKKQEIFYTAIVNRTIAN  
MFGSSEKETIELSPTGRPKRTRKSINYSKIDDFPNELEKLISQIQPEVDRERAVVEVNIPVESEVNLKL  
QNIMMLLRKCCNHPYLIEYPIDPVTQEFKIDEELVTNSGKFLILDRMLPELKKRGHKVLLFSQMTSMLDI  
LMDYCHLRDFNFSRLDGSMSYSEREKNMHSFNTDPEVFI FLVSTRAGGLGINLTAADTVIIYDSWNPQS  
DLQAQDRCHRIGQTKPVVVYRLVTANTIDQKIVERAAAARKLEKLIHKNHFKGGQSGLNLSKNFLDPKE  
LMELLKSRDYEREIKGSREKVISDKDELELLDRSDLIDQMNASGPIKEKMGIFKILENSEDSSPECLF

TRTRPLEQKLISEEDLAANDILDYKDDDDKV

Chromatograms: [https://cdn.origene.com/chromatograms/mk6204\\_a03.zip](https://cdn.origene.com/chromatograms/mk6204_a03.zip)

Restriction Sites: Sgfl-Mlul

**Cloning Scheme:**


**ACCN:** NM\_018063

**ORF Size:** 2514 bp

**OTI Disclaimer:** The molecular sequence of this clone aligns with the gene accession number as a point of reference only. However, individual transcript sequences of the same gene can differ through naturally occurring variations (e.g. polymorphisms), each with its own valid existence. This clone is substantially in agreement with the reference, but a complete review of all prevailing variants is recommended prior to use. [More info](#)

**OTI Annotation:** This clone was engineered to express the complete ORF with an expression tag. Expression varies depending on the nature of the gene.

**Components:** The ORF clone is ion-exchange column purified and shipped in a 2D barcoded Matrix tube containing 10ug of transfection-ready, dried plasmid DNA (reconstitute with 100 ul of water).

**Reconstitution Method:**

1. Centrifuge at 5,000xg for 5min.
2. Carefully open the tube and add 100ul of sterile water to dissolve the DNA.
3. Close the tube and incubate for 10 minutes at room temperature.
4. Briefly vortex the tube and then do a quick spin (less than 5000xg) to concentrate the liquid at the bottom.
5. Store the suspended plasmid at -20°C. The DNA is stable for at least one year from date of shipping when stored at -20°C.

**RefSeq:** [NM\\_018063.2](#)

**RefSeq Size:** 3165 bp

**RefSeq ORF:** 2517 bp

**Locus ID:** 3070

**UniProt ID:** [Q9NRZ9](#)

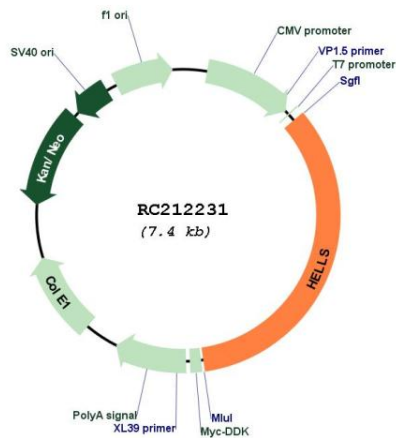
**Cytogenetics:** 10q23.33

**Domains:** SNF2\_N, DEAD, helicase\_C

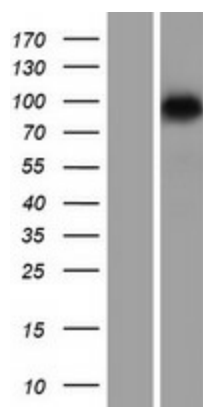
**MW:** 96.9 kDa

**Gene Summary:** This gene encodes a lymphoid-specific helicase. Other helicases function in processes involving DNA strand separation, including replication, repair, recombination, and transcription. This protein is thought to be involved with cellular proliferation and may play a role in leukemogenesis. Alternatively spliced transcript variants encoding different isoforms have been identified. [provided by RefSeq, Jan 2014]

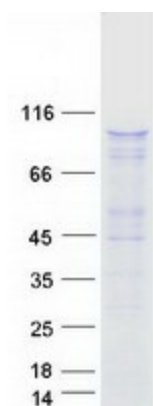
### Product images:



Circular map for RC212231



Western blot validation of overexpression lysate (Cat# [LY402643]) using anti-DDK antibody (Cat# [TA50011-100]). Left: Cell lysates from untransfected HEK293T cells; Right: Cell lysates from HEK293T cells transfected with RC212231 using transfection reagent MegaTran 2.0 (Cat# [TT210002]).



Coomassie blue staining of purified HELLs protein (Cat# [TP312231]). The protein was produced from HEK293T cells transfected with HELLs cDNA clone (Cat# RC212231) using MegaTran 2.0 (Cat# [TT210002]).