

Product datasheet for **RC212230**

WBP5 (TCEAL9) (NM_001006614) Human Tagged ORF Clone

Product data:

Product Type:	Expression Plasmids
Product Name:	WBP5 (TCEAL9) (NM_001006614) Human Tagged ORF Clone
Tag:	Myc-DDK
Symbol:	WBP5
Synonyms:	WBP5; WEX6
Mammalian Cell Selection:	Neomycin
Vector:	pCMV6-Entry (PS100001)
E. coli Selection:	Kanamycin (25 ug/mL)
ORF Nucleotide Sequence:	>RC212230 ORF sequence Red=Cloning site Blue=ORF Green=Tags(s)

TTTTGTAATACGACTCACTATAGGGCGGCCGGAATTCGTCGACTGGATCCGGTACCGAGGAGATCTGCC
GCC**CGATCGCC**

ATGAAATCCTGTCAAAAAATGGAAGGAAAACCAGAAAATGAGAGTGAACCAAAGCATGAGGAAGGCCAA
AGCCTGAGGAAAAGCCAGAAGAGGAGGAGAAGCTAGAGGAGGAGGCCAAAGCAAAGGAACCTTTAGAGA
AAGGCTGATTCATCTCTCCAGGAGTTTAAAGAAGATATACACAACAGGCATTTAAGCAATGAAGATATG
TTTAGAGAAGTGGATGAAATAGATGAGATAAGGAGAGTCAGAAACAACTTATAGTGATGCGTTGGAAGG
TTAATCGAAACCATCCTTACCCATTTAATG

ACGCGTACGCGGCCGCTCGAGCAGAAACTCATCTCAGAAGAGGATCTGGCAGCAAATGATATCCTGGATT
ACAAGGATGACGACGATAAGGTTTAA

Protein Sequence:	>RC212230 protein sequence Red=Cloning site Green=Tags(s)
	MKSCQKMEGKPENESEPKHEEEPKPEEKPEEEEEKLEEEAKAKGTFRERLIQSLQEFKEDIHNRHLSNEDM FREVDEIDEIRRVRNKLIYMRWKVNRNHPYPYLM

TRTRPLEQKLISEEDLAANDILDYKDDDDKV

Chromatograms: https://cdn.origene.com/chromatograms/mk6429_b06.zip

Restriction Sites: SgfI-MluI



[View online »](#)

Cloning Scheme:


ACCN: NM_001006614

ORF Size: 312 bp

OTI Disclaimer: The molecular sequence of this clone aligns with the gene accession number as a point of reference only. However, individual transcript sequences of the same gene can differ through naturally occurring variations (e.g. polymorphisms), each with its own valid existence. This clone is substantially in agreement with the reference, but a complete review of all prevailing variants is recommended prior to use. [More info](#)

OTI Annotation: This clone was engineered to express the complete ORF with an expression tag. Expression varies depending on the nature of the gene.

Components: The ORF clone is ion-exchange column purified and shipped in a 2D barcoded Matrix tube containing 10ug of transfection-ready, dried plasmid DNA (reconstitute with 100 ul of water).

- Reconstitution Method:**
1. Centrifuge at 5,000xg for 5min.
 2. Carefully open the tube and add 100ul of sterile water to dissolve the DNA.
 3. Close the tube and incubate for 10 minutes at room temperature.
 4. Briefly vortex the tube and then do a quick spin (less than 5000xg) to concentrate the liquid at the bottom.
 5. Store the suspended plasmid at -20°C. The DNA is stable for at least one year from date of shipping when stored at -20°C.

RefSeq: [NM_001006614.2](#)

RefSeq Size: 1020 bp

RefSeq ORF: 315 bp

Locus ID: 51186

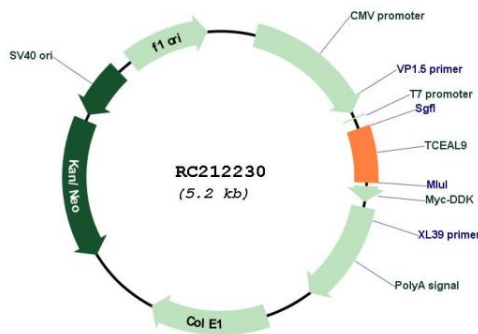
UniProt ID: [Q9UHQ7](#)

Cytogenetics: Xq22.2

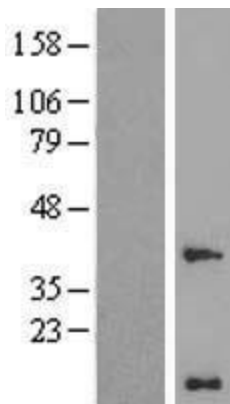
MW: 12.7 kDa

Gene Summary: The globular WW domain is composed of 38 to 40 semiconserved amino acids shared by proteins of diverse functions including structural, regulatory, and signaling proteins. The domain is involved in mediating protein-protein interactions through the binding of polyproline ligands. This gene encodes a WW domain binding protein. This gene also encodes a domain with similarity to the transcription elongation factor A, SII-related family. Alternative splicing results in multiple transcript variants encoding a single isoform. [provided by RefSeq, Jul 2008]

Product images:



Circular map for RC212230



Western blot validation of overexpression lysate (Cat# [LY423690]) using anti-DDK antibody (Cat# [TA50011-100]). Left: Cell lysates from untransfected HEK293T cells; Right: Cell lysates from HEK293T cells transfected with RC212230 using transfection reagent MegaTran 2.0 (Cat# [TT210002]).