

Product datasheet for RC212223

Decorin (DCN) (NM_133503) Human Tagged ORF Clone

Product data:

Product Type:	Expression Plasmids
Product Name:	Decorin (DCN) (NM_133503) Human Tagged ORF Clone
Tag:	Myc-DDK
Symbol:	Decorin
Synonyms:	CSCD; DSPG2; PG40; PGII; PGS2; SLRR1B
Mammalian Cell Selection:	Neomycin
Vector:	pCMV6-Entry (PS100001)
E. coli Selection:	Kanamycin (25 ug/mL)
ORF Nucleotide Sequence:	>RC212223 ORF sequence Red=Cloning site Blue=ORF Green=Tags(s)

TTTTGTAATACGACTCACTATAGGGCGCCGGGAATTCGTCGACTGGATCCGGTACCGAGGAGATCTGCC
GCC**CGATCGCC**

ATGAAGGCCACTATCATCCTCTCTGCTTGCACAAGTTTCTGGGCTGGACCGTTTCAACAGAGAGGCT
TATTTGACTTTATGCTAGAAGATGAGGCTTCTGGGATAGGCCCAGAAGTTCTGATGACCGCGACTTCGA
GCCCTCCCTAGGCCAGTGTGCCCTTCCGCTGTCAATGCCATCTTCGAGTGGTCCAGTGTCTGATTTG
GGTCTGGACAAAGTGCCAAAGGATCTTCCCCTGACACAACCTCTGCTAGACCTGCAAAACAACAAAATAA
CCGAAATCAAAGATGGAGACTTTAAGAACCTGAAGAACCTTCACGCATTGATTCTTGCAACAATAAAAT
TAGCAAAGTTAGTCTGGAGCATTACACCTTTGGTGAAGTTGGAACGACTTTATCTGTCCAAGAATCAG
CTGAAGGAATTGCCAGAAAAATGCCAAAACCTTTCAGGAGCTGCGTGCCCATGAGAATGAGATACCA
AAGTGCGAAAAGTTACTTTCAATGGACTGAACCAGATGATTGTCTAGAAGTGGGCACCAATCCGCTGAA
GAGCTCAGGAATTGAAAATGGGGCTTCCAGGGAATGAAGAAGCTCTCTACATCCGATTGCTGATACC
AATATCACCAGCATTCTCAAGTCTTCTCTTCCCTTACGGAATTACATCTTGATGGCAACAAAATCA
GCAGAGTTGATGCAGCTAGCCTGAAAGGACTGAATAATTTGGCTAAGTTGGGATTGAGTTTCAACAGCAT
CTCTGCTGTTGACAATGGCTCTCTGGCCAACACGCCTCATCTGAGGGAGCTTCACTTGGACAACAACAAG
CTTACCAGAGTACCTGGTGGGCTGGCAGAGCATAAGTACATCCAGTTGTCTACCTCATAACAACAATA
TCTCTGTAGTTGGATCAAGTGACTTCTGCCACCTGGACACAACACCAAAAAGGCTTCTTATTCCGGTGT
GAGTCTTTTCAGCAACCCGGTCCAGTACTGGGAGATACAGCCATCCACCTTCAGATGTGTCTACGTGCGC
TCTGCCATTCACTCGGAACTATAAG

ACGCGTACGCGGCCGCTCGAGCAGAAAACATCTCAGAAGAGGATCTGGCAGCAATGATATCCTGGATT
ACAAGGATGACGACGATAAGGTTAA



[View online »](#)

Reconstitution Method:

1. Centrifuge at 5,000xg for 5min.
2. Carefully open the tube and add 100ul of sterile water to dissolve the DNA.
3. Close the tube and incubate for 10 minutes at room temperature.
4. Briefly vortex the tube and then do a quick spin (less than 5000xg) to concentrate the liquid at the bottom.
5. Store the suspended plasmid at -20°C. The DNA is stable for at least one year from date of shipping when stored at -20°C.

RefSeq: [NM_133503.3](#)

RefSeq Size: 2151 bp

RefSeq ORF: 1080 bp

Locus ID: 1634

UniProt ID: [P07585](#)

Cytogenetics: 12q21.33

Domains: LRRNT, LRR, LRR_TYP, LRR_BAC, LRR_PS

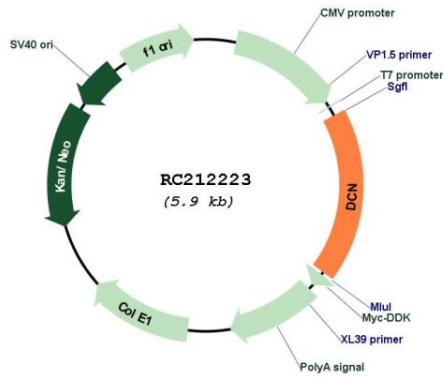
Protein Families: Druggable Genome, Secreted Protein

Protein Pathways: TGF-beta signaling pathway

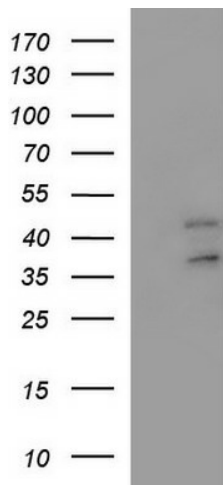
MW: 39.7 kDa

Gene Summary: This gene encodes a member of the small leucine-rich proteoglycan family of proteins. Alternative splicing results in multiple transcript variants, at least one of which encodes a preproprotein that is proteolytically processed to generate the mature protein. This protein plays a role in collagen fibril assembly. Binding of this protein to multiple cell surface receptors mediates its role in tumor suppression, including a stimulatory effect on autophagy and inflammation and an inhibitory effect on angiogenesis and tumorigenesis. This gene and the related gene biglycan are thought to be the result of a gene duplication. Mutations in this gene are associated with congenital stromal corneal dystrophy in human patients. [provided by RefSeq, Nov 2015]

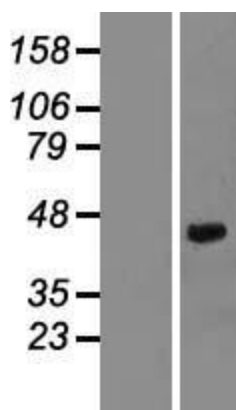
Product images:



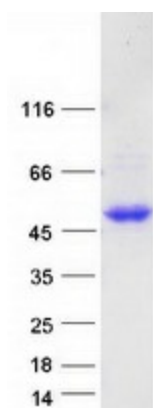
Circular map for RC212223



HEK293T cells were transfected with the pCMV6-ENTRY control (Cat# [PS100001], Left lane) or pCMV6-ENTRY DCN (Cat# RC212223, Right lane) cDNA for 48 hrs and lysed. Equivalent amounts of cell lysates (5 ug per lane) were separated by SDS-PAGE and immunoblotted with anti-DCN (Cat# [TA590297]). Positive lysates [LY403339] (100ug) and [LC403339] (20ug) can be purchased separately from OriGene.



Western blot validation of overexpression lysate (Cat# [LY403339]) using anti-DDK antibody (Cat# [TA50011-100]). Left: Cell lysates from untransfected HEK293T cells; Right: Cell lysates from HEK293T cells transfected with RC212223 using transfection reagent MegaTran 2.0 (Cat# [TT210002]).



Coomassie blue staining of purified DCN protein (Cat# [TP312223]). The protein was produced from HEK293T cells transfected with DCN cDNA clone (Cat# RC212223) using MegaTran 2.0 (Cat# [TT210002]).