

Product datasheet for RC212207

EXTL2 (NM_001033025) Human Tagged ORF Clone

Product data:

Product Type:	Expression Plasmids
Product Name:	EXTL2 (NM_001033025) Human Tagged ORF Clone
Tag:	Myc-DDK
Symbol:	EXTL2
Synonyms:	EXTR2
Mammalian Cell Selection:	Neomycin
Vector:	pCMV6-Entry (PS100001)
E. coli Selection:	Kanamycin (25 ug/mL)
ORF Nucleotide Sequence:	>RC212207 ORF sequence Red=Cloning site Blue=ORF Green=Tags(s)

TTTTGTAATACGACTCACTATAGGGCGGCCGGAATTCGTCGACTGGATCCGGTACCGAGGAGATCTGCC
GCC**CGATCGCC**

ATGAGGTGTTGCCACATCTGCAAACCTCCTGGGAGAGTAATGGGGATTTCGAGTGCCTTCGATTATCTTTGG
TGGTCATCCTCGTATTACTGGTAGCTGGTGCCTTGACTGCCTTACTCCCAGTGTTAAAGAAGACAA
GATGCTCATGTTGCGTAGGGAAATAAAATCCCAGGGCAAGTCCACCATGGACTCCTTTACTCTCATAATG
CAGACGTACAACAGAACAGATCTCTTATTGAAACTTTTAAATCATTATCAGGCTGTACCAAATCTGCACA
AAGTGATTGTGGTATGGAACAATATTGGAGAGAAGGCACCAGATGAATTATGGAATTCTCTAGGGCCCCA
CCCTATCCCTGTGATCTTCAAACAACAGACAGCAAACAGGATGAGAAATCGACTCCAGGTCTTTCCTGAA
CTGGAAACCAATGCAGTGTGGTAGATGATGACACACTCATCAGCACACAGACCTGTTTTTGCTT
TCTCAGTTTGGCAGCAATTTCTGATCAAATTGTAGGATTTGTTCTAGAAAGCACGTCTCTACTTCATC
AGGTATCTACAGTTATGGAAGTTTTGAAATGCAAGCACCAGGGTCTGGAAATGGTGACCAGTACTCTATG
GTGCTGATTGGAGCCTCATTCTCAATAGCAAATATCTTGAATTTTCAGAGGCAACCTGCAGCTGTCC
ATGCTTTGATAGATGATACTCAAACCTGTGATGATTTGCCATGAATTTTATCATTGCCAAGCATATTGG
CAAGACTTCAGGGATATTTGTGAAGCCTGTAACATGGACAATTTGGAAAAAGAAACCAACAGTGGCTAT
TCTGGAATGTGGCATCGAGCTGAGCAGCTCTGCAGAGGCTTATTGTATAAATAAGCTTGTTAATATCT
ATGATAGCATGCCCTTAAGATACTCCAACATTATGATTTCCAGTTTGGTTTTCCATATGCCAACTACAA
AAGAAAAATA

ACGCGTACGCGGCCGCTCGAGCAGAAACTCATCTCAGAAGAGGATCTGGCAGCAAATGATATCCTGGATT
ACAAGGATGACGACGATAAGGTTTAA



[View online »](#)

Reconstitution Method:

1. Centrifuge at 5,000xg for 5min.
2. Carefully open the tube and add 100ul of sterile water to dissolve the DNA.
3. Close the tube and incubate for 10 minutes at room temperature.
4. Briefly vortex the tube and then do a quick spin (less than 5000xg) to concentrate the liquid at the bottom.
5. Store the suspended plasmid at -20°C. The DNA is stable for at least one year from date of shipping when stored at -20°C.

RefSeq: [NM_001033025.3](#)

RefSeq Size: 3181 bp

RefSeq ORF: 993 bp

Locus ID: 2135

UniProt ID: [Q9UBQ6](#)

Cytogenetics: 1p21.2

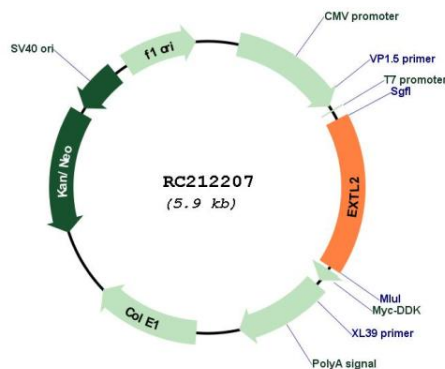
Protein Families: Transmembrane

Protein Pathways: Heparan sulfate biosynthesis

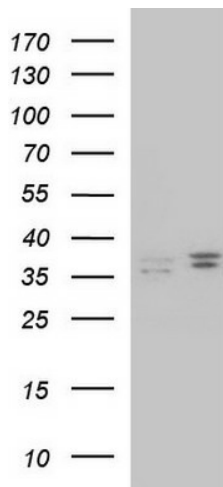
MW: 37.5 kDa

Gene Summary: Glycosyltransferase required for the biosynthesis of heparan-sulfate and responsible for the alternating addition of beta-1-4-linked glucuronic acid (GlcA) and alpha-1-4-linked N-acetylglucosamine (GlcNAc) units to nascent heparan sulfate chains.[UniProtKB/Swiss-Prot Function]

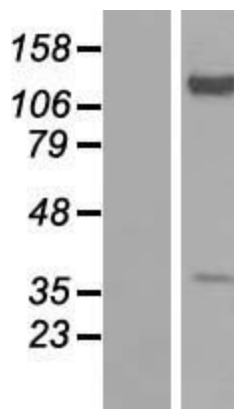
Product images:



Circular map for RC212207



HEK293T cells were transfected with the pCMV6-ENTRY control (Cat# [PS100001], Left lane) or pCMV6-ENTRY EXTL2 (Cat# RC212207, Right lane) cDNA for 48 hrs and lysed. Equivalent amounts of cell lysates (5 ug per lane) were separated by SDS-PAGE and immunoblotted with anti-EXTL2(Cat# [TA590761]). Positive lysates [LY422342] (100ug) and [LC422342] (20ug) can be purchased separately from OriGene.



Western blot validation of overexpression lysate (Cat# [LY422342]) using anti-DDK antibody (Cat# [TA50011-100]). Left: Cell lysates from untransfected HEK293T cells; Right: Cell lysates from HEK293T cells transfected with RC212207 using transfection reagent MegaTran 2.0 (Cat# [TT210002]).