

Product datasheet for RC212199

SPRED2 (NM_181784) Human Tagged ORF Clone

Product data:

Product Type:	Expression Plasmids
Product Name:	SPRED2 (NM_181784) Human Tagged ORF Clone
Tag:	Myc-DDK
Symbol:	SPRED2
Synonyms:	Spred-2
Mammalian Cell Selection:	Neomycin
Vector:	pCMV6-Entry (PS100001)
E. coli Selection:	Kanamycin (25 ug/mL)
ORF Nucleotide Sequence:	>RC212199 ORF sequence Red=Cloning site Blue=ORF Green=Tags(s)

TTTTGTAATACGACTCACTATAGGGCGGCCGGAATTCGTCGACTGGATCCGGTACCGAGGAGATCTGCC
GCC**CGATCGCC**

ATGACCGAAGAAACACACCCAGACGATGACAGCTATATTGTGCGTGTCAAGGCTGTGGTTATGACCAGAG
ATGACTCCAGCGGGGATGGTCCACAGGAAGGAGCGGGATCAGTCGCGTCGGGGTCTGTAAGGTCAT
GCACCCGAAGGCAATGGACGAAGCGGCTTTCATCCATGGTGAACGACAGAAAGACAACTGGTGTA
TTGGAATGCTATGTAAGAAAGGACTTGGTCTACACAAAGCCAATCCAACGTTTCATCACTGGAAGTGC
ATAATAGGAAGTTTGGACTTACTTTCCAAGCCCTGCTGATGCCGAGCCTTTGACAGGGGAGTAAGGAA
AGCAATCGAAGACCTTATAGAAGTTCAACAACGTCATCTCCACCATCCATAATGAAGCTGAGCTTGGC
GATGATGACGTTTTTACAACAGCTACAGACAGTCTTCTAATTCTCTCAGAAGAGAGCAACCTACTC
GGACAATCTCTCTCCACATCTGTGAGCACCAGGATTTATACCCTGGGCCACCTCCACGACTCATA
CCCCACAGACCACTATCACCTCGATCAGCCGATGCCAAGGCCCTACCGCCAGGTGAGCTTCCCGGACGAC
GACGAGGAGATCGTGCGCATCAACCCCGGGAGAAGATCTGGATGACGGGTACGAGGATTACCGGCACG
CACCCGTCAGGGGCAAGTACCCGACCCCTCGGAGGACGCGGACTCCTCCTACGTGCGCTTCGCCAAGGG
CGAGGTCCCAAGCATGACTACAACCTACCCTACGTGGACTCCTCAGACTTTGGCCTAGGCGAGGACCCC
AAAGGCCGCGGGGACAGGTGATCAAGACGCAGCCCTCCGCGGCAAGTCGCGGCGCGGAGAGGAGCG
GAGAGCGCTCGCGGTGCGTGTACTGCAGGACATGTTCAACCACGAGGAGAACCAGCGGGGCCACTGCCA
GGACGCGCCGACTCCGTGAGAATTGCATCCGCGGGTGGAGCTGCATGTGGTGCAGGACAGCATGCTC
TATCACTGTATGTGCGACCCGAGGGAGACTATACAGACCCTTGCTCGTGCGATACTAGCGACGAGAAGT
TTTGCCTCCGGTGGATGGCTCTTATTGCCTTGTCTTCTGGCCCCCTGTATGTGCTGTTACCTGCCCT
TCGGCCCTGCTACCACTGCGGAGTGTGTGAGGTGCTGTGGCGGAAGCACAAAGCGGCCGCG

ACGCGTACGCGGCCGCTCGAGCAGAACTCATCTCAGAAGAGGATCTGGCAGCAAATGATATCTGGATT
ACAAGGATGACGACGATAAGGTTTAA



[View online »](#)

Protein Sequence: >RC212199 protein sequence
Red=Cloning site Green=Tags(s)

MTEETHPDDSYIVRVKAVVMTRDDSSGGWFPQEGGGISRVGVCKVMHPEGNGRSGFLIHGERQKDKLVV
 LECYVRKDLVYTKANPTFHHWKVDNRKFLGTFQSPADARAFDRGVRKAIEDLIEGTTSSSTIHNEAELG
 DDDVFTTATDSSSNSSQKREQPTRTISSPTSCEHRIYTLGHLHDSYPTDHYHLDQPMRPYRQVSPD
 DEEIVRINPREKIWMGTGYEDYRHAPVRGKYDPDSEDADSSYVRFKGEVPKHDYNYPYVDSDFLGEDP
 KGRGGSVIKTQPSRGKSRRRKEDGERSRCVYCRDMFNHEENRRGHQCQDAPDSVRTCIRRVSCMWCADSM
 L YHCMSDPEGDYTPCSCDTSDEKFLRWMLIALSFLAPCMCCYLPLRACYHCGVMCRCCGGKHKAAA

TRTRPLEQKLISEEDLAANDILDYKDDDDKV

Chromatograms: https://cdn.origene.com/chromatograms/mk6467_g07.zip

Restriction Sites: SgfI-MluI

Cloning Scheme:



ACCN: NM_181784

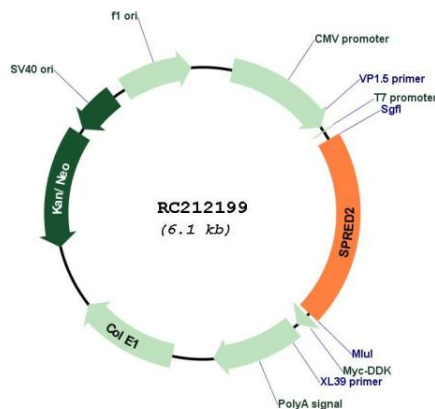
ORF Size: 1254 bp

OTI Disclaimer: Due to the inherent nature of this plasmid, standard methods to replicate additional amounts of DNA in E. coli are highly likely to result in mutations and/or rearrangements. Therefore, OriGene does not guarantee the capability to replicate this plasmid DNA. Additional amounts of DNA can be purchased from OriGene with batch-specific, full-sequence verification at a reduced cost. Please contact our customer care team at custsupport@origene.com or by calling 301.340.3188 option 3 for pricing and delivery.

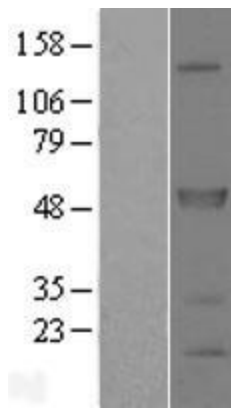
The molecular sequence of this clone aligns with the gene accession number as a point of reference only. However, individual transcript sequences of the same gene can differ through naturally occurring variations (e.g. polymorphisms), each with its own valid existence. This clone is substantially in agreement with the reference, but a complete review of all prevailing variants is recommended prior to use. [More info](#)

OTI Annotation:	This clone was engineered to express the complete ORF with an expression tag. Expression varies depending on the nature of the gene.
Components:	The ORF clone is ion-exchange column purified and shipped in a 2D barcoded Matrix tube containing 10ug of transfection-ready, dried plasmid DNA (reconstitute with 100 ul of water).
Reconstitution Method:	<ol style="list-style-type: none"> 1. Centrifuge at 5,000xg for 5min. 2. Carefully open the tube and add 100ul of sterile water to dissolve the DNA. 3. Close the tube and incubate for 10 minutes at room temperature. 4. Briefly vortex the tube and then do a quick spin (less than 5000xg) to concentrate the liquid at the bottom. 5. Store the suspended plasmid at -20°C. The DNA is stable for at least one year from date of shipping when stored at -20°C.
RefSeq:	<u>NM_181784.3</u>
RefSeq Size:	4457 bp
RefSeq ORF:	1257 bp
Locus ID:	200734
UniProt ID:	<u>Q7Z698</u>
Cytogenetics:	2p14
Protein Pathways:	Jak-STAT signaling pathway
MW:	47.6 kDa
Gene Summary:	SPRED2 is a member of the Sprouty (see SPRY1; MIM 602465)/SPRED family of proteins that regulate growth factor-induced activation of the MAP kinase cascade (see MAPK1; MIM 176948) (Nonami et al., 2004 [PubMed 15465815]).[supplied by OMIM, Mar 2008]

Product images:



Circular map for RC212199



Western blot validation of overexpression lysate (Cat# [LY405615]) using anti-DDK antibody (Cat# [TA50011-100]). Left: Cell lysates from untransfected HEK293T cells; Right: Cell lysates from HEK293T cells transfected with RC212199 using transfection reagent MegaTran 2.0 (Cat# [TT210002]).