

Product datasheet for **RC212196**

CRAT (NM_000755) Human Tagged ORF Clone

Product data:

Product Type:	Expression Plasmids
Product Name:	CRAT (NM_000755) Human Tagged ORF Clone
Tag:	Myc-DDK
Symbol:	CRAT
Synonyms:	CAT; CAT1; NBIA8
Mammalian Cell Selection:	Neomycin
Vector:	pCMV6-Entry (PS100001)
E. coli Selection:	Kanamycin (25 ug/mL)



[View online »](#)

ORF Nucleotide Sequence:

>RC212196 representing NM_000755
 Red=Cloning site Blue=ORF Green=Tags(s)

TTTTGTAATACGACTCACTATAGGGCGGCCGGAATTCGTCGACTGGATCCGGTACCGAGGAGATCTGCC
 GCC**CGCATCGCC**

ATGTTAGCCTTCGCTGCCAGGACCGTGGTGAAGCCTCTGGGCTTCTGAAGCCCTTCTCCTTGATGAAGG
 CTTCAGCCGCTTCAAGGCACACCAGGATGCACTGCCACGGCTGCCCGTGCCCTCTCCAGCAGTCCCT
 GGACCACTACCTGAAGGCGCTGCAGCCATCGTGAGTGAGGAGGAGTGGGCCACACCAAGCAGCTGGTG
 GATGAGTTTCAGGCCTCAGGAGGTGTAGGGGAGCGCTGCAGAAGGGGCTGGAGCGTCGGCCAGGAAGA
 CGGAGAACTGGCTGTCTGAGTGGTGGCTCAAGACCGCCTACCTCCAGTACCGCCAGCCTGTGGTCATCTA
 CTCGAGCCAGGCGTGATGCTACCCAAGCAGGACTTCGTGGACCTGCAGGGTCACTCCGATTTGCTGCC
 AAACCTATTGAGGGTGTGTTGGATTTCAAGGTCATGATTGACAACGAGACCCTGCCCGTGGAGTACCTGG
 GGGGAAGCCACTGTGCATGAACCAAGTACTATCAGATCTTGTCTCCTGCCGAGTCCCGGGCCCAAGCA
 GGACACAGTCAGCAACTCAGCAAGACCAAGAAGCCTCCACGCACATCACCGTGTACACAACCTACCAG
 TTTTTGAGCTGGATGTGTACCACAGTGACGGGACACCCCTCACTGCGGATCAGATCTTTGTGCAGCTGG
 AGAAGATCTGAACTCATCCCTACAGACCAACAAGGAGCCTGTGGGCATCCTCACCTCCAACCACCGCAA
 CTCCTGGGCCAAGGCATACAACACCCCTCATCAAAGACAAGGTGAACCGGGATTCCGTGCGCTCCATCCAG
 AAGAGCATCTTACCCTGTGCCTAGATGCAACCATGCCAGGGTCTCAGAAGACGTGTACCGCAGCCACG
 TGGCAGGCCAGATGTGCATGGGGCGGCAGCAGGCTCAACAGCGGCAACCGCTGGTTCGACAAGACGCT
 GCAGTTTCACTCGTGGCAAAAGATGGCTCCTGTGGCTTGTGTACGAGCATGCTGCAGCGGAGGGGCCCT
 ATGTGACCCCTTCTGGACTATGTATCGAGTACACGAAGAAACCGAGCTTGTGCGGTCTCCCATGGTGC
 CCTGCCATGCCAAGAAGCTGCGTTCAACATCACCCCGAGATCAAGAGCGACATCGAGAAGGCCAA
 GCAGAACCTCAGCATCATGATCCAGGACCTGGATATCACCGTGTGGTGTCCACCATTTTGAAAAGAC
 TCCCCAAGTCGAGAAGCTAAGCCAGATGCCTTCATCCAGATGGCTTTCAGCTGGCCTACTACAGGA
 TCTACGGACAGGCATGTGCCACCTATGAAAGTGCCTCCCTGCGCATGTTTCACCTGGGCCGACCGACAC
 CATCCGCTCGGCTTCCATGGACTCACTCACCTTGTCAAGGCCATGGATGACTCCAGCGTCACGGAGCAC
 CAGAAGGTGGAGCTGCTGCGGAAGGCCGTGCAGGCCACCGAGGCTACACCGACCGGCCATCCGCGGGG
 AGGCCTTTGATCGACACCTGCTGGGCTGAAGCTGCAGGCCATCGAGGACCTGGTGAAGTATGCCGACAT
 CTTTATGGACACCTCCTACGCCATCGCCATGCACCTTCCACCTCTCCACCAGCCAGGTCCTGCCAAGACA
 GACTGTGTATGTTCTTCCGGCCGTGGTCCCCGACGGCTACGGTGTCTGCTATAACCCCATGGAGGCC
 ACATCAACTTCTCCCTGTCCGCTACAACAGCTGCGCGGAGACCAACGCCGCCCGCTGGCGCATTACCT
 GGAGAAGGCGCTCCTGGACATGCGTGCCTGCTGCAGAGCCACCCCGGGCCAAGCTC

ACGCGTACGCGGCCGCTCGAGCAGAACTCATCTCAGAAGAGGATCTGGCAGCAATGATATCCTGGATT
 ACAAGGATGACGACGATAAGGTTTAA

Protein Sequence:

>RC212196 representing NM_000755
 Red=Cloning site Green=Tags(s)

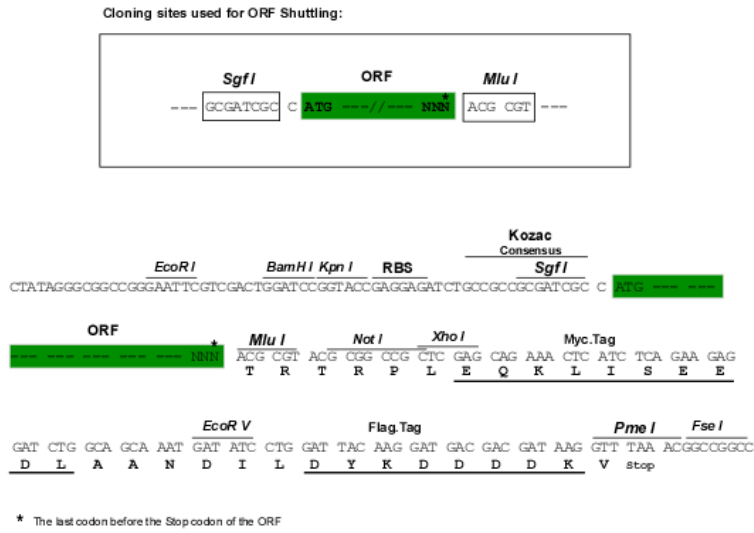
MLAFAARTVVKPLGFLKPFSLMKASSRFKAHQDALPRLPVPPLQQSLDHYLKALQPIVSEEEWAHTKQLV
 DEFQASGGVGERLQKGLERRARKTENWLSEWWLKTAYLQYRQPVIYSSPGVMLPKQDFVDLQGLRFAA
 KLIEGVLDKVMIDNETLPVEYLGKPLCMNQYQILSSCRVPGPKQDTSVNSFSKTKKPPHTITVHNYQ
 FFELDVYHSDGTPLTADQIFVQLEKIWNSSLQTNKEPVGILTSNHRNSWAKAYNTLIKDKVNRDSVRSIQ
 KSIFTVCLDATMPRVSEDVYRSHVAGQMLHGGGSRNLNSGNRWFDTLQFIVAKDGCGLVYEHAAEGPP
 IVTLLDYVIEYTKPELVRSPMVPPLPMPKLRFNITPEIKSDIEKAKQNLSIMIQDLITVMVFHFGKD
 FPKSEKLSFDAFIQMALQLAYRYIQACATYESASLRMFHLGRTDITRSASMSLTFVKAMDDSSVTEH
 QKVELLRKAVQAHRGYTDRAIRGEAFDRHLLGLKQAIEDLVSMPIFMDTSYAIAMHFLSTSQVPAKT
 DCVMFFGPVVPDGYGVYCNPMEAHINFSLSAYNSCAETNAARLAHYLEKALLDMRALLQSHPRAKL

TRTRPLEQKLISEEDLAANDILDYKDDDDKV

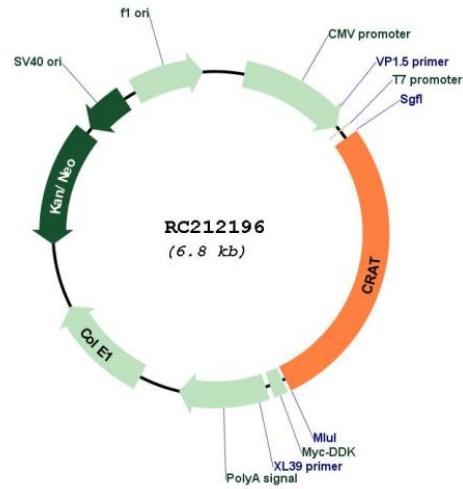
Chromatograms: https://cdn.origene.com/chromatograms/mk6200_a03.zip

Restriction Sites: SgfI-MluI

Cloning Scheme:



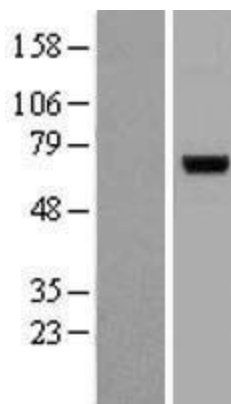
Plasmid Map:



ACCN: NM_000755

ORF Size: 1878 bp

OTI Disclaimer:	The molecular sequence of this clone aligns with the gene accession number as a point of reference only. However, individual transcript sequences of the same gene can differ through naturally occurring variations (e.g. polymorphisms), each with its own valid existence. This clone is substantially in agreement with the reference, but a complete review of all prevailing variants is recommended prior to use. More info
OTI Annotation:	This clone was engineered to express the complete ORF with an expression tag. Expression varies depending on the nature of the gene.
Components:	The ORF clone is ion-exchange column purified and shipped in a 2D barcoded Matrix tube containing 10ug of transfection-ready, dried plasmid DNA (reconstitute with 100 ul of water).
Reconstitution Method:	<ol style="list-style-type: none">1. Centrifuge at 5,000xg for 5min.2. Carefully open the tube and add 100ul of sterile water to dissolve the DNA.3. Close the tube and incubate for 10 minutes at room temperature.4. Briefly vortex the tube and then do a quick spin (less than 5000xg) to concentrate the liquid at the bottom.5. Store the suspended plasmid at -20°C. The DNA is stable for at least one year from date of shipping when stored at -20°C.
RefSeq:	NM_000755.5
RefSeq Size:	2804 bp
RefSeq ORF:	1881 bp
Locus ID:	1384
Cytogenetics:	9q34.11
Domains:	Carn_acyltransf
Protein Families:	Druggable Genome
MW:	70.87 kDa
Gene Summary:	This gene encodes carnitine O-acetyltransferase, a member of the carnitine acyltransferase family and a key metabolic pathway enzyme which plays an important role in energy homeostasis and fat metabolism. This enzyme catalyzes the reversible transfer of acyl groups from an acyl-CoA thioester to carnitine and regulates the ratio of acyl-CoA/CoA. It is found in both the mitochondria and the peroxisome. Alternative splicing results in transcript variants encoding different isoforms that may localize to different subcellular compartments. [provided by RefSeq, Oct 2016]

Product images:

Western blot validation of overexpression lysate (Cat# [LY400255]) using anti-DDK antibody (Cat# [TA50011-100]). Left: Cell lysates from untransfected HEK293T cells; Right: Cell lysates from HEK293T cells transfected with RC212196 using transfection reagent MegaTran 2.0 (Cat# [TT210002]).