

## Product datasheet for **RC212194**

### VGLL2 (NM\_153453) Human Tagged ORF Clone

#### Product data:

**Product Type:** Expression Plasmids  
**Product Name:** VGLL2 (NM\_153453) Human Tagged ORF Clone  
**Tag:** Myc-DDK  
**Symbol:** VGLL2  
**Synonyms:** VGL2; VITO1  
**Mammalian Cell Selection:** Neomycin  
**Vector:** pCMV6-Entry (PS100001)  
**E. coli Selection:** Kanamycin (25 ug/mL)  
**ORF Nucleotide Sequence:** >RC212194 representing NM\_153453  
**Red=Cloning site Blue=ORF Green=Tags(s)**

TTTTGTAATACGACTCACTATAGGGCGGCCGGAATTCGTCGACTGGATCCGGTACCGAGGAGATCTGCC  
GCC**CGATCGCC**

ATGAGCTGTCTGGATGTTATGTACCAAGTCTATGGTCCTCCGCAGCCCTACTTCGCAGCCGCTACACCC  
CCTACCACCAGAACTAGCCTATTATCCAAAATGCAGGAAGCGCAGGAGTGCAATGCCAGCCCCAGCAG  
CAGTGGCAGCGGCAGCTCCTCATTTCCAGCCAAACCCAGCCAGTATAAAAGAGGAAGAAGGCAGCCCA  
GAGAAAGAGCGCCACCAGAGGCAGAGTACATCAACTCCCCTGCGTCTCTCACTTATTTCCAGGGG  
ACATCAGCTCCGTGGTGGATGAACATTTACAGAGGCCCTGAGCCAACCCAGCAGCTACTCTCCTAGCTG  
TACCAGCAGCAAAGCACCAAGGAGCTCTGGGCCCTGGCGAGCTCGTCGTTATCCCTCTGTGGTGCATCC  
CTCCTGAGC

**ACGCGT**ACGCGGCCGCTCGAGCAGAACTCATCTCAGAAGAGGATCTGGCAGCAAATGATATCCTGGATT  
ACAAGGATGACGACGATAAGGTTTAA

**Protein Sequence:** >RC212194 representing NM\_153453  
**Red=Cloning site Green=Tags(s)**  
MSCLDVMYQVYGPPQPYFAAAYTPYHQKLAYYSKMQEAQECNASPSSSGSGSSSFSSQTPASIKKEEGSP  
EKERPPEAEYINSRCVLFYTFYQGDISSVVEHFSTRALSQPSSYSPTSCTSSKAPRSSGPWRARRYSLGCAS  
LLS

**TRTRPLEQKLI**SEEDLAANDILDYKDDDDKV

**Chromatograms:** [https://cdn.origene.com/chromatograms/ja1448\\_a07.zip](https://cdn.origene.com/chromatograms/ja1448_a07.zip)



[View online >](#)

Restriction Sites: SgfI-MluI

Cloning Scheme:



ACCN: NM\_153453

ORF Size: 429 bp

OTI Disclaimer: The molecular sequence of this clone aligns with the gene accession number as a point of reference only. However, individual transcript sequences of the same gene can differ through naturally occurring variations (e.g. polymorphisms), each with its own valid existence. This clone is substantially in agreement with the reference, but a complete review of all prevailing variants is recommended prior to use. [More info](#)

OTI Annotation: This clone was engineered to express the complete ORF with an expression tag. Expression varies depending on the nature of the gene.

Components: The ORF clone is ion-exchange column purified and shipped in a 2D barcoded Matrix tube containing 10ug of transfection-ready, dried plasmid DNA (reconstitute with 100 ul of water).

Reconstitution Method:

1. Centrifuge at 5,000xg for 5min.
2. Carefully open the tube and add 100ul of sterile water to dissolve the DNA.
3. Close the tube and incubate for 10 minutes at room temperature.
4. Briefly vortex the tube and then do a quick spin (less than 5000xg) to concentrate the liquid at the bottom.
5. Store the suspended plasmid at -20°C. The DNA is stable for at least one year from date of shipping when stored at -20°C.

RefSeq: [NM\\_153453.1](#), [NP\\_703154.1](#)

RefSeq Size: 1709 bp

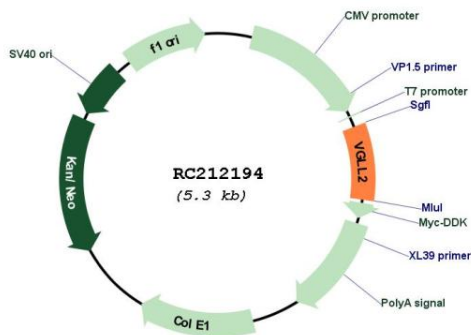
RefSeq ORF: 432 bp

Locus ID: 245806

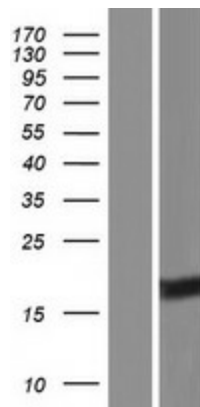
UniProt ID: [Q8N8G2](#)  
 Cytogenetics: 6q22.1  
 MW: 15.5 kDa

**Gene Summary:** This gene encodes a protein with a transcriptional enhancer factor 1 (TEF-1) interaction domain. The encoded protein may act as a co-factor of TEF-1 regulated gene expression during skeletal muscle development. Alternatively spliced transcript variants encoding multiple isoforms have been observed. [provided by RefSeq, Jul 2012]

**Product images:**



Circular map for RC212194



Western blot validation of overexpression lysate (Cat# [LY407038]) using anti-DDK antibody (Cat# [TA50011-100]). Left: Cell lysates from untransfected HEK293T cells; Right: Cell lysates from HEK293T cells transfected with RC212194 using transfection reagent MegaTran 2.0 (Cat# [TT210002]).