

Product datasheet for RC212192

DNASE2B (NM_021233) Human Tagged ORF Clone

Product data:

Product Type:	Expression Plasmids
Product Name:	DNASE2B (NM_021233) Human Tagged ORF Clone
Tag:	Myc-DDK
Symbol:	DNASE2B
Synonyms:	DLAD
Mammalian Cell Selection:	Neomycin
Vector:	pCMV6-Entry (PS100001)
E. coli Selection:	Kanamycin (25 ug/mL)
ORF Nucleotide Sequence:	>RC212192 ORF sequence Red=Cloning site Blue=ORF Green=Tags(s)

TTTTGTAATACGACTCACTATAGGGCGCCGGGAATTCGTCGACTGGATCCGGTACCGAGGAGATCTGCC
GCC**CGATCGCC**

ATGATGGCAAGACTGCTAAGAACATCCTTTGCTTTGCTCTTCCTTGGCCTCTTTGGGGTCTGGGGCAG
CAACAATTTTCATGCAGAAATGAAGAAGGAAAGCTGTGGACTGGTTACTTTTTATAAGTTACCTAAAA
ACAAAACAAGGAAAGTGGAGAGACTGGTTAGAGTACCTGTACCTAGACTCTACAACAGAAAGCTGGAGG
AAGAGTGAGCAACTAATGAATGACACCAAGAGTGTGGGAAGGACATTACAACAGCTATATGAAGCAT
ATGCCTCTAAGAGTAACAACACAGCCTATCTAATATACAATGATGGAGTCCCTAAACCTGTGAATTACAG
CAGAAAGTATGGACACACCAAGGTTTACTGCTGTGGAACAGAGTTCAAGGGTCTGGCTGATTCATTCC
ATCCCTCAGTTTCTCCAATCCGGAAGAAGGCTATGATTATCCACCCACAGGGAGACGAAATGGACAAA
GTGGCATCTGCATAACTTTCAAGTACAACCAGTATGAGGCAATAGATTCTCAGCTCTTGGTCTGCAACCC
CAACGTCTATAGCTGCTCCATCCAGCCACCTTACCAGGAGCTCATTACATGCCCGAGCTGTGCACC
AGGGCCAGCTCATCAGAGATTCTGGCAGGCTCCTCACCACACTTCAGTCGGCCAGGGACAAAAATTC
TCCATTTTGCAAAGTCGGATTCTTTCTTGACGACATCTTTCAGCCTGGATGGCTCAACGGCTGAAGAC
ACACTTGTAAACAGAAACCTGGCAGCGAAAAAGACAAGAGCTTCCTTCAAACCTGCTCCCTTCCTTACCAT
GTCTACAATATAAAGCAATTAATTATCAGCAGACTCTTATTTTCAGTTCTTATCAAGATCAGCCCAAGT
GGTGATTTCCCAAAGGGCACCAAAAATCGCTGGACATGTATTGGAGACCTAAATCGGAGTCCACACCA
AGCCTTCAGAAGTGGAGGATTCTTTGTACCCAGAATTGGCAAATTTACCAAGCATTTCAAGGATTAGTA
TTATACTATGAAAGCTGTAAG

ACGCGTACGCGGCCGCTCGAGCAGAAACTCATCTCAGAAGAGGATCTGGCAGCAAATGATATCCTGGATT
ACAAGGATGACGACGATAAGGTTAA



[View online »](#)

Protein Sequence: >RC212192 protein sequence
Red=Cloning site Green=Tags(s)

MMARLLRTSFALLFLGLFGVLGAATISCRNEEGKAVDWF TFYKLPKKQNKESGETGLEYL YLDSTTRSWR
 KSEQLMNDTKSVLGR TLQQLYEAYASKSNNTAYLIYNDGVPKPNYSRKYGHTKGLLLWNRVQGFWLIHS
 IPQFPPIPEEGDY PPTGRRNGQSGICITFKYNQYEAIDSQLLVCNPNVYSCSIPATFFHQELIHMPQLCT
 RASSEIPGRLL TTLQSAQGQKFLHF AKSDSFLDDIFAAWMAQR LKTHLLTETWQRKRQELPSNCSLPYH
 VYNIKAIKLSRHSYFSSYQDHAKWCISQKGTKNRWT CIGDLNRS PHQAFRSGGF ICTQNWQIYQAFQGLV
 LYYESCK

TRTRPLEQKLISEEDLAANDILDYKDDDDKV

Chromatograms: https://cdn.origene.com/chromatograms/mk6465_d02.zip

Restriction Sites: SgfI-MluI

Cloning Scheme:



ACCN: NM_021233

ORF Size: 1071 bp

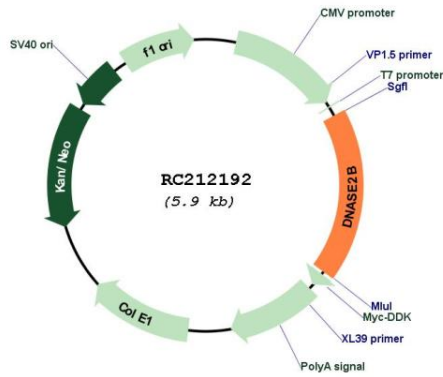
OTI Disclaimer: The molecular sequence of this clone aligns with the gene accession number as a point of reference only. However, individual transcript sequences of the same gene can differ through naturally occurring variations (e.g. polymorphisms), each with its own valid existence. This clone is substantially in agreement with the reference, but a complete review of all prevailing variants is recommended prior to use. [More info](#)

OTI Annotation: This clone was engineered to express the complete ORF with an expression tag. Expression varies depending on the nature of the gene.

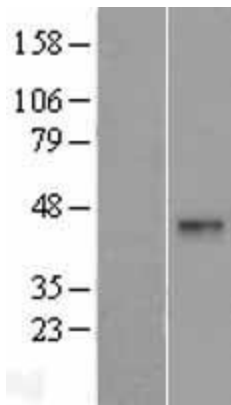
Components: The ORF clone is ion-exchange column purified and shipped in a 2D barcoded Matrix tube containing 10ug of transfection-ready, dried plasmid DNA (reconstitute with 100 ul of water).

Reconstitution Method:	<ol style="list-style-type: none">1. Centrifuge at 5,000xg for 5min.2. Carefully open the tube and add 100ul of sterile water to dissolve the DNA.3. Close the tube and incubate for 10 minutes at room temperature.4. Briefly vortex the tube and then do a quick spin (less than 5000xg) to concentrate the liquid at the bottom.5. Store the suspended plasmid at -20°C. The DNA is stable for at least one year from date of shipping when stored at -20°C.
Note:	Plasmids are not sterile. For experiments where strict sterility is required, filtration with 0.22um filter is required.
RefSeq:	NM_021233.1
RefSeq Size:	1279 bp
RefSeq ORF:	1086 bp
Locus ID:	58511
UniProt ID:	Q8WZ79
Cytogenetics:	1p31.1-p22.3
Protein Families:	Transmembrane
Protein Pathways:	Lysosome
MW:	41.2 kDa
Gene Summary:	The protein encoded by this gene shares considerable sequence similarity to, and is structurally related to DNase II. The latter is a well characterized endonuclease that catalyzes DNA hydrolysis in the absence of divalent cations at acidic pH. Unlike DNase II which is ubiquitously expressed, expression of this gene product is restricted to the salivary gland and lungs. The gene has been localized to chromosome 1p22.3 adjacent (and in opposite orientation) to the uricase pseudogene. Two transcript variants encoding different isoforms have been described for this gene. [provided by RefSeq, Jul 2008]

Product images:



Circular map for RC212192



Western blot validation of overexpression lysate (Cat# [LY411990]) using anti-DDK antibody (Cat# [TA50011-100]). Left: Cell lysates from untransfected HEK293T cells; Right: Cell lysates from HEK293T cells transfected with RC212192 using transfection reagent MegaTran 2.0 (Cat# [TT210002]).