

## Product datasheet for **RC212191**

### Annexin A11 (ANXA11) (NM\_001157) Human Tagged ORF Clone

#### Product data:

Product Type:	Expression Plasmids
Product Name:	Annexin A11 (ANXA11) (NM_001157) Human Tagged ORF Clone
Tag:	Myc-DDK
Symbol:	Annexin A11
Synonyms:	ALS23; ANX11; CAP-50; CAP50
Mammalian Cell Selection:	Neomycin
Vector:	pCMV6-Entry (PS100001)
E. coli Selection:	Kanamycin (25 ug/mL)



[View online »](#)

**ORF Nucleotide Sequence:**

>RC212191 ORF sequence  
 Red=Cloning site Blue=ORF Green=Tags(s)

TTTTGTAATACGACTCACTATAGGGCGGCCGGAATTCGTCGACTGGATCCGGTACCGAGGAGATCTGCC  
 GCC**CGGATCGCC**

ATGAGCTACCCTGGCTATCCCCGCCCCAGTGGCTACCCACCAGCTGCACCAGTGGTGGTCCCTGGG  
 GAGGTGCTGCCTACCCTCCTCCGCCAGCATGCCCCCATCGGGCTGGATAACGTGGCCACTATGCGGG  
 GCAGTTCAACCAGGACTATCTCTCGGGAATGGCGGCAACATGTCTGGGACATTTGGAGGAGCAACATG  
 CCCAACCTGTACCCTGGGGCCCCGGGGCTGGCTACCCACCAGTCCCCCTGGCGGCTTTGGGCAGCCCC  
 CCTCTGCCAGCAGCCTGTTCTCCCTATGGGATGTATCCACCCAGGAGGAAACCCACCTCCAGGAT  
 GCCCTCATATCCGCCATACCCAGGGGCCCTGTGCCGGGCCAGCCATGCCACCCCGGACAGCAGCCC  
 CCAGGGGCTACCCTGGCAGCCACCAGTGACCTACCCTGGTCAAGCTCCAGTCCACTCCCTGGGCAGC  
 AGCAGCCAGTCCGAGCTACCCAGGATACCCGGGGTCTGGGACTGTACCCCGCTGTGCCCAACCCA  
 GTTTGGAAAGCCGAGGCACCATCACTGATGCTCCCGGCTTTGACCCCTGCGAGATGCCGAGTCTCGCG  
 AAGCCATGAAAGGCTTCGGGACGGATGAGCAGGCCATCATTGACTGCCTGGGGAGTCGCTCCAACAAGC  
 AGCGGCAGCAGATCCTACTTTCTTCAAGACGGCTTACGCAAGGATTTGATCAAAGATCTGAAATCTGA  
 ACTGTCAGGAACTTTGAGAAGACAATCTTGGCTCTGATGAAGACCCAGTCTCTTTGACATTTATGAG  
 ATAAAGGAAGCCATCAAGGGGTTGGCACTGATGAAGCCTGCCTGATTGAGATCCTCGCTTCCCGCAGCA  
 ATGAGCACATCCGAGAATTAACAGAGCCTACAAAGCAGAATCAAAAAGACCCTGGAAGAGGCCATTCCG  
 AAGCGACATCAGGGCACTTCCAGCGGCTCCTCATCTCTCTCAGGGAAACCGTGTGAAAGCACA  
 AACGTGGACATGTCACTCGCCAGAGAGATGCCAGGAGCTGTATGCCGGCGGGGAGAACCGCTGGGAA  
 CAGACGAGTCCAAGTTCAATGCGGTTCTGTGCTCCCGGAGCCGGGCCACCTGGTAGCAGTTTTCAATGA  
 GTACCAGAGAATGACAGGCCGGGACATTGAGAAGAGCATCTGCCGGGAGATGTCCGGGGACTGGAGGAG  
 GGCATGCTGGCCGTGGTAAATGTCTCAAGAATACCCAGCCTTCTTTGCGGAGAGGCTCAACAAGGCCA  
 TGAGGGGGCAGGAACAAGACCAGCCCTGATTGCGATCATGGTGTCTCGCAGCAGAGCCGACCTCCT  
 GGACATCAGATCAGAGTATAAGCGGATGTACGGCAAGTCGCTGTACCACGACATCTCGGGAGATACTTCA  
 GGGGATTACCGGAAGATTCTGCTGAAGATCTGTGGTGGCAATGAC

**ACGCGT**ACGCGGCCGCTCGAGCAGAACTCATCTCAGAAGAGGATCTGGCAGCAAATGATATCCTGGATT  
 ACAAGGATGACGACGATAAGGTTTAA

**Protein Sequence:**

>RC212191 protein sequence  
 Red=Cloning site Green=Tags(s)

MSYPGYPPPPGGYPPAAPGGGPWGGAAYPSPMPPVIGLDNVATYAGQFNQDYLSGMAANMSGTFGGANM  
 PNLYPGAPGAGYPPVPPGGFGQPPSAQQPVPPYGMYPGGNPPSRMPSYPPYPGAPVPGQPMPPPGQQP  
 PGAYPGQPPVTPGQPPVPLPGQQPVPSYPYPGSGTVTPAVPPTQFGSRGITDAPGFDPLRDAEVLK  
 KAMKGFGTDEQAIIDCLGSRSNQRQQILLSFKTAYGKDLIKDLKSELGNFEKTILALMKTPVLFDIYE  
 IKEAIKGVGTDEACLEILASRSNEHIRELNRAYKAFFKTLLEAIRSDTSGHFQRLILSLSQNRDEST  
 NVDMSLAQRDAQELYAAGENRLGTDESKFNAVLCSRSRAHLVAVFNEYQRMTGRDIEKSICREMSGDLEE  
 GMLAVVKCLKNTPAFFAERLNKAMRGAGTKDRTLIRIMVSRSETDLDIRSEYKRMYGKSLYHDISGDT  
 GDYRKILLKICGGND

**TRTRPLEQKLI**SEEDLAANDILDYKDDDDKV

**Chromatograms:**

[https://cdn.origene.com/chromatograms/mk6413\\_f01.zip](https://cdn.origene.com/chromatograms/mk6413_f01.zip)

**Restriction Sites:**

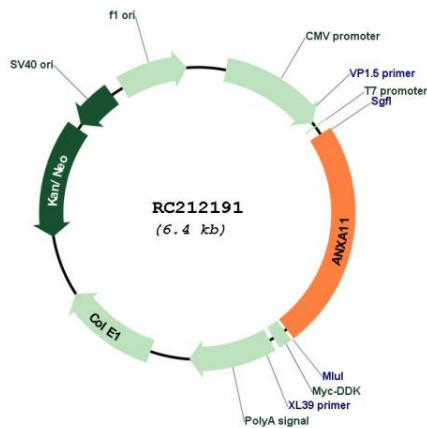
Sgfl-Mlul



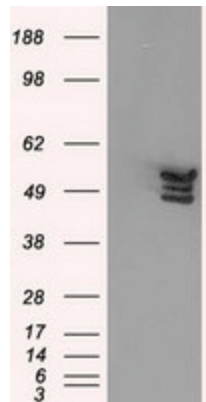
**UniProt ID:** [P50995](#)  
**Cytogenetics:** 10q22.3  
**Domains:** annexin  
**MW:** 54.4 kDa

**Gene Summary:** This gene encodes a member of the annexin family, a group of calcium-dependent phospholipid-binding proteins. Annexins have unique N-terminal domains and conserved C-terminal domains, which contain calcium-dependent phospholipid-binding sites. The encoded protein is a 56-kD antigen recognized by sera from patients with various autoimmune diseases. Several transcript variants encoding two different isoforms have been identified. [provided by RefSeq, Dec 2015]

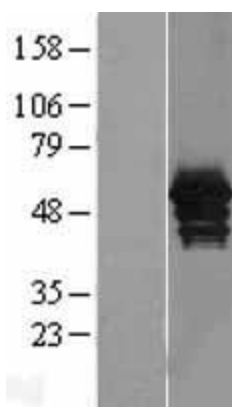
### Product images:



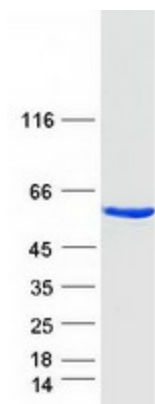
Circular map for RC212191



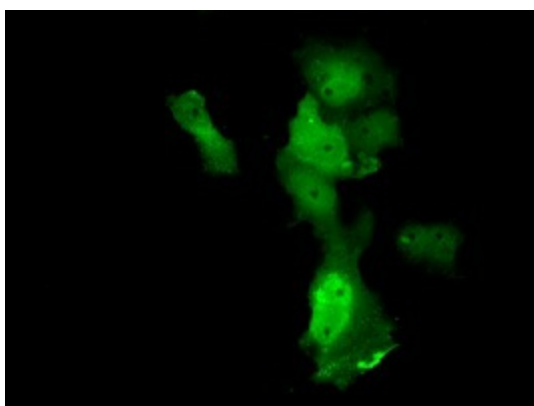
HEK293T cells were transfected with the pCMV6-ENTRY control (Cat# [PS100001], Left lane) or pCMV6-ENTRY ANXA11 (Cat# RC212191, Right lane) cDNA for 48 hrs and lysed. Equivalent amounts of cell lysates (5 ug per lane) were separated by SDS-PAGE and immunoblotted with anti-ANXA11 (Cat# [TA500950]). Positive lysates [LY420097] (100ug) and [LC420097] (20ug) can be purchased separately from OriGene.



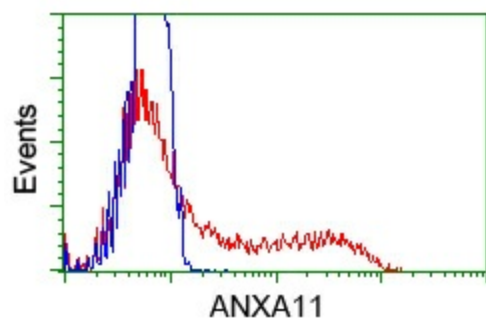
Western blot validation of overexpression lysate (Cat# [LY420097]) using anti-DDK antibody (Cat# [TA50011-100]). Left: Cell lysates from untransfected HEK293T cells; Right: Cell lysates from HEK293T cells transfected with RC212191 using transfection reagent MegaTran 2.0 (Cat# [TT210002]).



Coomassie blue staining of purified ANXA11 protein (Cat# [TP312191]). The protein was produced from HEK293T cells transfected with ANXA11 cDNA clone (Cat# RC212191) using MegaTran 2.0 (Cat# [TT210002]).



Anti-ANXA11 mouse monoclonal antibody ([TA500950]) immunofluorescent staining of COS7 cells transiently transfected by pCMV6-ENTRY ANXA11 (RC212191).



HEK293T cells transfected with either pCMV6-ENTRY ANXA11 (RC212191) (Red) or empty vector control plasmid (Blue) were immunostained with anti-ANXA11 mouse monoclonal ([TA500950]), and then analyzed by flow cytometry.