

Product datasheet for **RC212185**

Breast cancer suppressor candidate 1 (VWA5A) (NM_014622) Human Tagged ORF Clone

Product data:

Product Type:	Expression Plasmids
Product Name:	Breast cancer suppressor candidate 1 (VWA5A) (NM_014622) Human Tagged ORF Clone
Tag:	Myc-DDK
Symbol:	Breast cancer suppressor candidate 1
Synonyms:	BCSC-1; BCSC1; LOH11CR2A
Mammalian Cell Selection:	Neomycin
Vector:	pCMV6-Entry (PS100001)
E. coli Selection:	Kanamycin (25 ug/mL)



[View online »](#)

ORF Nucleotide Sequence:

>RC212185 representing NM_014622
 Red=Cloning site Blue=ORF Green=Tags(s)

TTTTGTAATACGACTCACTATAGGGCGGCCGGGAATTCGTCGACTGGATCCGGTACCGAGGAGATCTGCC
 GCC**CGGATCGCC**

ATGGTGCACCTTCTGTGGCCTACTCACCTCCACCGGGAGCCAGTCCCGCTGAAGAGTATCTCTGTGAGCG
 TGAACATTTACGAGTTTGTGGCTGGTGTGTCTGCAACTTTGAACTACGAGAATGAGGAGAAAAGTTCTTTT
 GGAGGCCCTTTTGTGTTCCCATGGATGAAGACTCTGCTGTTTACAGCTTTGAGGCCTTGGTGGATGGG
 AAGAAAATTGTAGCAGAATTACAAGACAAGATGAAGGCCCGCACCAACTATGAGAAAAGCCATCTCCCAGG
 GCCACCAGGCCTTCTATTGGAGGGGGACAGCAGCTCCAGGGATGTCTTCTCTTGAATGTGGGTAACTT
 CCAACCTGGGTGGAAGGCGGCAGTACCCTGAAGTATGTGCAGGAGCTGCCTCTGGAAGCAGATGGGGCT
 CTGCGCTTTGTGCTCCAGCTGTCTGAATCCTAGATACCAGTCTCTGGGTCGCTAAGGACAGTTGCC
 TTAATGTGAAGACTCCTATAGTCCCTGTGGAGGACCTGCCCTACACACTCAGCATGGTCGCCACCATAGA
 TTCCCAGCATGGCATTGAGAAGTCCAATCCAAGTCCCTTGTAGTCTACCGAGTACCTAGGAGAGGAC
 AAGACTTCTGCTCAGTTTCCCTGGCTGCTGGACACAAGTTTGATCGGGACGTGGAACCTCTGATTTACT
 ACAATGAGGTGCATACCCCCAGCGTGGTTTTGGAGATGGGGATGCCTAACATGAAGCCAGGTCATTTGAT
 GGGAGATCCATCTGCAATGGTGAAGTTTCTATCCAAATATCCCAGAAGATCAACCATCAAATACCTGTGGA
 GAGTTTATCTTTCTATGGACCGCTCGGGAAGTATGCAGAGCCCCATGAGTAGCCAGGATACATCTCAGC
 TGCGAATACAGGCAGCCAAGGAAACTGATTTTGTGCTGAAGAGTTTACCTATAGGCTGTTATTTCAA
 CATCTATGGATTTGGCTCTTCTATGAGGCATGCTTTCCGGAGAGTGTGAAGTACACTCAGCAAACAATG
 GAGGAGGCTCTGGGGAGAGTGAAGCTTATGCAGGCCGACCTAGGGGCACTGAAATCTTGGCACCCTCC
 AGAACAATTTACAGGGACCTCCATCCCAGGCCACCCCTACAGCTTTTTGTCTTTACAGATGGAGAAGT
 TACAGACACGTTTGTGTAATTAAGAAGTTAGGATCAACAGACAGAAACACAGGTGTTTCTCATTGGT
 ATTGGAGAAGGCACCTCCACCAGCCTAATAAAAGGATTGCCCCGGGCATCAGGGGACCTCAGAATTTA
 TCACAGGCAAAGACAGGATGCAGTCCAAGGCTCTCAGGACTCTGAAACGCTCTCTGCAGCCTGTGGTAGA
 GGATGTCTCTGAGCTGGCATTGCTCCTGGTCTGTCTGCTAAAATGCTTTCCCAGAACAGACTGTC
 ATCTTTAGGGGTCAGAGATTAATCAGCTATGCCAGCTGACCGGGAGGATGCCAGCAGCAGAGACAACAG
 GAGAAGTATGCCTCAAATATACTCCAGGGCAAGACTTTGAGGATAAGGTGACATTTCTCTACAACC
 CAAGCCTGATGTCAACCTCACCATTACCAGCTTGTGCAAGTCTTGTCCAGACCAAGGACATGGGC
 CTCAGGGAGACTCCAGCAAGTATAAAAAAGATGCATTGAACCTTAGCCTTGAGTCTGGTGTCAAGCT
 CCTTCACAGCTTTTATTGCTATCAATAAGGAGCTCAACAAGCCGTTTCCAGGGCCTCTGGCTCATAGGGA
 CGTCCCAAGGCCAATTCTGTTGGGTGCTTCTGCCCATTTGAAGATAAAATGCCAATCAGGTTTTTCGAAAG
 GCCTTACACTCTGACCGTCTCCTTCTGCATCTCAGCCCAGAGGGGAACTTATGTGTTATAAGGCCAAGA
 CATTCCAGATGGACGATTACAGTCTCTGTGGTTGATAAGTACAAAGGACCAGCAGTCCAGGCTTTGG
 AGAGAATCACCTTGTGCAGCTGATTTACCACAAAATGCAAAATGGTTCTGGGATCTGAATGAAGATCTA
 GCCAAGATCCTAGGTATGAGTTTGAAGAAATAATGGCTGCACAGCCTGCCGAGCTTGTGGATTCTCAG
 GCTGGGCCACCATCTGGCCGTGATCTGGCTGCACAGCAATGGTAAGGACTTGAAGTGTGAATGGGAGCT
 TCTGAAAAGGAAGGCCGTGGCTGGATGCGTGCCATGCAGGCTCCACCATGCCTTCGGTTGTGAAAGCT
 GCTATTACTTTCTGAAGTCATCTGTGGATCCTGCTATCTTTGCCTTT

ACGCGTACGCGGCCGCTCGAGCAGAACTCATCTCAGAAGAGGATCTGGCAGCAAATGATATCCTGGATT
 ACAAGGATGACGACGATAAGGTTTAA

Protein Sequence: >RC212185 representing NM_014622
Red=Cloning site Green=Tags(s)

MVHFCGLLTLHREPVPLKSI SVSVNIYEFVAGVSATLNYENEKVPLEAFFVFPMDSDAVYSFEALVDG
KKIIVAE LQDKMKARTNYEKAI SQGHQAFLLLEGDSSSRDVFSCNVGNLQPGSKAAVTLKYVQELPLEADGA
LRFVLP AVLNPRYQFSGSSKDSCLNVKTPIVPVEDLPYTL SMVATIDSQHGIEKVQSNCP LSPTEYLGED
K TSAQVSLAAGHKFDRDVELLIYYNEVHTPSV VLEMGPMPNMPGHLMGDPSAMVSFY PNIPEDQPSNTCG
EFIFLMDRSGSMQSPMSSQDTSQLRIQA AKETLILLLKSLPIGCYFN IYGFSSYEACFPESVKYQQT
M EEALGRVKLMQADLGGTEILAPLQNIYRGPSIPGHPLQLFVFTDGEVTDTF SVIKEVRINRQKHRCFSFG
IGEGTSTSLIKGIARASGGTSEFITGKDRMQSKALRTLKRSLQPVEDVSLSWHLPPGLSAKMLSPEQTV
IFRGQRLISYAQLTGRMPAAETTGEVCLKYTLQGKTFEDKVTFPLQPKPDVNLTIHRLAAKSL LQTKDMG
LRETPASDKKDALNLSLESGVISSFTAFIAINKELNKPVQGPLAHRDVPRPILLGASAPLIKCSGFRK
ALHSDRPPSASQPRGELM CYKAKTFQMDDYSLCGLISHKDQHSPGFGENHLVQLIYHQ NANGSWDLNEDL
AKILGMSLEEIMAAQPAELVDSSGWATILAVIWLH SNGKDLKCEWELLERKAVAWMRAHAGSTMP SVVKA
AITFLKSSVDP AIFAF

TRTRPLEQKLI SEEDLAANDILDYKDDDDKV

Chromatograms: https://cdn.origene.com/chromatograms/mk6048_h07.zip

Restriction Sites: SgfI-MluI

Reconstitution Method:

1. Centrifuge at 5,000xg for 5min.
2. Carefully open the tube and add 100ul of sterile water to dissolve the DNA.
3. Close the tube and incubate for 10 minutes at room temperature.
4. Briefly vortex the tube and then do a quick spin (less than 5000xg) to concentrate the liquid at the bottom.
5. Store the suspended plasmid at -20°C. The DNA is stable for at least one year from date of shipping when stored at -20°C.

RefSeq: [NM_014622.4](#), [NP_055437.2](#)

RefSeq Size: 3438 bp

RefSeq ORF: 2361 bp

Locus ID: 4013

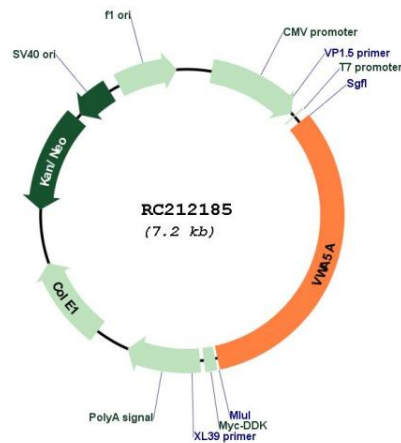
UniProt ID: [O00534](#)

Cytogenetics: 11q24.2

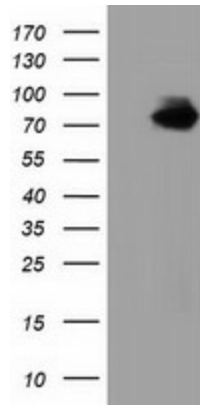
MW: 86.3 kDa

Gene Summary: May play a role in tumorigenesis as a tumor suppressor. Altered expression of this protein and disruption of the molecular pathway it is involved in, may contribute directly to or modify tumorigenesis.[UniProtKB/Swiss-Prot Function]

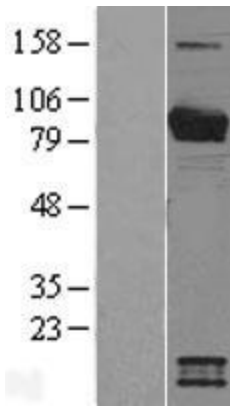
Product images:



Circular map for RC212185



HEK293T cells were transfected with the pCMV6-ENTRY control (Cat# [PS100001], Left lane) or pCMV6-ENTRY VWA5A (Cat# RC212185, Right lane) cDNA for 48 hrs and lysed. Equivalent amounts of cell lysates (5 ug per lane) were separated by SDS-PAGE and immunoblotted with anti-VWA5A(Cat# [TA501569]). Positive lysates [LY402354] (100ug) and [LC402354] (20ug) can be purchased separately from OriGene.



Western blot validation of overexpression lysate (Cat# [LY427178]) using anti-DDK antibody (Cat# [TA50011-100]). Left: Cell lysates from untransfected HEK293T cells; Right: Cell lysates from HEK293T cells transfected with [RC226168] using transfection reagent MegaTran 2.0 (Cat# [TT210002]).



Coomassie blue staining of purified VWA5A protein (Cat# [TP312185]). The protein was produced from HEK293T cells transfected with VWA5A cDNA clone (Cat# RC212185) using MegaTran 2.0 (Cat# [TT210002]).