

## Product datasheet for **RC212173**

### **VANGL2 (NM\_020335) Human Tagged ORF Clone**

#### **Product data:**

Product Type:	Expression Plasmids
Product Name:	VANGL2 (NM_020335) Human Tagged ORF Clone
Tag:	Myc-DDK
Symbol:	VANGL2
Synonyms:	LPP1; LTAP; STB1; STBM; STBM1
Mammalian Cell Selection:	Neomycin
Vector:	pCMV6-Entry (PS100001)
E. coli Selection:	Kanamycin (25 ug/mL)



[View online »](#)

**ORF Nucleotide Sequence:**

>RC212173 representing NM\_020335  
 Red=Cloning site Blue=ORF Green=Tags(s)

TTTTGTAATACGACTCACTATAGGGCGGCCGGGAATTCGTCGACTGGATCCGGTACCGAGGAGATCTGCC  
 GCC**CGGATCGCC**

ATGGACACCGAGTCCCAGTACTCGGGCTATTCTACAAGTCGGGCCACTCCCGCAGCTCCCGCAAGCACA  
 GGGACCGCCGGGACCGACACCGCTTAAGAGTCGAGATGGGGGCCGAGGGGACAAGTCGGTGACAATCCA  
 GGCTCCCGGGGAGCCCTGCTGGACAATGAGTCCACACGAGGGGATGAGCGGGATGACAACCTGGGGGAA  
 ACGACGACAGTAGTAACGGGCACCTCAGAGCACAGCATCTCCCATGATGACCTCACACGCATCGCCAAGG  
 ACATGGAGGACAGTGTCCCTCTGGACTGCTCCCGTCACCTGGGTGTGGCAGCGGGGGCCACCCTGGCACT  
 GCTGTCTTTCTCACGCCTCTGGCCTTCTGCTGCTGCCCCACTGCTGTGGCGGAGGAGCTGGAGCCT  
 TGCGGGACGGCCTGCGAGGGCCTTTCATCTCTGTCGCCTTCAAGCTGCTCATCTGCTACTGGGCAGCT  
 GGGCTCTGTTCTCCGCCGGCCAAAGCCTCGCTGCCCGCGTCTTTGTGCTGCGTGCCCTGTTATGGT  
 GCTGGTTTTCTGCTCGTGGTCTCTACTGGCTTCTATGGTGTGCGCATCTGGATGCTCGGGAGCGC  
 AGCTACAGGGCGTGGTGCAGTTCGCCGTGCTGCTGGTGGACGCCCTTCTTTTCTGCACTACCTGGCCG  
 TGGTCTGCTGGAGCTGCGCCAGCTCCAGCCTCAGTTCACGCTCAAGGTCGTGCGCTCCACCGACGGCGC  
 CAGCCGCTTCTACAACGTTGGCCATCTCAGCATCCAGCGCGTGGCAGTGTGGATCCTGGAGAAGTATTAC  
 CATGACTTCCCTGTCTACAACCTGCCCTCTCAACCTGCCCAAGTCCGTCTGGCCAAGAAAGTGTCTG  
 GCTTCAAGGTGTATTCCCTCGGAGAGGAAAACAGCACCAACAACCTCCACTGGCCAGTCTCGGGCTGTGAT  
 TGCAGCGGCAGCTCGGAGGCGGGACAACAGTACAATGAGTACTACTATGAGGAGGCTGAGCATGAGCGA  
 AGGTGCGCAAGAGGAGGGCCAGGCTTGTAGTGGCGGTGGAGGAGCCTTCACTCACATTAAGCGGCTGC  
 AGGAAGAGGAGCAGAAAAACCCAGGGAGGTGATGGACCCCGGGAGGCAGCCCAAGCATTCTTTGCATC  
 CATGGCCCGTGCCATGCAGAAGTACCTTCGGACCACCAAGCAGCAGCCCTACCACACCATGGAGAGCATC  
 CTGCAACACCTTGAATTCTGCATCACGCATGACATGACGCCAAGGCCTTCTGGAGCGATACTGGCGG  
 CTGGACCTACCATCCAGTACCACAAGGAACGCTGGCTGGCCAAACAGTGGACATTGGTGAGCGAGGAGCC  
 GGTGACCAACGGCCTCAAGGATGGCATCGTTTTCTCTTAAAACGCCAGGACTTCAGCCTGGTGGTCAGC  
 ACCAAGAAGTCCATTCTTCAAACCTCTCCGAGGAATTTGTGGATCCCAAGTCACACAAGTTTGTATGA  
 GGCTGCAGTCTGAGACCTCAGTG

**ACGCGT**ACGCGGCCGCTCGAGCAGAAACTCATCTCAGAAGAGGATCTGGCAGCAAATGATATCCTGGATT  
 ACAAGGATGACGACGATAAGGTTTAA

**Protein Sequence:**

>RC212173 representing NM\_020335  
 Red=Cloning site Green=Tags(s)

MDTESQYSYSGYSYKSGHSRSRKHRDRRDRHRSKSRDGGRGDKSVTIQAPGEPLLDNESTRGDERDDNWGE  
 TTTVVVTGTSEHSISHDDLTRIAKDMEDSVPLDCSRHLGVAAGATLALLSFLTPLAFLLLPILLWREELEP  
 CGTACEGLFISVAFKLLILLGSWALFFRRPKASLPRVFVLRALLMVLVFLLVVSYWLFYGVRIILDARER  
 SYQGQVVFVAVSLVDALLFVHYLAVVLELRQLQPQFTLKVVRSTDGASRFYNVGHLSIQRVAVWILEKYY  
 HDFPVYNPALLNLPKSVLAKKVSFGKVSLSLGEENSTNNSTGQSRVIAAAAARRRDNHNEYEEAEHER  
 RVRKRRARLVVAVVEAFTHIKRLQEEEQKNPREVMDPREAAQAIFASMARAMQKYLRTTKQOPYHTMESI  
 LQHLEFCITHDMPKAFLELYLAAGPTIQYHKERWLAKQWTLVSEEPVTNGLKDGIVFLLKRQDFSLVVS  
 TKKVPFFKLSEEFVDPKSHKFMRLQSETSV

**TR**TRPLEQKLISEEDLAANDILDYKDDDDKV

**Chromatograms:**

[https://cdn.origene.com/chromatograms/mk6501\\_d01.zip](https://cdn.origene.com/chromatograms/mk6501_d01.zip)

**Restriction Sites:**

Sgfl-MluI

**Cloning Scheme:**


**ACCN:** NM\_020335

**ORF Size:** 1563 bp

**OTI Disclaimer:** The molecular sequence of this clone aligns with the gene accession number as a point of reference only. However, individual transcript sequences of the same gene can differ through naturally occurring variations (e.g. polymorphisms), each with its own valid existence. This clone is substantially in agreement with the reference, but a complete review of all prevailing variants is recommended prior to use. [More info](#)

**OTI Annotation:** This clone was engineered to express the complete ORF with an expression tag. Expression varies depending on the nature of the gene.

**Components:** The ORF clone is ion-exchange column purified and shipped in a 2D barcoded Matrix tube containing 10ug of transfection-ready, dried plasmid DNA (reconstitute with 100 ul of water).

- Reconstitution Method:**
1. Centrifuge at 5,000xg for 5min.
  2. Carefully open the tube and add 100ul of sterile water to dissolve the DNA.
  3. Close the tube and incubate for 10 minutes at room temperature.
  4. Briefly vortex the tube and then do a quick spin (less than 5000xg) to concentrate the liquid at the bottom.
  5. Store the suspended plasmid at -20°C. The DNA is stable for at least one year from date of shipping when stored at -20°C.

**Note:** Plasmids are not sterile. For experiments where strict sterility is required, filtration with 0.22um filter is required.

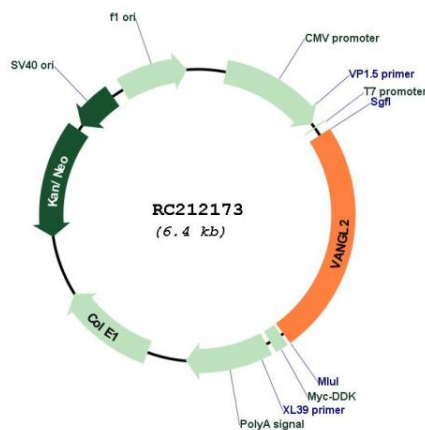
**RefSeq:** [NM\\_020335.3](#)

**RefSeq Size:** 5415 bp

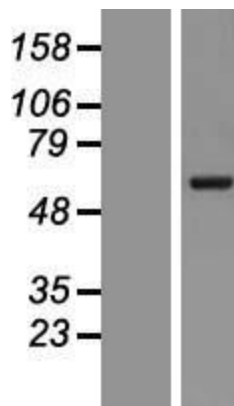
**RefSeq ORF:** 1566 bp

**Locus ID:** 57216

**UniProt ID:** [Q9ULK5](#)  
**Cytogenetics:** 1q23.2  
**Protein Families:** Transmembrane  
**Protein Pathways:** Wnt signaling pathway  
**MW:** 59.5 kDa  
**Gene Summary:** The protein encoded by this gene is a membrane protein involved in the regulation of planar cell polarity, especially in the stereociliary bundles of the cochlea. The encoded protein transmits directional signals to individual cells or groups of cells in epithelial sheets. This protein is also involved in the development of the neural plate. [provided by RefSeq, Sep 2011]

**Product images:**


Circular map for RC212173



Western blot validation of overexpression lysate (Cat# [LY412565]) using anti-DDK antibody (Cat# [TA50011-100]). Left: Cell lysates from untransfected HEK293T cells; Right: Cell lysates from HEK293T cells transfected with RC212173 using transfection reagent MegaTran 2.0 (Cat# [TT210002]).