

Product datasheet for **RC212172**

PCDHA3 (NM_018906) Human Tagged ORF Clone

Product data:

Product Type:	Expression Plasmids
Product Name:	PCDHA3 (NM_018906) Human Tagged ORF Clone
Tag:	Myc-DDK
Symbol:	PCDHA3
Synonyms:	PCDH-ALPHA3
Mammalian Cell Selection:	Neomycin
Vector:	pCMV6-Entry (PS100001)
E. coli Selection:	Kanamycin (25 ug/mL)



[View online »](#)

ORF Nucleotide
Sequence:

>RC212172 representing NM_018906
 Red=Cloning site Blue=ORF Green=Tags(s)

TTTTGTAATACGACTCACTATAGGGCGGCCGGAATTCGTCGACTGGATCCGGTACCGAGGAGATCTGCC
 GCC**CGGATCGCC**

ATGTTGTTCTCCTGGCGAGAAGATCCTGGAGCCAGTGCCTGCTGCTTTCTTTCTGCTCCTCGCAGCCT
 CGGAGGTGGGAGCGGCCAGCTCCTACTCTCCGCTCTGAGGAGGCCAAGCATGGCACCTTCGTGGGCCG
 CATCGCGCAGGACCTGGGGCTGGAGCTGGCGGAGCTGGTCCGCGCCTGTTCCGGGTGGCGTCCAAAAGA
 CACGGGGACCTTCTGGAGGTAATCTGCAGAATGGCATTGTTGTTGTGAATTCTCGGATAGACCGGAGG
 AACTGTGCGGGCGGAGCGCGGAGTGCAGCATCCACCTGGAGGTGATCGTGGACAGGCCGCTGCAGGTTTT
 CCATGTGGAGGTGAAGTGAAGGACATTAATGACAACGCGCCAGTTTTTCCAATGGCTGTAAAGAATCTG
 TTTATTTCCGAATCCCGACAGCCTGGCTCTCGTTTTTCGCTAGAGGGCGCATCAGATGCAGATATCGGAA
 CAAATTCGTTGTTGACTTACAGTCTTGATTCCACTGAATATTTTACCTTGGACGTTAAAAGAAATGATGA
 GAAATTAATCCCTTGGACTCGTGTGAAAAAATTTAAATCGAGAGGACACTCCTAAGCATTATTTA
 CTAAATACAGCAATTGATGGTGGAAACAGAGCTCACTGGCAGCACTCACTAAAGATCACTGTTTTAG
 ATGTAACGACAACGCCACGCTTTGAGAGGACGATCTATAAAGTCAGATTACTCGAAAATGCACCAAA
 TGGTACCCTAGTGGTACCGTTAACGCCACCGATTTGGATGAAGGAGTAAATAAGGATATCGCGTATTCT
 TTCAATACGGACATGTCAGCAGATATTCTGTCAAAATTCATTTAGATCCAGTCAATGGACAAATCAGTG
 TAAAGGTAACATAGATTTTCGAGGAAAGTAAGTCATATGAAATCCAGGTAGAAGCCACGGATAAAGGAAA
 TCCCCAATGTCAGATCACTGCACAGTTCTACTCGAAATGTGGACATCAATGATAATGTACCTGAGTTA
 GTTATTTCAATCACTATCTTTACCTGTATTAGAAGACTCTCCACTAGCACAGTCAATCGCTCTGATCAGCG
 TGTCCGACCGGACTCAGGAGTCAATGGACAGTCACTGCTCGTGCAGCCCCACGTCCTTCAAGT
 GGTGTCCACCTTCAAGAATTACTACTATTGGTGTGGACAGCCCTCTGGACCCGAGAGCGTGTGCGCC
 TATGAGCTGGTGGTACTGCTCGGGACGGGGCTCGCCTTCACTGTGGCCACGGCCAGCGTGTCCGTGG
 AGGTGGCCGACGTGAACGACAATGCGCCGGCATTCTCGCAGTCCGAGTACACGGTGTTCGTGAAGGAGAA
 CAACCCGCGGGCTGCCACATCTTACGGTGTCTGCGCGGACGCGGACGCGCAGGAGAACGCCCTGGTG
 TCCTACTCGTGGTGAACGGCGGTGGGGAGCGCGCTGTGAGCTACGTGTGCGGTACACGCGGAGA
 GCGGAAGGTGTACGCGTGCAGCCGCTGGACCAGGAGCTAGAGCTGCTGCAGTTCAGGTGAGTGC
 GCGCGATGCGGGCTGCCCTCTGGCAGCAACGTGACGCTGCAGGTGTTGCTGCTGGACGAGAACGAC
 AACGCGCCGGCACTGCTGATGCCTCGGGTGGTGGCATCGGTGGCGCAGTGAAGCAGCTGGTCCCGGT
 CAGTGGGTGCGGGCCACGTGGTAGCAAGGTGCGCGCAGTGGATGCAGACTCAGGCTACAACGCGTGGCT
 TTCGATGAGCTGCAGCCTGGGACCGGGCTGCGCGCATCCCGTTTTGCGGTGGGGCTGTACACGGGAGAG
 ATCAGCACGACCCGTGCCCTGGACGAGGTGGACGCCCCGCGCATCGCCTACTGGTGTGGTGAAGGACC
 ACGGTGAACCTCATTGACCGCCACGGCACTGTGCTGGTGTGCTGGTGGAGAGTGGCCAGGCACCCAA
 GGCCTCGTCCCAGGCGTCCGCTGGCGCCACGGGCCGGAAGCTGCACTGGTGGATGTCAACGTGTACTTG
 ATCGTCCCATCTGCGCGGTGTCCAGTCTGTTGGTGTCACTGCTGCTATATACTGCTCTGCGGTGCT
 CCGCGCCCAACCGAAGGCGACTGTGGCCGGCAAGCCACGCTGGTGTCTCCAGCGGTGGGGAG
 CTGGTCATACTCGCAGCAGAGGACAGAGGGTGTGCTCTGGAGAGGGTTCCTCAAGCCGACCTCATG
 GCTTTTAGCCCTAGCCTTCTCCTGTCCAATTAGCCGGGATAGAGAGGAGAAACAGGATGTGGAGTTG
 ATCTCTCAGCAAACACGACAGCCAAACCTGACTGGCGTACTCTGCCTCCCTGAGAGCAGGCATGCA
 CAGCTCTGTGCACCTAGAGGAGGCTGGCATTCTACGGGCTGGTCCAGGAGGCTGATCAGCAGTGGCCA
 ACAGTATCCAGTGAACACCAGAACCAGAGGAGGAGAGTGTCCCTCCAGTCCGTTGCGGGTGTCAACA
 GCAACAGCTGGACCTTTAAATACGGACAGGCAACCCAAACAATCCGGTCCCGGTGAGTTGCCGACAA
 ATTATTATCCAGGATCTCTGCAATCATCTCCATCCGGCAGGAGCCTACTAACAGCCAAATTGACAAA
 AGTGACTTCATAACCTTCGGCAAAAAGGAGGAGACCAAGAAAAAGAAAAAGAAAGGGTAACAAGA
 CCCAGGAGAAAAAGAGAAAGGGAACAGCAGCACTGACAACAGTGACCAG

AG**CGGACCG**ACGCGTACGCGGCCGCTCGAGCAGAACTCATCTCAGAAGAGGATCTGGCAGCAAATGATATCC
 TGGATTACAAGGATGACGACGATAAGGTTTAA

Protein Sequence: >RC212172 representing NM_018906
 Red=Cloning site Green=Tags(s)

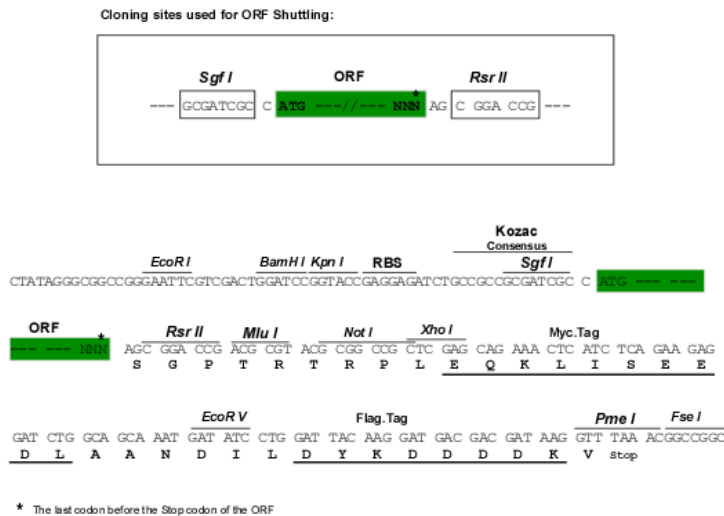
MLFSWREDPGAQCLLLSLLLLAASEVSGQLHYSVSEEAKHGTFVGRIAQDLGLELAELVPRLFRVASKR
 HGDLLLEVLNQLNGILFVNSRIDREELCGRSAECSIHLEVI VDRPLQVFHVEVEVKDINDNAPVFPMAVKNL
 FISESRQPGSRFSLEGASDADIGTNSLLTYSLDSTEYFTLDVKNRDEEIKSLGLVLKKNLNREDTPKHYL
 LITAIIDGGKPELTGTTQLKITVLDVNDNAPAFERTIYKVRLLLENAPNGTLVVTVNATDLDEGVNKDIAYS
 FNTDMSADILSKFHLDPVNGQISVKGNI DFEESKSYEIQVEATDKGNPPMSDHCTVLEIVDINDNVPEL
 VIQSLSLPVLEDSPLSTVIALISVSDRDSGVNGQVTCSLTPHVPFKLVSTFKNYSYSLVLDSPLDRESVSA
 YELVVTARDGGSPSLWATASVSVEVADVNDNAPAFSQSEYTVFVKENPPGCHIFTVSARDADAQENALV
 SYSLVERRVGERALSSYVSVHAESGKYYALQPLDHEEELLLQFQVSARDAGVPPPLGSNVTLQVFLDEND
 NAPALLMPRVGGIGGAVSELVPRSVGAGHVVAKVRADVADSGYNWL SYELQP GTGGARIPFRVGLYTGE
 ISTTRALDEV DAPRHLLVLVKDHGEP SLTATATVLSLVE SGQAPKASSQASAGATGPEAALVDNVYL
 IVAICAVSLLVLTLLLYTALRCSAPPTGDCGPGKPTLVCSAVGWSYSQQRQQRVCSGGLPKTDLM
 AFSPSPPCPI SRDREEKQD VDVLSAKPRQPNPDWRYSASLRAGMHSSVHLEEAGILRAGPGGPDQQWP
 TVSSATPEPEAGEVSPPVGAGVNSNSWTFKYGPNPKQSGPGELPKDFIIPGSPAIISIRQPTNSQIDK
 SDFITFGKKEETKKKKKKKKGNKTQEKKEKGNSTTDNSDQ

SGPTRRRL**EQKLISEEDLAANDILDYKDDDDK**V

Chromatograms: https://cdn.origene.com/chromatograms/mk8009_h10.zip

Restriction Sites: SgfI-RsrII

Cloning Scheme:

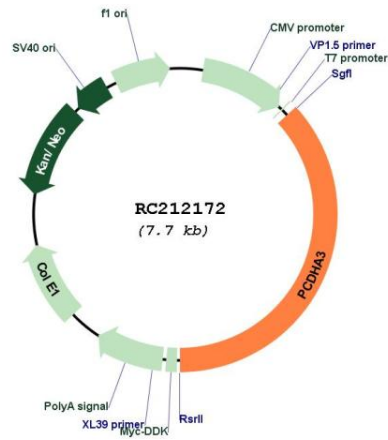


ACCN: NM_018906

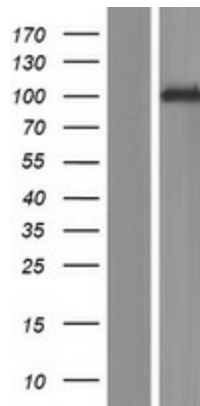
ORF Size: 2850 bp

OTI Disclaimer:	The molecular sequence of this clone aligns with the gene accession number as a point of reference only. However, individual transcript sequences of the same gene can differ through naturally occurring variations (e.g. polymorphisms), each with its own valid existence. This clone is substantially in agreement with the reference, but a complete review of all prevailing variants is recommended prior to use. More info
OTI Annotation:	This clone was engineered to express the complete ORF with an expression tag. Expression varies depending on the nature of the gene.
Components:	The ORF clone is ion-exchange column purified and shipped in a 2D barcoded Matrix tube containing 10ug of transfection-ready, dried plasmid DNA (reconstitute with 100 ul of water).
Reconstitution Method:	<ol style="list-style-type: none">1. Centrifuge at 5,000xg for 5min.2. Carefully open the tube and add 100ul of sterile water to dissolve the DNA.3. Close the tube and incubate for 10 minutes at room temperature.4. Briefly vortex the tube and then do a quick spin (less than 5000xg) to concentrate the liquid at the bottom.5. Store the suspended plasmid at -20°C. The DNA is stable for at least one year from date of shipping when stored at -20°C.
RefSeq:	NM_018906.3
RefSeq Size:	5260 bp
RefSeq ORF:	2853 bp
Locus ID:	56145
UniProt ID:	Q9Y5H8
Cytogenetics:	5q31.3
Protein Families:	Transmembrane
MW:	99.3 kDa
Gene Summary:	This gene is a member of the protocadherin alpha gene cluster, one of three related gene clusters tandemly linked on chromosome five that demonstrate an unusual genomic organization similar to that of B-cell and T-cell receptor gene clusters. The alpha gene cluster is composed of 15 cadherin superfamily genes related to the mouse CNR genes and consists of 13 highly similar and 2 more distantly related coding sequences. The tandem array of 15 N-terminal exons, or variable exons, are followed by downstream C-terminal exons, or constant exons, which are shared by all genes in the cluster. The large, uninterrupted N-terminal exons each encode six cadherin ectodomains while the C-terminal exons encode the cytoplasmic domain. These neural cadherin-like cell adhesion proteins are integral plasma membrane proteins that most likely play a critical role in the establishment and function of specific cell-cell connections in the brain. Alternative splicing has been observed and additional variants have been suggested but their full-length nature has yet to be determined. [provided by RefSeq, Jul 2008]

Product images:



Circular map for RC212172



Western blot validation of overexpression lysate (Cat# [LY412918]) using anti-DDK antibody (Cat# [TA50011-100]). Left: Cell lysates from untransfected HEK293T cells; Right: Cell lysates from HEK293T cells transfected with RC212172 using transfection reagent MegaTran 2.0 (Cat# [TT210002]).