

Product datasheet for **RC212170**

CXorf30 (NM_001098843) Human Tagged ORF Clone

Product data:

Product Type:	Expression Plasmids
Product Name:	CXorf30 (NM_001098843) Human Tagged ORF Clone
Tag:	Myc-DDK
Symbol:	CXorf30
Synonyms:	RP11-87M18.1
Mammalian Cell Selection:	Neomycin
Vector:	pCMV6-Entry (PS100001)
E. coli Selection:	Kanamycin (25 ug/mL)



[View online »](#)

ORF Nucleotide
Sequence:

>RC212170 representing NM_001098843
Red=Cloning site Blue=ORF Green=Tags(s)

TTTTGTAATACGACTCACTATAGGGCGGCCGGGAATTCGTCGACTGGATCCGGTACCGAGGAGATCTGCC
GCCGCGATCGCC

ATGGAATGACATGTATTGCTCTGGACAGCACTTGCATTGAAATACCTCTCTCTAATCCAAAAGATAGAG
GTCTTCACCTAGAGGTGCAGTTAACGAGTGTGCCCTTAATGGGGATAATGAAATTATCCTGAGTCCACT
ACAGTGCACCAAATATATTGTATGGTATTCTCCAGCAACTACAGGCTACAGCGATGAAAGCATTATTTTT
CAGCCTGAAATGGCTGAAGAGTTCTGGTATTTACTGAAGTTAACTATTGAATTACCAAAACCAACCACAA
TGCCAGAAATACAGTGCACCTTGGCAAGCATGCTACTCAGATCATTCTTTAGTTAATTGTACGCATGA
AACCTTAAATGCAAGTAACAAACAGTAATCCTGAAAATTTTGCCTGGATATTAACAGAAAATCACAA
CTGATCATATCTCTCACTCCACCACAGAATTACCTGTTCTCTTTATCCTTCTGCACTTGAAGAGCTG
ATCATCAAGCTTGCATCAACTTCTACTGTACTCAGTTTACAGAATGGAAATCTACTTATCTGGAGTAGG
ACTATTTCCCGCCTCTAGACACGGAAAGAATAACCACACGCATTGGTCTTCAGTCAACTATTGTTATA
CCTTTCAAAAATCCCACAATGGAAGATGTCCTCATTGATATAATACTGACAAGTGTGGAACATCCCAGGA
ATCTTGTGATGGATCATTGCTGGGATAGCTTATCTATGAGAGTTCTGCCTTCAGATTTAGTTCTCCGAG
TGAAATACAAGGAATTGCACTGCCTCCTAAAGGAAATATAGATATCTCATTGTTATTTATACCTCAAATT
ATGAAATTACACAAAACAATGGTTATTATTGAGATGACGAAAGCAAAATGGAAAATATTGGCCTATTGACA
ATTTTGATGAGTTGGATATAAAATTTAAAAGTATTGTGGGAATCGACAGCGAAGAAATCCAAGCAATACA
CTGGATATACCCTATTGTTGGACTCCACAAGCACCACCTCTAAATCTCCCCAGTTGCATACAATGT
CAGTCCAGGAAGCGGGCAGAAGAGAAGGTAGAAATCATACTGAATGCTGGTTTTTTTCGGATTTAGCTTA
CTCCAGATCTGACAGAAGTTTTAGTGATTCCAAAAAGAAATTCACATAATTTTTGTGAGGATCCCAATGA
AATTCCTAAAATACATGAATTCGAGTATGAAATTCATTTGAATCTGAAGCTATGAAGTCTAAGTTGGAA
TCTGTGTAGCTTTATATGATTGAAAAATCTTATGATATTATGGCTAAAAGGATAACATTTATCTTCA
ATCTGGTATTCACACAAAGAAACCATTAAGGTCTCACATAACACTGAAAATAGAGTGCCTAACAGAAGG
GATCTGGAAGTTTCCATAATGTTGATCGCTACTGAACCTGATACGGATGCTGTCATTGACATTGAAGGA
GTTGGTTTATTTAAGGAATCTGTTTTTGAACCTTAGGCTGAAAAGTCAGACAAGAAATCCTGAGCCGTTCA
CCGCACACTTCTACCTGGCAGCGATCTGGAGTTTTTTGTAACCTCAGGCTGGAGAATCTCTCCTTT
TAACACAAACGGAATCTCATCACTGTAGGATTTAAACCTAAAATGTACTGTAGGAAATATAAAGCAACA
TTAGTAATACAGACAGAAGAAATGTACTGGAAGTATGAGATCAATGGATTAACCTCAACTACCGTGCCAC
CAAAAATGCAAAAGCCAAAATGATGCTACTCAAGACACATGACAACATGCCAGTCCGTCACATAA
TTTTGTCCGTGAAAATACTAAACTCATAAGAACAGGGGTGCTTCCACCATCAAGGGTGCTCTTTGGTG
AAGAATCAA

ACGCGTACGCGGCCGCTCGAGCAGAAACTCATCTCAGAAGAGGATCTGGCAGCAATGATATCCTGGATT
ACAAGGATGACGACGATAAGGTTTAA

Protein Sequence: >RC212170 representing NM_001098843
Red=Cloning site Green=Tags(s)

```
MEMTCIALDSTCIEIPLSNPKDRGLHLEVQLTSAALNGDNEIILSPLQCTKYIVWYSPATTGYSDESIIIF
QPEMAEEFWYLLKLTIELPKPTTMEIQCDLGHVTVQIIPLVNCTHETLKLQVTNSNPENFVLDINRKSQ
LIISPHSTTELPVLFYPSALGRADHQACINFYCTQFTWKFYLSGVGLFPQPLDTERITTRIGLQSTIVI
PFKNPTMEDVLDIILTSVEHPRNLVMDHCWDSFIYESSAFRFSPPSEIQGIALPPKGNIDISLLFIPQI
MKLHKTMVIIEMTKANGKYWPIDNFDELDIKFKSIVGIDSEEIQAIHWIYPIVGLPQAPPPKSPVVIQC
QSRKRAEEKVEIILNAGFFGFSLTPDLTEVLVIPKRNSHNFCEPNEIPKIHFEFYEIQFESEAMSKLE
SCVALYMIKSYDIMAKRITFIFNLVFTPKPLRSHITLKIIECVTEGIWKFPIMLIATEPDTDAVIDIEG
VGLFKESVFEFLRLKSQTRNPEPFTAHFLPGSDLEFFVKPQAGELLPFNTNGTLITVGFKPKMYCRKYKAT
LVIQTEEMYWKYEINGLTPTTVPKNAKAKIDATHKTHDNMPVRPHNFVRENTKLIRTGVSSTIKGAPLV
KNQ
```

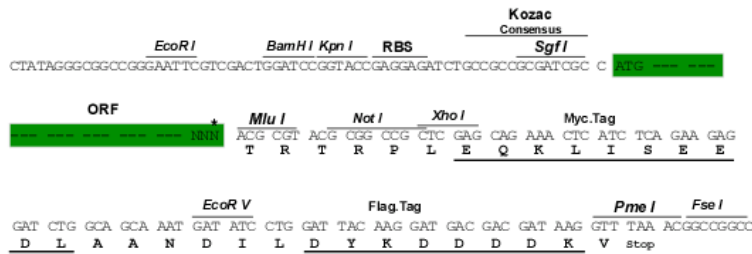
TRTRPLEQKLISEEDLAANDILDYKDDDDKV

Chromatograms: https://cdn.origene.com/chromatograms/mk8026_b01.zip

Restriction Sites: SgfI-MluI

Cloning Scheme:

Cloning sites used for ORF Shuttling:



* The last codon before the Stop codon of the ORF

ACCN: NM_001098843

ORF Size: 1899 bp

OTI Disclaimer: The molecular sequence of this clone aligns with the gene accession number as a point of reference only. However, individual transcript sequences of the same gene can differ through naturally occurring variations (e.g. polymorphisms), each with its own valid existence. This clone is substantially in agreement with the reference, but a complete review of all prevailing variants is recommended prior to use. [More info](#)

OTI Annotation: This clone was engineered to express the complete ORF with an expression tag. Expression varies depending on the nature of the gene.

Components: The ORF clone is ion-exchange column purified and shipped in a 2D barcoded Matrix tube containing 10ug of transfection-ready, dried plasmid DNA (reconstitute with 100 ul of water).

Reconstitution Method:

1. Centrifuge at 5,000xg for 5min.
2. Carefully open the tube and add 100ul of sterile water to dissolve the DNA.
3. Close the tube and incubate for 10 minutes at room temperature.
4. Briefly vortex the tube and then do a quick spin (less than 5000xg) to concentrate the liquid at the bottom.
5. Store the suspended plasmid at -20°C. The DNA is stable for at least one year from date of shipping when stored at -20°C.

Note: Plasmids are not sterile. For experiments where strict sterility is required, filtration with 0.22um filter is required.

RefSeq: [NM_001098843.4](#), [NP_001092313.2](#)

RefSeq Size: 2665 bp

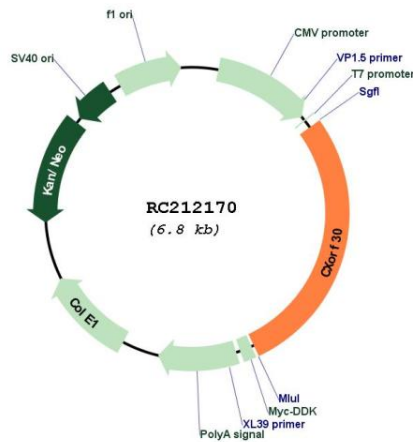
RefSeq ORF: 1902 bp

Locus ID: 645090

Cytogenetics: Xp21.1

MW: 71.8 kDa

Product images:



Circular map for RC212170