

## Product datasheet for RC212160

### RRAGD (NM\_021244) Human Tagged ORF Clone

#### Product data:

Product Type:	Expression Plasmids
Product Name:	RRAGD (NM_021244) Human Tagged ORF Clone
Tag:	Myc-DDK
Symbol:	RRAGD
Synonyms:	bA11D8.2.1; RAGD
Mammalian Cell Selection:	Neomycin
Vector:	pCMV6-Entry (PS100001)
E. coli Selection:	Kanamycin (25 ug/mL)
ORF Nucleotide Sequence:	>RC212160 representing NM_021244 Red=Cloning site Blue=ORF Green=Tags(s)

TTTTGTAATACGACTCACTATAGGGCGGCCGGAATTCGTCGACTGGATCCGGTACCGAGGAGATCTGCC  
GCC**CGATCGCC**

ATGAGCCAGGTGCTGGGGAAGCCGACGCCAGGACGAGGACGACGCGGAGGAGGAGGAGGAGGATG  
AGCTGGTGGGCTAGCGGACTACGGAGACGGGCCGACTCCTCCGACGCCGATCCGGACAGCGGCACAGA  
GGAGGGAGTTCTGGACTTCAGTGACCCCTTCAGCACTGAAGTGAAGCCGAGAATCCTGCTCATGGGCCTG  
AGGAGAAGCGGCAAGTCGCTATTTCAGAAAGTTGCTTTTCAAAAATGTCTCCCAACGAACTCTGTTCT  
TGGAGAGCACTAATAAGATATGCCGGGAAGATGTTTCCAACAGCTCCTTTGTCAATTTTCAGATTTGGGA  
CTTCCCAGGACAGATTGACTTTTTTACCTTACATTTGACTATGAGATGATCTTCCGGGGAACAGGAGCA  
CTGATATTTGTCATTGACTCACAGGATGATTACATGGAAGCCCTGGCCAGGCTCCACCTCACGGTGACCA  
GGGCTACAAAGTGAATACTGACATCAACTTCGAGGTGTTTATTCATAAAGTGGATGGTCTGTCAGATGA  
CCACAAAATTGAAACCCAAAGAGATATTCACCAGAGGGCAAACGATGACCTTGCAGATGCTGGATTAGAA  
AAAATTCACCTCAGCTTTTATCTGACAAGCATATGATCATTCAATATTTGAAGCTTTTAGCAAAGTTG  
TTCAGAACTGATTCCACAACCTCCAACCTGGAGAATTTGCTGAACATCTTTATCTCAAATTTCTGGAAT  
TGAAAAGGCATTTCTATTTGATGTGGTCAGTAAATTTATATTGCAACTGATAGTACTCCGGTGGATATG  
CAAACCTATGAGCTCTGCTGTGATATGATAGATGTGGTTATTGACATCTTTGTATTTATGGTCTCAAAG  
AAGATGGAGCAGGAACCCCTATGACAAGGAATCCACAGCCATCATAAAGCTTAATAATACAACCGTGCT  
TTATTTAAAAGAGGTGACAAAGTTCTCGCTCTCGTTTGTCTTGTGAGAGGAAAGCTTTGAAAGAAAA  
GGGCTAATTGACTATAATTTTTCATTGCTTCCGGAAGGCCATTCATGAAGTTTTTGAGGTGAGAATGAAAG  
TAGTAAAATCTCGAAAGTTTCAGAAATCGGCTGCAGAAGAAAAAGAGAGCCACCCCTAATGGGACCCCTAG  
AGTGCTGCTG

**ACGCGT**ACGCGGCCGCTCGAGCAGAAACTCATCTCAGAAGAGGATCTGGCAGCAAATGATATCTGGATT  
ACAAGGATGACGACGATAAGGTTTAA



[View online »](#)

**Protein Sequence:** >RC212160 representing NM\_021244  
Red=Cloning site Green=Tags(s)

MSQVLGKPPQDEDDAEEEEEEDELVGLADYGDGPDSSDADPDSGTEEGVLDFSDPFSTEVKPRILLMGL  
 RRSKGKSSIQKVVFKMSPNETLFLESTNKICREDVSNSSFVNFQIWDFFGQIDFDPTFDYEMIFRGTGA  
 LIFVIDSQDDYMEALARLHLTVTRAYKVNTDINFEVFIHKVDGLSDDHKIETQRDIHQRANDDLADAGLE  
 KIHLSFYLTISIYDHSIFEAFSKVVQKLIPLPTLENLLNIFISNSGIEKAFKLDVVSKIYIATDSTPVDM  
 QTYELCCDMIDVVIDISCIYGLKEDGAGTPYDKESTAIKLNNTTVLYLKEVTKFLALVCFVREESFERK  
 GLIDYNFHCFRKAIHEVFEVRMKVVKSRKVQNRLQKKKRATPNGTTPRVLL

TRTRPLEQKLISEEDLAANDILDYKDDDDKV

**Chromatograms:** [https://cdn.origene.com/chromatograms/mk6487\\_b12.zip](https://cdn.origene.com/chromatograms/mk6487_b12.zip)

**Restriction Sites:** SgfI-MluI

**Cloning Scheme:**



\* The last codon before the Stop codon of the ORF

**ACCN:** NM\_021244

**ORF Size:** 1200 bp

**OTI Disclaimer:** The molecular sequence of this clone aligns with the gene accession number as a point of reference only. However, individual transcript sequences of the same gene can differ through naturally occurring variations (e.g. polymorphisms), each with its own valid existence. This clone is substantially in agreement with the reference, but a complete review of all prevailing variants is recommended prior to use. [More info](#)

**OTI Annotation:** This clone was engineered to express the complete ORF with an expression tag. Expression varies depending on the nature of the gene.

**Components:** The ORF clone is ion-exchange column purified and shipped in a 2D barcoded Matrix tube containing 10ug of transfection-ready, dried plasmid DNA (reconstitute with 100 ul of water).

**Reconstitution Method:**

1. Centrifuge at 5,000xg for 5min.
2. Carefully open the tube and add 100ul of sterile water to dissolve the DNA.
3. Close the tube and incubate for 10 minutes at room temperature.
4. Briefly vortex the tube and then do a quick spin (less than 5000xg) to concentrate the liquid at the bottom.
5. Store the suspended plasmid at -20°C. The DNA is stable for at least one year from date of shipping when stored at -20°C.

**Note:** Plasmids are not sterile. For experiments where strict sterility is required, filtration with 0.22um filter is required.

**RefSeq:** [NM\\_021244.5](#)

**RefSeq Size:** 1453 bp

**RefSeq ORF:** 1203 bp

**Locus ID:** 58528

**UniProt ID:** [Q9NQL2](#)

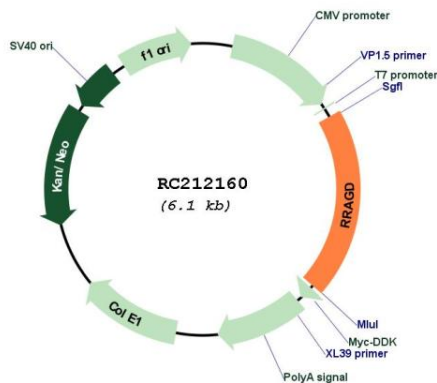
**Cytogenetics:** 6q15

**Domains:** Gtr1\_RagA

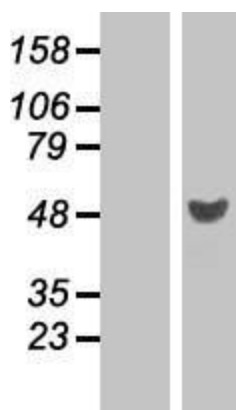
**MW:** 45.4 kDa

**Gene Summary:** RRAGD is a monomeric guanine nucleotide-binding protein, or G protein. By binding GTP or GDP, small G proteins act as molecular switches in numerous cell processes and signaling pathways.[supplied by OMIM, Apr 2004]

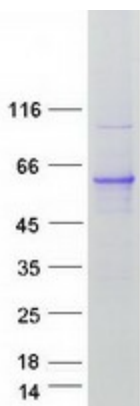
**Product images:**



Circular map for RC212160



Western blot validation of overexpression lysate (Cat# [LY411996]) using anti-DDK antibody (Cat# [TA50011-100]). Left: Cell lysates from untransfected HEK293T cells; Right: Cell lysates from HEK293T cells transfected with RC212160 using transfection reagent MegaTran 2.0 (Cat# [TT210002]).



Coomassie blue staining of purified RRAGD protein (Cat# [TP312160]). The protein was produced from HEK293T cells transfected with RRAGD cDNA clone (Cat# RC212160) using MegaTran 2.0 (Cat# [TT210002]).