

## Product datasheet for **RC212159**

### Ionotropic Glutamate receptor 2 (GRIA2) (NM\_001083620) Human Tagged ORF Clone

#### Product data:

Product Type:	Expression Plasmids
Product Name:	Ionotropic Glutamate receptor 2 (GRIA2) (NM_001083620) Human Tagged ORF Clone
Tag:	Myc-DDK
Symbol:	Ionotropic Glutamate receptor 2
Synonyms:	GluA2; gluR-2; gluR-B; GluR-K2; GLUR2; GLURB; HBGR2; NEDLIB
Mammalian Cell Selection:	Neomycin
Vector:	pCMV6-Entry (PS100001)
E. coli Selection:	Kanamycin (25 ug/mL)



[View online »](#)

**ORF Nucleotide Sequence:**

>RC212159 representing NM\_001083620  
 Red=Cloning site Blue=ORF Green=Tags(s)

TTTTGTAATACGACTCACTATAGGGCGGCCGGGAATTCGTCGACTGGATCCGGTACCGAGGAGATCTGCC  
 GCC**CGGATCGCC**

ATGGTTACAGTTTTCCACTTCGGAGTTCAGACTGACACCCACATCGACAATTTGGAGGTGGCAAACAGCT  
 TCGCAGTCACTAATGCTTTCTGCTCCCAGTTTTCGAGAGGAGTCTATGCTATTTTTGGATTTTATGACAA  
 GAAGTCTGTAAATACCATCACATCATTTTTCGGGAACACTCCACGTCTCCTTCATCACTCCCAGCTTCCCA  
 ACAGATGGCACACATCCATTTGTCATTGAGATGAGACCCGACCTCAAAGGAGCTCTCCTTAGCTTGATTG  
 AATACTATCAATGGGACAAGTTTGCATACCTCTATGACAGTGACAGAGGCTTATCAACACTGCAAGCTGT  
 GCTGGATTCTGCTGCTGAAAAGAAATGGCAAGTACTGCTATCAATGTGGGAAACATTAACAATGACAAG  
 AAAGATGAGATGTACCGATCACTTTTTCAAGATCTGGAGTTAAAAAGGAACGGCGTGAATTCTGGACT  
 GTGAAAGGGATAAAGTAAACGACATTGTAGACCAGTTATTACCATTGGAAAACATGTTAAAGGGTACCA  
 CTACATCATTGCAAATCTGGGATTTACTGATGGAGACCTATTAATAATCCAGTTTGGAGGTGCAAATGTC  
 TCTGGATTTAGATAGTGGACTATGATGATTCGTTGGTATCTAAATTTATAGAAAAGATGGTCAACACTGG  
 AAGAAAAAGAATACCCTGGAGCTCACACAACAACAATTAAGTATACTTCTGCTCTGACCTATGATGCCGT  
 TCAAGTATGACTGAAGCCTTCCGCAACCTAAGGAAGCAAAGAATTGAAATCTCCCGAAGGGGGAATGCA  
 GGAGACTGTCTGGCAAACCCAGCAGTGCCTGGGACAAGGTGTAGAAAAGAAAAGGGCCCTCAAACAGG  
 TTCAGGTTGAAGTCTCTCAGGAAATATAAAGTTTGACCAGAATGGAAAAAGAATAAACTATACAATTA  
 CATCATGGAGCTCAAACATAATGGGCCCGGAAGATTGGCTACTGGAGTGAAGTGGACAAAATGGTTGTT  
 ACCCTTACTGAGCTCCCTTCTGGAAATGACACCTCTGGGCTTGAATAAGACTGTTGTTGTCCACACAA  
 TTTTGGAAATCTCGTATGTTATGATGAAGAAAAATCATGAAATGCTTGAAGGCAATGAGCGCTATGAGGG  
 CTACTGTGTTGACCTGGCTGCAGAAATCGCCAAACATTGTGGGTTCAAGTACAAGTTGACAATTGTTGGT  
 GATGGCAAGTATGGGGCCAGGGATGCAGACACGAAAATTTGGAATGGGATGGTTGGAGAACTTGATATG  
 GGAAAGCTGATATTGCAATTGCTCCATTAATACTTACCCTTGTGAGAGAAGAGGTGATTGACTTCTCAAA  
 GCCCTTATGAGCCTCGGGATATCTATCATGATCAAGAAGCCTCAGAAGTCAAACCCAGGAGTGTTTTCC  
 TTTCTTGATCCTTAGCCTATGAGATCTGGATGTGCATTGTTTTTGCCTACATTGGGGTCAAGTGTAGTTT  
 TATTCCTGGTCAGCAGATTTAGCCCTACGAGTGGCACACTGAGGAGTTTGAAGATGGAAGAGAAACACA  
 AAGTAGTGAATCAACTAATGAATTTGGGATTTTTAATAGTCTCTGGTTTTCTTGGGTGCCTTTATGCGG  
 CAAGGATGCGATATTTCCCAAGATCCCTCTCTGGGCGCATTGTTGGAGGTGTGTGGTGGTTCTTTACCC  
 TGATCATAATCTCCTCCTACACGGCTAACTTAGCTGCCTTCTGACTGTAGAGAGGATGGTGTCTCCCAT  
 CGAAAGTGCTGAGGATCTTTCTAAGCAAACAGAAATTGCTTATGGAACATTAGACTCTGGCTCCACTAAA  
 GAGTTTTTTCAGGAGATCTAAAATTCAGTGTTTTGATAAAAATGTGGACCTACATGCGGAGTGGGAGCCCT  
 CTGTGTTTGTGAGGACTACGGCCGAAGGGTGGCTAGAGTGCAGGAAAGTCAAAGGAAATATGCCTACTT  
 GTTGGAGTCCACGATGAACGAGTACATTGAGCAAAGGAAGCCTTGCACACCATGAAAGTTGGTGGAAAC  
 CTGGATTCAAAGGCTATGGCATCGCAACACCTAAAGGATCCTCATTAGAACCCAGTAAATCTTGCAAG  
 TATTGAAACTCAGTGAGCAAGCGTCTTAGACAAGCTGAAAAACAATGGTGGTACGATAAAGGTGAATG  
 TGGAGCCAAGGACTCTGGAAGTAAGGAAAAGACCAGTCCCTCAGTCTGAGCAACGTTGCTGGAGTATTC  
 TACATCCTTGTGCGGGGCTTGGTTTGGCAATGCTGGTGGCTTTGATTGAGTTCTGTTACAAGTCAAGGG  
 CCGAGGCGAAACGAATGAAGGTGGCAAAGAATGCACAGAATTAACCCATCTTCTCGCAGAATTCACA  
 GAATTTTGAACCTATAAGGAAGTTACAACGTATATGGCATCGAAAGTGTAAAATT

**ACGCGT**ACGCGGCCGCTCGAGCAGAAACTCATCTCAGAAGAGGATCTGGCAGCAATGATATCCTGGATT  
 ACAAGGATGACGACGATAAGGTTTAA

**Protein Sequence:** >RC212159 representing NM\_001083620  
Red=Cloning site Green=Tags(s)

MVQFSTSEFRLTPHIDNLEVANSFAVTNAFCSQFSRGVYAIKGFYDKKSVNTITSFSGTLHVSFITPSFP  
TDGTHPFVIQMRPDLKGALLSLIEYYQWDFAYLYDSRGLSTLQAVLDSAAEKKWQVTAINVGNINNDK  
KDEMYRSLFQDLELKKERRVILDCERDKVNDIVDQVITIGKHVKGYHYIIANLGF TDGDLLKIQFGGANV  
SGFQIVDYDDSLVSKFIERWSTLEEKEYPGAHTTTIKYTSALTYDAVQVMTEAFRNLRKQRIEISRRGNA  
GDCLANPAVPWGQVEIERALKQVQVEGLSGNIKFDQNGKRINY TINIMELKTNGPRKIGYWSEVDKMV  
TLTELPNGDTSLENKTVVVTITILESPYMMKNHEMLEGNERYEGYCVLAAEIAKHCGFKYKLTIVG  
DGKYGARDADTKIWNMGV GELVYGKADIAIAPLTITLVREEVIDFSKPFMSLGISIMIKKPQKSKPGVFS  
FLDPLAYEIWMCIVFAYIGVSVVFLVSRFSPYEWHTTEEFEDGRETQSSESTNEFGIFNSLWFLGAFMR  
QGCDISPRSLSGRIVGGVWFFTLIISSYTANLAAFLTVERMVSPIESAEDLSKQTEIAYGTLD SGSTK  
EFFRRSKIAVFDKMWTYMRSAEPSVFRVTTAEGVARVRKSKGKYAYLLESTMNEYIEQRKPCDTMKVGGN  
LDSKGYGIATPKGSSLRTPVNLAVLKLSEQVLDKLNKWWYDKGECGAKDSGSKEKTSALSLSNVAGVF  
YILVGGLGLAMLVALIEFCYKSRAEAKRMKVAKNAQINPSSSQNSQNFATYKEGYNVYGIESVKI

TRTRPLEQKLI SEEDLAANDILDYKDDDDKV

**Chromatograms:** [https://cdn.origene.com/chromatograms/mk8005\\_f05.zip](https://cdn.origene.com/chromatograms/mk8005_f05.zip)

**Restriction Sites:** Sgfl-Mlul

Cloning Scheme:



ACCN: NM\_001083620

ORF Size: 2508 bp

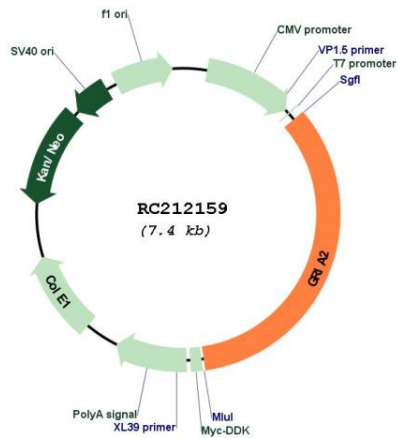
OTI Disclaimer: The molecular sequence of this clone aligns with the gene accession number as a point of reference only. However, individual transcript sequences of the same gene can differ through naturally occurring variations (e.g. polymorphisms), each with its own valid existence. This clone is substantially in agreement with the reference, but a complete review of all prevailing variants is recommended prior to use. [More info](#)

OTI Annotation: This clone was engineered to express the complete ORF with an expression tag. Expression varies depending on the nature of the gene.

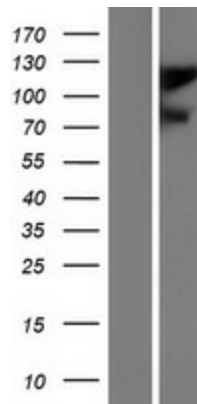
Components: The ORF clone is ion-exchange column purified and shipped in a 2D barcoded Matrix tube containing 10ug of transfection-ready, dried plasmid DNA (reconstitute with 100 ul of water).

<b>Reconstitution Method:</b>	<ol style="list-style-type: none"><li>1. Centrifuge at 5,000xg for 5min.</li><li>2. Carefully open the tube and add 100ul of sterile water to dissolve the DNA.</li><li>3. Close the tube and incubate for 10 minutes at room temperature.</li><li>4. Briefly vortex the tube and then do a quick spin (less than 5000xg) to concentrate the liquid at the bottom.</li><li>5. Store the suspended plasmid at -20°C. The DNA is stable for at least one year from date of shipping when stored at -20°C.</li></ol>
<b>Note:</b>	Plasmids are not sterile. For experiments where strict sterility is required, filtration with 0.22um filter is required.
<b>RefSeq:</b>	<a href="#">NM_001083620.2</a>
<b>RefSeq Size:</b>	5266 bp
<b>RefSeq ORF:</b>	2511 bp
<b>Locus ID:</b>	2891
<b>UniProt ID:</b>	<a href="#">P42262</a>
<b>Cytogenetics:</b>	4q32.1
<b>Protein Families:</b>	Druggable Genome, Ion Channels: Glutamate Receptors, Transmembrane
<b>Protein Pathways:</b>	Amyotrophic lateral sclerosis (ALS), Long-term depression, Long-term potentiation, Neuroactive ligand-receptor interaction
<b>MW:</b>	93.6 kDa
<b>Gene Summary:</b>	<p>Glutamate receptors are the predominant excitatory neurotransmitter receptors in the mammalian brain and are activated in a variety of normal neurophysiologic processes. This gene product belongs to a family of glutamate receptors that are sensitive to alpha-amino-3-hydroxy-5-methyl-4-isoxazole propionate (AMPA), and function as ligand-activated cation channels. These channels are assembled from 4 related subunits, GRIA1-4. The subunit encoded by this gene (GRIA2) is subject to RNA editing (CAG-&gt;CGG; Q-&gt;R) within the second transmembrane domain, which is thought to render the channel impermeable to Ca(2+). Human and animal studies suggest that pre-mRNA editing is essential for brain function, and defective GRIA2 RNA editing at the Q/R site may be relevant to amyotrophic lateral sclerosis (ALS) etiology. Alternative splicing, resulting in transcript variants encoding different isoforms, (including the flip and flop isoforms that vary in their signal transduction properties), has been noted for this gene. [provided by RefSeq, Jul 2008]</p>

Product images:



Circular map for RC212159



Western blot validation of overexpression lysate (Cat# [LY421241]) using anti-DDK antibody (Cat# [TA50011-100]). Left: Cell lysates from untransfected HEK293T cells; Right: Cell lysates from HEK293T cells transfected with RC212159 using transfection reagent MegaTran 2.0 (Cat# [TT210002]).