

Product datasheet for **RC212158**

PHTF2 (NM_020432) Human Tagged ORF Clone

Product data:

Product Type:	Expression Plasmids
Product Name:	PHTF2 (NM_020432) Human Tagged ORF Clone
Tag:	Myc-DDK
Symbol:	PHTF2
Mammalian Cell Selection:	Neomycin
Vector:	pCMV6-Entry (PS100001)
E. coli Selection:	Kanamycin (25 ug/mL)



[View online »](#)

ORF Nucleotide Sequence:

>RC212158 representing NM_020432
 Red=Cloning site Blue=ORF Green=Tags(s)

TTTTGTAATACGACTCACTATAGGGCGGCCGGGAATTCGTGACTGGATCCGGTACCGAGGAGATCTGCC
 GCC**CGCATCGCC**

ATGGCGCCCAAAGTCACAGATGCTATAGTCTGGTATCAAAGAAGGAGTTTCTCTGTGGCCACCACCG
 CCCAGGCCACAGCAAGTACTGCCTGGCTACTGCCAGTGTTCCTCAAGGACCAAGGGCTTTCATTCA
 GTGTTTGATTGGAGCATATGATCAACAAATATGGGAAAAATCTGTTGAACAGAGAGAAATCAAGTTATT
 AAAGTGGGCTAAGGAATAAACCAAGAAAAACAGCACATGTGAAACCAGACCTCATAGATGTTGATCTTG
 TAAGAGGGTCTGCATTTGCAAAGGCAAAGCCTGAAAGTCTTGGACTTCTGACCAGAAAGGGAATTGT
 TCGAGTTGATTTTTCCCTTTTTCTCCGGTGGTGGTTACAAGTAACATCAAAGTTCATTTTTCTGG
 CTTCTTGCTTTATCTTCAAGTTGCTGCAATAGTATTATTCTGCTCCACTTCTAGCCACACAGCA
 TACCTCTGACAGAGGTGATTGGCCGATATGGCTGATGCTGCTCCTGGAACTGTGCATTGCCAGATTGT
 TTCCACAAGAACCCAAACCTCTAAGTACAGGGGGTAAAAGAAGAAGGAAATTAAGAAAAGCAGCC
 CATTTGGAAGTACATAGGGAAGGAGATGGTTCTAGTACCACAGATAACACACAAGAGGGAGCAGTTCAGA
 ACCACGGTACAAGCACCTCTCACAGCGTTGGCACTGTCTTCAGAGATCTCTGGCATGCTGCTTTCTTTT
 ATCAGGATCAAAGAAAGCAAAGAATTCAATTGATAAATCAACTGAACTGACAATGGCTATGATCCCTT
 GATGGGAAGAAGACTGTTAAAAGCGGTGAAGATGGAATACAAAACCATGAACCTCAGTGTGAAACTATTC
 GACCAGAAGAGACAGCCTGGAACACAGGAACACTGAGGAATGGTCTAGCAAAGATACCCAAAGGACAAT
 AACAAATGTCTCTGATGAAGTCTCCAGTGAAGGAGTCTGAAACAGGATACTCATTACGTCGTCATGTG
 GACAGGACTTGAAGGTGTTCTTCGGAATAGAAAGTACACCATTATAAGAAACATTACCTAATGAGG
 ACGCCCTAAATCGGGTACTAGTTGCAGCTCTCGCTGTTCAAGTCCAGACAGGATCTGAGAGTGCAG
 GCCAGAATCTGAAACAGAAAGATGTGTTATGGGAAGACTTGTACATTGTGCAGAATGCCATTCATCTTGT
 ACCAGTGAGACAGATGTGAAAAATCATCAGATTATCCATGTGTGAAAAAAGAATATAGAGATGACCCTT
 TTCATCAGAGTCAATTTGCCCTGGCTCCATAGTCCCACCCAGGATTAGAAAAAATAAGTGTATAGTATG
 GGAAGGTAATGATTGTAAGAAAGCAGACATGTCTGTACTTGAAATCAGTGAATGATAATGAACAGAGTG
 AACAGCCATATACCAGGAATAGGATACCAGATTTTGGAAATGCAGTCTCTCATACTGGGTTAACTC
 CATTTGTTTTCCGACTTCTCAAGCTACAGACTGGAACAACCTCACAGCACATTCTGCTCAGAACTTTA
 TGTGATTGCATTTGGTTCTAATGAAGATGCATAGTCTTTCTATGGTTATAATAAGTTTTGTGGTTCGC
 GTGCTCTGTGTGGATTTCTTTTTTTGCTCTGTGTAGCAGAAAGAACTTATAAACAGCGATTACTTT
 TTGCAAAACTCTTTGGACATTTAACATCTGCAAGGAGGGCTCGAAAATCTGAGGTTCTCATTTCCGGTT
 GAAGAAAGTACAGAAATATAAAAATGTGGCTATCTCCGTTCTATCTTAAGCGTCGAGGTCCTCAGCGA
 TCAGTTGATGTAATAGTTTCATCTGCTTCTTATTGACTATCTCAGTTGTATTTATCTGTTGTGCCAGC
 TACTTCATGTACAGAGATCTTCCCTGATTGTCACACTACAATTGGGAATGGTAATCTGGTGCATCTCGTT
 AACACTTTTTCTCCTAAGATTTGTTACCCTGGATCAGAAACAAGTAAAAAATATAGTAATACCTCAATA
 TTACTTACTGAACAGATAAACCTCTACTTGAAGATGGAGAAAAACCTAACAAAAAGGAGGAACTGACAC
 TAGTGAATAATGTTTTAAACTGGCTACTAACTGCTAAAGGAGTTGGACAGTCCTTTTAGATTATATGG
 GCTTACAATGAATCCGCTGCTTTATAACATCACCCAGGTTGTTATCCTGTCAGCTGTTTCTGGTGTATC
 AGTGACTTGCTTGATTTAATTTAAAGCTATGGAAGATTAAGTCA

ACGCGTACGCGGCCGCTCGAGCAGAAACTCATCTCAGAAGAGGATCTGGCAGCAAATGATATCCTGGATT
 ACAAGGATGACGACGATAAGGTTTAA

Protein Sequence: >RC212158 representing NM_020432
Red=Cloning site Green=Tags(s)

MAPKVTD AIVVYQKKEFLSVATTAPGPQQVLPGYCQCSLKDQGLFIQCLIGAYDQQIWEKSVEQREIKFI
KLGLRNKPKKTAHVKPDLDVLDVRGSAFAKAKPESPWTSLTRKGIVRVVFFPFFRWWLQVTSKVIFFW
LLVLYLLQVAAI V LFCSTSSPHSIPLTEVIGPIWMLLLGTVHCQIVSTRTPKPPLSTGGKRRRKLKAA
HLEVHREGDGSSTDNTEGAVQNHGTSTSHSVGTVFRDLWHAFFL SGSKKAKNSIDKSTETDNGYVSL
DGKKT V KSGEDGIQNHQPQCETIRPEETA WNTGTLRNGPSKDTQRTITNV SDEV SSEE GPETGYS LRRHV
DRTSEGLRNRKSHYKHYPNEDAPKSGTSCSSRCSSSRQDSE SARPESETEDVLWEDLLHCAECHSSC
TSETDVENHQINPCVKKEYRDDPFHQSHLPWLHSSHPGLEKISAIWEGNDCKKADMSVLEISGMIMNRV
NSHIPGIGYQIFGNAVSLILGLTPFVFRLSQATDLEQLTAHSASELYVIAFGSNEDVIVLSMVIISFVVR
VSLVWIFFFLCVAERTYKQRLLFKALFGHLTSARRARKSEVPHFRLKKVQNIKMMWLSRSLKRRGPQR
SVDVIVSSAFLLTISVVICCAQLLHVHEIFLDCHYNWELVIWCISLTLFLLRFVTLGSETSKKYSNTSI
LLTEQINLYLMEKKPNKKEELTLVNNVLKLATKLLKELDSPFRLYGLTMNPLL YNITQVVILSAVSGVI
SDLLGFNLKLVKIKS

TRTRPLEQKLI SEEDLAANDILDYKDDDDKV

Chromatograms: https://cdn.origene.com/chromatograms/mk8010_c05.zip

Restriction Sites: Sgfl-Mlul

Cloning Scheme:



ACCN: NM_020432

ORF Size: 2355 bp

OTI Disclaimer: The molecular sequence of this clone aligns with the gene accession number as a point of reference only. However, individual transcript sequences of the same gene can differ through naturally occurring variations (e.g. polymorphisms), each with its own valid existence. This clone is substantially in agreement with the reference, but a complete review of all prevailing variants is recommended prior to use. [More info](#)

OTI Annotation: This clone was engineered to express the complete ORF with an expression tag. Expression varies depending on the nature of the gene.

Components: The ORF clone is ion-exchange column purified and shipped in a 2D barcoded Matrix tube containing 10ug of transfection-ready, dried plasmid DNA (reconstitute with 100 ul of water).

Reconstitution Method:

1. Centrifuge at 5,000xg for 5min.
2. Carefully open the tube and add 100ul of sterile water to dissolve the DNA.
3. Close the tube and incubate for 10 minutes at room temperature.
4. Briefly vortex the tube and then do a quick spin (less than 5000xg) to concentrate the liquid at the bottom.
5. Store the suspended plasmid at -20°C. The DNA is stable for at least one year from date of shipping when stored at -20°C.

Note: Plasmids are not sterile. For experiments where strict sterility is required, filtration with 0.22um filter is required.

RefSeq: [NM_020432.3](#)

RefSeq Size: 4802 bp

RefSeq ORF: 2244 bp

Locus ID: 57157

UniProt ID: [Q8N3S3](#)

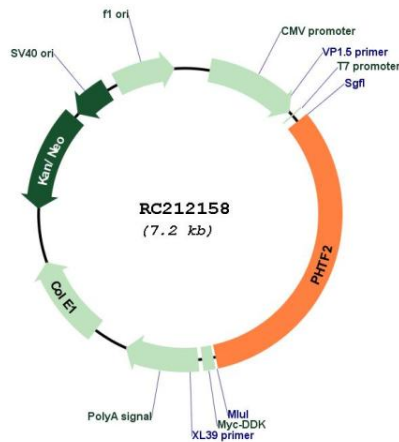
Cytogenetics: 7q11.23-q21.11

Protein Families: Transcription Factors, Transmembrane

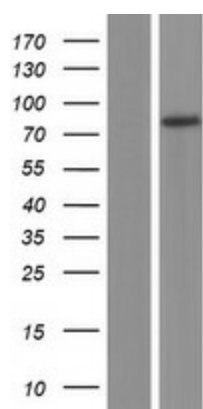
MW: 84.4 kDa

Gene Summary: May play a role in transcription regulation.[UniProtKB/Swiss-Prot Function]

Product images:



Circular map for RC212158



Western blot validation of overexpression lysate (Cat# [LY412482]) using anti-DDK antibody (Cat# [TA50011-100]). Left: Cell lysates from untransfected HEK293T cells; Right: Cell lysates from HEK293T cells transfected with RC212158 using transfection reagent MegaTran 2.0 (Cat# [TT210002]).