

Product datasheet for **RC212156**

PTPN20B (PTPN20) (NM_015605) Human Tagged ORF Clone

Product data:

Product Type: Expression Plasmids
Product Name: PTPN20B (PTPN20) (NM_015605) Human Tagged ORF Clone
Tag: Myc-DDK
Symbol: PTPN20B
Synonyms: bA42B19.1; bA142I17.1; CT126; PTPN20A; PTPN20B
Mammalian Cell Selection: Neomycin
Vector: pCMV6-Entry (PS100001)
E. coli Selection: Kanamycin (25 ug/mL)
ORF Nucleotide Sequence: >RC212156 representing NM_015605
Red=Cloning site Blue=ORF Green=Tags(s)

TTTTGTAATACGACTCACTATAGGGCGGCCGGAATTCGTCGACTGGATCCGGTACCGAGGAGATCTGCC
GCC**CGATCGCC**

ATGTCTTCACCTAGGGACTTTAGAGCAGAGCCTGTAAACGATTATGAGGGAAATGACTCTGAAGCAGAAG
ACTTGAATTTTCAGGGAGACTTTGCCTTCATCAAGTCAGGAAAACACACCTAGATCAAAGTTTTTGAAAA
TAAAGTTAATTCAGAGAAGGTAAAACCTTCTCTCGGAATTTCCACATAATGATTATGAGGATGTTTTT
GAAGAGCCTTCAGAAAGTGGCAGTGATCCAGCATGTGGACAGCCAGAGGCCCTTCAGAAGAGACAGGT
GGAGCAGTGAGGATGAGGAGGCTGCAGGGCCATCACAGGCTCTCTCCCCTCTACTTTCTGATACGCGCAA
AATTGTTTCTGAAGGAGAACTAGATCAGTTGGCTCAGATTCGGCCATTAATATTC AATTTTCATGAGCAG
ACAGCCATCAAGGATTGTTTGAAAATCCTTGAGGAAAAACAGCAGCGTATGATATCATGACGAATTTA
TGGCTTTAGAACTTAAGAATCTGCCTGGTGAGTTCAACTCTGGGAATCAACCAAGCAACAGAGAAAAAAA
CAGATACCGAGATATTCTTCCATTTCAACATCATGGATATAGTGGCCCAAATGAGAGAACAACGTTCTGG
CATGGTTCAAACGAAGGAGCAGTATCACTTTTGTACGATATTGTGCT

ACGCGTACGCGGGCCGCTCGAGCAGAACTCATCTCAGAAGAGGATCTGGCAGCAAATGATATCCTGGATT
ACAAGGATGACGACGATAAGGTTTAA



[View online »](#)

Protein Sequence: >RC212156 representing NM_015605
Red=Cloning site Green=Tags(s)

MSSPRDFRAEPVNDYEGNDSEAEDLNFRETLPSSSQENTPRSKVFENKVNSEKVKLSLRNFPNDYEDVF
 EEPSESGSDPSMWTARGPFRDRWSEDEEAAGPSQALSPLLSDTRKIVSEGELDQLAQIRPLIFNFHEQ
 TAIKDCLKILEEKTAAYDIMQEFMALELKNLPGEFNSGNQPSNREKNRYRDILPFQHHGYSGNERTTFW
 HGSNEGAVSLLLRYCA

TRTRPLEQKLISEEDLAANDILDYKDDDDKV

Chromatograms: https://cdn.origene.com/chromatograms/mk6766_b11.zip

Restriction Sites: SgfI-MluI

Cloning Scheme:



ACCN: NM_015605

ORF Size: 678 bp

OTI Disclaimer: The molecular sequence of this clone aligns with the gene accession number as a point of reference only. However, individual transcript sequences of the same gene can differ through naturally occurring variations (e.g. polymorphisms), each with its own valid existence. This clone is substantially in agreement with the reference, but a complete review of all prevailing variants is recommended prior to use. [More info](#)

OTI Annotation: This clone was engineered to express the complete ORF with an expression tag. Expression varies depending on the nature of the gene.

Components: The ORF clone is ion-exchange column purified and shipped in a 2D barcoded Matrix tube containing 10ug of transfection-ready, dried plasmid DNA (reconstitute with 100 ul of water).

Reconstitution Method:

1. Centrifuge at 5,000xg for 5min.
2. Carefully open the tube and add 100ul of sterile water to dissolve the DNA.
3. Close the tube and incubate for 10 minutes at room temperature.
4. Briefly vortex the tube and then do a quick spin (less than 5000xg) to concentrate the liquid at the bottom.
5. Store the suspended plasmid at -20°C. The DNA is stable for at least one year from date of shipping when stored at -20°C.

RefSeq: [NM_015605.6](#)

RefSeq Size: 2494 bp

RefSeq ORF: 681 bp

Locus ID: 26095

UniProt ID: [Q4JDL3](#)

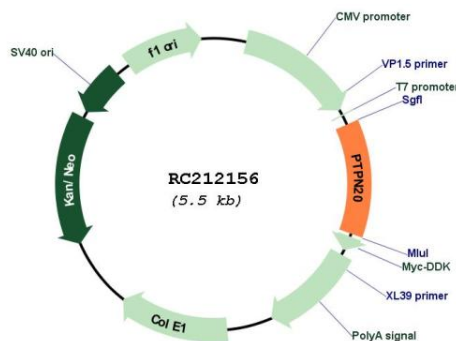
Cytogenetics: 10q11.22

Protein Families: Druggable Genome, Phosphatase

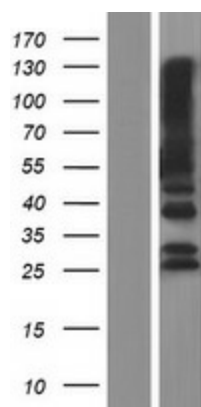
MW: 25.7 kDa

Gene Summary: The product of this gene belongs to the family of classical tyrosine-specific protein tyrosine phosphatases. Many protein tyrosine phosphatases have been shown to regulate fundamental cellular processes. The encoded protein appears to be targeted to sites of actin polymerization. A pseudogene of this gene has been defined on chromosome 10. Alternative splicing results in multiple transcript variants. [provided by RefSeq, Apr 2014]

Product images:



Circular map for RC212156



Western blot validation of overexpression lysate (Cat# [LY414452]) using anti-DDK antibody (Cat# [TA50011-100]). Left: Cell lysates from untransfected HEK293T cells; Right: Cell lysates from HEK293T cells transfected with RC212156 using transfection reagent MegaTran 2.0 (Cat# [TT210002]).