

## Product datasheet for RC212155

### AGTRAP (NM\_020350) Human Tagged ORF Clone

#### Product data:

**Product Type:** Expression Plasmids  
**Product Name:** AGTRAP (NM\_020350) Human Tagged ORF Clone  
**Tag:** Myc-DDK  
**Symbol:** AGTRAP  
**Synonyms:** ATRAP  
**Mammalian Cell Selection:** Neomycin  
**Vector:** pCMV6-Entry (PS100001)  
**E. coli Selection:** Kanamycin (25 ug/mL)  
**ORF Nucleotide Sequence:** >RC212155 representing NM\_020350  
Red=Cloning site Blue=ORF Green=Tags(s)

TTTTGTAATACGACTCACTATAGGGCGGCCGGAATTCGTCGACTGGATCCGGTACCGAGGAGATCTGCC  
GCC**CGATCGCC**

ATGGAGCTGCCTGCTGTGAACCTGAAGGTGATTCTCCTAGGCTACTGGCTGCTGACAACCTGGGGCTGCA  
TTGTATTCTCAGGCTCCTATGCCTGGGCCAACTTCACCATCTGGCCTTGGGCGTGTGGCTGTGGCTCA  
GCGGGACTCCATCGACGCCATAAGCATGTTTCTGGGTGGCTTGTGGCCACCATCTTCTGGACATCGTG  
CACATCAGCATCTTCTACCCGCGGGTCAAGCATGTTTCTGGGTGGCTTGTGGCCACCATCTTCTGGACATCGTG  
TCAGCTTGCTGCTCAAGCCGCTCTCCTGCTGCTTCGTCTACCACATGTACCGGGAGCGCGGGGTGAGCT  
CCTGGTCCACACTGGTTTCCTTGGGTCTTCTCAGGACCGTAGTGCCTACCAGACGATTGACTCAGCAGAG  
GCGCCCGCAGATCCCTTTGCAGTCCCAGAGGGCAGGAGTCAAGATGCCCGAGGGTAC

**ACGCGT**ACGCGGCCGCTCGAGCAGAACTCATCTCAGAAGAGGATCTGGCAGCAAATGATATCCTGGATT  
ACAAGGATGACGACGATAAGGTTTAA

**Protein Sequence:** >RC212155 representing NM\_020350  
Red=Cloning site Green=Tags(s)

MELPAVNLKVILLGHWLLTTWGCIVFSGSYAWANFTILALGVWAVAQRDSIDAISMFLGGLLATIFLDIV  
HISIFYPRVSLTDTGRFGVGMAILSLLLKPLSCCFVYHMYRERGGELLVHTGFLGSSQDRSAYQTIDSAE  
APADPFVPEGRSQDARGY

**TRTRPLEQKLI**SEEDLAANDILDYKDDDDKV

**Chromatograms:** [https://cdn.origene.com/chromatograms/mk6106\\_a12.zip](https://cdn.origene.com/chromatograms/mk6106_a12.zip)



[View online »](#)

Restriction Sites: SgfI-MluI

Cloning Scheme:



ACCN: NM\_020350

ORF Size: 477 bp

OTI Disclaimer: The molecular sequence of this clone aligns with the gene accession number as a point of reference only. However, individual transcript sequences of the same gene can differ through naturally occurring variations (e.g. polymorphisms), each with its own valid existence. This clone is substantially in agreement with the reference, but a complete review of all prevailing variants is recommended prior to use. [More info](#)

OTI Annotation: This clone was engineered to express the complete ORF with an expression tag. Expression varies depending on the nature of the gene.

Components: The ORF clone is ion-exchange column purified and shipped in a 2D barcoded Matrix tube containing 10ug of transfection-ready, dried plasmid DNA (reconstitute with 100 ul of water).

Reconstitution Method:

1. Centrifuge at 5,000xg for 5min.
2. Carefully open the tube and add 100ul of sterile water to dissolve the DNA.
3. Close the tube and incubate for 10 minutes at room temperature.
4. Briefly vortex the tube and then do a quick spin (less than 5000xg) to concentrate the liquid at the bottom.
5. Store the suspended plasmid at -20°C. The DNA is stable for at least one year from date of shipping when stored at -20°C.

Note: Plasmids are not sterile. For experiments where strict sterility is required, filtration with 0.22um filter is required.

RefSeq: [NM\\_020350.5](#)

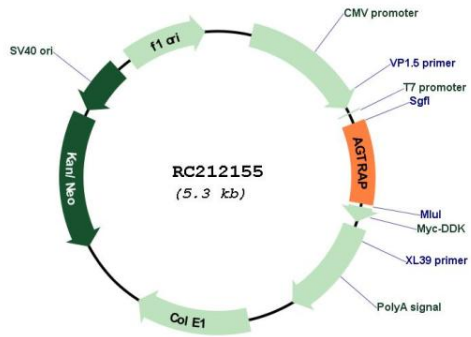
RefSeq Size: 1108 bp

RefSeq ORF: 480 bp

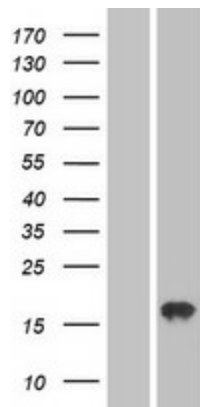
**Locus ID:** 57085  
**UniProt ID:** [Q6RW13](#)  
**Cytogenetics:** 1p36.22  
**Protein Families:** Druggable Genome, Transmembrane  
**MW:** 17.2 kDa  
**Gene Summary:**

This gene encodes a transmembrane protein localized to the plasma membrane and perinuclear vesicular structures. The gene product interacts with the angiotensin II type I receptor and negatively regulates angiotensin II signaling. Alternative splicing of this gene generates multiple transcript variants encoding different isoforms. [provided by RefSeq, Jul 2008]

**Product images:**



Circular map for RC212155



Western blot validation of overexpression lysate (Cat# [LY402771]) using anti-DDK antibody (Cat# [TA50011-100]). Left: Cell lysates from untransfected HEK293T cells; Right: Cell lysates from HEK293T cells transfected with RC212155 using transfection reagent MegaTran 2.0 (Cat# [TT210002]).