

Product datasheet for **RC212146**

CCDC80 (NM_199511) Human Tagged ORF Clone

Product data:

Product Type:	Expression Plasmids
Product Name:	CCDC80 (NM_199511) Human Tagged ORF Clone
Tag:	Myc-DDK
Symbol:	CCDC80
Synonyms:	CL2; DRO1; LINC01279; okuribin; SSG1; URB
Mammalian Cell Selection:	Neomycin
Vector:	pCMV6-Entry (PS100001)
E. coli Selection:	Kanamycin (25 ug/mL)



[View online »](#)

**ORF Nucleotide
Sequence:**

>RC212146 ORF sequence
 Red=Cloning site Blue=ORF Green=Tags(s)

TTTTGTAATACGACTCACTATAGGGCGGCCGGAATTCGTCGACTGGATCCGGTACCGAGGAGATCTGCC
 GCC**CGCATCGCC**

ATGACATGGAGAATGGGACCCCGTTTCACTATGCTGTTGGCCATGTGGCTAGTGTGTGGATCAGAACCC
 ACCCCCATGCCACTATTAGAGGCAGCCACGGAGGACGGAAAGTGCTTTGGTTTCTCCGGACAGCAGTAG
 GCCAGCTCGGTTTCTGAGGCACACTGGGAGGTCTCGCGGAATTGAGAGATCCACTCTGGAGGAACCAAA
 CTTTCAGCCTCTCCAGAGAAGGAGGAGTGTGCCGTGTTGAGACTAGCTCGCCCAACAGAGCCGCCAGCC
 GCTCGGACATCAATGGGGCCCGGTGAGACCTGAGCAAAGACCAGCAGCCAGGGGCTCTCCGCGTGAGAT
 GATCAGAGATGAGGGTCTCAGCTCGGTCAAGAATGTTGCGTTTCCCTTCGGGGTCCAGCTCTCCCAAC
 ATCCTTGCAGCTTTGCAGGGAAGAACAGAGTATGGGTCACTCAGCCCTCATGCCTCGGAAGGCTACT
 ACCGCCTCATGATGAGCCTGCTGAAGGACGATGTGTACTGTGAGCTGGCGGAGAGGCACATCCAACAGAT
 TGTGCTTCCACCAGGCAGGTGAGGAAGGAGCAAGGTGAGAAGGATCACCAGCGAGGGCCAGATCCTG
 GAGCAGCCCTTGACCCTAGCCTCATCCCTAAGCTGATGAGCTTCTGAAGCTGGAGAAGGGCAAGTTG
 GCATGGTGTGCTGAAGAAGACGCTGCAGGTGGAGGAGCGCTATCCATATCCCGTTAGGCTGGAAGCCAT
 GTACGAGGTATCGACCAAGGCCCATCCGTAGGATCGAGAAGATCAGGCAGAAGGGCTTTGTCCAGAAA
 TGTAAGGCCTCTGGTGTAGAGGGCCAGGTGGTGGCGGAGGGGAATGACGGTGGAGGGGAGCAGGAAGGC
 CAAGCCTGGGCAGCGAGAAGAAGAAAGAGGACCAAGGAGAGCACAAGTCCCACCAACCAGAGAGAGTCCG
 GGTGAAGTCTGAGAAAAGTGGCCGCACTGCACCAGCTTTGCCCAACCTCCCTCAACCCCGAGAGCC
 ACCACCTTCTCCTGCCCCAGCCACAACAGTACTCGGTCCACGTCCCGGGCGGTAACAGTTGTGCAA
 GACCTATGACCACCACTGCCTTTCCACCACGCGAGAGCCCTGGACCCCTCACCTCCACAGCCCC
 TACAACCACTGAGGTGATCACTGCCAGGAGACCTCAGTTTCAGAGAATCTTTACCCTCCATCCCGGAAG
 GATCAGCACAGGAGAGGCCACAGACAACCAGGAGGCCAGCAAGGCCACCAGCTTGAGAGCTTACAA
 ATGCCCTCCCACCACCTCTCAGAACCAGCACAAGGGCTGCTGGCCAGGCCGTTTCCGGGACAACCG
 CATGGACAGGCGGAACATGGCCACCGAGACCAATGTGGTCCAGGTCTCCCAAGCCAGCAAAGGAG
 AAACCTCCAAAAGAAGGCCAGGACAAAATTCTTAGTAAAGATGAGGAGAAGTATGACCTCAGCC
 GGCCTACTGCCTCTCAGCTGGAGGACGAGCTGCAGGTGGGAATGTTCCCTTAAAAAGCAAAGGAGTC
 TAAAAAGCATGAAAAGCTTGAGAAAACAGAGAAGGAGAAGAAAAAAGATGAAGATGAGAACGCAGAC
 AAGTTACTTAAGAGTGAAAAGCAATGAAGAAGTCTGAGAAAAAGAGCAAGCAAGAGAAAGAGAAGAGCA
 AGAAGAAAAAGGAGGTAAAACAGAACAGGATGGCTATCAGAAACCCACCAACAAACACTTCACGCAGAG
 TCCCAAGAAGTCAAGTGGCCGACCTGCTGGGGTCTTTGAAGGCAAACGAAGACTCCTTCTGATCACTGCT
 CCCAAGGCTGAGAACAATATGTATGTGCAACAACGTGATGAATATCTGGAAAGTTTCTGCAAGATGGCTA
 CCAGGAAAATCTCTGTGATCACCATCTTCGGCCCTGTCAACAACAGCACCATGAAAATCGACCACCTTCA
 GCTAGATAATGAGAAGCCATGCGAGTGGTGGATGATGAAGACTTGGTAGACCAGCGTCTCATCAGCGAG
 CTGAGGAAAGAGTACGGAATGACCTACAATGACTTCTTTCATGGTGTAAACAGATGTGGATCTGAGAGTCA
 AGCAATACTATGAGGTACCAATAACAATGAAGTCTGTGTTGATCTGATCGATACTTTCCAGTCCCGAAT
 CAAAGATATGGAGAAGCAGAAGAAGGAGGCATTGTTTGAAGAGGACAAAAAGCAGTCCCTGGAGAAC
 TTCTATCCAGGTTCCGGTGGAGGAGGAGTGTGGTGTGATCTGCTCCTAACGATGAAGACTGGGCCT
 ATTCACAGCAGCTCTCTGCCCTCAGTGGTCAGGCGTGCAATTTGGTCTGCGCCACATAACCATTCTGAA
 GCTTTTAGGCGTTGGAGAGGAAGTTGGGGAGTGTAGAACTGTTCCCAATTAATGGGAGCTCTGTTGTT
 GAGCGAGAAGACGTACCAGCCATTTGGTGAAGACATTCGTAATATTTTCAAGTGAAGCCGGAGTACT
 TCTCCATGCTTCTAGTCGAAAAGACGGAAATGTCAAATCCTGGTATCCTTCCCAATGTGGTCCATGGT
 GATTGTGTACGATTTAATTGATTCGATGCAACTTCGGAGACAGGAAATGGCGATTACGAGTCACTGGG
 ATGCGCTGCCAGAAGATGAGTATGCAGGCTATGGTTACCATAGTTACCACCAAGGATACCAGGATGGT
 ACCAGGATGACTACCGTCATCATGAGAGTTATCACCATGGATACCCTAC

ACGCGTACGCGGCCGCTCGAGCAGAACTCATCTCAGAAGAGGATCTGGCAGCAAATGATATCCTGGATT
 ACAAGGATGACGACGATAAGGTTTAA

Protein Sequence: >RC212146 protein sequence
 Red=Cloning site Green=Tags(s)

```

MTWRMGPRFTMLLAMWLVCGSEPHPHATIRGSHGGRKVPVSPDSSRPARFLRHTGRSRGIERSTLEEPN
LQPLQRRRSVPVLRARPTPEPPARSDINGAAVRPEQRPAAARGSPREIRDEGSSARSRLRFPSGSSPN
ILASFAGKNRVVVISAPHASEGYRMLMSLLKDDVYCELAERHIQQIVLFHQAGEEGGKVRRTISEGQIL
EQPLDPSLIPKLMFSLKLEKGGKGMVLLKKTQVEERYYPVRLLEAMYEVIDQGPVIRRIEKIRQKGFVQK
CKASGVEGQVVAEGNDGGGAGRPSLGSEKKKEDPRRAQVPPTRESRVKVLRLKLAATAPALPQPPSTPRA
TTLPPAPATTVTRSTSRAVTVAAARPMTTTAFPTTQRPWTPSPSHRPTTTEVITARRPSVSNLYPPSRK
DQHRERPQTTRRPSKATSLESFTNAPPTTISEPSTRAAGPGRFRDNMRDRREHGRDPNVVPGPPKPAKE
KPPKKAQDKILSNEYEEKYDLRPTASQLEDELQVGNVPLKKAKEKSKHEKLEKPEKEKMKMKNENAD
KLLKSEKQMKSEKSKQEKEKSKKKKGGKTEQDGYQKPTNKHFTQSPKKSVDLLGSFEGKRLLLLITA
PKAENNMVYVQRDEYLESFKMATRKISVITIFGPVNSTMKIDHFQLDNEKPMRVVDEDLVDQRLISE
LRKEYGMTYNDFFMVLTDVLRVKQYYEVPITMKSVDLIDTFQSRIDMEKQKKEGIVCKEDKKQSLN
FLSRFRWRRRLVISAPNDEDWAYSQQLSALSGQACNFGLRHITILKLLGVGEEVGGVLELFPINGSSV
EREDVPAHLVKDIRNYFQVSPEYFMSLLVGKDGNVKSWYSPMWSMVIVYDLIDSMQLRRQEMAIQQSLG
MRCPEDEYAGYGYHSYHQYQDGYQDDYRHESYHHGYPY
  
```

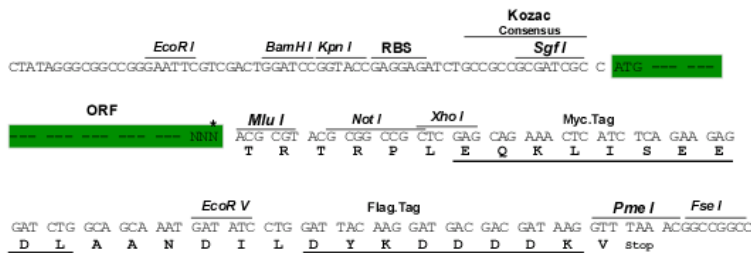
TRTRPLEQKLISEEDLAANDILDYKDDDDKV

Chromatograms: https://cdn.origene.com/chromatograms/mk6445_g10.zip

Restriction Sites: SgfI-MluI

Cloning Scheme:

Cloning sites used for ORF Shuttling:



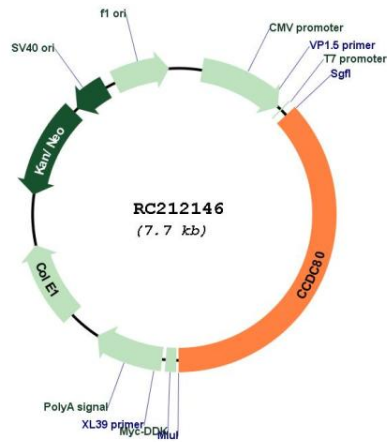
* The last codon before the Stop codon of the ORF

ACCN: NM_199511

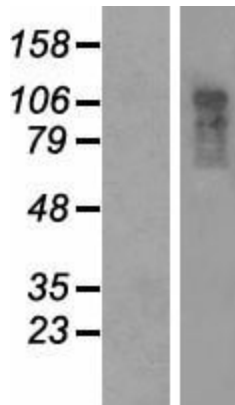
ORF Size: 2850 bp

OTI Disclaimer:	The molecular sequence of this clone aligns with the gene accession number as a point of reference only. However, individual transcript sequences of the same gene can differ through naturally occurring variations (e.g. polymorphisms), each with its own valid existence. This clone is substantially in agreement with the reference, but a complete review of all prevailing variants is recommended prior to use. More info
OTI Annotation:	This clone was engineered to express the complete ORF with an expression tag. Expression varies depending on the nature of the gene.
Components:	The ORF clone is ion-exchange column purified and shipped in a 2D barcoded Matrix tube containing 10ug of transfection-ready, dried plasmid DNA (reconstitute with 100 ul of water).
Reconstitution Method:	<ol style="list-style-type: none">1. Centrifuge at 5,000xg for 5min.2. Carefully open the tube and add 100ul of sterile water to dissolve the DNA.3. Close the tube and incubate for 10 minutes at room temperature.4. Briefly vortex the tube and then do a quick spin (less than 5000xg) to concentrate the liquid at the bottom.5. Store the suspended plasmid at -20°C. The DNA is stable for at least one year from date of shipping when stored at -20°C.
RefSeq:	NM_199511.3
RefSeq Size:	4712 bp
RefSeq ORF:	2853 bp
Locus ID:	151887
UniProt ID:	Q76M96
Cytogenetics:	3q13.2
MW:	108.2 kDa
Gene Summary:	Promotes cell adhesion and matrix assembly.[UniProtKB/Swiss-Prot Function]

Product images:



Circular map for RC212146



Western blot validation of overexpression lysate (Cat# [LY404584]) using anti-DDK antibody (Cat# [TA50011-100]). Left: Cell lysates from untransfected HEK293T cells; Right: Cell lysates from HEK293T cells transfected with [RC224369] using transfection reagent MegaTran 2.0 (Cat# [TT210002]).