

Product datasheet for RC212144

PPP2R4 (PTPA) (NM_021131) Human Tagged ORF Clone

Product data:

| | |
|---------------------------|---|
| Product Type: | Expression Plasmids |
| Product Name: | PPP2R4 (PTPA) (NM_021131) Human Tagged ORF Clone |
| Tag: | Myc-DDK |
| Symbol: | PPP2R4 |
| Synonyms: | PP2A; PPP2R4; PR53 |
| Mammalian Cell Selection: | Neomycin |
| Vector: | pCMV6-Entry (PS100001) |
| E. coli Selection: | Kanamycin (25 ug/mL) |
| ORF Nucleotide Sequence: | >RC212144 representing NM_021131 Red=Cloning site Blue=ORF Green=Tags(s) |

TTTTGTAATACGACTCACTATAGGGCGGCCGGAATTCGTCGACTGGATCCGGTACCGAGGAGATCTGCC
GCC**CGATCGCC**

ATGGCTGAGGGCGAGCGGCAGCCGCCAGATTCTTCAGAGGAGGCCCTCCAGCCACTCAGAACTTCA
TCATTCCAAAAAGGAGATCCACACAGTCCAGACATGGGCAAATGGAAGCGTTCTCAGGCATACGCTGA
CTACATCGGATTCATCCTTACCCTCAACGAAGGTGTGAAGGGGAAGAAGCTGACCTTCGAGTACAGAGTC
TCCGAGGCCATTGAGAACTAGTCGCTCTCTCAACACGCTGGACAGGTGGATTGATGAGACTCCTCCAG
TGGACCAGCCCTCTCGGTTTGGGAATAAGGCATACAGGACCTGGTATGCCAAACTTGATGAGGAAGCAGA
AACTTGGTGGCCACAGTGGTCCCTACCCATCTGGCAGCTGCTGTGCCTGAGGTGGCTGTTACCTAAAG
GAGTCAGTGGGAACTCCACGCGCATTGACTACGGCACAGGCATGAGGCAGCCTTCGCTGCTTCTCTCT
GCTGTCTCTGCAAGATTGGGGTCTCCGGTGGATGACCAAATAGCTATTGTCTTCAAGGTGTTCAATCG
GTACCTTGAGGTTATGCGGAAACTCCAGAAAACATACAGGATGGAGCCAGCCGGCAGCCAGGGAGTGTGG
GGTCTGGATGACTTCCAGTTTCTGCCCTTCTGCGGCGAGTTCGCAGCTGATAGACCACCCATACCTGG
AGCCCAGACACTTGTGGATGAGAAGCCGTGAATGAGAACCACAAGGACTACATGTTCTGGAGTGTAT
CCTGTTTATTACCGAGATGAAGACTGGCCATTTGCAGAGCACTCAACCAGCTGTGGAACATCAGCGCC
GTCCCTTCTGGTCCAAAGTGAACCAGGGTCTCATCCGATGTATAAGGCCGAGTGCCTGGAGAAGTTCC
CTGTGATCCAGCACTTCAAGTTCGGGAGCCTGCTGCCATCCATCCTGTACAGTCGGGC

ACGCGTACGCGGCCGCTCGAGCAGAAACTCATCTCAGAAGAGGATCTGGCAGCAAATGATATCCTGGATT
ACAAGGATGACGACGATAAGGTTTAA



[View online »](#)

Protein Sequence: >RC212144 representing NM_021131
Red=Cloning site Green=Tags(s)

MAEGERQPPPDSSSEAPPATQNFIIIPKKEIHTVPDMGKWKRSQAYADYIGFILTLNEGKGGKLTFEYRV
 SEATIEKLVALNLTDRWIDETPPVDQPSRFGNKAYRTWYAKLDEEAENLVATVVPHTLAAAVPEVAVYLK
 ESVGNSTRIDYGTGHEAAFAAFLCCLCKIGVLRVDDQIAIVFKVFNRYLEVMRKLQKTYRMEPAGSQGVW
 GLDDFQFLPFIWGSSQLIDHPYLEPRHFVDEKAVNENHKDYMFLECILFITEMKTGPF AEHSNQLWNISA
 VPSWSKVNQGLIRMYKAECLEKFPVIQHFKFGSLLPIHPVTSG

TRTRPLEQKLISEEDLAANDILDYKDDDDKV

Chromatograms: https://cdn.origene.com/chromatograms/mk6386_c05.zip

Restriction Sites: SgfI-MluI

Cloning Scheme:



ACCN: NM_021131

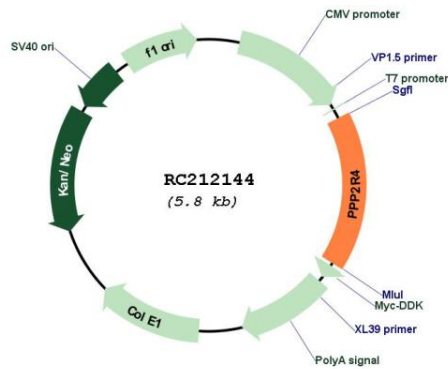
ORF Size: 969 bp

OTI Disclaimer: Due to the inherent nature of this plasmid, standard methods to replicate additional amounts of DNA in E. coli are highly likely to result in mutations and/or rearrangements. Therefore, OriGene does not guarantee the capability to replicate this plasmid DNA. Additional amounts of DNA can be purchased from OriGene with batch-specific, full-sequence verification at a reduced cost. Please contact our customer care team at custsupport@origene.com or by calling 301.340.3188 option 3 for pricing and delivery.

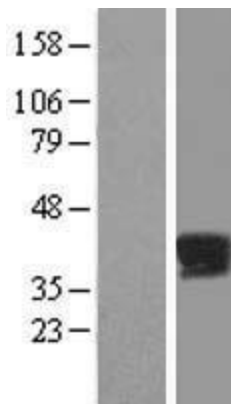
The molecular sequence of this clone aligns with the gene accession number as a point of reference only. However, individual transcript sequences of the same gene can differ through naturally occurring variations (e.g. polymorphisms), each with its own valid existence. This clone is substantially in agreement with the reference, but a complete review of all prevailing variants is recommended prior to use. [More info](#)

| | |
|-------------------------------|--|
| OTI Annotation: | This clone was engineered to express the complete ORF with an expression tag. Expression varies depending on the nature of the gene. |
| Components: | The ORF clone is ion-exchange column purified and shipped in a 2D barcoded Matrix tube containing 10ug of transfection-ready, dried plasmid DNA (reconstitute with 100 ul of water). |
| Reconstitution Method: | <ol style="list-style-type: none">1. Centrifuge at 5,000xg for 5min.2. Carefully open the tube and add 100ul of sterile water to dissolve the DNA.3. Close the tube and incubate for 10 minutes at room temperature.4. Briefly vortex the tube and then do a quick spin (less than 5000xg) to concentrate the liquid at the bottom.5. Store the suspended plasmid at -20°C. The DNA is stable for at least one year from date of shipping when stored at -20°C. |
| RefSeq: | NM_021131.5 |
| RefSeq Size: | 2666 bp |
| RefSeq ORF: | 972 bp |
| Locus ID: | 5524 |
| UniProt ID: | Q15257 |
| Cytogenetics: | 9q34.11 |
| Domains: | PTPA |
| Protein Families: | Druggable Genome, Phosphatase |
| MW: | 36.6 kDa |
| Gene Summary: | <p>Protein phosphatase 2A is one of the four major Ser/Thr phosphatases and is implicated in the negative control of cell growth and division. Protein phosphatase 2A holoenzymes are heterotrimeric proteins composed of a structural subunit A, a catalytic subunit C, and a regulatory subunit B. The regulatory subunit is encoded by a diverse set of genes that have been grouped into the B/PR55, B'/PR61, and B''/PR72 families. These different regulatory subunits confer distinct enzymatic specificities and intracellular localizations to the holoenzyme. The product of this gene belongs to the B' family. This gene encodes a specific phosphotyrosyl phosphatase activator of the dimeric form of protein phosphatase 2A. Alternative splicing results in multiple transcript variants encoding different isoforms. [provided by RefSeq, Jul 2008]</p> |

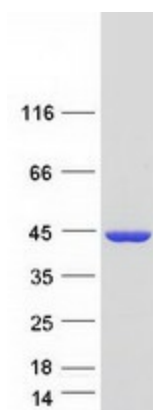
Product images:



Circular map for RC212144



Western blot validation of overexpression lysate (Cat# [LY412071]) using anti-DDK antibody (Cat# [TA50011-100]). Left: Cell lysates from untransfected HEK293T cells; Right: Cell lysates from HEK293T cells transfected with RC212144 using transfection reagent MegaTran 2.0 (Cat# [TT210002]).



Coomassie blue staining of purified PTPA protein (Cat# [TP312144]). The protein was produced from HEK293T cells transfected with PTPA cDNA clone (Cat# RC212144) using MegaTran 2.0 (Cat# [TT210002]).