

Product datasheet for RC212136L1

Neurabin 1 (PPP1R9A) (NM_017650) Human Tagged Lenti ORF Clone

Product data:

Product Type:	Expression Plasmids
Product Name:	Neurabin 1 (PPP1R9A) (NM_017650) Human Tagged Lenti ORF Clone
Tag:	Myc-DDK
Symbol:	Neurabin 1
Synonyms:	Neurabin-I; NRB1; NRBI
Mammalian Cell Selection:	None
Vector:	pLenti-C-Myc-DDK (PS100064)
E. coli Selection:	Chloramphenicol (34 ug/mL)
ORF Nucleotide Sequence:	The ORF insert of this clone is exactly the same as(RC212136).
Restriction Sites:	SgfI-MluI
Cloning Scheme:	

Cloning sites used for ORF Shuttling:



* The last codon before the Stop codon of the ORF.

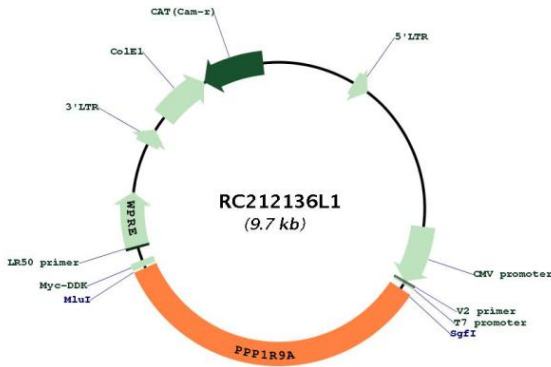
ACCN:	NM_017650
ORF Size:	3294 bp



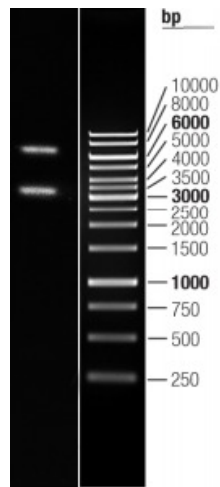
[View online >](#)

OTI Disclaimer:	The molecular sequence of this clone aligns with the gene accession number as a point of reference only. However, individual transcript sequences of the same gene can differ through naturally occurring variations (e.g. polymorphisms), each with its own valid existence. This clone is substantially in agreement with the reference, but a complete review of all prevailing variants is recommended prior to use. More info
OTI Annotation:	This clone was engineered to express the complete ORF with an expression tag. Expression varies depending on the nature of the gene.
Components:	The ORF clone is ion-exchange column purified and shipped in a 2D barcoded Matrix tube containing 10ug of transfection-ready, dried plasmid DNA (reconstitute with 100 ul of water).
Reconstitution Method:	<ol style="list-style-type: none">1. Centrifuge at 5,000xg for 5min.2. Carefully open the tube and add 100ul of sterile water to dissolve the DNA.3. Close the tube and incubate for 10 minutes at room temperature.4. Briefly vortex the tube and then do a quick spin (less than 5000xg) to concentrate the liquid at the bottom.5. Store the suspended plasmid at -20°C. The DNA is stable for at least one year from date of shipping when stored at -20°C.
RefSeq:	NM_017650.2 , NP_060120.2
RefSeq Size:	9705 bp
RefSeq ORF:	3297 bp
Locus ID:	55607
UniProt ID:	Q9ULJ8
Cytogenetics:	7q21.3
Protein Families:	Druggable Genome
MW:	123.2 kDa
Gene Summary:	This gene is imprinted, and located in a cluster of imprinted genes on chromosome 7q12. This gene is transcribed in both neuronal and multiple embryonic tissues, and it is maternally expressed mainly in embryonic skeletal muscle tissues and biallelically expressed in other embryonic tissues. The protein encoded by this gene includes a PDZ domain and a sterile alpha motif (SAM). It is a regulatory subunit of protein phosphatase I, and controls actin cytoskeleton reorganization. Alternatively spliced transcript variants encoding different isoforms have been found for this gene. [provided by RefSeq, Oct 2009]

Product images:



Circular map for RC212136L1



Double digestion of RC212136L1 using SgfI and MluI