

## Product datasheet for RC212136

### Neurabin 1 (PPP1R9A) (NM\_017650) Human Tagged ORF Clone

#### Product data:

Product Type:	Expression Plasmids
Product Name:	Neurabin 1 (PPP1R9A) (NM_017650) Human Tagged ORF Clone
Tag:	Myc-DDK
Symbol:	Neurabin 1
Synonyms:	Neurabin-I; NRB1; NRBI
Mammalian Cell Selection:	Neomycin
Vector:	pCMV6-Entry (PS100001)
E. coli Selection:	Kanamycin (25 ug/mL)
ORF Nucleotide Sequence:	>RC212136 representing NM_017650 Red=Cloning site Blue=ORF Green=Tags(s)

TTTTGTAATACGACTCACTATAGGGCGGCCGGAATTCGTCGACTGGATCCGGTACCGAGGAGATCTGCC  
GCCCGATCGCC

ATGTTGAAAAGTCTTCAGGTGAACGAACCACTCTCAGAAGTGCCTCTCCTCACAGGAATGCATATC  
GAACTGAGTTTCAGGCACTGAAAAGTACCTTTGACAAACCAAGTCAGATGGGGAACAAAAACAAAGA  
AGGTGAGGGCTCCAGCAGAGCAGGGGGAGGAAATATGGTCCAATGTCAACAGAATTAACCTATTT  
ATGCAGATGGGTATGGAACCAACGAGAATGCTGCAGTCATTGCCAAAACAAGGGGAAAGTGGACATT  
CATCTCCTCAGAGAAGAATGAAGCCAAAGAATTTCTGGAAAAACAGATGGCTCAGTTGTTAAGTTGGA  
GTCTTCTGTTTGAACGAATTAGTAGATTTGACACTATGTACGATGGCCCTTCATATCCAAAGTTCACT  
GAGACTCGAAAGATGTTTGAGAGAAGTGTGCATGAATCAGGACAGAAACAACCGCTATCCCAAAGAAAG  
AGAAAGCTGGAGGGAGTGAACCTCAGGATGAATGGGGAGGTTCCAAGTCCAACAGAGGCAGTACTGATTC  
CTTGGACAGCCTTAGCTCCCGAAGTGGGCTGTCTCCCAACTGTGAGTCAACTGAGTGCAGTATTTGAG  
AACACTGATTCTCCAGTGCCATCATTTCTGAGAAGGCTGAAAACAATGAATACTCAGTACTGGGCATT  
ATCCCTTGAATTTACCATCTGTTACTGTTACAAATCTTGACACATTTGGTCACTGAAGGATTCTAATTC  
CTGGCCCTCTCAAACAAGCGAGGTGTTGATACAGAGGATGCTCACAAGAGTAATGCAACTCCAGTACCA  
GAAGTGGCTTCTAAAAGTACCTCTAGCTTCGATACCTGGTGAAGAGATCCAGCAGAGCAAGGAACCCG  
AGGACTCCACATCTAATCAACAGACTCCCGACAGCATTGACAAAAGATGGTCTGAAGAACCTTGTGCTGA  
AAGTAAGGCAATGCCAAAGTCCGAAATCCCTTACCACAAGGCAACTGTTAGAAGATGCTGAAGCTAAT  
TTGTTTGAAGGGAGGCAGCAAAGCAACAGAGGAAAGAACTTGCAGGTGGTGAATTCACCTCTCCTGATG  
CTTCTGCATCCAGTTGTGAAAAGAAAGTACCTGAAGATTCAAATAATTTTGTGTTCCCATGTGTACAT  
GCACAGTACTATAATGTGTATAGGGTGAAGTCCAGGTATAATTCAGACTGGGGAGAGACAGGCACTGAG  
CAGGATGAGGAGGAAGATAGTGATGAGAACAGTACTATCAGCCTGATATGGAGTACTCGGAAATTTGTTG  
GATTGCCAGAAGAAGAAGAAATCCAGCAAATAGGAAAATTAAGTTTGTAGTGTCTCTATTAAGGTTTT  
CAACACATACTCCAATGAAGACTATGACAGGAGAAATGACGAAGTTGACCCTGTGGCTGCTCAGCTGAG



[View online >](#)

TATGAACTTGAAAAACGTGTAGAAAAGCTGGAACTTTTCCAGTGGAGCTAGAGAAAAGATGAGGATGGTC  
 TTGGTATAAGTATTATTGGAATGGGTGTTGGAGCAGATGCTGGACTTGAAAAGCTGGGAATATTCGTC  
 GACAGTAACAGAAAGTGGTGTCTCAACGGGATGGCAGAATACAAGTCAATGACCAGATTGTGGAAGTG  
 GATGGAATCAGCTTGGTGGGTGTGACACAGAATTTTGCAGCAACAGTTCTCAGAAACACCAAGGGCAACG  
 TCAGATTTGTTATTGGGCGGGAAAAACAGGACAAGTGAAGCGAGGTTGCCAGTTGATAGCCAGACACT  
 GGAACAGGAGAGGCGCCAGAGAGAGCTGCTGGAACAGCACTATGCCAGTATGATGCCAGCATGACGAG  
 ACAGGAGAATATGCCACAGATGAAGAAGAAGATGAGGTAGGACCTGTCTTCTGCGCAGCATGGCCA  
 TTGAAGTCTTTGAGTGCCTGAGAATGAGGACATGTTTTCCCATCAGAACTGGACACAAGCAAGCTCAG  
 TCACAAGTTCAAAGATTGCAAAATCAAACATGCAGTTACAGAAGCAGAGATTCAAAAAATTGAAGACCAAG  
 CTGCGAGCAGCAGAAAATGAGAAAAGTGGGTGGGAACTAGAAAAAACCAACTCCAACAAAAATAGAAG  
 AGAATAAGGAAAAGTGTGAAGTTGGAAGCTACTGGATTGAGGCCAAACATTATGCCACACAGTGAA  
 TGAGCATCTCAAAGAGACTCAAAGCCAGTATCAGGCCTTGAAAAAGAAATACAACAAGGCAAGAAAGTTG  
 ATCAAGGATTTTCAACAAAAAGAGCTTGATTTTCATCAAAAGACAGGAAGCAGAAAGAAAGAAAATAGAAG  
 ATTTGAAAAAGCTCATCTTGTGGAAGTCAAGGCCTCCAAGTGGGATTAGAGATTTGGAAGCTGAGGT  
 ATTCAGGCTACTGAAGCAAAATGGGACTCAAGTTAACAATAATAACAACATCTTTGAGAGAAAGAACATCT  
 CTTGGTGAAGTCTCTAAAGGGGATACCATGGAGAACTTGATGGCAAGCAGACATCTTGCCAAGATGGCC  
 TAAGTCAAGACTTGAATGAAGCAGTCCCAGAGACAGAGCGCTGGATTCAAAAGCACTGAAAACCTGAGC  
 CCAGCTCTCTGTGAAGAACAGACGCCAGAGACCCTTAGGACAAGACTGTATGATAGTGTGATTCCACA  
 GATGGGGAGGACAGTCTAGAGAGAAAGAAATTTACCTTCAATGATGACTTCAGTCCCAGCAGTACCAGTT  
 CAGCAGACCTCAGCGGCTTAGGAGCAGAACCTAAAACACCAGGGCTCTCTCAGTCCCTAGCACTGTCATC  
 AGATGAGAGCCTGGATATGATAGATGACGAGATCCTTGATGATGGACAGTCTCCAAACACAGTCAAGTGT  
 CAGAATCGGGCCGTTCAGGAATGGAGTGTGACGAGGTTTCTCACTGGTTAATGAGCCTAAATCTGGAGC  
 AGTATGTATCTGAATTCAGTGCCTAAAACATCACTGGAGAACAGTCTGCAAGTTGGATGGAATAAAT  
 TAAGGCTCTTGGAAATGACAGCATCCAGGACCCAGCAGTGGTCAAAAAGAACTCAAGGAAATGAAGATG  
 TCTCTAGAGAAGGCTCGGAAGGCCAAGAGAAAATGAAAAACAAAGAGAAAAGCTAAGGAGAAAGGAGC  
 AAGAGCAATGCAGAGGAAGTCCAAAAGACAGAAAAGATGACGTCAACTACAGCCGAGGGTGTGGTGA  
 GCAG

ACGCGTACGCGGCCGCTCGAGCAGAAACTCATCTCAGAAGAGGATCTGGCAGCAATGATATCCTGGATT  
 ACAAGGATGACGACGATAAGGTTTAA

**Protein Sequence:**

>RC212136 representing NM\_017650  
 Red=Cloning site Green=Tags(s)

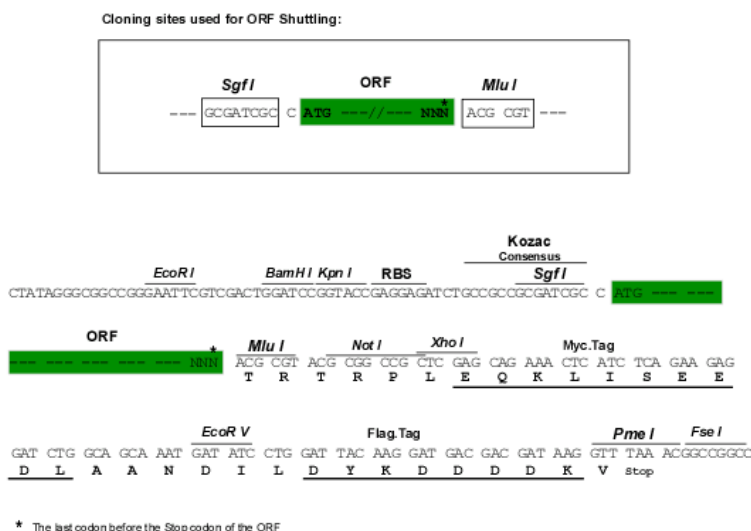
MLKTESSGERTTLRSASPHRNAYRTEFQALKSTFDKPKSDGEQKKEGEGSQSRGRKYGSNNRIKRLF  
 MQMGMENPENA AVIAKTRGKGGHSSPQRRMKPKEFLEKTDGVSVKLESSVSERISRFDTMYDGPYSKFT  
 ETRKMFERSVHESGQNNRYSPPKKEKAGGSEPQDEWGGSKSNRGTDSLDSLSSRTEAVSPTVSQLSAVFE  
 NTDSPSAI ISEKAENNEYSVTGHYPLNLPSTVTNLDTFGHLKDSNSWPPSNKRGVDTEDAHKSNATPVP  
 EVASKSTSLASIPGEEIQQSKEPEDSTSNQTPDSDIDKDGPEEPCAESKAMPKSEIPSPQSQLLEDAEAN  
 LVGREAAKQQRKELAGGDFTPDASASSCGKEVPEDSNNFDGSHVYMHSDYNVYRVSRYNSDWGETGTE  
 QDEEEDSDENSYQPDMEYSEIVGLPEEEEEIPANRKIKFSSAPIKVFNTYSNEDYDRRNDEVPVAASAE  
 YELEKRVKLELFPVELEKDEDGLGISIIGMGVADAGLEKLGIFVKTVTEGGAAQRDGRIVNDQIVEV  
 DGISLVGVTQNF AATVLRNTKGNVRFVIGREKPGQVSEVAQLISQTLQERRQRELLQHYAQYDADDE  
 TGEYATDEEEDVGPVLPDSDMAIEVFELPENEDMFSPSELDTSKLSHKFKELQIKHAVTEAEIQKLT  
 LQAENKVRWELEKTLQONIEENKERMKLESYWIEAQTLCHTVNEHLKETQSQYQALEKKYKAKKL  
 IKDFQQKELDFIKRQEAERKKIEDLEKAHLVEVQGLQVRIRDLEAEVFRLLKQNGTQVNNNNNIFERRTS  
 LGEVSKGDTMENLDGKQTSQDGLSQDLNEAVPETERLDSKALKTRAQLSVKNRRQRPSRTRLYDSVSST  
 DGEDSLERKNFTFNDDFSPSSTSSADLSGLGAEPKTPGLSQSLALSSDES LDMIDDEILDGQSPKHSQC  
 QNRAVQEWVSVQVSHWLSLNLEQYVSEFSAQNITGEQLLQLDGNLKLALGMTASQDRAVVKKLLKEMKM  
 SLEKARKAQEKMEKQREKLRRKEQEQMRKSKKTEKMTSTTAEGAGEQ

TRTRPLEQKLISEEDLAANDILDYKDDDDKV

Chromatograms: [https://cdn.origene.com/chromatograms/mg2704\\_f03.zip](https://cdn.origene.com/chromatograms/mg2704_f03.zip)

Restriction Sites: SgfI-MluI

Cloning Scheme:



ACCN: NM\_017650

ORF Size: 3294 bp

OTI Disclaimer: The molecular sequence of this clone aligns with the gene accession number as a point of reference only. However, individual transcript sequences of the same gene can differ through naturally occurring variations (e.g. polymorphisms), each with its own valid existence. This clone is substantially in agreement with the reference, but a complete review of all prevailing variants is recommended prior to use. [More info](#)

OTI Annotation: This clone was engineered to express the complete ORF with an expression tag. Expression varies depending on the nature of the gene.

Components: The ORF clone is ion-exchange column purified and shipped in a 2D barcoded Matrix tube containing 10ug of transfection-ready, dried plasmid DNA (reconstitute with 100 ul of water).

- Reconstitution Method:
1. Centrifuge at 5,000xg for 5min.
  2. Carefully open the tube and add 100ul of sterile water to dissolve the DNA.
  3. Close the tube and incubate for 10 minutes at room temperature.
  4. Briefly vortex the tube and then do a quick spin (less than 5000xg) to concentrate the liquid at the bottom.
  5. Store the suspended plasmid at -20°C. The DNA is stable for at least one year from date of shipping when stored at -20°C.

RefSeq: [NM\\_017650.2](#), [NP\\_060120.2](#)

RefSeq Size: 9705 bp

RefSeq ORF: 3297 bp

Locus ID: 55607

UniProt ID: [Q9ULJ8](#)

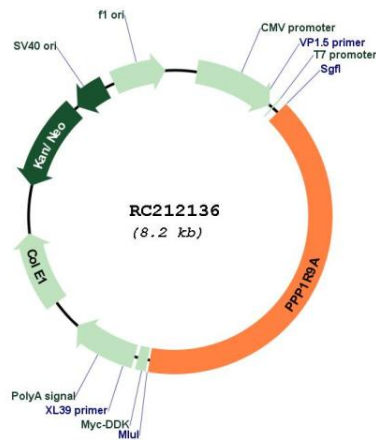
Cytogenetics: 7q21.3

Protein Families: Druggable Genome

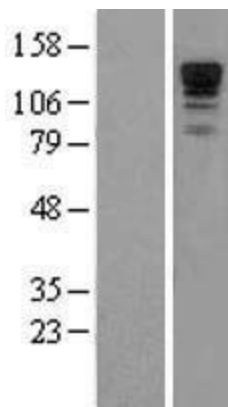
MW: 123.2 kDa

**Gene Summary:** This gene is imprinted, and located in a cluster of imprinted genes on chromosome 7q12. This gene is transcribed in both neuronal and multiple embryonic tissues, and it is maternally expressed mainly in embryonic skeletal muscle tissues and biallelically expressed in other embryonic tissues. The protein encoded by this gene includes a PDZ domain and a sterile alpha motif (SAM). It is a regulatory subunit of protein phosphatase I, and controls actin cytoskeleton reorganization. Alternatively spliced transcript variants encoding different isoforms have been found for this gene. [provided by RefSeq, Oct 2009]

**Product images:**



Circular map for RC212136



Western blot validation of overexpression lysate (Cat# [LY413648]) using anti-DDK antibody (Cat# [TA50011-100]). Left: Cell lysates from untransfected HEK293T cells; Right: Cell lysates from HEK293T cells transfected with RC212136 using transfection reagent MegaTran 2.0 (Cat# [TT210002]).