

Product datasheet for **RC212123**

PRRT3 (NM_207351) Human Tagged ORF Clone

Product data:

Product Type:	Expression Plasmids
Product Name:	PRRT3 (NM_207351) Human Tagged ORF Clone
Tag:	Myc-DDK
Symbol:	PRRT3
Mammalian Cell Selection:	Neomycin
Vector:	pCMV6-Entry (PS100001)
E. coli Selection:	Kanamycin (25 ug/mL)



[View online »](#)

ORF Nucleotide
Sequence:

>RC212123 representing NM_207351.
Blue=ORF Red=Cloning site Green=Tag(s)

GCTCGTTTAGTGAACCGTCAGAATTTTGTAAACGACTCACTATAGGGCGGCCGGGAATTCGTGACTG
GATCCGGTACCGAGGAGATCTGCCGCC**CGGATCGCC**
ATGGCCTCCAGCCATGGGGCTGTGTATGTGGCCTTCTGCTGTTGCTGCTGCCACTCCTGGGGACTGGC
CTTGCCCTGGGGAGGGCTTTCCAGGCCACTTAAAACTCCGAAATCCCTATGATCCCTGGAGCCAC
CCCAAGGGCTCTGTGGGCTCAGAGCCCCAGGCCTTTGACGTGTTCCCGGAGAACCCAGAGCTGACAGT
CACAGGAAGTCTGATGTCCGCCACGCCCTGCTGAAGAGATGCCTGAGAAGCCTGTAGCCTCTCCCTT
GGCCAGCCCTGTACGGGCCAAAGCAGCACAAGGAGCTCAGAGAGAAGCAGCTCCAGTAAGTATGAC
CTCCAGATGGCTCAAGGACCAAGCTCCACGGCTGGACAGGACCTCTGGACTCACAAGAGCTTCTGCAG
CAAGAAGCAGTGGCTCCCAACCCAGTGGGCCACCCTCATCTCACTTTTATCCCACTCCAGACGT
CAACTCAGGGTAGCCACAGTTCCTCCCTCCCTGCAGCATGAAGGCCAAGAGGGACAGTGGCCACCTAGA
GATGAGGGTCTGAAGGCCAAAATAAGAGCAGGGTCCCACCCACTTCTCCCTCAGACCACAGGGCCCA
CCCCACACCTTGTTCCTCACTCAGGACTGTCAAGAGGCCAGTGTGGAAGGACAGGGTGGGTTTGG
GAACACTTGCAGGAGGCAGCTCAAGGTCCCACTTCAACCCAGCAGGATCCAGCAGCCCTGATGTTGGC
TCAGTACCCCAAGTTGAGGTGGTACTCTCAGGAGCCAGGGGCCAGCCAGACTTGGCATTGGCCAGA
AGCCTTCTCCTGCTGAGGAGCTGCCGGTTGAGACCCCAAGAGGGCTGGCGCTGAGGTGTCTGGGAA
GTCAGTCCCCAGGTCCCCGCCAAGCAGGCTGACCTTCTGACGCTAAGGATTCACCAGGACCCAG
CCCACGGATCCACCCGCCTCAGAGGCTCCTGATCGGCCGTCTAAGCCAGAGAGAGCAGCAATGAATGGA
GCAGACCCATCTCCCCCAGCGGTGAGAGGAGCTGTGGAGGCCAGGCACCCCAAGTCTCTCATC
CCTGGTCCCTCAGACCTGGCCAGCTGTAAACCGAACAGAGAGCCCCATGGGGCCCTGCAGCCAGAT
GAAGCCGAGGAGTGGCCGGGGCGCCCCAAAGCCATCCCCAGCACCCCAAGTCCAGGCCCTCGACG
TCACGCCGGGCCCTATTGAGTACACAGCAGCGAGCCCTGGGCCAGCCTCCCTCCGGAGCCCAAC
GCCAGCTCCATGGCTTACGCCCAAGCCTCCAGCCCCAGCCAACGCCACTGCACCCCGCTACGCTGG
GGCCCCCTTCGGCGGGTCTGAGCTTCTCCTGGGAGCTGCACGTCTACGGGTGGGGTACTCTTTCTG
CTGCCCGCTTGTGGCGCTGGCTGCGCTGGCAGCCGCCAGCAGGGCCCCGGCTGGCATTGGTGGCC
GCGGTGCTGGTCTGTGGCTTCGGCGCTGCGATCCGCCATCATGCTTACCGACCCTTACGGCTCGCAG
GCGCGGTGGGCTTCGGGGGGCTGGTGTCTACAACCTGCCCTTCCCTTGTGCTTACGGCGCTG
GCAGCCCTGACTCTGCTCGCCTGGGCGGGGGTGGCCACCCTGCAAAACCCACTCCTGCTGGGA
GCAGTGGCGCTGGTGCATGGTGTAGGGTTGCTCGCGACAGACCTGCTGTCCACATGGTCTGTGCTAAC
CTCCTGACGCAGGGCTTGTGCTGCGCTGGGGCGCGCCGTGGCTCTGGGCACGCTCTGCCTGTGCCGT
CGCCGCTGCTGGACGGCCACGGGGTGGGATGCCAGCCGGGCCCTCGGCTGTTGGCTGTGGCGGGC
GCGCTGGGGTGTGGTAGCGGCTTGCAGTGGCGGTGCGCTCTGGCTGTACCCGGGCCAGGCCGC
GTGGGCCGCTTCTCGTGGGCTGGTGGGGTGTCCACTTCTGGCTGCGCCTCCTGGAGTGACATGGGCG
CTCGCCCTGGCGTTGGCCGCGGTGGTGGCCGAGACCCAGGCCGCCACGGAGCACGCTTGTGGGCT
AAGCTGATGCGTCTGGCGTGCCCGCGCGTCAAGAAAGAGCGAGGTGCCGGAGCGACCAATAACTGC
TATGACGGGCCAGCAACGTTGGTGCAGGACGTTGGACATCAGCAAGAGCCTCATCCGCAACCCGGCG
GAGAGTGGGCAGCTGGCCACGCCAGTTCAGGGCCTGGGGCTCGGCTGCGTCTGGTGGTGGCGGACCC
CAGGGTGGCCCGGACTGTCCCGCAACGGTGTGGGACCGCGCCATCGCTGAGCGAGTGGATCTGCGG
CCGCCATCGCCATCAACCTGAGCCGACGATCGACGCCGCTCTTCCGCGAGCACCTAGTGCAGAC
AGTGTGTTCCAGCGCTGCGGCTCCGCGGCTGGCTCCCGCGCCTGGAGGCGCTCTGCGGCCGCGC
CGGGCAGCCATCCAAAGCCGAGCTCGACGACGCTGGCTCCTCGCTCCTCCGCGCCGCTGCAGGTG
CTCAGCGAGTGCAGTGCAGGCGGGTCCCACAGCAGTGTGGAAGCACCCGAGGGGACGGCGCT
GCGGCTTCTGGCAGCTCCCTCGACAGTCTCCAGGGTTCACTAAGATCAGTTGGAACCCCTGGCGC
CACGGGCTGTATCAGTGGACAGTCTGCCCTAGATGAGTTGCCAGCACGGTACAGCTACTGCCTGCC
CCGACCCAGCCCTGATTCTACCGCCGCTCGGCAGGGGACGGCCAGGGAGAGGTTCCAGCCGCGCGC
AAGCCTGGGAATCCCGCAGCGCTCCAGTGATACCATCGAGCTT
ACGCGTACGCGGGCGCTCGAGCAGAACTCATCTCAGAAGAGGATCTGGCAGCAAATGATATCCTGGAT
TACAAGGATGACGACGATAAGGTTAAACGGCCGGC

Protein Sequence: >Peptide sequence encoded by RC212123
 Blue=ORF Red=Cloning site Green=Tag(s)

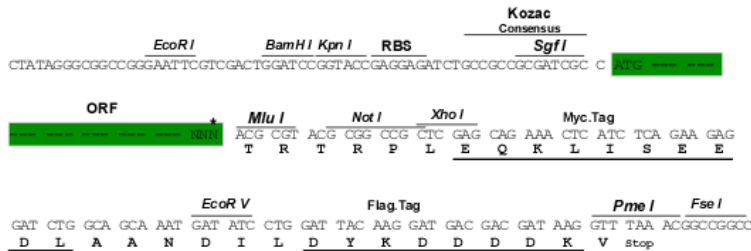
MASSPWGCVCGLLLLLLPLLTGTGPALGRGFPRPLENSEIPMIPGAHPKGSVSGSEPAFDVFPENPRADS
 HRNSDVRHAPAEEMPEKPVASPLGPALYGPKAAQGAQRERLPVTDDLQMAQGPSSHGWTGPLDSQELLQ
 QEAVAPHVPGHPHLTFIPTTPRRQLRVATVPPSLQHEGQEGQWPPRDEGLKAKTKSRVPPPTSPSDHQGP
 PHTLVSHSGTVKRPVLEGGQGFEEHLQEAAQGPHTTQQDPAAPDVGSVPPVEVVYSQEPGAQPDALAR
 SLPPAEELPVETPKRAGAEVSEVSSPGPPKQADLPDAKDSGPGQPTDPPASEAPDRPSKPERAAMNG
 ADPISPOQRVRGAVEAPGTPKSLIPGSPDPGPAVNRTESPMGALQPDEAEWPGRPQSHPPAPPVQAPST
 SRRGLIRVTTQRALGQPPPEPTASSMASAPASSPPANATAPPLRWGPLRRVLSFSELHVVYGVGLFL
 LPALLAALAAAPAGPRLALVAAVLVLVASALRSAYMLTDPYGSQARLVGRGGLVLYNLPFLLLTAAL
 AALTLGLGAGLPPPLQNPLLLGAVALVHGVGLLATDLLSTWSVLNLLTQGLSCAWGAVALGTLCLCR
 RRLLDGPRGWDASPGPRLAVAGALGLLASGLQLAAALWLYPGGRVGRFSWAWWGVHFWLRLELTTWA
 LALALAATAAARPRPTEHACWAKMLRACAPSGKSEVPERPNNCYAGPSNVGAGSLDISKSLIRNPA
 ESGQLATPSSGAWGSAASLRGPGQGGPLSRNGVGPAPSLSELDLRPPSPINLSRSDAALFREHLVRD
 SVFQRCGLRGLASPPGGALRPRRGSHPKAELDDAGSSLLRGRCSRSLSDVRVGRVVPQHVVEAPDAAA
 AAGSSLDSESRGSLKISWNPWRHGLSSVDSLPLDELPTVQLLPAPTPAPDSTAAARQDGGQGEVQPRG
 KPGESRSASSDTIEL
 TRTRPLEQKLISEEDLAANDILDYKDDDDKV

Chromatograms: https://cdn.origene.com/chromatograms/mk8014_b11.zip

Restriction Sites: SgfI-MluI

Cloning Scheme:

Cloning sites used for ORF Shuttling:

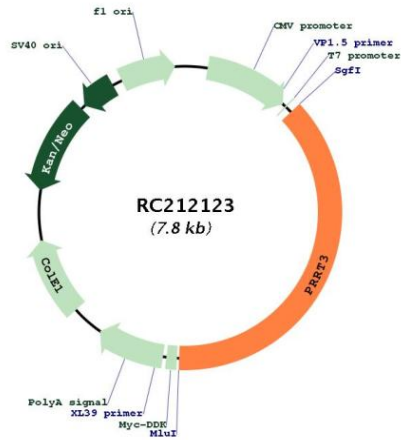


* The last codon before the Stop codon of the ORF

ACCN: NM_207351

ORF Size:	2943 bp
OTI Disclaimer:	<p>Due to the inherent nature of this plasmid, standard methods to replicate additional amounts of DNA in E. coli are highly likely to result in mutations and/or rearrangements. Therefore, OriGene does not guarantee the capability to replicate this plasmid DNA. Additional amounts of DNA can be purchased from OriGene with batch-specific, full-sequence verification at a reduced cost. Please contact our customer care team at custsupport@origene.com or by calling 301.340.3188 option 3 for pricing and delivery.</p> <p>The molecular sequence of this clone aligns with the gene accession number as a point of reference only. However, individual transcript sequences of the same gene can differ through naturally occurring variations (e.g. polymorphisms), each with its own valid existence. This clone is substantially in agreement with the reference, but a complete review of all prevailing variants is recommended prior to use. More info</p>
OTI Annotation:	This clone was engineered to express the complete ORF with an expression tag. Expression varies depending on the nature of the gene.
Components:	The ORF clone is ion-exchange column purified and shipped in a 2D barcoded Matrix tube containing 10ug of transfection-ready, dried plasmid DNA (reconstitute with 100 ul of water).
Reconstitution Method:	<ol style="list-style-type: none"> 1. Centrifuge at 5,000xg for 5min. 2. Carefully open the tube and add 100ul of sterile water to dissolve the DNA. 3. Close the tube and incubate for 10 minutes at room temperature. 4. Briefly vortex the tube and then do a quick spin (less than 5000xg) to concentrate the liquid at the bottom. 5. Store the suspended plasmid at -20°C. The DNA is stable for at least one year from date of shipping when stored at -20°C.
RefSeq:	NM_207351.5
RefSeq Size:	3415 bp
RefSeq ORF:	2946 bp
Locus ID:	285368
UniProt ID:	Q5FWE3
Cytogenetics:	3p25.3
Protein Families:	Transmembrane
MW:	102.2 kDa

Product images:



Circular map for RC212123