

Product datasheet for **RC212120**

HLAF (HLA-F) (NM_001098479) Human Tagged ORF Clone

Product data:

Product Type:	Expression Plasmids
Product Name:	HLAF (HLA-F) (NM_001098479) Human Tagged ORF Clone
Tag:	Myc-DDK
Symbol:	HLAF
Synonyms:	CDA12; HLA-5.4; HLA-CDA12; HLAF
Mammalian Cell Selection:	Neomycin
Vector:	pCMV6-Entry (PS100001)
E. coli Selection:	Kanamycin (25 ug/mL)



[View online »](#)

ORF Nucleotide Sequence:

>RC212120 representing NM_001098479
 Red=Cloning site Blue=ORF Green=Tags(s)

TTTTGTAATACGACTCACTATAGGGCGGCCGGGAATTCGTCGACTGGATCCGGTACCGAGGAGATCTGCC
 GCC**CGGATCGCC**

ATGGCGCCCCGAAGCCTCCTCTGCTGCTCTCAGGGCCCTGGCCCTGACCGATACTTGGCGGGCTCCC
 ACTCCTTGAGGATTTTCAGCACCGCTGTGTCGCGGCCCGGCCGCGGGAGCCCCGTACATCGCCGTGGA
 GTACGTAGACGACACGCAATTCCTGCGGTTTCGACAGCGACGCGCGATTCCGAGGATGGAGCCGCGGAG
 CCGTGGGTGGAGCAAGAGGGGCCGAGTATTGGGAGTGGACCACAGGGTACGCCAAGGCCAACGCACAGA
 CTGACCGAGTGGCCCTGAGGAACCTGCTCCGCCGCTACAACCAGAGCGAGGCTGGGTCTCACACCCTCCA
 GGGAAATGAATGGCTGCGACATGGGGCCCGACGGACGCCTCTCCGCGGTATCACCAGCACGCGTACGAC
 GGCAAGGATTACATCTCCCTGAACGAGGACCTGCGCTCCTGGACCGCGCGGACACCGTGGCTCAGATCA
 CCCAGCGCTTCTATGAGGCAGAGGAATATGAGAGGAGTTCAGGACCTACCTGGAGGGCGAGTGCCTGGA
 GTTGCTCCGAGATACTTGGAGAATGGGAAGGAGACGCTACAGCGCGCAGATCCTCAAAGGCACACGTT
 GCCCACCACCCATCTCTGACCATGAGGCCACCCTGAGGTGCTGGGCCCTGGGCTTCTACCTGCGGAGA
 TCACGCTGACCTGGCAGCGGGATGGGGAGGAACAGACCCAGGACACAGAGCTTGTGGAGACCAGGCTGC
 AGGGATGGAACCTTCCAGAAGTGGGCCCTGTGGTGGTGCCTCCTGGAGAGGAACAGAGATACACATGC
 CATGTGCAGCAGAGGGGCTGCCCCAGCCCTCATCTGAGATGGGAGCAGTCTCCCCAGCCACCATCC
 CCATCGTGGGCATCGTTGCTGGCCTTGTGTCTTGGAGCTGTGGTCACTGGAGCTGTGGTGCCTGCTGT
 GATGTGGAGGAAGAAGAGCTCAGATAGAAACAGAGGGAGCTACTCTCAGGCTGCAGCCTACTCAGTGGTC
 AGCGGAAACTTGATGATAACATGGTGGTCAAGCTTATTTCTCCTGGGGTGTCTTCAAAGGATATTTGG
 GCTGCCTCCGGAGTCACAGTGTCTTGGGCCCGCGGAAGGTGGGTGACATGTGGATCTGTTTTTTTTGTG
 GCTGTGGACATCTTCAACACTGCCTTCTGGCCTTGCAAGCCTTCGCTTGGCTTCGGCTTAGGAGG
 GGCAGGAGCTTCTTCTGTTCTTGGCACCATCTTATGAAAAGGTCCAGATTAAGATTTTTGAC

AG**CGGACCG**ACGCGTACGCGGCCGCTCGAGCAGAACTCATCTCAGAAGAGGATCTGGCAGCAAATGATATCC
 TGGATTACAAGGATGACGACGATAAGGTTAA

Protein Sequence:

>RC212120 representing NM_001098479
 Red=Cloning site Green=Tags(s)

MAPRLLLLL SGALAL TDTWAGSHSLRYFSTAVSRPGRGEPRIAVEYVDDTQFLRFDSDAAI PRMEPRE
 PWVEQEGPQYWEWTTGYAKANAQTDRVALRNLLRRYNQSEAGSHTLQGMNGCDMGPDRLLRGYHQHAYD
 GKDYISLNEDLRSWTAADTVAQITQRFYEAEEYAEFRYLEGECELELLRRYLENGKETLQRADPPKAHV
 AHHPISDHEATLRWALGFYPAEITLTWQRDGEETQDTEL VETRPAGDGTQKWA AVVVPVPGEEQRYTC
 HVQHEGLPQPLILRWEQSPQPTIPVIGIVAGLVVLGAVVTGAVVA VMWRKKS SDRNRGYSQAAAYSVV
 SGNLMITWSSLFLLGVLFQGYLGCLRSHSVLGRRKVGD MWILF FLWLWTSFNTAFLALQSLRFGFGFR
 GRSFLLRSWHMLMKRVQIKIFD

SGPTRTRRLEQKLI SEEDLAANDILDYKDDDDKV

Chromatograms:

https://cdn.origene.com/chromatograms/mk8060_b12.zip

Restriction Sites:

Sgfl-RsrII

Cloning Scheme:


ACCN: NM_001098479

ORF Size: 1326 bp

OTI Disclaimer: The molecular sequence of this clone aligns with the gene accession number as a point of reference only. However, individual transcript sequences of the same gene can differ through naturally occurring variations (e.g. polymorphisms), each with its own valid existence. This clone is substantially in agreement with the reference, but a complete review of all prevailing variants is recommended prior to use. [More info](#)

OTI Annotation: This clone was engineered to express the complete ORF with an expression tag. Expression varies depending on the nature of the gene.

Components: The ORF clone is ion-exchange column purified and shipped in a 2D barcoded Matrix tube containing 10ug of transfection-ready, dried plasmid DNA (reconstitute with 100 ul of water).

Reconstitution Method:

1. Centrifuge at 5,000xg for 5min.
2. Carefully open the tube and add 100ul of sterile water to dissolve the DNA.
3. Close the tube and incubate for 10 minutes at room temperature.
4. Briefly vortex the tube and then do a quick spin (less than 5000xg) to concentrate the liquid at the bottom.
5. Store the suspended plasmid at -20°C. The DNA is stable for at least one year from date of shipping when stored at -20°C.

RefSeq: [NM_001098479.2](#)

RefSeq Size: 1591 bp

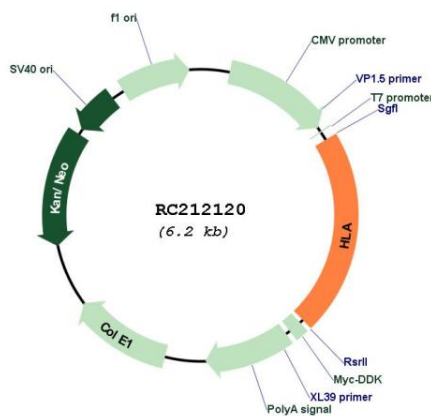
RefSeq ORF: 1329 bp

Locus ID: 3134

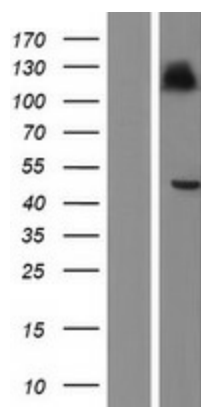
UniProt ID: [P30511](#)

Cytogenetics: 6p22.1

Protein Families:	Transmembrane
Protein Pathways:	Allograft rejection, Antigen processing and presentation, Autoimmune thyroid disease, Cell adhesion molecules (CAMs), Endocytosis, Graft-versus-host disease, Type I diabetes mellitus, Viral myocarditis
MW:	50.44 kDa
Gene Summary:	This gene belongs to the HLA class I heavy chain paralogues. It encodes a non-classical heavy chain that forms a heterodimer with a beta-2 microglobulin light chain, with the heavy chain anchored in the membrane. Unlike most other HLA heavy chains, this molecule is localized in the endoplasmic reticulum and Golgi apparatus, with a small amount present at the cell surface in some cell types. It contains a divergent peptide-binding groove, and is thought to bind a restricted subset of peptides for immune presentation. This gene exhibits few polymorphisms. Multiple transcript variants encoding different isoforms have been found for this gene. These variants lack a coding exon found in transcripts from other HLA paralogues due to an altered splice acceptor site, resulting in a shorter cytoplasmic domain. [provided by RefSeq, Jul 2008]

Product images:


Circular map for RC212120



Western blot validation of overexpression lysate (Cat# [LY420587]) using anti-DDK antibody (Cat# [TA50011-100]). Left: Cell lysates from untransfected HEK293T cells; Right: Cell lysates from HEK293T cells transfected with RC212120 using transfection reagent MegaTran 2.0 (Cat# [TT210002]).