

Product datasheet for **RC212118**

VSIG8 (NM_001013661) Human Tagged ORF Clone

Product data:

Product Type: Expression Plasmids
 Product Name: VSIG8 (NM_001013661) Human Tagged ORF Clone
 Tag: Myc-DDK
 Symbol: VSIG8
 Mammalian Cell Selection: Neomycin
 Vector: pCMV6-Entry (PS100001)
 E. coli Selection: Kanamycin (25 ug/mL)
 ORF Nucleotide Sequence: >RC212118 representing NM_001013661
 Red=Cloning site Blue=ORF Green=Tags(s)

TTTTGTAATACGACTCACTATAGGGCGGCCGGAATTCGTCGACTGGATCCGGTACCGAGGAGATCTGCC
 GCC**CGATCGCC**

ATGAGAGTTGGAGGAGCATTCCACCTTCTACTCGTGTGCCTGAGCCCAGCACTGCTGTCTGCTGTGCGGA
 TCAACGGGGATGGACAGGAGGTCCTGTACCTGGCAGAAGGTGATAATGTGAGGCTGGGCTGCCCTACGT
 CCTGGACCCTGAGGACTATGGTCCCAATGGGCTGGACATCGAGTGGATGCAGGTCAACTCAGACCCCGCC
 CACCACCGAGAGAACGTGTTCCCTAGTTACCAGGACAAGAGGATCAACCATGGCAGCCTTCCCCATCTGC
 AGCAGAGGGTCCGCTTTGCGCCCTCAGACCCAAGCCAGTACGATGCCTCCATCAACCTCATGAACCTGCA
 GGTATCTGATACAGCCACTTATGAGTGCCGGGTGAAGAAGACCACCATGGCCACCCGGAAGGTCAATGTCT
 ACTGTCCAAGCACGACCTGCAGTGCCCATGTGCTGGACAGAGGGCCACATGACATATGGCAACGATGTGG
 TGCTGAAGTGCTATGCCAGTGGGGCTCCAGCCCTCTCCTACAAGTGGCCAAGATCAGTGGGCACCA
 TTACCCCTATCGAGCTGGGTCTTACACCTCCAGCACAGCTACCACTCAGAGCTGTCTACCAGGAGTCC
 TTCCACAGCTCCATAAACCAAGGCTGAACAATGGGGACCTGGTGTGAAGGATATCTCCAGAGCAGATG
 ATGGGCTGTATCAGTGACAGTGGCCAACAACGTGGGCTACAGTGTGTTGTGGTGGAGGTGAAGGTCTC
 AGACTCCCGCGTATAGGCGTGATCATCGGCATCGTCTGGGCTCTCTGCTCGCGCTGGGCTGCCTGGCC
 GTAGGCATCTGGGGCTCGTCTGCTGCTGCTGCGGGGCTCCGGGCTGGCGGCGCCCGGCTGCCTTCG
 GCTACGGCAACGGCGCGGGGTGCGCGGAGGGGCTGCGGCGACTTGGCTAGTGAGATCAGAGAGGACGC
 CGTGGCGCCCGGTGCAAGGCCAGCGGGCGCGGACGCCGCTACCCACCTCCTGGGGTACCCGACGCGAG
 AACGTCAGCCGCTCCCTGCGCCGCAAGTACGCGCTCCCCCTGCGGCGGCCCGAGGACGTGGCCCTGG
 CGCCCTGCACCGCCGCGCCGCTGCGAAGCGGGCCCTCCCCGCTACGTCAAGGTCAAGAGCGCGGA
 GCCGGTACTGCGCCGAGGGGCCGGTGCAGTGAAGAACGGCCCTTGGTG

ACGCGTACGCGGCGGCTCGAGCAGAACTCATCTCAGAAGAGGATCTGGCAGCAATGATATCCTGGATT
 ACAAGGATGACGACGATAAAGGTTTAA



[View online »](#)

Protein Sequence: >RC212118 representing NM_001013661
Red=Cloning site Green=Tags(s)

MRVGGAFHLLL VCLSPALL SAVRINGDGGQEVLY LAEGDNVRLGCPYVLDPEDYGPNGLDIEWMQVNSDPA
 HHRENVFLSYQDKRINHGSLPHLQQRVRF AADPSQYDASINLMNLQVSDTATYECRVKKTMMATR KVIV
 TVQARPAVPMCWTEGHMTYGN DVVLKCYASGGSQPLSYKWAKISGHHPYRAGSYTSQHSYHSEL SYQES
 FHSSINQGLNNGDLVLKDISRADDGLYQCTVANNVGY SVCVVEVKVSDSRRI GVIIGIVLGSLLALGCLA
 VGIWGLVCCCGSGAGARGAFGYGNGGVGGGACGLASEIREDAVAPGCKASGRGSRVTHLLGYPTQ
 NVSRSLRRKYAPPPCGGPEDVALAPCTAAAACEAGSPVYVVKVSAEPADCAEGPVQCKNGLLV

TRTRPLEQKLISEEDLAANDILDYKDDDDKV

Chromatograms: https://cdn.origene.com/chromatograms/mk6097_d07.zip

Restriction Sites: SgfI-MluI

Cloning Scheme:

Cloning sites used for ORF Shuttling:



* The last codon before the Stop codon of the ORF

ACCN: NM_001013661

ORF Size: 1242 bp

OTI Disclaimer: The molecular sequence of this clone aligns with the gene accession number as a point of reference only. However, individual transcript sequences of the same gene can differ through naturally occurring variations (e.g. polymorphisms), each with its own valid existence. This clone is substantially in agreement with the reference, but a complete review of all prevailing variants is recommended prior to use. [More info](#)

OTI Annotation: This clone was engineered to express the complete ORF with an expression tag. Expression varies depending on the nature of the gene.

Components: The ORF clone is ion-exchange column purified and shipped in a 2D barcoded Matrix tube containing 10ug of transfection-ready, dried plasmid DNA (reconstitute with 100 ul of water).

Reconstitution Method:

1. Centrifuge at 5,000xg for 5min.
2. Carefully open the tube and add 100ul of sterile water to dissolve the DNA.
3. Close the tube and incubate for 10 minutes at room temperature.
4. Briefly vortex the tube and then do a quick spin (less than 5000xg) to concentrate the liquid at the bottom.
5. Store the suspended plasmid at -20°C. The DNA is stable for at least one year from date of shipping when stored at -20°C.

Note: Plasmids are not sterile. For experiments where strict sterility is required, filtration with 0.22um filter is required.

RefSeq: [NM_001013661.1](#), [NP_001013683.1](#)

RefSeq Size: 1818 bp

RefSeq ORF: 1245 bp

Locus ID: 391123

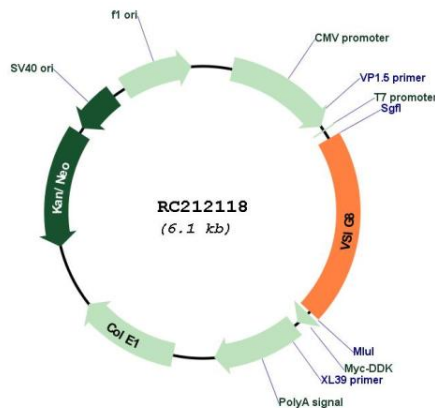
UniProt ID: [Q5VU13](#)

Cytogenetics: 1q23.2

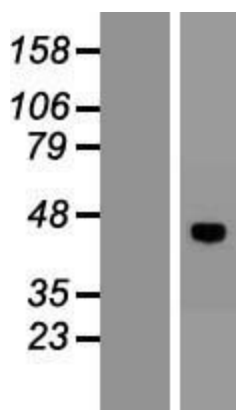
Protein Families: Transmembrane

MW: 43.7 kDa

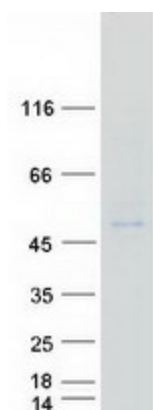
Product images:



Circular map for RC212118



Western blot validation of overexpression lysate (Cat# [LY423010]) using anti-DDK antibody (Cat# [TA50011-100]). Left: Cell lysates from untransfected HEK293T cells; Right: Cell lysates from HEK293T cells transfected with RC212118 using transfection reagent MegaTran 2.0 (Cat# [TT210002]).



Coomassie blue staining of purified VSIG8 protein (Cat# [TP312118]). The protein was produced from HEK293T cells transfected with VSIG8 cDNA clone (Cat# RC212118) using MegaTran 2.0 (Cat# [TT210002]).