

Product datasheet for **RC212116**

RBM12 (NM_006047) Human Tagged ORF Clone

Product data:

Product Type:	Expression Plasmids
Product Name:	RBM12 (NM_006047) Human Tagged ORF Clone
Tag:	Myc-DDK
Symbol:	RBM12
Synonyms:	HRIHFB2091; SCZD19; SWAN
Mammalian Cell Selection:	Neomycin
Vector:	pCMV6-Entry (PS100001)
E. coli Selection:	Kanamycin (25 ug/mL)



[View online »](#)

**ORF Nucleotide
Sequence:**

>RC212116 representing NM_006047
 Red=Cloning site Blue=ORF Green=Tags(s)

TTTTGTAATACGACTCACTATAGGGCGGCCGGAATTCGTCGACTGGATCCGGTACCGAGGAGATCTGCC
 GCC**CGCATCGCC**

ATGGCTGTGGTACCCGTTTGAAGGTCTCCCAATTGTGGCGGGGACCATGGACATTCGCCACTTCTTCT
 CTGGATTGACCATTCTGATGGGGCGTGCATATTGTAGGGGGTGAAGTGGTGAAGGCTTTCATCGTTTT
 TGCCACTGATGAAGATGCAAGGCTTGGTATGATGCGCACAGGTGGTACAATTAAGGGTCAAAGTAAACA
 CTATTGTTGAGTAGTAAGACGGAATGCAGAATATGATTGAAGTGAAGTGAAGGCTTTCATCGTTTT
 ACTTAGATATACCACCAGCAAATGCCAGTAGATCAGGACCACCACCTAGCTCAGGAATGAGTAGCAGGGT
 AAAGTGGCCACAACAGTATCCAACCTTAATAATCCATCACCCAGTGTAGTTACTGCCACCACCTTCTGTT
 CATGAAAGCAACAAAACATACAGACATTTCCACAGCCAGCGTAGGAACAGCTCCTCAAATATGGGGG
 CTTCTTTGGGAGCCCAACGTTTAGCTCAACTGTTCCAAGCACAGCTCTCCAATGAACACAGTCCCGCC
 GCCACCAATTCCTCAATTCAGCGATGCCATCTCTGCCACCAATGCCATCCATTCACCAATTCAGTT
 CCTCTCCAGTACCTACATTGCCTCCTGTGCCTCCTGTGCCCCGATTCCCCAGTTCCTTCTGTGCCAC
 CCATGACCCCACTGCCACCCATGTCCGGCATGCCGCCCTTGAATCCGCCACCTGTGGCACCTTACCTGC
 TGGAAATGAATGGCTCTGGAGCACCTATGAATTTGAACAATAATCTGAATCCTATGTTTCTTGGTCCGTTG
 AATCCTGTTAACCTATCCAGATGAAGTCTCAGAGCAGTGTGAAGCCACTCCCATCAACCTGATGATC
 TGTATGTCAGTGTGCATGGAATGCCCTTTCTGCAATGGAAAATGATGTCAGAGATTTTTTTCATGGGCT
 CCGTGTGATGCAGTGCATTTGTTGAAAGATCATGTAGGTCGAAAATGATGGAATGGATTGGTTAAGTTT
 CTCTCCCTCAAGATACATTTGAAGCTTTGAAACGAAACAGAATGCTGATGATTCACGCTATGTGGAAG
 TTAGCCCTGCCACAGAAAGACAGTGGTGTGCTGGAGCCATATCATTTTAAGCAAAAATATGGGACC
 TTCTGGACAAAACATCCCTCCTCAGACACTTCCAGGTCAAATCGCCAGTGGGCAGAAAAGATCA
 AGGTCAAGATCACACATGAGGCTGGTTTTTGTGTTTACTTGAAGGGCTACCATTTGAAGCAGAAAACA
 AACATGTCATTGATTTTTTAAAAAGCTGGATATTGTGGAAGATAGTATTTATATAGCTTATGGACCCAA
 TGGGAAAGCAACTGGCGAAGGCTTTGTAGAGTTCAGAAATGAGGCTGACTATAAGGCTGCTCTGTGTCGT
 CATAAACAGTACATGGGCAATCGCTTTATTCAAGTTCATCAATTAAGAAAGGTATGCTAGAAAAGA
 TAGATATGATTCGAAAAGACTGCAGAACTTCAGCTATGACCAGAGGGAAATGATACTAAATCCAGAGGG
 GGATGTCAACTCTGCCAAAGTCTGTGCCACATAACAAAATATCCATTACAGCATTACAAAGATGGATGTT
 CTTAGTTCCTAGAAAGGAATCCAGTGGATGAAAATGCTGTACATGTTCTTGTGATAACAAATGGGCAAG
 GTCTAGGACAGGATTGGTTTCAAGTAAAGATGATGCAGTAAGTCTGAACGCTTACACCGTAA
 AAACTTAATGGGAGAGAAGCTTTTGTTCATGTAGTTACCTAGAAGATATGAGAGAGATTGAGAAAAAT
 CCCCTGCCCAAGGAAAAAGGGATTAAGATGCCTGTGCCAGGTAATCCTGCAGTTCAGGAATGCCCA
 ATGCGGGACTGCCGGTGTGGGACTGCCAGTGCAGGACTTCCCGGTGCAGGCTGCCAGCACAGGACT
 GCCTGGTTCAGCAATAACCAGTGCAGGACTGCCTGGTGCAGGAAATGCCAGTGCAGGAATACCTAGTGCA
 GGAGGTGAAGAGCATGCCTTCTGACTGTAGGATCAAAGGAAGCAATAATGGGCTCCATTTAACTTTC
 CTGGTAATTTTGGTGGATCAAATGCCTTTGGGCCACCAATCCCTCCTCCAGGATTAGGAGCGGGGCTT
 TGGTGTGCTAGGCTGGTATGCCTTCAGTTGGAACAGTGGTTTGCCTGGTCTAGGACTGGATGTTCCG
 GGTTTTGGAGGTGGACCAACAATTTAAGTGGCCATCGGGATTTGGAGGGGGCCCTCAGAATTTTGAA
 ATGGCCCTGGTAGCTTAGGCGGTCCCGGGGTTTGAAGTGGCCCTCCTGGTCTTGAAGTGGCCCTGG
 GCATTTGGGTGGGCCACCAGCTTTTGGGCTGGCCCCGGCCCCGGCCCTGGCCCAATCCATATT
 GGTGGTCCCCTGGCTTTGCATCTAGTTCTGGAACCAGGACGACAGTAATTAAGTGCAAAACATGC
 CCTTACTGTGTCTATTGATGAGATTTAGATTTCTTTATGGCTATCAAGTAATCCAGGCTCAGTGTG
 TTTAAAATACAATGAAAAGGTATGCCACAGGTGAAGCCATGGTGGCTTTGAGTCTCGGGATGAAGCC
 ACAGCTGTCTCATTGACTTAAATGACAGGCTATAGGTTCAAGAAAAGTAAAACCTGTATTAGGG

ACGCGTACGCGGCCGCTCGAGCAGAAACTCATCTCAGAAGAGGATCTGGCAGCAAATGATATCCTGGATT
 ACAAGGATGACGACGATAAAGTTTAA

Protein Sequence: >RC212116 representing NM_006047
 Red=Cloning site Green=Tags(s)

MAVVIRLQGLPIVAGTMDIRHFFSGLTIPDGGVHIVGGELGEAFIVFATDEDARLGMMRTGGTIKGSKVT
 LLLSSKTEMQNMIELSRRRFETANLDIPPANASRSGPPPSSGMSSRVNLPPTVSNFNPNPSPSVVTATTSV
 HESNKNIQTFSTASVGTAPPNMGASFGSPTFSSTVPSTASPMNTVPPPIPPAMPPLPMPSPIPPV
 PPPVPTLPPVPPVPPIPPVPSVPPMTPLPPMSGMPPLNPPPVAPLPAGMNGSGAPMNLNNLNPMFLGPL
 NPVNPIQMNSQSSVKPLPINPDDL YVSVHGMPPFSAMENDVRDFFHGLRVDVHLLKDHVGRNNGNGLVKF
 LSPQDTEALKRNRMLMIQRYVEVSPATERQWVAAGGHITFKQNMGPSGQTHPPQTLPRSKSPSQKRS
 RSRSPHEAGFCVYLKGLPFEAENKHVIDFFKKLDIVEDSIYIAYGPNKATGEGFVEFRNEADYKAALCR
 HKQYMGNRFIQVHPITKKGMLEKIDMIRKRLQNF SYDQREMILNPEGDVNSAKVCAHITNIPFSITKMDV
 LQFLEGI PV DENAVHVLVDNNGQGLGQALVQFKNEDDARKSERLHRKKNGREAFVHVVTLEDMREIEKN
 PPAQGGKGLKMPVPGNPVPGMPNAGLPGVGLPSAGLPGAGLPSTGLPGSAITSAGLPGAGMPSAGIPSA
 GGEEHAFLTVGSKEANNGPPFNFGNFGGSNAFGPPIPPPGLGGGAFGDARPGMPVSGNSGLPGLGLDVP
 FGGGGPNL SGPSGFGGGPQNFNGPGSLGGPPGFGSGPPGLGSAPGHLGGPPAFGP GP GP GP GPIHI
 GGPPGFASSSGKPGPTVIK VQNMPFTV SID EILDFFYGYQVIPGSVCLKYNEKGMPTGEAMVAFESRDEA
 TAAVIDLNDRPIGSRKVKLVLG

TRTRPLEQKLISEEDLAANDILDYKDDDDKV

Chromatograms: https://cdn.origene.com/chromatograms/mk6566_f04.zip

Restriction Sites: SgfI-MluI

Cloning Scheme:

Cloning sites used for ORF Shuttling:



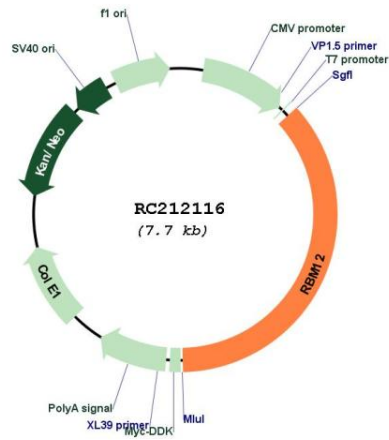
* The last codon before the Stop codon of the ORF

ACCN: NM_006047

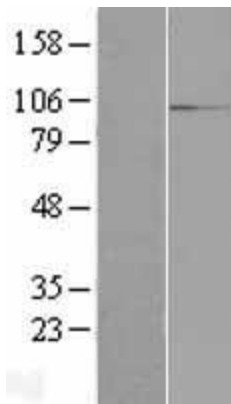
ORF Size: 2796 bp

OTI Disclaimer:	The molecular sequence of this clone aligns with the gene accession number as a point of reference only. However, individual transcript sequences of the same gene can differ through naturally occurring variations (e.g. polymorphisms), each with its own valid existence. This clone is substantially in agreement with the reference, but a complete review of all prevailing variants is recommended prior to use. More info
OTI Annotation:	This clone was engineered to express the complete ORF with an expression tag. Expression varies depending on the nature of the gene.
Components:	The ORF clone is ion-exchange column purified and shipped in a 2D barcoded Matrix tube containing 10ug of transfection-ready, dried plasmid DNA (reconstitute with 100 ul of water).
Reconstitution Method:	<ol style="list-style-type: none"> 1. Centrifuge at 5,000xg for 5min. 2. Carefully open the tube and add 100ul of sterile water to dissolve the DNA. 3. Close the tube and incubate for 10 minutes at room temperature. 4. Briefly vortex the tube and then do a quick spin (less than 5000xg) to concentrate the liquid at the bottom. 5. Store the suspended plasmid at -20°C. The DNA is stable for at least one year from date of shipping when stored at -20°C.
RefSeq:	NM_006047.6
RefSeq Size:	6640 bp
RefSeq ORF:	2799 bp
Locus ID:	10137
UniProt ID:	Q9NTZ6
Cytogenetics:	20q11.22
Domains:	RRM
MW:	97.2 kDa
Gene Summary:	This gene encodes a protein that contains several RNA-binding motifs, potential transmembrane domains, and proline-rich regions. This gene and the gene for copine I overlap at map location 20q11.21. Alternative splicing in the 5' UTR results in four transcript variants. All variants encode the same protein. [provided by RefSeq, Nov 2010]

Product images:



Circular map for RC212116



Western blot validation of overexpression lysate (Cat# [LY416900]) using anti-DDK antibody (Cat# [TA50011-100]). Left: Cell lysates from untransfected HEK293T cells; Right: Cell lysates from HEK293T cells transfected with RC212116 using transfection reagent MegaTran 2.0 (Cat# [TT210002]).