

Product datasheet for RC212111

DNALI1 (NM_003462) Human Tagged ORF Clone

Product data:

Product Type: Expression Plasmids
Product Name: DNALI1 (NM_003462) Human Tagged ORF Clone
Tag: Myc-DDK
Symbol: DNALI1
Synonyms: dj423B22.5; hp28; P28
Mammalian Cell Selection: Neomycin
Vector: pCMV6-Entry (PS100001)
E. coli Selection: Kanamycin (25 ug/mL)
ORF Nucleotide Sequence: >RC212111 representing NM_003462
Red=Cloning site Blue=ORF Green=Tags(s)

TTTTGTAATACGACTCACTATAGGGCGCCGGGAATTCGTCGACTGGATCCGGTACCGAGGAGATCTGCC
GCC**CGATCGCC**

ATGGTGACGGCAAACAAGGCCACACTGGACAGGGCAGCTGCTGGGTGCTACTCTCGCTCCGCCATGA
TTCCGCCCGCAGACTCTTTGCTCAAGTACGACACCCAGTGTGGTGAGCCGGAACCGGAGAAACGGAG
CCCCAAGGCTCGGCTACTGAAAGTCAGCCCCAGCAGCTGGACCTTCAGGTTAGCCCCACAGCCACCC
AAGACCAAGCTCCCCTCACTCCCTGTGTCCAGATCCTACAAAGCAGGCAGAAGAAATCTGAATGCCA
TACTACCCCAAGGGAGTGGGTGGAAGACACGCAGCTATGGATCCAGCAGGTGTCCAGCACCCCTAGCAC
CAGGATGGACGTGGTGCACCTCCAGGAGCAGTTAGACTTAAAGCTGCAGCAGCGCAGGCCAGGGAAACA
GGCATCTGCCCTGTCCGAGGAACTCTACTCACAGTGTGTTGATGAGTTGATCCGGGAGGTCACCATCA
ACTGTGCGGAGAGGGGGCTGCTGCTGCTGCGAGTCCGGGACGAGATCCGCATGACCATCGCTGCCTACCA
GACCCTGTACGAGAGCAGCGTGGCGTTTGGCATGAGGAAGGCACTGCAGGCTGAGCAGGGGAAGTCAGAC
ATGGAGAGGAAAATCGCAGAATTGGAGACGAAAAGAGAGACCTGGAGAGGCAAGTGAACGAGCAGAAGG
CAAAATGTGAAGCCACTGAGAAGCGGGAGAGCGGAGAGCGGCAGGTGGAGGAGAAGAAGCACAATGAGGA
GATTGAGTCTGAAGCGAACAATCAGCAGCTGAAGGCCAACTGGAAGGCATTATTGCACCAAGAAG

ACGCGTACGCGGCCGCTCGAGCAGAACTCATCTCAGAAGAGGATCTGGCAGCAAATGATATCCTGGATT
ACAAGGATGACGACGATAAGGTTTAA



[View online »](#)

Protein Sequence: >RC212111 representing NM_003462
Red=Cloning site Green=Tags(s)

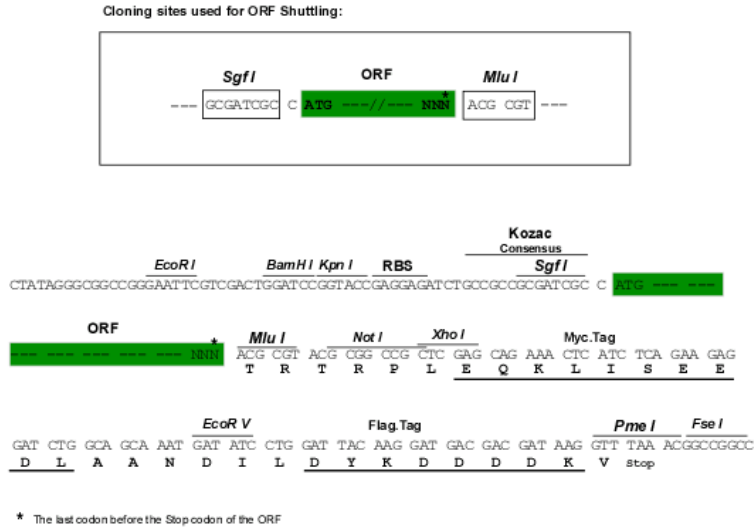
MVTANKAHTGQGSCWVATLASAMIPPADSLLKYDTPVLVSRNTEKRSPKARLLKVSPPQPGPSGAPQPP
 KTKLPSTPCVDPPTKQAEELNAILPPREWEDTQLWIQQVSSSTPSTRMDVVHLQEQLDLKLQQRQARET
 GICPVRRRELYSQCFDELIREVTINCAERGLLLLVRVDEIRMTIAAYQTL YESSVAFGMRKALQAEQKSD
 MERKIAELETEKRDLERQVNEQKAKCEATEKRESERRQVEEKHNEEIQFLKRTNQQLKAQLEGIAPKK

TRTRPLEQKLISEEDLAANDILDYKDDDDKV

Chromatograms: https://cdn.origene.com/chromatograms/mk8026_g04.zip

Restriction Sites: SgfI-MluI

Cloning Scheme:



ACCN: NM_003462

ORF Size: 840 bp

OTI Disclaimer: The molecular sequence of this clone aligns with the gene accession number as a point of reference only. However, individual transcript sequences of the same gene can differ through naturally occurring variations (e.g. polymorphisms), each with its own valid existence. This clone is substantially in agreement with the reference, but a complete review of all prevailing variants is recommended prior to use. [More info](#)

OTI Annotation: This clone was engineered to express the complete ORF with an expression tag. Expression varies depending on the nature of the gene.

Components: The ORF clone is ion-exchange column purified and shipped in a 2D barcoded Matrix tube containing 10ug of transfection-ready, dried plasmid DNA (reconstitute with 100 ul of water).

Reconstitution Method:

1. Centrifuge at 5,000xg for 5min.
2. Carefully open the tube and add 100ul of sterile water to dissolve the DNA.
3. Close the tube and incubate for 10 minutes at room temperature.
4. Briefly vortex the tube and then do a quick spin (less than 5000xg) to concentrate the liquid at the bottom.
5. Store the suspended plasmid at -20°C. The DNA is stable for at least one year from date of shipping when stored at -20°C.

RefSeq: [NM_003462.3](#), [NP_003453.2](#)

RefSeq Size: 2663 bp

RefSeq ORF: 777 bp

Locus ID: 7802

UniProt ID: [O14645](#)

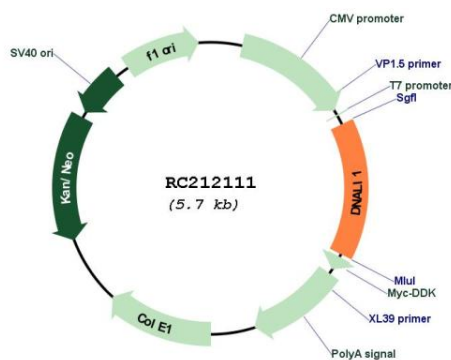
Cytogenetics: 1p34.3

Protein Pathways: Huntington's disease

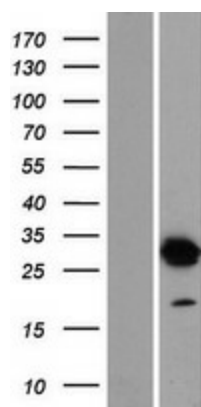
MW: 31.7 kDa

Gene Summary: This gene is the human homolog of the Chlamydomonas inner dynein arm gene, p28. The precise function of this gene is not known, however, it is a potential candidate for immotile cilia syndrome (ICS). Ultrastructural defects of the inner dynein arms are seen in patients with ICS. Immotile mutant strains of Chlamydomonas, a biflagellated algae, exhibit similar defects. [provided by RefSeq, Jul 2008]

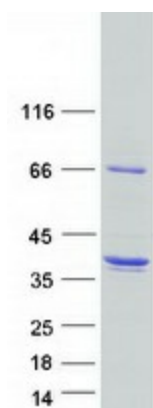
Product images:



Circular map for RC212111



Western blot validation of overexpression lysate (Cat# [LY418664]) using anti-DDK antibody (Cat# [TA50011-100]). Left: Cell lysates from untransfected HEK293T cells; Right: Cell lysates from HEK293T cells transfected with RC212111 using transfection reagent MegaTran 2.0 (Cat# [TT210002]).



Coomassie blue staining of purified DNALI1 protein (Cat# [TP312111]). The protein was produced from HEK293T cells transfected with DNALI1 cDNA clone (Cat# RC212111) using MegaTran 2.0 (Cat# [TT210002]).