

Product datasheet for RC212099

ARF1 (NM_001024228) Human Tagged ORF Clone

Product data:

Product Type: Expression Plasmids
Product Name: ARF1 (NM_001024228) Human Tagged ORF Clone
Tag: Myc-DDK
Symbol: ARF1
Synonyms: PVNH8
Mammalian Cell Selection: Neomycin
Vector: pCMV6-Entry (PS100001)
E. coli Selection: Kanamycin (25 ug/mL)
ORF Nucleotide Sequence: >RC212099 ORF sequence
 Red=Cloning site Blue=ORF Green=Tags(s)

TTTTGTAATACGACTCACTATAGGGCGCCGGGAATTCGTCGACTGGATCCGGTACCGAGGAGATCTGCC
 GCC**CGATCGCC**

ATGGGGAACATCTTCGCAACCTCTCAAGGGCCTTTTTGGCAAAAAGAAATGCGCATCCTCATGGTGG
 GCCTGGATGCTGCAGGGAAGACCACGATCCTCTACAAGCTTAAGCTGGGTGAGATCGTGACCACCATTC
 CACCATAGGCTTCAACGTGGAACCGTGGAGTACAAGAACATCAGCTTCACTGTGTGGGACGTGGGTGGC
 CAGGACAAGATCCGGCCCTGTGGCCACTACTCCAGAACACACAAGGCTGATCTTCGTGGTGGACA
 GCAATGACAGAGAGCGTGTGAACGAGGCCCGTGAAGGAGCTCATGAGGATGCTGGCCGAGGACGAGCTCCG
 GGATGCTGTCTCCTGGTTCGCAACAAGCAGGACCTCCCAACGCCATGAATGCGGCCGAGATCACA
 GACAAGCTGGGGCTGCACTCACTACGCCACAGGAAGTGGTACATTCAGGCCACCTGCGCCACCAGCGGCG
 ACGGGCTCTATGAAGGACTGGACTGGCTGTCCAATCAGCTCCGGAACCAGAAG

ACGCGTACGCGGCCGCTCGAGCAGAACTCATCTCAGAAGAGGATCTGGCAGCAAATGATATCCTGGATT
 ACAAGGATGACGACGATAAGGTTTAA

Protein Sequence: >RC212099 protein sequence
 Red=Cloning site Green=Tags(s)

MGNIFANLFGKLFGKEMRILMVGLDAAGKTTILYKLLKGEIVTTIPTIGFNVETVEYKNISFTVWDVGG
 QDKIRPLWRHYFQNTQGLIFVVDSDNDRERVNEAREELMRMLAEDEL RDAVLLVFANKQDLPNAMNAEIT
 DKLGLHSLRHRNWIQATCATSGDGLYEGLDWSNQLRNQK

TRTRPLEQKLISEEDLAANDILDYKDDDDKV

Chromatograms: https://cdn.origene.com/chromatograms/mk6419_c05.zip



Restriction Sites: SgfI-MluI

Cloning Scheme:



ACCN: NM_001024228

ORF Size: 543 bp

OTI Disclaimer: The molecular sequence of this clone aligns with the gene accession number as a point of reference only. However, individual transcript sequences of the same gene can differ through naturally occurring variations (e.g. polymorphisms), each with its own valid existence. This clone is substantially in agreement with the reference, but a complete review of all prevailing variants is recommended prior to use. [More info](#)

OTI Annotation: This clone was engineered to express the complete ORF with an expression tag. Expression varies depending on the nature of the gene.

Components: The ORF clone is ion-exchange column purified and shipped in a 2D barcoded Matrix tube containing 10ug of transfection-ready, dried plasmid DNA (reconstitute with 100 ul of water).

Reconstitution Method:

1. Centrifuge at 5,000xg for 5min.
2. Carefully open the tube and add 100ul of sterile water to dissolve the DNA.
3. Close the tube and incubate for 10 minutes at room temperature.
4. Briefly vortex the tube and then do a quick spin (less than 5000xg) to concentrate the liquid at the bottom.
5. Store the suspended plasmid at -20°C. The DNA is stable for at least one year from date of shipping when stored at -20°C.

RefSeq: [NM_001024228.2](#)

RefSeq Size: 1998 bp

RefSeq ORF: 546 bp

Locus ID: 375

UniProt ID: [P84077](#)

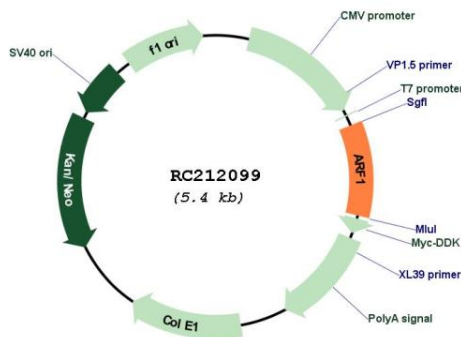
Cytogenetics: 1q42.13

Protein Pathways: Vibrio cholerae infection

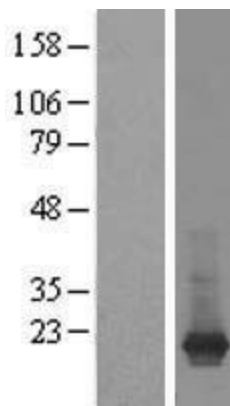
MW: 20.7 kDa

Gene Summary: ADP-ribosylation factor 1 (ARF1) is a member of the human ARF gene family. The family members encode small guanine nucleotide-binding proteins that stimulate the ADP-ribosyltransferase activity of cholera toxin and play a role in vesicular trafficking as activators of phospholipase D. The gene products, including 6 ARF proteins and 11 ARF-like proteins, constitute a family of the RAS superfamily. The ARF proteins are categorized as class I (ARF1, ARF2 and ARF3), class II (ARF4 and ARF5) and class III (ARF6), and members of each class share a common gene organization. The ARF1 protein is localized to the Golgi apparatus and has a central role in intra-Golgi transport. Multiple alternatively spliced transcript variants encoding the same protein have been found for this gene. [provided by RefSeq, Jul 2008]

Product images:



Circular map for RC212099



Western blot validation of overexpression lysate (Cat# [LY422627]) using anti-DDK antibody (Cat# [TA50011-100]). Left: Cell lysates from untransfected HEK293T cells; Right: Cell lysates from HEK293T cells transfected with RC212099 using transfection reagent MegaTran 2.0 (Cat# [TT210002]).