

## Product datasheet for **RC212097**

### EPS15 (NM\_001981) Human Tagged ORF Clone

#### Product data:

Product Type:	Expression Plasmids
Product Name:	EPS15 (NM_001981) Human Tagged ORF Clone
Tag:	Myc-DDK
Symbol:	EPS15
Synonyms:	AF-1P; AF1P; MLLT5
Mammalian Cell Selection:	Neomycin
Vector:	pCMV6-Entry (PS100001)
E. coli Selection:	Kanamycin (25 ug/mL)



[View online »](#)

ORF Nucleotide  
Sequence:

>RC212097 representing NM\_001981  
Red=Cloning site Blue=ORF Green=Tags(s)

TTTTGTAATACGACTCACTATAGGGCGGCCGGGAATTCGTGCGACTGGATCCGGTACCGAGGAGATCTGCC  
GCCGCGATCGCC

ATGGCTGCGGCGGCCAGCTCTCTGACACAGTTATCAAGTGGGAATCCTGTATATGAAAAACTATA  
GACAGGTTGATACAGGCAATACTGGAAGGGTGTGGCTTCTGATGCTGCTGCTTTCTGAAAAATCAGG  
GCTTCCAGACTTGATACTTGAAAGATTTGGGATTTAGCCGACACAGATGGCAAAGGTATCCTGAACAAA  
CAAGAATCTTTGTTGCTTTCGCTCTTGTGGCATGTGCCAGAATGGATTGGAAGTTTCACTAAGTAGTT  
TGAACCTGGCTGTTCTCCACCAAGATTTATGATACCAGTAGTCCTTTGCTAATCAGTGGAACTCTGC  
AGCTGAGCTCCCATGGGCTGTAACCTGAAGATAAGGCCAAATATGATGCAATATTTGATAGTTTAAAGC  
CCAGTGAATGGATTTCTGTCTGGTGATAAAGTGAACCAAGTGTGCTCAACTCTAAGTTACCTGTGGATA  
TCCTTGAAGAGTTTGGGAGTTGAGTGATTTGACCATGATGGAATGCTTGACAGAGATGAGTTTGCAGT  
TGCCATGTTTTTGGTATACTGTGCACTGGAGAAAGAACCTGTGCCAATGTCTTGCTCCAGCCTTGGTG  
CCACCATCTAAGAGAAAAACGTGGGTGTATCCCTGCAGAAAAAGCTAAATATGATGAAATCTTCTCTGA  
AACTGATAAAGATATGGACGGATTTGTGTCTGGATTGGAGGTCCGTGAAATATCTTGAACAGGTTT  
ACCTTCTACCTTACTAGCCCATATATGGTCATTATGCGACACAAAGGACTGTGGGAAGCTTTCAAAGGAT  
CAGTTTGCCTTGGCTTTTCACTTAATCAGTCAGAAGTTAATCAAGGGCATTGATCCTCCTCACGTTCTTA  
CTCCTGAAATGATTCCACCATCAGACAGGGCCAGTTTACAAAAGAATCATAGGATCAAGTCTGTTGC  
AGATTTCTCTGCTATTAAGGAAGTAGATACTCTTAACAATGAAATAGTTGACCTACAGAGGGAAAAGAA  
AATGTGGAACAGGACCTTAAGGAGAAGGAAGATACTATTAACAGAGGACAAGTGAGGTTTCAAGTCTTC  
AAGATGAAGTTCAAAGGGAGAATACTAATCTGCAAAAACTACAGGCCAGAAAACAGCAGGTACAGGAACT  
CCTTGATGAACTGGATGAGCAGAAAAGCCAGCTGGAGGAGCAACTCAAGGAAGTCAGAAAAGAAATGTGCT  
GAGGAGGCCCAACTGATCTCTTCTGAAAAGCTGAATTAAGTGTGAGGAAATCGCAGATCTCCACTTACG  
AAGAAGAATTGGCAAAAGCTAGAGAAGAGCTGAGCCGTCTACAGCAAGAAAACAGCAGAAATGGAGGAGAG  
TGTAGAGTCAGGGAAGGCTCAGTTGGAACCTCTCAGCAGCACCTACAAGATTCACAACAGGAAATAGT  
TCAATGCAAAAGAACTGATGGAATGAAAGATTTGGAAAATCATAATAGTCAGTTAAATGGTGCAGTA  
GCCACACAGCATTCTTGTAAACGGAGCTACAGATTATTGCAGCCTCAGCACCAGCAGCAGTGAACAGC  
CAACCTTAATGAACATGTTGAAGGCCAGAGCAACCTAGAGTCTGAGCCCATACACCAGGAATCTCCAGCA  
AGAAGTAGTCTGAACTACTGCCTTCTGGTGTGACTGATGAAAAAGAGTACTACAGCTGTTACTGAAA  
AAGTTTGTCTGAACTCGACAATAATAGACATTCAAAAGAGGAAGATCCATTTAATGTAGACTCAAGTTC  
GCTGACAGGTCCAGTTGCAGATACAAAAGTGGATTTTTCCAGTCTGATCCTTTTGTGGCAGTATCCT  
TTCAAGGATGATCCTTTTGGAAAATCGATCCATTTGGTGGTATCCTTTCAAAGGTTTCAAGTCCATTTG  
CATCAGACTGTTTCTCAGGCAATCTACTGATCCTTTTGGCACTTCAAGCACTGACCCTTTCAGTGCAGC  
CAACAATAGCAGTATTACATCGGTAGAAACGTTGAAGCACAATGATCCTTTTGTCTCTGGTGAACAGTT  
GTTGCAGCAAGCGATTACGCCACAGACCCTTTGCTTCTGTTTTGGGAATGAATCATTTGGAGGTGGAT  
TTGCTGACTTACGACATTGTCAAAGGTCAACAATGAAGATCCTTTTCTGTTTCAAGCAGCAGTCTGT  
CAGCAACGTAGTGATTACAAAAATGTATTTGAGGAAACATCGGTCAAAGTGAAGTGAACCCCAAGCA  
CTGCCACCAAGATCGGAACTCCAACAAGACCCTGCCCTTACCACCTGGGAAAAGATCCATCAACAAAT  
TGGATTCTCTGATCCCTTTAAACTGAATGATCCATTTAGCCTTTCCAGGCAACGATAGCCCCAAAGA  
AAAAGATCCTGAAATATTTGTGATCCATTCACTTCTGCTACTACCACTACCAATAAAGAGGCTGATCCA  
AGCAATTTTGGCAACTTCAAGTCTTATCCCTCTGAAGAAGATAATGATCGAATGGGCCAAGAGGGAAAGTG  
AGAGAGAGGAAGAGCAGAGGCTTGGCCGACTAAATCAGCAGGAACAAGAAGACTTAGAACTGGCTATTGC  
ACTCAGCAATCTGAGATATCAGAAGCA

ACGCGTACGCGGCCGCTCGAGCAGAAAACCTCATCTCAGAAGAGGATCTGGCAGCAATGATATCCTGGATT  
ACAAGGATGACGACGATAAGGTTTAA

Protein Sequence: >RC212097 representing NM\_001981  
 Red=Cloning site Green=Tags(s)

MAAAAQLSLTQLSSGNPVYEKYYRQVDTGNTGRVLASDAAFLKKSGLPDLILGKIWDLADTDGKGI LNK  
 QEFFVALRLVACAQNGLEVSLSSLNLAVPPPRFHDTSPLLISGTSAELPWAVKPEDKAKYDAIFDLSL  
 PVNGFLSGDKVKPVLLNSKLPVDILGRVWELSDIDHDGMLDRDEFAMFLVYCALEKEPVMSLPPALV  
 PPSKRKTWVVSAPAEKAKYDEIFLKTDKMDGFVSGLEVREIFLKTGLPSTLLAHIWSLCDTKDCGKLSKD  
 QFALAFHLISQKLIKIDPPHVLTPMIPPDRASLQKNII GSSPVADFSAIKELDTLNNEIVDLQREKN  
 NVEQDLKEKEDTIKQRTSEVQDLQDEVQRENTLQKLQAQKQVQELDELDEQKAQLEEQLKEVRKKA  
 EEAQLISSLKAELTSQESQISTYEEELAKAREEL SRLQQETAEEESVESGKAQLEPLQQHLQDSQQEIS  
 SMQMKLMEMKDLNHNSQLNWCSSPHSILVNGATDYCSLSTSSSETANLNEHVEGQSNLESEPIHQESPA  
 RSSPELLPSGVTDENEVTTAVTEKVCSELNDRHSKEEDPFNVDSSSLTGPVADTNLDFQSDPFVGS DP  
 FKDDPFKIDPFGGDPFKGSDPFASDCFFRQSTDPFATSSTDPFSAANNSSITSVETLKHNDPFAPGGTV  
 VAASDSATDPFASVFGNESFGGFADFSTLSKVNNDPFRSATSSVSNVITKNVFEETS VKSEDEPPA  
 LPPKIGTPTRPCPLPPGKRSINKLSDPDPFKLNDPFQPFPGNDSPKEKDP EIFCDPFTSATTTTTNKEADP  
 SNFANFSAYPSEEDMIEWAKRESEREEEQRLARLNQEQEDLELAIALSKSEISEA

TRTRPLEQKLISEEDLAANDILDYKDDDDKV

Chromatograms: [https://cdn.origene.com/chromatograms/mg2802\\_f01.zip](https://cdn.origene.com/chromatograms/mg2802_f01.zip)

Restriction Sites: SgfI-MluI

Cloning Scheme:

Cloning sites used for ORF Shuttling:

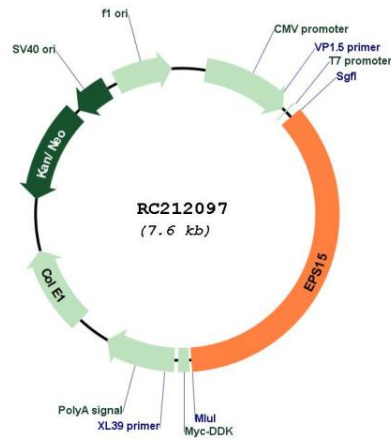


\* The last codon before the Stop codon of the ORF

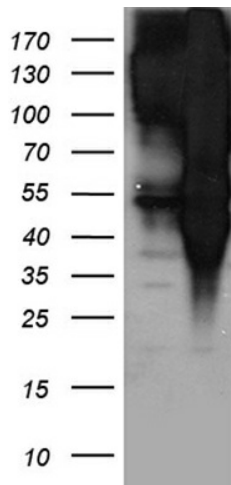
ACCN: NM\_001981

<b>ORF Size:</b>	2688 bp
<b>OTI Disclaimer:</b>	The molecular sequence of this clone aligns with the gene accession number as a point of reference only. However, individual transcript sequences of the same gene can differ through naturally occurring variations (e.g. polymorphisms), each with its own valid existence. This clone is substantially in agreement with the reference, but a complete review of all prevailing variants is recommended prior to use. <a href="#">More info</a>
<b>OTI Annotation:</b>	This clone was engineered to express the complete ORF with an expression tag. Expression varies depending on the nature of the gene.
<b>Components:</b>	The ORF clone is ion-exchange column purified and shipped in a 2D barcoded Matrix tube containing 10ug of transfection-ready, dried plasmid DNA (reconstitute with 100 ul of water).
<b>Reconstitution Method:</b>	<ol style="list-style-type: none"><li>1. Centrifuge at 5,000xg for 5min.</li><li>2. Carefully open the tube and add 100ul of sterile water to dissolve the DNA.</li><li>3. Close the tube and incubate for 10 minutes at room temperature.</li><li>4. Briefly vortex the tube and then do a quick spin (less than 5000xg) to concentrate the liquid at the bottom.</li><li>5. Store the suspended plasmid at -20°C. The DNA is stable for at least one year from date of shipping when stored at -20°C.</li></ol>
<b>RefSeq:</b>	<a href="#">NM_001981.3</a>
<b>RefSeq Size:</b>	5220 bp
<b>RefSeq ORF:</b>	2691 bp
<b>Locus ID:</b>	2060
<b>UniProt ID:</b>	<a href="#">P42566</a>
<b>Cytogenetics:</b>	1p32.3
<b>Domains:</b>	EH, EFh
<b>Protein Families:</b>	Druggable Genome
<b>Protein Pathways:</b>	Endocytosis
<b>MW:</b>	98.5 kDa
<b>Gene Summary:</b>	This gene encodes a protein that is part of the EGFR pathway. The protein is present at clatherin-coated pits and is involved in receptor-mediated endocytosis of EGF. Notably, this gene is rearranged with the HRX/ALL/MLL gene in acute myelogenous leukemias. Alternative splicing results in multiple transcript variants encoding distinct isoforms. [provided by RefSeq, May 2009]

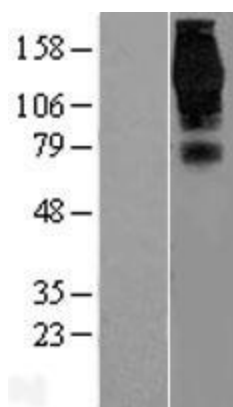
Product images:



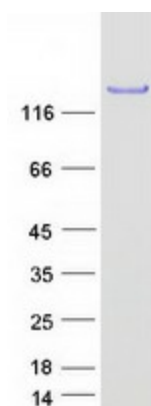
Circular map for RC212097



HEK293T cells were transfected with the pCMV6-ENTRY control (Cat# [PS100001], Left lane) or pCMV6-ENTRY EPS15 (Cat# RC212097, Right lane) cDNA for 48 hrs and lysed. Equivalent amounts of cell lysates (5 ug per lane) were separated by SDS-PAGE and immunoblotted with anti-EPS15 antibody (Cat# [TA890119]). Positive lysates [LY419614] (100ug) and [LC419614] (20ug) can be purchased separately from OriGene.



Western blot validation of overexpression lysate (Cat# [LY419614]) using anti-DDK antibody (Cat# [TA50011-100]). Left: Cell lysates from untransfected HEK293T cells; Right: Cell lysates from HEK293T cells transfected with RC212097 using transfection reagent MegaTran 2.0 (Cat# [TT210002]).



Coomassie blue staining of purified EPS15 protein (Cat# [TP312097]). The protein was produced from HEK293T cells transfected with EPS15 cDNA clone (Cat# RC212097) using MegaTran 2.0 (Cat# [TT210002]).