

Product datasheet for RC212086

KCNRG (NM_199464) Human Tagged ORF Clone

Product data:

Product Type:	Expression Plasmids
Product Name:	KCNRG (NM_199464) Human Tagged ORF Clone
Tag:	Myc-DDK
Symbol:	KCNRG
Synonyms:	DLTET
Mammalian Cell Selection:	Neomycin
Vector:	pCMV6-Entry (PS100001)
E. coli Selection:	Kanamycin (25 ug/mL)
Restriction Sites:	SgfI-MluI
Cloning Scheme:	

Cloning sites used for ORF Shuttling:



* The last codon before the Stop codon of the ORF

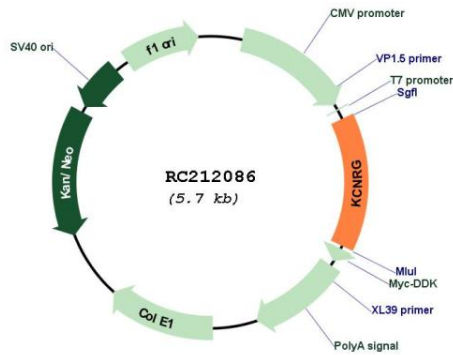
ACCN:	NM_199464
ORF Size:	687 bp



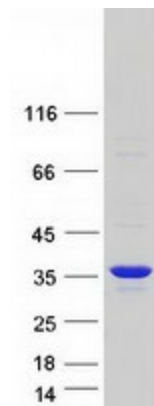
[View online >](#)

OTI Disclaimer:	The molecular sequence of this clone aligns with the gene accession number as a point of reference only. However, individual transcript sequences of the same gene can differ through naturally occurring variations (e.g. polymorphisms), each with its own valid existence. This clone is substantially in agreement with the reference, but a complete review of all prevailing variants is recommended prior to use. More info
OTI Annotation:	This clone was engineered to express the complete ORF with an expression tag. Expression varies depending on the nature of the gene.
Components:	The ORF clone is ion-exchange column purified and shipped in a 2D barcoded Matrix tube containing 10ug of transfection-ready, dried plasmid DNA (reconstitute with 100 ul of water).
Reconstitution Method:	<ol style="list-style-type: none">1. Centrifuge at 5,000xg for 5min.2. Carefully open the tube and add 100ul of sterile water to dissolve the DNA.3. Close the tube and incubate for 10 minutes at room temperature.4. Briefly vortex the tube and then do a quick spin (less than 5000xg) to concentrate the liquid at the bottom.5. Store the suspended plasmid at -20°C. The DNA is stable for at least one year from date of shipping when stored at -20°C.
RefSeq:	NM_199464.3
RefSeq Size:	1625 bp
RefSeq ORF:	690 bp
Locus ID:	283518
UniProt ID:	Q8N5I3
Cytogenetics:	13q14.2
MW:	25.7 kDa
Gene Summary:	This gene encodes a protein which regulates the activity of voltage-gated potassium channels. This gene is on chromosome 13 and overlaps the gene for tripartite motif containing 13 on the same strand. Multiple transcript variants encoding different isoforms have been found for this gene. [provided by RefSeq, Feb 2012]

Product images:



Circular map for RC212086



Coomassie blue staining of purified KCNRG protein (Cat# [TP312086]). The protein was produced from HEK293T cells transfected with KCNRG cDNA clone (Cat# RC212086) using MegaTran 2.0 (Cat# [TT210002]).