

## Product datasheet for **RC212084**

### **IL9R (NM\_002186) Human Tagged ORF Clone**

#### **Product data:**

Product Type:	Expression Plasmids
Product Name:	IL9R (NM_002186) Human Tagged ORF Clone
Tag:	Myc-DDK
Symbol:	IL9R
Synonyms:	CD129; IL-9R
Mammalian Cell Selection:	Neomycin
Vector:	pCMV6-Entry (PS100001)
E. coli Selection:	Kanamycin (25 ug/mL)



[View online »](#)

**ORF Nucleotide Sequence:**

>RC212084 representing NM\_002186  
 Red=Cloning site Blue=ORF Green=Tags(s)

TTTTGTAATACGACTCACTATAGGGCGGCCGGAATTCGTCGACTGGATCCGGTACCGAGGAGATCTGCC  
 GCC**CGGATCGCC**

ATGGGACTGGGCAGATGCATCTGGGAAGGCTGGACCTTGGAGAGTGAGGCCCTGAGGCGAGACATGGGCA  
 CCTGGCTCCTGGCTGCATCTGCATCTGCACCTGTGTCTGCTTGGGAGTCTCTGTACAGGGGAAGGACA  
 AGGGCCAAGGTCTAGAACCTTCACTGCCTCACCAACAACATTCTCAGGATCGATTGCCACTGGTCTGCC  
 CCAGAGCTGGGACAGGGCTCCAGCCCCTGGCTCCTTCCACCAGCAACCAGGCTCCTGGCGGCACACATA  
 AGTGCATCTTGGGGGACAGTGCACCGTCTGCTGCCACCTGAGGCAGTGTCTGCCATCTGACAA  
 TTTACCATCACTTTCCACCCTGCATGTCTGGGAGGAGCAGGTGAGCCTGGTGGACCCGGAGTACCTG  
 CCCCAGGACACGTTAAGCTGGACCCGCCCTGACTTGCAGAGCAACATCAGTTCTGGCCACTGCATCC  
 TGACCTGGAGCATCAGTCTGCCTTGGAGCCAATGACCACACTTCTCAGCTATGAGCTGGCCTTCAAGAA  
 GCAGGAAGAGGCCTGGGAGCAGGCCAGCACAGGGATCACATTGTCGGGGTGACCTGGCTTATACTTGAA  
 GCCTTTGAGCTGGACCCTGGCTTTATCCATGAGGCCAGGCTGCGTGTCCAGATGGCCACACTGGAGGATG  
 ATGTGGTAGAGGAGGAGCGTTATACAGGCCAGTGGAGTGTGGAGCCAGCCTGTGTCTCCAGGCTCC  
 CCAGAGACAAGGCCCTCTGATCCCACCCTGGGGTGGCCAGGCAACACCTTGTGTGTGTCCATCTTT  
 CTCTGTGACTGGCCGACCTACCTCCTGTTCAGCTGTGCGCCAGGGTGAAGAGAATCTTCTACCAGA  
 ACGTGCCTCTCCAGCGATGTTCTTCCAGCCCCTACAGTGTACACAATGGGAACCTCCAGACTTGGAT  
 GGGGGCCACGGGGCCGGTGTGTGTGAGCCAGGACTGTGTGGCACCCACAGGGAGCCTTGGAGCCC  
 TGCGTCCAGGAGGCCACTGCACCTGCTCACTTGTGGCCAGCGCTCCTTGGAAATCTGTGGCCCTGGAGG  
 AGGAACAGGAGGCCCTGGGACCAGGCTCCCGGGGAACCTGAGCTCAGAGGATGTGCTGCCAGAGGTTG  
 TACGGAGTGGAGGTACAGACGCTTGCCTATCTGCCACAGGAGGACTGGGCCCCACGTCCTGACTAGG  
 CCGGCTCCCCAGACTCAGAGGGCAGCAGGAGCAGCAGCAGCAGCAGCAGCAACAACAACACTACT  
 GTGCCCTGGGCTGCTATGGGGATGGCACCTCTCAGCCCTCCCAGGAAACACACAGAGCTCTGGGCCAT  
 CCCAGCCCTGGCCTGTGGCCTTCTTGTGACCATCAGGGCCTGGAGACCCAGCAAGGAGTTGCCTGGGTG  
 CTGGCTGGTCACTGCCAGAGGCCTGGGCTGCATGAGGACCTCCAGGGCATGTTGCTCCCTCTGTCTCA  
 GCAAGGCTCGGCTCTGGACATTC

**ACGCGT**ACGCGGCCGCTCGAGCAGAAACTCATCTCAGAAGAGGATCTGGCAGCAAATGATATCTGGATT  
 ACAAGGATGACGACGATAAGGTTTAA

**Protein Sequence:**

>RC212084 representing NM\_002186  
 Red=Cloning site Green=Tags(s)

MGLGRCIWEGWTLSEALRRDMGTWLLACICICTCVCLGVSVTGEGQGPSRSTFTCLTNNILRIDCHWSA  
 PELGQSSPWLLFTSNQAPGGTHKILRGSECTVVLPEAVLVPSDNFTITFHHCMSGREQVSLVDPEYL  
 PRRHVKLDPPSDLQSNISSGHCI L TWSI SPALEPMTLLSYELAFKKQEEAWEQAQRHDHIVGVTWLI  
 LE AFELDPGFIHEARLRVQMATLEDDVVEEERYTGQWSEWSQPVCFQAPQRQGPLIPPWGWPGNTLVA  
 VSIF LLLTGPTYLLFKLSPRVKRIFYQNVPSAMFFQPLYSVHNGNFQTMGAHGAGVLLSQDCAGTPQGA  
 LEPCVQEATALLTCGPAPWKSVALEEEQEGPGRTPGNL SSEDVLPAGCTEWRVQTLAYLPQEDWAPTSL  
 TRPAPPDSEGRSSSSSSSSNNNYCALGCGYGGWHL SALPGNTQSSGPIPALACGLSCDHQLETQQGVA  
 WVL LAGHCQRPGLHEDLQGMLLPSVLSKARSWTF

**TRTRPLEQKLI**SEEDLAANDILDYKDDDDKV

**Chromatograms:**

[https://cdn.origene.com/chromatograms/mg8005\\_c06.zip](https://cdn.origene.com/chromatograms/mg8005_c06.zip)

**Restriction Sites:**

Sgfl-MluI

**Cloning Scheme:**

**ACCN:** NM\_002186

**ORF Size:** 1563 bp

**OTI Disclaimer:** Due to the inherent nature of this plasmid, standard methods to replicate additional amounts of DNA in E. coli are highly likely to result in mutations and/or rearrangements. Therefore, OriGene does not guarantee the capability to replicate this plasmid DNA. Additional amounts of DNA can be purchased from OriGene with batch-specific, full-sequence verification at a reduced cost. Please contact our customer care team at [custsupport@origene.com](mailto:custsupport@origene.com) or by calling 301.340.3188 option 3 for pricing and delivery.

The molecular sequence of this clone aligns with the gene accession number as a point of reference only. However, individual transcript sequences of the same gene can differ through naturally occurring variations (e.g. polymorphisms), each with its own valid existence. This clone is substantially in agreement with the reference, but a complete review of all prevailing variants is recommended prior to use. [More info](#)

**OTI Annotation:** This clone was engineered to express the complete ORF with an expression tag. Expression varies depending on the nature of the gene.

**Components:** The ORF clone is ion-exchange column purified and shipped in a 2D barcoded Matrix tube containing 10ug of transfection-ready, dried plasmid DNA (reconstitute with 100 ul of water).

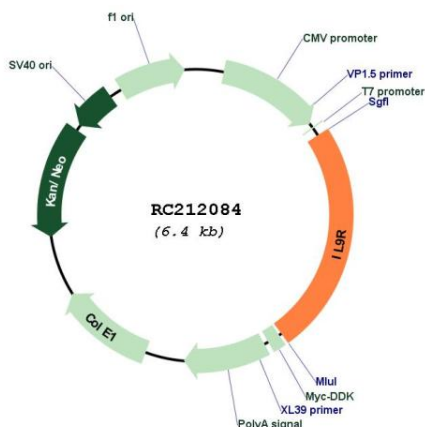
- Reconstitution Method:**
1. Centrifuge at 5,000xg for 5min.
  2. Carefully open the tube and add 100ul of sterile water to dissolve the DNA.
  3. Close the tube and incubate for 10 minutes at room temperature.
  4. Briefly vortex the tube and then do a quick spin (less than 5000xg) to concentrate the liquid at the bottom.
  5. Store the suspended plasmid at -20°C. The DNA is stable for at least one year from date of shipping when stored at -20°C.

**RefSeq:** [NM\\_002186.3](#)

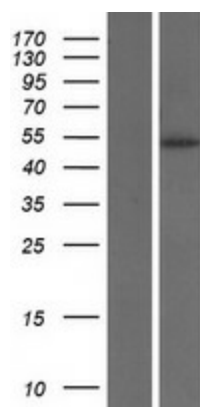
**RefSeq Size:** 2171 bp  
**RefSeq ORF:** 1566 bp  
**Locus ID:** 3581  
**UniProt ID:** [Q01113](#)  
**Cytogenetics:** Xq28 and Yq12  
**Protein Families:** Druggable Genome, Secreted Protein, Transmembrane  
**Protein Pathways:** Cytokine-cytokine receptor interaction, Hematopoietic cell lineage, Jak-STAT signaling pathway  
**MW:** 57.15 kDa

**Gene Summary:** The protein encoded by this gene is a cytokine receptor that specifically mediates the biological effects of interleukin 9 (IL9). The functional IL9 receptor complex requires this protein as well as the interleukin 2 receptor, gamma (IL2RG), a common gamma subunit shared by the receptors of many different cytokines. The ligand binding of this receptor leads to the activation of various JAK kinases and STAT proteins, which connect to different biologic responses. This gene is located at the pseudoautosomal regions of X and Y chromosomes. Genetic studies suggested an association of this gene with the development of asthma. Multiple pseudogenes on chromosome 9, 10, 16, and 18 have been described. Alternatively spliced transcript variants have been found for this gene. [provided by RefSeq, Jul 2008]

### Product images:



Circular map for RC212084



Western blot validation of overexpression lysate (Cat# [LY419475]) using anti-DDK antibody (Cat# [TA50011-100]). Left: Cell lysates from untransfected HEK293T cells; Right: Cell lysates from HEK293T cells transfected with RC212084 using transfection reagent MegaTran 2.0 (Cat# [TT210002]).