

Product datasheet for RC212081L3

SERPINB8 (NM_198833) Human Tagged Lenti ORF Clone

Product data:

Product Type:	Expression Plasmids
Product Name:	SERPINB8 (NM_198833) Human Tagged Lenti ORF Clone
Tag:	Myc-DDK
Symbol:	SERPINB8
Synonyms:	C18orf53; CAP2; PI-8; PI8; PSS5
Mammalian Cell Selection:	Puromycin
Vector:	pLenti-C-Myc-DDK-P2A-Puro (PS100092)
E. coli Selection:	Chloramphenicol (34 ug/mL)
ORF Nucleotide Sequence:	The ORF insert of this clone is exactly the same as(RC212081).
Restriction Sites:	SgfI-MluI
Cloning Scheme:	

Cloning sites used for ORF Shuttling:



* The last codon before the Stop codon of the ORF.

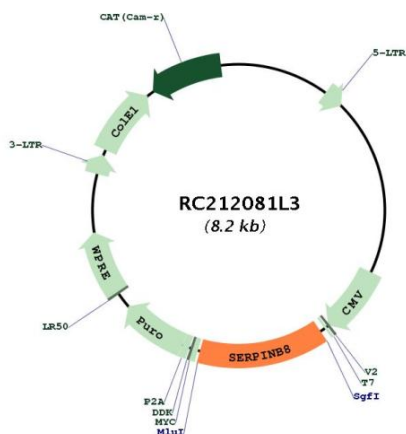
ACCN:	NM_198833
ORF Size:	1122 bp



[View online >](#)

OTI Disclaimer:	The molecular sequence of this clone aligns with the gene accession number as a point of reference only. However, individual transcript sequences of the same gene can differ through naturally occurring variations (e.g. polymorphisms), each with its own valid existence. This clone is substantially in agreement with the reference, but a complete review of all prevailing variants is recommended prior to use. More info
OTI Annotation:	This clone was engineered to express the complete ORF with an expression tag. Expression varies depending on the nature of the gene.
Components:	The ORF clone is ion-exchange column purified and shipped in a 2D barcoded Matrix tube containing 10ug of transfection-ready, dried plasmid DNA (reconstitute with 100 ul of water).
Reconstitution Method:	<ol style="list-style-type: none">1. Centrifuge at 5,000xg for 5min.2. Carefully open the tube and add 100ul of sterile water to dissolve the DNA.3. Close the tube and incubate for 10 minutes at room temperature.4. Briefly vortex the tube and then do a quick spin (less than 5000xg) to concentrate the liquid at the bottom.5. Store the suspended plasmid at -20°C. The DNA is stable for at least one year from date of shipping when stored at -20°C.
RefSeq:	NM_198833.1 , NP_942130.1
RefSeq Size:	3407 bp
RefSeq ORF:	1125 bp
Locus ID:	5271
UniProt ID:	P50452
Cytogenetics:	18q22.1
Protein Families:	Druggable Genome
MW:	42.6 kDa
Gene Summary:	The protein encoded by this gene is a member of the ov-serpin family of serine protease inhibitors. The encoded protein is produced by platelets and can bind to and inhibit the function of furin, a serine protease involved in platelet functions. In addition, this protein has been found to enhance the mechanical stability of cell-cell adhesion in the skin, and defects in this gene have been associated with an autosomal-recessive form of exfoliative ichthyosis. [provided by RefSeq, Jan 2017]

Product images:



Circular map for RC212081L3