

## Product datasheet for RC212081

### SERPINB8 (NM\_198833) Human Tagged ORF Clone

#### Product data:

Product Type:	Expression Plasmids
Product Name:	SERPINB8 (NM_198833) Human Tagged ORF Clone
Tag:	Myc-DDK
Symbol:	SERPINB8
Synonyms:	C18orf53; CAP2; PI-8; PI8; PSS5
Mammalian Cell Selection:	Neomycin
Vector:	pCMV6-Entry (PS100001)
E. coli Selection:	Kanamycin (25 ug/mL)
ORF Nucleotide Sequence:	>RC212081 representing NM_198833 Red=Cloning site Blue=ORF Green=Tags(s)

TTTTGTAATACGACTCACTATAGGGCGCCGGGAATTCGTCGACTGGATCCGGTACCGAGGAGATCTGCC  
GCC**CGATCGCC**

ATGGATGACCTCTGTGAAGCAAATGGCACTTTTGCCATCAGCTTATTTAAAATATTGGGGGAAGAGGACA  
ACTCAAGAAACGTATTCTTCTCTCCCATGAGCATCTCTCTGCCCTGGCCATGGTCTTCATGGGGGCAA  
GGGAAGCACTGCAGCCCAGATGTCCAGGCACTTTGTTTATACAAAGACGGAGATATCCCGAGGTTTC  
CAGTCACTTCTCAGTGAAGTTAACAGAAGTGGCACTCAGTACTTGCTTAGAACTGCCAACAGACTCTTTG  
GAGAAAAGACGTGTGATTTCTTCCAGACTTTAAAGAATACTGTCAGAAGTTCTATCAGGCAGAGCTGGA  
GGAGTTGTCTTTGCTGAAGACTGAAGAGTGCAGGAAGCATATAAATGACTGGGTGGCAGAGAAGACT  
GAAGGTAAGATTTAGAGGACTGGATGCTGGGACAGTCGATCCCTGACAAAGCTGGTCTTTGTGAATG  
CCATTTATTTCAAGGGAAAGTGAATGAGCAATTTGACAGAAAGTACACAAGGGGAATGCTCTTTAAAC  
CAACGAGGAAAAAAGACAGTGCAGATGATGTTAAGGAAGCTAAGTTTAAAATGGGGTATGCGGATGAG  
GTACACACCCAGGTCTGGAGCTGCCATGTGGAAGAGGAGCTGAGCATGGTCATTCTGCTTCCCGATG  
ACAACACGGACCTCGCCGTGGTGGAAAAAGCACTTACATATGAGAAATTCAAAGCCTGGACAAATTCAGA  
AAAGTTGACAAAAAGTAAAGTTCAAGTTTCTTCCCAGATTAAGCTGGAGGAGATTAAGTACTGGAG  
CTGAGAAGAATGTGCCTCTGTCCAAGTTGCCACAAGTCTTCTGGAGGTCAATGAGGAAGGCACAGA  
GGCTGCCGACCCACTGCTGTGGTCAGGAATCCCGGTGCAGCAGAATGGAGCCAAGATTCTGTGCAGAC  
CACCTTTTCTTTCTTCATCAGGCACCACAAAACCAACTGCATCTTGTCTGTGGCAGGTTCTCTCTC  
CG

**ACGCGT**ACGCGGCCGCTCGAGCAGAAACTCATCTCAGAAGAGGATCTGGCAGCAAATGATATCCTGGATT  
ACAAGGATGACGACGATAAGGTTTAA



[View online >](#)



**Reconstitution Method:**

1. Centrifuge at 5,000xg for 5min.
2. Carefully open the tube and add 100ul of sterile water to dissolve the DNA.
3. Close the tube and incubate for 10 minutes at room temperature.
4. Briefly vortex the tube and then do a quick spin (less than 5000xg) to concentrate the liquid at the bottom.
5. Store the suspended plasmid at -20°C. The DNA is stable for at least one year from date of shipping when stored at -20°C.

**RefSeq:** [NM\\_198833.1](#), [NP\\_942130.1](#)

**RefSeq Size:** 3407 bp

**RefSeq ORF:** 1125 bp

**Locus ID:** 5271

**UniProt ID:** [P50452](#)

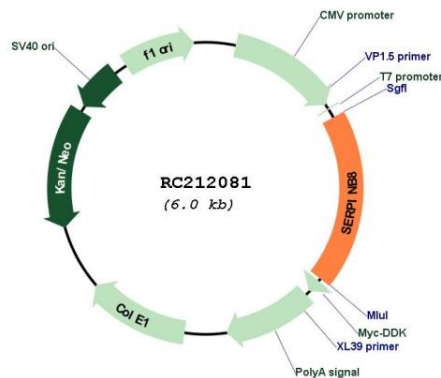
**Cytogenetics:** 18q22.1

**Protein Families:** Druggable Genome

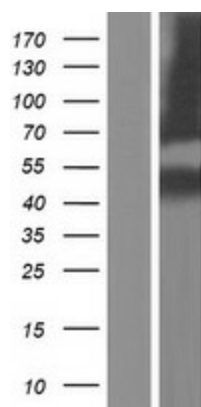
**MW:** 42.6 kDa

**Gene Summary:** The protein encoded by this gene is a member of the ov-serpin family of serine protease inhibitors. The encoded protein is produced by platelets and can bind to and inhibit the function of furin, a serine protease involved in platelet functions. In addition, this protein has been found to enhance the mechanical stability of cell-cell adhesion in the skin, and defects in this gene have been associated with an autosomal-recessive form of exfoliative ichthyosis. [provided by RefSeq, Jan 2017]

### Product images:



Circular map for RC212081



Western blot validation of overexpression lysate (Cat# [LY404778]) using anti-DDK antibody (Cat# [TA50011-100]). Left: Cell lysates from untransfected HEK293T cells; Right: Cell lysates from HEK293T cells transfected with RC212081 using transfection reagent MegaTran 2.0 (Cat# [TT210002]).