

Product datasheet for **RC212078**

KCNC4 (NM_004978) Human Tagged ORF Clone

Product data:

| | |
|---------------------------|--|
| Product Type: | Expression Plasmids |
| Product Name: | KCNC4 (NM_004978) Human Tagged ORF Clone |
| Tag: | Myc-DDK |
| Symbol: | KCNC4 |
| Synonyms: | C1orf30; HKSHIIC; KSHIIC; KV3.4 |
| Mammalian Cell Selection: | Neomycin |
| Vector: | pCMV6-Entry (PS100001) |
| E. coli Selection: | Kanamycin (25 ug/mL) |



[View online »](#)

ORF Nucleotide
Sequence:

>RC212078 representing NM_004978
Red=Cloning site Blue=ORF Green=Tags(s)

TTTTGTAATACGACTCACTATAGGGCGGCCGGAATTCGTCGACTGGATCCGGTACCGAGGAGATCTGCC
GCC**CGGATCGCC**

ATGATCAGCTCGGTGTGTCTCCTCTACCGCGGGCGAAGTCGGGAACAAGCCTCCGTCCAAAACAT
GTCTGAAGGAGGAGATGGCCAAGGGCGAGGCGTCGGAGAAGATCATCATCAACGTGGGCGGCACGCGACA
TGAGACCTACCGCAGCACCCCTGCGCACCCCTACCGGAACCCGCCTCGCCTGGCTGGCCGACCCCGACGGC
GGGGGCCGGCCGAGACCGATGGCGGGGTGTGGGTAGCAGCGGCAGCAGCGGGCGGGGGCTGCGAGT
TCTTCTCGACAGGCACCCGGGCGTCTTCGCCTACGTGCTCAACTACTACCGCACCGGAAGCTGCACTG
CCCCGCGGACGTGTGCGGGCCGCTCTTGAAGAGGAGCTCACCTTCTGGGCATCGACGAGACCGACGTG
GAACCTGCTGCTGGATGACCTACCGGCAGCACCGCGACCCGAGGAGGCGCTCGACATCTTCGAGAGCC
CGGACGGAGGCGCAGCGCGCGGGGCCAGCGACGAGGCCGGCGACGATGAGCGGGAGCTGGCCCTGCA
GCGACTGGGCCCCACGAGGGAGGCGGGGCCATGGCGCCGGGTCTGGGGCTGCCGCGGCTGGCAGCCC
CGCATGTGGGCGCTCTTCGAGGATCCCTACTCCTCCCGGGCCGCTAGGGTAGTGGCCTTTGCCTCTCTCT
TCTTCATCCTGGTCTCCATCACCACCTTTCTGCCTGGAGACCCATGAGGCCTTTAATATCGACCGAACGT
GACAGAGATCCTCCGCTAGGGAACATCACCAGCGTCACTTCCGGCGGGAGGTAGAGACAGAGCCCATC
CTGACCTACATCGAGGGCGTATGTGTGCTGTGGTTCACACTGGAGTTCCTGGTGCGCATCGTGTGCTGCC
CCGACACGCTGGACTTCGTCAAGAACCTGCTCAACATCATCGACTTTGTGGCCATCTGCCCTTCTACCT
GGAGGTGGGGCTGAGCGGCTGTATCCAAGCGGGCCCGCAGCGTGTGGGCTTCTGCGCGTGGTGCGC
TTCGTGCGCATCCTGCGTATCTTCAAGCTCACACGCCACTTCGTGGGGCTACGCGTGTGGGCCACACCC
TGAGGGCCAGCACCAATGAGTTCCTGCTGCTTATCATCTTCTGGCCCTGGGTGTGCTCATTTTGCCAC
CATGATCTACTACGCTGAGCGCATTGGGGCCAGGCCCTCCGACCCCTCGGGTAATGACCACACCGACTTC
AAGAACATCCCCATTGGCTTCTGGTGGGCTGTGGTCACCATGACGACACTGGGCTACGGAGACATGTACC
CCAAGACGTGGTCAGGCATGCTGGTAGGGGCACTGTGTGCACTGGCTGGCGTGTCCACCATGCCATGCC
GGTGCCTGTATCGTCAACAACCTTCGGCATGTACTACTCCCTGGCCATGGCCAAGCAGAAGCTGCCAAG
AAACGGAAGAAGCACGTGCCACGGCCGGCGCAGCTGGAGTCAACCATGTACTGCAAGTCTGAGGAGACTT
CCCCCGGGACAGCACCTGCAGTGATACCAGCCCCCTGCCGGGAAGAGGGTATGATCGAGAGGAAACG
GGCAGACTCTAAGCAGAATGGCGATGCCAACGCAGTGTGTGATGAGGAGGGAGCTGGCCTCACCCAA
CCCTGGCCTCCTCCCCACCCCGAGGAGCGCCGGGCCCTGCGACGCTCCACCCTCGAGACAGAAACA
AGAAGGCAGCTGCCTGCTTCTGCTCAGCACTGGGGACTATGCCTGCGCCGATGGTAGTGTCCGGAAAGG
CACATTGCTCCTCCGTGACCTTCCCTTACGATTACCTGAGGCTGCATGCCCTCCAACCTGCTGGGACT
CTGTTCTGCCACAT

AG**CGGACCG**ACGCGTACGCGGCCGCTCGAGCAGAACTCATCTCAGAAGAGGATCTGGCAGCAAATGATATCC
TGGATTACAAGGATGACGACGATAAGGTTTAA

Protein Sequence: >RC212078 representing NM_004978
Red=Cloning site Green=Tags(s)

```

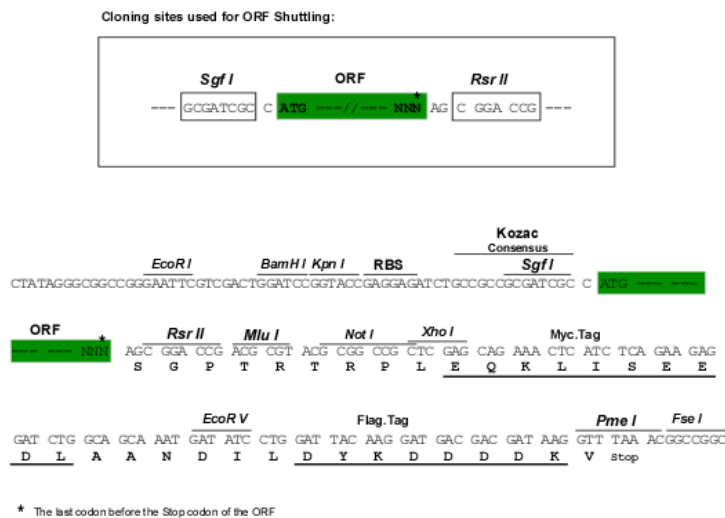
MISSVCVSSYGRKSGNKPPSKTCLKEEMAKGEASEKIIINVGGTRHETYRSTLRTLPGTRLAWLADPDG
GGRPETDGGVGGSSGGGGCEFFDRHPGVFAYVLNYYRTGKLHCPADVCGPLFEELTFWIDETDV
EPCCWMTYRQHRDAEEALDIFESPDGGGSGAGPSDEAGDDERELALQRLGPHEGGAGHGAGSGGCRGWQP
RMWALFEDPYSSRAARVAFASLFFILVSITTFCLEHEAFNIDRNVTEILRVGNITSVHFRREVETEPI
LTYIEGCVLWFTLEFLVRIVCCPDTLDFVKNLLNIIDFVAILPFYLEVGLSGLSSKAARDVLGFLRVVR
FVRILRIFKLTRHFVGLRVLGHTLRASTNEFLLLIIFLALGVLIFATMIYYAERIGARPSDPRGNDHTDF
KNIPIGFWWAVVTMTTLGYDMYPKTWSGMLVGALCALAGVLTAMPVPIVNNFGMYSLAMAKQLPK
KRKKHVPRPAQLESPMYCKSEETSPRDSTCSDTSPAREEGMIERKRADSKQNGDANAVLSDEEGAGLTQ
PLASSPTPEERRALRRSTTRDRNKAAACFLSTGDYACADGSRKGTFLRDLPLQHSPEACPPTAGT
LFLPH
    
```

SGPTRRRLEQKLI SEEDLAANDILDYKDDDDKV

Chromatograms: https://cdn.origene.com/chromatograms/mk6187_e11.zip

Restriction Sites: SgfI-RsrII

Cloning Scheme:



ACCN: NM_004978

ORF Size: 1905 bp

OTI Disclaimer: The molecular sequence of this clone aligns with the gene accession number as a point of reference only. However, individual transcript sequences of the same gene can differ through naturally occurring variations (e.g. polymorphisms), each with its own valid existence. This clone is substantially in agreement with the reference, but a complete review of all prevailing variants is recommended prior to use. [More info](#)

OTI Annotation: This clone was engineered to express the complete ORF with an expression tag. Expression varies depending on the nature of the gene.

Components: The ORF clone is ion-exchange column purified and shipped in a 2D barcoded Matrix tube containing 10ug of transfection-ready, dried plasmid DNA (reconstitute with 100 ul of water).

Reconstitution Method:

1. Centrifuge at 5,000xg for 5min.
2. Carefully open the tube and add 100ul of sterile water to dissolve the DNA.
3. Close the tube and incubate for 10 minutes at room temperature.
4. Briefly vortex the tube and then do a quick spin (less than 5000xg) to concentrate the liquid at the bottom.
5. Store the suspended plasmid at -20°C. The DNA is stable for at least one year from date of shipping when stored at -20°C.

RefSeq: [NM_004978.6](#)

RefSeq Size: 2879 bp

RefSeq ORF: 1908 bp

Locus ID: 3749

UniProt ID: [Q03721](#)

Cytogenetics: 1p13.3

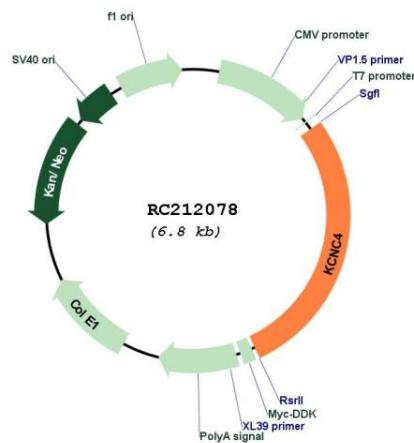
Domains: BTB, K_tetra, ion_trans

Protein Families: Druggable Genome, Ion Channels: Potassium, Transmembrane

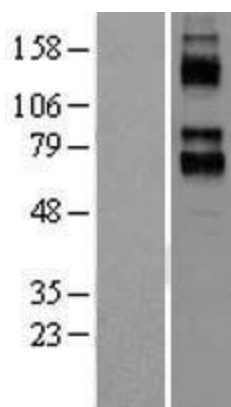
MW: 69.6 kDa

Gene Summary: The Shaker gene family of Drosophila encodes components of voltage-gated potassium channels and is comprised of four subfamilies. Based on sequence similarity, this gene is similar to the Shaw subfamily. The protein encoded by this gene belongs to the delayed rectifier class of channel proteins and is an integral membrane protein that mediates the voltage-dependent potassium ion permeability of excitable membranes. It generates atypical voltage-dependent transient current that may be important for neuronal excitability. Multiple transcript variants have been found for this gene. [provided by RefSeq, Jul 2010]

Product images:



Circular map for RC212078



Western blot validation of overexpression lysate (Cat# [LY401547]) using anti-DDK antibody (Cat# [TA50011-100]). Left: Cell lysates from untransfected HEK293T cells; Right: Cell lysates from HEK293T cells transfected with RC212078 using transfection reagent MegaTran 2.0 (Cat# [TT210002]).