

Product datasheet for **RC212066**

MS4A7 (NM_206939) Human Tagged ORF Clone

Product data:

Product Type:	Expression Plasmids
Product Name:	MS4A7 (NM_206939) Human Tagged ORF Clone
Tag:	Myc-DDK
Symbol:	MS4A7
Synonyms:	4SPAN2; CD20L4; CFFM4; MS4A8
Mammalian Cell Selection:	Neomycin
Vector:	pCMV6-Entry (PS100001)
E. coli Selection:	Kanamycin (25 ug/mL)
ORF Nucleotide Sequence:	>RC212066 ORF sequence Red=Cloning site Blue=ORF Green=Tags(s)

TTTTGTAATACGACTCACTATAGGGCGCCGGGAATTCGTCGACTGGATCCGGTACCGAGGAGATCTGCC
GCC**CGATCGCC**

ATGCTATTACAATCCCAAACCATGGGGTTTCTCACAGCTTTACACCAAAGGGCATCACTATCCCTCAA
GAGAGAAACCTGGACACATGTACCAAACGAAGATTACCTGCAGAACGGGCTGCCAACAGAAACCACCGT
TCTTGGGACTGTCCAGATCCTGTGTTGCCTGTTGATTTCAAGTCTGGGGCCATCTTGGTTTTTGTCCC
TACCCCTCCCACTTCAATCCAGCAATTTCCACCCTTTGATGTCTGGGTACCCATTTTTAGGAGCTCTGT
GTTTTGGCATTACTGGATCCCTCTCAATTATCTCTGAAAACAATCAACTAAGCCCTTTGACCTGAGCAG
CTTGACCTCAAATGCAGTGAGTTCTGTTACTGCAGGAGCAGGCCTCTTCCTCCTTGCTGACAGCATGGTA
GCCCTGAGGACTGCCTCTCAACATTGTGGCTCAGAAATGGATTATCTATCCTCATTGCCTTATTCGGAGT
ACTATTATCCAATATATGAAATCAAAGATTGTCTCCTGACCAGTGTCAAGTTAACAGGTGTCTAGTGGT
GATGCTCATCTTCACTGTGCTGGAGCTCTATTAGCTGCATACAGTTCTGTCTTTTGGTGGAAACAGCTC
TACTCAAACAACCTGGGAGTTCAATTTTCTCGACCCAGTCACAAGATCATATCCAACAGGTCAAAAAGA
GTTCTTCACGGTCTTGGATA

ACGCGTACGCGGCCGCTCGAGCAGAAACTCATCTCAGAAGAGGATCTGGCAGCAAATGATATCCTGGATT
ACAAGGATGACGACGATAAGGTTTAA



[View online »](#)

Protein Sequence: >RC212066 protein sequence
Red=Cloning site Green=Tags(s)

MLLQSQTMGVSHSFTPKGITIPQREKPGHMYQNEDYLQNLPTETTTLVLTGVQILCCLLISSLGAILVFAP
 YPSHFNPAISTTLMSGYPFLGALCFGITGSLSIISGKQSTKPFDLSSLTNAVSSVTAGAGLFLADSMV
 ALRTASQHCSEMDYLSLPHYSEYYYPIYEIKDCLLTSVSLTGVLVVMLIFTVLELLLLAAYSSVFWKQL
 YSNPSSSFSSTQSDHIQQVKKSSRSWI

TRTRPLEQKLISEEDLAANDILDYKDDDDKV

Chromatograms: https://cdn.origene.com/chromatograms/mk6628_g09.zip

Restriction Sites: SgfI-MluI

Cloning Scheme:



ACCN: NM_206939

ORF Size: 720 bp

OTI Disclaimer: The molecular sequence of this clone aligns with the gene accession number as a point of reference only. However, individual transcript sequences of the same gene can differ through naturally occurring variations (e.g. polymorphisms), each with its own valid existence. This clone is substantially in agreement with the reference, but a complete review of all prevailing variants is recommended prior to use. [More info](#)

OTI Annotation: This clone was engineered to express the complete ORF with an expression tag. Expression varies depending on the nature of the gene.

Components: The ORF clone is ion-exchange column purified and shipped in a 2D barcoded Matrix tube containing 10ug of transfection-ready, dried plasmid DNA (reconstitute with 100 ul of water).

Reconstitution Method:

1. Centrifuge at 5,000xg for 5min.
2. Carefully open the tube and add 100ul of sterile water to dissolve the DNA.
3. Close the tube and incubate for 10 minutes at room temperature.
4. Briefly vortex the tube and then do a quick spin (less than 5000xg) to concentrate the liquid at the bottom.
5. Store the suspended plasmid at -20°C. The DNA is stable for at least one year from date of shipping when stored at -20°C.

RefSeq: [NM_206939.2](#)

RefSeq Size: 2976 bp

RefSeq ORF: 723 bp

Locus ID: 58475

UniProt ID: [Q9GZW8](#)

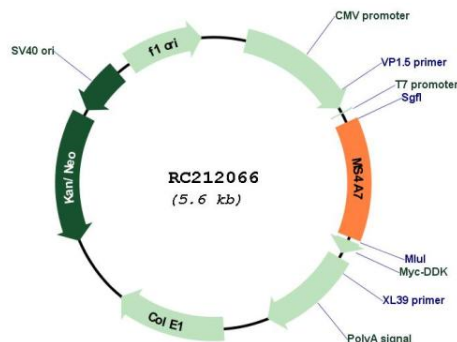
Cytogenetics: 11q12.2

Protein Families: Druggable Genome, Transmembrane

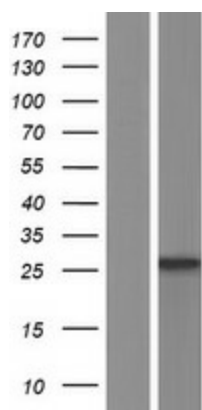
MW: 26.1 kDa

Gene Summary: This gene encodes a member of the membrane-spanning 4A gene family, members of which are characterized by common structural features and similar intron/exon splice boundaries and display unique expression patterns in hematopoietic cells and nonlymphoid tissues. This family member is associated with mature cellular function in the monocytic lineage, and it may be a component of a receptor complex involved in signal transduction. This gene is localized to 11q12, in a cluster of other family members. At least four alternatively spliced transcript variants encoding two distinct isoforms have been observed. [provided by RefSeq, Jul 2008]

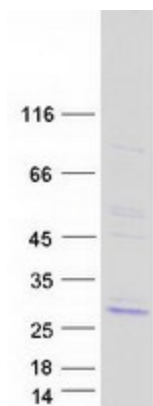
Product images:



Circular map for RC212066



Western blot validation of overexpression lysate (Cat# [LY404182]) using anti-DDK antibody (Cat# [TA50011-100]). Left: Cell lysates from untransfected HEK293T cells; Right: Cell lysates from HEK293T cells transfected with RC212066 using transfection reagent MegaTran 2.0 (Cat# [TT210002]).



Coomassie blue staining of purified MS4A7 protein (Cat# [TP312066]). The protein was produced from HEK293T cells transfected with MS4A7 cDNA clone (Cat# RC212066) using MegaTran 2.0 (Cat# [TT210002]).