

## Product datasheet for **RC212056**

### beta Catenin (CTNNB1) (NM\_001098209) Human Tagged ORF Clone

#### Product data:

Product Type:	Expression Plasmids
Product Name:	beta Catenin (CTNNB1) (NM_001098209) Human Tagged ORF Clone
Tag:	Myc-DDK
Symbol:	beta Catenin
Synonyms:	armadillo; CTNNB; EVR7; MRD19; NEDSDV
Mammalian Cell Selection:	Neomycin
Vector:	pCMV6-Entry (PS100001)
E. coli Selection:	Kanamycin (25 ug/mL)



[View online »](#)

ORF Nucleotide  
Sequence:

>RC212056 representing NM\_001098209  
Red=Cloning site Blue=ORF Green=Tags(s)

TTTTGTAATACGACTCACTATAGGGCGGCCGGAATTCGTGACTGGATCCGGTACCGAGGAGATCTGCC  
GCC**CGCATCGCC**

ATGGCTACTCAAGCTGATTTGATGGAGTTGGACATGGCCATGGAACCAGACAGAAAAGCGGCTGTTAGTC  
ACTGGCAGCAACAGTCTTACCTGGACTCTGGAATCCATTCGGTGCCACTACCACAGCTCCTTCTCTGAG  
TGGTAAAGGCAATCCTGAGGAAGAGGATGTGGATACCTCCCAAGTCTGTATGAGTGGAACAGGGATTT  
TCTCAGTCCTTCACTCAAGAACAAGTAGCTGATATTGATGGACAGTATGCAATGACTCGAGCTCAGAGGG  
TACGAGCTGCTATGTTCCCTGAGACATTAGATGAGGGCATGCAGATCCCATCTACACAGTTTGATGCTGC  
TCATCCCCTAATGTCCAGCGTTTGGCTGAACCATCACAGATGCTGAAACATGCAGTTGTAACCTTGATT  
AACTATCAAGATGATGCAGAATGGCCACACGTGCAATCCCTGAACTGACAAAACGCTAAATGACGAGG  
ACCAGGTGGTGGTAAATAAGGCTGCAGTTATGGTCCATCAGCTTCTAAAAAGGAAGCTTCCAGACACGC  
TATCATGCGTTCTCCTCAGATGGTGTCTGCTATTGTACGTACCATGCAGAATACAATGATGTAGAAACA  
GCTCGTTGTACCGCTGGGACCTTGATAACCTTTCCCATCATCGTGAGGGCTTACTGGCCATCTTTAAGT  
CTGGAGGCATTCCTGCCCTGGTGAATGCTTGGTTCCACAGTGGATTCTGTGTTGTTTTATGCCATTAC  
AACTCTCCACAACCTTTTATTACATCAAGAAGGAGCTAAAATGGCAGTGCCTTTAGCTGGTGGGCTGCAG  
AAAATGGTTGCCTTGCTCAACAAAACAAATGTTAAATCTTGGCTATTACGACAGACTGCCTTCAAATTT  
TAGCTTATGGCAACCAAGAAAGCAAGCTCATCATACTGGCTAGTGGTGGACCCCAAGCTTTAGTAAATAT  
AATGAGGACCTATACTTACGAAAACACTACTGTGGACCACAAGCAGAGTGCAGAGTGCATCTGTCTGC  
TCTAGTAATAAGCCGGCTATTGTAGAAGCTGGTGAATGCAAGCTTTAGGACTTCACCTGACAGATCCAA  
GTCAACGCTTTGTTCAGAACTGCTTTGGACTCTCAGGAATCTTTCAGATGCTGCAACTAAACAGGAAGG  
GATGGAAGGTCTCCTTGGGACTCTTGTTCAGCTTCTGGGTTTCAGATGATATAAATGTGGTCACCTGTGCA  
GCTGGAATCTTTCTAACCTCACTTGAATAATTATAAGAACAAGATGATGGTCTGCCAAGTGGGTGGTA  
TAGAGGCTCTTGTGCGTACTGTCCTTCGGGCTGGTACAGGGAAGACATCACTGAGCCTGCCATCTGTGC  
TCTTCGTCATCTGACCAGCCGACACCAAGAAGCAGAGATGGCCAGAATGCAGTTCGCCTTCACTATGGA  
CTACCAGTTGTGGTTAAGCTCTTACACCCACCATCCCACTGGCCTCTGATAAAGGCTACTGTTGGATTGA  
TTCGAAATCTTGCCTTTGTCCCGCAAATCATGCACCTTTGCGTGAGCAGGGTGCATTCCACGACTAGT  
TCAGTTGCTTGTTCGTGCACATCAGGATACCCAGCGCGTACGTCCATGGGTGGGACACAGCAGCAATTT  
GTGGAGGGGGTCCGCATGGAAGAAATAGTTGAAGTTGTACCGGAGCCCTTACATCCTAGCTCGGGATG  
TTCACAACCGAATTGTTATCAGAGGACTAAATACCATTCCATTGTTTGTGAGCTGCTTTATTCTCCCAT  
TGAAAACATCCAAGAGTAGCTGCAGGGTCTCTGTGAACCTGCTCAGGACAAGGAAGTGCAGAAAGCT  
ATTGAAGCTGAGGGAGCCACAGCTCCTCTGACAGAGTACTTCACTCTAGGAATGAAGGTGTGGCGACAT  
ATGCAGCTGCTGTTTTGTTCCGAATGTCTGAGGACAAGCCACAAGATTACAAGAAACGGCTTTCAGTTGA  
GCTGACCAGCTCTCTCTCAGAACAGAGCCAATGGCTTGGAAATGAGACTGCTGATCTTGGACTTGATATT  
GGTGCCAGGGGAGAACCCTTGGATATCGCCAGGATGATCCTAGCTATCGTTCTTTTCACTCTGGTGGAT  
ATGGCCAGGATGCCTTGGTATGGACCCCATGATGGAACATGAGATGGGTGGCCACCACCCTGGTGTGA  
CTATCCAGTTGATGGGCTGCCAGATCTGGGGCATGCCAGGACCTCATGGATGGGCTGCCTCCAGGTGAC  
AGCAATCAGCTGGCCTGGTTTGATACTGACCTG

**ACGCGT**ACGCGGCCGCTCGAGCAGAAACTCATCTCAGAAGAGGATCTGGCAGCAAATGATATCCTGGATT  
ACAAGGATGACGACGATAAGGTTTAA

**Protein Sequence:** >RC212056 representing NM\_001098209  
Red=Cloning site Green=Tags(s)

MATQADLMELDMAMEPDRKAAVSHWQQSYLDSGIHSGATTTAPSLSGKGNPEEEDVDTSQVLYEWEQGF  
SQSFTQEQVADIDGOYAMTRAQRVRAAMFPETLDEGMQIPSTQFDDAAHPTNVQRLAEPQMLKHAVVNI  
NYQDDAELATRAIPELTKLLNDEDQVVVNKAAMVHQLSKKEASRHAIMRSPQMVSIVRTMONTNDVET  
ARCTAGTLHNLSSHREGLLAIIFKSGGIPALVKMLGSPVDSVLFYAITTLHNLHLLHQEGAKMAVRLAGGLQ  
KMVALLNKTNVKFLAITTDCLQILAYGNQESKLIILASGGPQALVNIMRTYTYEKLLWTTSRVLKVL SVC  
SSNKPAIVEAGGMQALGHLHTDPSQRLVQNCLWTLRNLSDAATKQEGMEGLLGTLVQLLGSDDINVVTC  
AGILSNLTCNNYKNMMVCQVGGIEALVRTVLRAGDREDITEPAICALRHLTSRHQEAEMAQNAVRLHYG  
LPVVVLLHPPSHWPLIKATVGLIRNLALCPANHAPLREQGAI PRLVQLLVRAHQDTQRRTSMGGTQQQF  
VEGVRMEEIVEGCTGALHILARDVHNRI VIRGLNTIPLFVQLLYSPIENIQRVAAGVLC ELAQDKEAAEA  
IEAEGATAPL TELLHSRNEGVATYAAAVLFRMSEDKPQDYKKRLSVELTSSLFRTEPMAWNETADLGLDI  
GAQGEPLGYRQDDPSYRSFHSGGYGQDALGMDPMMEHEMGGHHPGADYPVDGLPDLGHAQDLM DGLPPGD  
SNQLAWFDTDL

TRTRPLEQKLI SEEDLAANDILDYKDDDDKV

**Chromatograms:** [https://cdn.origene.com/chromatograms/mg2717\\_a01.zip](https://cdn.origene.com/chromatograms/mg2717_a01.zip)

**Restriction Sites:** Sgfl-Mlul

**Cloning Scheme:**


**ACCN:** NM\_001098209

**ORF Size:** 2343 bp

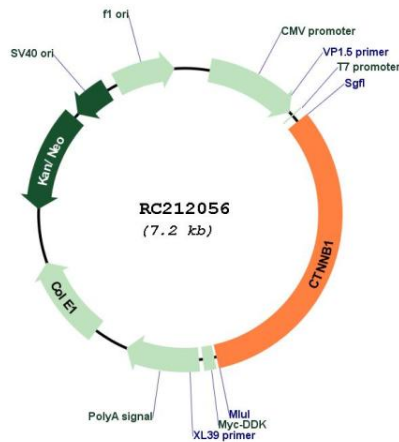
**OTI Disclaimer:** The molecular sequence of this clone aligns with the gene accession number as a point of reference only. However, individual transcript sequences of the same gene can differ through naturally occurring variations (e.g. polymorphisms), each with its own valid existence. This clone is substantially in agreement with the reference, but a complete review of all prevailing variants is recommended prior to use. [More info](#)

**OTI Annotation:** This clone was engineered to express the complete ORF with an expression tag. Expression varies depending on the nature of the gene.

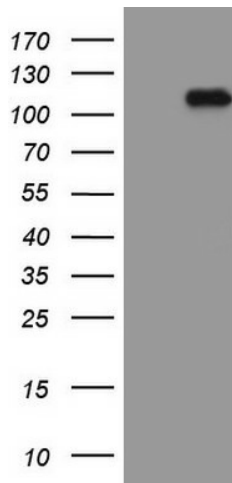
**Components:** The ORF clone is ion-exchange column purified and shipped in a 2D barcoded Matrix tube containing 10ug of transfection-ready, dried plasmid DNA (reconstitute with 100 ul of water).

<b>Reconstitution Method:</b>	<ol style="list-style-type: none"><li>1. Centrifuge at 5,000xg for 5min.</li><li>2. Carefully open the tube and add 100ul of sterile water to dissolve the DNA.</li><li>3. Close the tube and incubate for 10 minutes at room temperature.</li><li>4. Briefly vortex the tube and then do a quick spin (less than 5000xg) to concentrate the liquid at the bottom.</li><li>5. Store the suspended plasmid at -20°C. The DNA is stable for at least one year from date of shipping when stored at -20°C.</li></ol>
<b>Note:</b>	Plasmids are not sterile. For experiments where strict sterility is required, filtration with 0.22um filter is required.
<b>RefSeq:</b>	<a href="#">NM_001098209.2</a>
<b>RefSeq Size:</b>	3415 bp
<b>RefSeq ORF:</b>	2346 bp
<b>Locus ID:</b>	1499
<b>UniProt ID:</b>	<a href="#">P35222</a>
<b>Cytogenetics:</b>	3p22.1
<b>Protein Families:</b>	Druggable Genome, ES Cell Differentiation/IPS, Transcription Factors
<b>Protein Pathways:</b>	Adherens junction, Arrhythmogenic right ventricular cardiomyopathy (ARVC), Basal cell carcinoma, Colorectal cancer, Endometrial cancer, Focal adhesion, Leukocyte transendothelial migration, Melanogenesis, Pathogenic Escherichia coli infection, Pathways in cancer, Prostate cancer, Thyroid cancer, Tight junction, Wnt signaling pathway
<b>MW:</b>	85.3 kDa
<b>Gene Summary:</b>	<p>The protein encoded by this gene is part of a complex of proteins that constitute adherens junctions (AJs). AJs are necessary for the creation and maintenance of epithelial cell layers by regulating cell growth and adhesion between cells. The encoded protein also anchors the actin cytoskeleton and may be responsible for transmitting the contact inhibition signal that causes cells to stop dividing once the epithelial sheet is complete. Finally, this protein binds to the product of the APC gene, which is mutated in adenomatous polyposis of the colon. Mutations in this gene are a cause of colorectal cancer (CRC), pilomatixoma (PTR), medulloblastoma (MDB), and ovarian cancer. Alternative splicing results in multiple transcript variants. [provided by RefSeq, Aug 2016]</p>

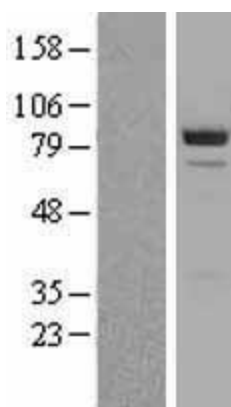
Product images:



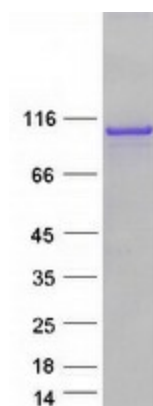
Circular map for RC212056



HEK293T cells were transfected with the pCMV6-ENTRY control (Cat# [PS100001], Left lane) or pCMV6-ENTRY CTNNB1 (Cat# RC212056, Right lane) cDNA for 48 hrs and lysed. Equivalent amounts of cell lysates (5 ug per lane) were separated by SDS-PAGE and immunoblotted with anti-CTNNB1 (Cat# [TA807908])(1:2000). Positive lysates [LY426005] (100ug) and [LC426005] (20ug) can be purchased separately from OriGene.



Western blot validation of overexpression lysate (Cat# [LY420558]) using anti-DDK antibody (Cat# [TA50011-100]). Left: Cell lysates from untransfected HEK293T cells; Right: Cell lysates from HEK293T cells transfected with [RC214557] using transfection reagent MegaTran 2.0 (Cat# [TT210002]).



Coomassie blue staining of purified CTNNB1 protein (Cat# [TP312056]). The protein was produced from HEK293T cells transfected with CTNNB1 cDNA clone (Cat# RC212056) using MegaTran 2.0 (Cat# [TT210002]).