

Product datasheet for **RC212046**

SOX6 (NM_033326) Human Tagged ORF Clone

Product data:

Product Type:	Expression Plasmids
Product Name:	SOX6 (NM_033326) Human Tagged ORF Clone
Tag:	Myc-DDK
Symbol:	SOX6
Synonyms:	HSSOX6; SOXD; TOLCAS
Mammalian Cell Selection:	Neomycin
Vector:	pCMV6-Entry (PS100001)
E. coli Selection:	Kanamycin (25 ug/mL)



[View online »](#)

**ORF Nucleotide
Sequence:**

>RC212046 representing NM_033326
 Red=Cloning site Blue=ORF Green=Tags(s)

TTTTGTAATACGACTCACTATAGGGCGGCCGGAATTCGTCGACTGGATCCGGTACCGAGGAGATCTGCC
 GCC**CGGATCGCC**

ATGTCTTCCAAGCAAGCCACCTCTCCATTTGCCTGTGCAGCTGATGGAGAGGATGCAATGACCCAGGATT
 TAACCTCAAGGGAAAAGGAAGAGGGCAGTGATCAACATGTGGCCTCCCATCTGCCTCTGCACCCATAAT
 GCACAACAAACCTCACTCTGAGGAGCTACCAACACTTGTCACTACCATTCAACAAGATGCTGACTGGGAC
 AGCGTTTGTCTCAGCAAAGAATGGAATCAGAGAATAATAAGTTATGTTCCCTATATTCCTCCGAA
 ATACCTTACCTCACCACATAAGCCTGACGAAGGGAGTCGGGACCGTGAGATAATGACCAGTGTTACTTT
 TGGAAACCCAGAGCGCCGAAAGGGAGTCTTGCCTGATGGTGGACACTGAAACAGAAGAAGCTTGAG
 GAAATGACTCGGACTGAACAAGAGGATTCCTCCTGCATGGAAAACTACTTTCAAAGATTGGAAGGAAA
 AAATGGAAAGACTAAATACCAGTGAACCTTGGAGAAATTAAGGTACACCTGAGAGCCTGGCAGAAAA
 AGAACGGCAGCTCTCCACATGATTACCCAGCTGATCAGTTTACGGGAGCAGCTACTGGCAGCGCATGAT
 GAACAGAAAAAATGGCAGCGTCACAAATGAGAAACAACGGCAGCAAAATGGACCTTGCTCGCCAACAGC
 AAGAACAGATTGCGAGACAACAGCAGCAACTTCTGCAACAGCAGCACAAAATTAATCTCCTGCGCAACA
 GATCCAGGTTTCAAGGTCACATGCCTCCGCTCATGATCCCAATTTTCCACATGACCAGCGGACTCTGGCA
 GCAGCTGCTGCTGCCAACAGGGATTCTCTTCCCCCTGGAAATAACATACAAACCAGGTGATAACTACC
 CCGTACAGTTCATTCCATCAACAATGGCAGCTGCTGCTGCTTCTGGACTCAGCCCTTACAGCTCCAGAA
 GGGTCACTGTCTCCACCCACAAATTAACCAAAGGCTAAAGGGCCTAAGTGACCGTTTTGGCAGGAATTTG
 GACACCTTTGAACATGGTGGTGGCCACTTTACAACCACAAACAGATTGAGCAGCTCTATGCCGCTCAGC
 TGGCCAGCATGCAGGTGCACCTGGAGCAAAGATGCCATCAACTCCACAGCCACCAACACAGCAGGGAC
 GGTCACCTACTGGGATAAAAAATGAAAAGAGAGGGACCAGCCCTGTAACCTCAAGTTAAGGATGAAGCA
 GCAGCACAGCCTCTGAATCTCTCATCCCGACCCAAAGACAGCAGAGCCTGTAAAGTCCCAACGTCTCCCA
 CCCAGAACCTTCTCCAGCCAGCAAAACCAGCCCTGTCAATCTGCCAAACAAAAGCAGCATCCCTAGCCC
 CATTGGAGGAAGCCTGGGAAGAGGATCTCTTTAGATATCCTATCTAGTCTCAACTCCCCTGCCCTTTT
 GGGGATCAGGATACAGTGATGAAAGCCATTGAGGAGGCGCGGAAGATGCGAGAGCAGATCCAGCGGGAGC
 AACAGCAGCAACAGCCACATGGTGTGACGGGAACTGCTCCATAAATAATATGGGGCTGAACAGCTG
 CAGGAATGAAAAGGAAAGAACCGCTTTGAGAATTTGGGGCCCCAGTTAACGGGAAAGTCAAATGAAGAT
 GAAAACTGGGCCAGGTGTCATCGACCTTACTCGGCCAGAAGATGCAGAGGGAGGTGCCACTGTGGCTG
 AAGCACGAGTCTACAGGGACGCCCGCGCGCTGCCAGCAGCGAGCCACACATTAAGCGACCAATGAATGC
 ATTCATGGTTTGGGCAAAGGATGAGAGGAGAAAAATCCTTCAGGCCTTCCCGACATGCATAACTCCAAC
 ATTAGCAAAATCTTAGGATCTCGCTGGAATCAATGTCCAACCAGGAGAAGCAACCTTATATGAAGAGC
 AGGCCCGGCTAAGCAAGATCCACTTAGAGAAGTACCAAACTATAAATACAAACCCCGACCGAAACGCAC
 CTGCATTGTTGATGGCAAAAAGCTTCGGATTGGGGAGTATAAGCAACTGATGAGGTCTCGGAGACAGGAG
 ATGAGGCAGTTCTTTACTGTGGGCAACAGCCTCAGATTCCAATCACCACAGGAACAGGTGTTGTGTATC
 CTGGTGTATCACTATGGCAACTACCACACCATCGCCTCAGATGACATCTGACTGCTCTAGCACCTCGGC
 CAGCCCCGAGCCAGCCTCCCGGTATCCAGAGCACTTATGGTATGAAGACAGATGGCGGAAGCCTAGCT
 GGAAATGAAATGATCAATGGAGAGGATGAAATGGAAATGTATGATGACTATGAAGATGACCCCAAATCAG
 ACTATAGCAGTGAATGAAAGCCCGGAGGCTGTCAAGTCCCAAC

ACGCGTACGCGCGCGCTCGAGCAGAAACTCATCTCAGAAGAGGATCTGGCAGCAATGATATCCTGGATT
 ACAAGGATGACGACGATAAGGTTTAA

Protein Sequence: >RC212046 representing NM_033326
Red=Cloning site Green=Tags(s)

MSSKQATSPFACAADGEDAMTQDLTSREKEEGSDQHVASHLPLHPIMHNKPHSEELPTLVSTIQQDADWD
SVLSSQQRMESENKLCSLYSFRNTSTSPHKPDEGSRDREIMTSVTFGTPERRKGLADVVDTLKQKKLE
EMTRTEQEDSSCKEKLKSKDWKEKMERLNTSELLGEIKGTPESLAEKERQLSTMITQLISLREQLAAHD
EQKKLAASQIEKQRQQMDLARQQEQIARQQQLLQQQHKINLLQQQIQVQGHMPPLMIPIFPHDQRTLA
AAAAAQGGFLFPPGITYPGDNYPVQFIPSTMAAAAASGLSPLQLQKQGHVSHQPINQRLKGLSDRFRNL
DTFEHGGGHSYNHKQIEQLYAAQLASMQVSPGAKMPSTPQPNTAGTVSPTGIKNEKRGTSPTVQVDEA
AAQPLNLSSRPKTAEPVKSPTSPTQNLFPASKTSPVNLPNKSSIPSPIGGSLGRGSSLDILSSLNSPALF
GDQDVTMKAIQEARKMREIQREQQQQPHGVDGKLSSINNMGLNSCRNEKERTRFENLGPQLTGKSNED
GKLGPGVIDLTRPEDAEGGATVAEARVYRDARGRASSEPHIKRPMNAFMVWAKDERRKILQAFPMHNSN
ISKILGSRWKSMSNQEKQPYEEQARLSKIHLEKYPNYKYKPRPKRTCIVDGKCLRIGEYKQLMRSRRQE
MRQFFTVGQQPIPIITTTGTGVVYPGAIMATTTTPSQMTSDCSSTSASPEPSLPVIQSTYGMKTDGGSLA
GNEMINGEDEMEMYDDYEDDPKSDYSSENEAPEAVSAN

TRTRPLEQKLISEEDLAANDILDYKDDDDKV

Chromatograms: https://cdn.origene.com/chromatograms/ja3260_d02.zip

Restriction Sites: Sgfl-Mlul

Cloning Scheme:


ACCN: NM_033326

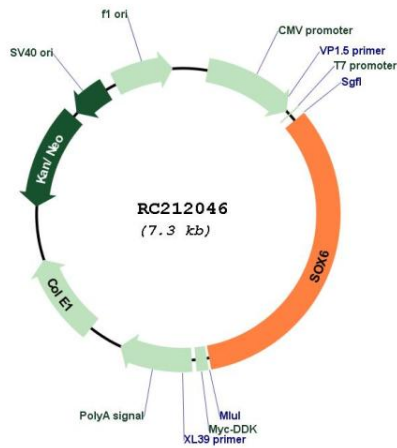
ORF Size: 2424 bp

OTI Disclaimer: Due to the inherent nature of this plasmid, standard methods to replicate additional amounts of DNA in E. coli are highly likely to result in mutations and/or rearrangements. Therefore, OriGene does not guarantee the capability to replicate this plasmid DNA. Additional amounts of DNA can be purchased from OriGene with batch-specific, full-sequence verification at a reduced cost. Please contact our customer care team at custsupport@origene.com or by calling 301.340.3188 option 3 for pricing and delivery.

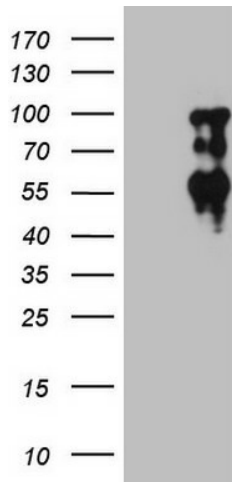
The molecular sequence of this clone aligns with the gene accession number as a point of reference only. However, individual transcript sequences of the same gene can differ through naturally occurring variations (e.g. polymorphisms), each with its own valid existence. This clone is substantially in agreement with the reference, but a complete review of all prevailing variants is recommended prior to use. [More info](#)

OTI Annotation:	This clone was engineered to express the complete ORF with an expression tag. Expression varies depending on the nature of the gene.
Components:	The ORF clone is ion-exchange column purified and shipped in a 2D barcoded Matrix tube containing 10ug of transfection-ready, dried plasmid DNA (reconstitute with 100 ul of water).
Reconstitution Method:	<ol style="list-style-type: none">1. Centrifuge at 5,000xg for 5min.2. Carefully open the tube and add 100ul of sterile water to dissolve the DNA.3. Close the tube and incubate for 10 minutes at room temperature.4. Briefly vortex the tube and then do a quick spin (less than 5000xg) to concentrate the liquid at the bottom.5. Store the suspended plasmid at -20°C. The DNA is stable for at least one year from date of shipping when stored at -20°C.
RefSeq:	NM_033326.3 , NP_201583.2
RefSeq Size:	8865 bp
RefSeq ORF:	2427 bp
Locus ID:	55553
UniProt ID:	P35712
Cytogenetics:	11p15.2
Domains:	HMG
Protein Families:	Transcription Factors
MW:	89.7 kDa
Gene Summary:	This gene encodes a member of the D subfamily of sex determining region y-related transcription factors that are characterized by a conserved DNA-binding domain termed the high mobility group box and by their ability to bind the minor groove of DNA. The encoded protein is a transcriptional activator that is required for normal development of the central nervous system, chondrogenesis and maintenance of cardiac and skeletal muscle cells. The encoded protein interacts with other family members to cooperatively activate gene expression. Alternative splicing results in multiple transcript variants.[provided by RefSeq, Mar 2009]

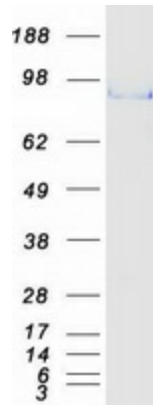
Product images:



Circular map for RC212046



HEK293T cells were transfected with the pCMV6-ENTRY control (Cat# [PS100001], Left lane) or pCMV6-ENTRY SOX6 (Cat# RC212046, Right lane) cDNA for 48 hrs and lysed. Equivalent amounts of cell lysates (5 ug per lane) were separated by SDS-PAGE and immunoblotted with anti-SOX6 (Cat# [TA808936])(1:2000). Positive lysates [LY403243] (100ug) and [LC403243] (20ug) can be purchased separately from OriGene.



Coomassie blue staining of purified SOX6 protein (Cat# [TP312046]). The protein was produced from HEK293T cells transfected with SOX6 cDNA clone (Cat# RC212046) using MegaTran 2.0 (Cat# [TT210002]).