

Product datasheet for **RC212045**

AFF2 (NM_002025) Human Tagged ORF Clone

Product data:

Product Type: Expression Plasmids
Product Name: AFF2 (NM_002025) Human Tagged ORF Clone
Tag: Myc-DDK
Symbol: AFF2
Synonyms: FMR2; FMR2P; FRAXE; MRX2; OX19; XLID109
Mammalian Cell Selection: Neomycin
Vector: pCMV6-Entry (PS100001)
E. coli Selection: Kanamycin (25 ug/mL)
ORF Nucleotide Sequence: >RC212045 representing NM_002025
 Red=Cloning site Blue=ORF Green=Tags(s)

TTTTGTAATACGACTCACTATAGGGCGGCCGGAATTCGTCGACTGGATCCGGTACCGAGGAGATCTGCC
 GCC**CGATCGCC**

ATGGATCTATTCGACTTTTTTCAGAGACTGGGACTTGGAGCAGCAGTGTCCTACTATGAACAAGACCGTAGTG
 CACTTAAAAAAGGGAATGGGAGCGGAGGAATCAAGAAGTCCAGCAAGAAGACGATCTCTTTTCTTCAGG
 CTTTGTCTTTTTGGGGAGCCATACAAGGTAGCTGAATATACAAACAAAGGTGATGCACTTGCCAACCGA
 GTCCAGAACACGCTTGGAACTATGATGAAATGAAGAATTTGCTAACTAACCTTCTAATCAGAATCACC
 TAGTGGGAATCCAAAGAATTCTGTGCCCGAGAATCCCAACAACAAAAATGAACCAAGCTTTTTTCCAGA
 AAAAAAGAACAGAATAATCCACCTCACCAGGATAATACCCATCCTTCAGCACCATGCCTCCACCTTCT
 GTTGATGACTGAATCAACTCTAATACACAGCAACAGAAAAATCAAAACCTGAGTGGTCCAGTGATAGTC
 ATAACCTTAGCACTGACTGGCAAGCCAGGCCAGTGGTCAGCCAAACAAGATGCAGACTTTGACACAGGA
 CCAGTCTCAAGCCAACTGGAAGACTTCTTTGTCTACCCAGCTGAACAGCCCCAGATTGGAGAAGTTGAA
 GAGTCAAACCCATCTGCAAAGGAAGACAGTAACCCTAATTCTAGTGGAGAAGATGCTTTCAAAGAAATCT
 TTCAATCCAATCACCGGAAGAATCTGAATTCGCCGTGCAAGCGCCTGGGTCTCCCTAGTGGCTTCCTC
 TTTATTAGCTCCTAGCAGTGGCCTTTTCAGTTCAAACCTCCCACCAGGGCTTTACTGCAAAACAAGCATG
 GGCAGCAAAAGCCAACATGCATACGTGAGACCCATGGATGGCCAGGACCAGGCACCGGACATCTCACCAA
 CACTGAAACCTTCAATTGAATTTGAGAACAGCTTTGGGAATCTGTCAATTTGGAACACTCTTGGATGGAAA
 ACCCAGTGCAGCCAGTTCAAAGACTAAACTGCCAAAGTTCACCATCCTCCAAACAAGTGAAGTAAGCCTT
 CCCAGTGATCCAAGCTGTGTTGAAGAAATCTTGCGGGAGATGACCCATTCTGGCCTACTCCTCTCACTT
 CCATGCATACTGCTGGCACTCTGAGCAGAGCACCTTTTCCATCCAGGACAGGAATCGCAGCATCTGAC
 CCCAGGATTCACCTTAAAAAGTGAATGACCCAACCACCAGAGCTTCTACAAAGTCAGTGTCTTTCAA
 TCGATGCTTGAGGATGACCTGAAGCTGAGCAGTGATGAAGATGACCTTGAGCCTGTGAAGACCTTGACCA
 CTCAGTGCCTGCACTGAGCTCTACCAGGCTGTTGAAAAGGCAAAACCTAGGAATAATCCTGTGAACCC
 ACCCTTGGCCACTCCCCAGCCCCACCTGCAGTGCAAGCCAGCGGGGTTCTGGCAGCTCCAGCGAATCG



[View online »](#)

GAGAGCAGCTCTGAGTCGGATTGAGACTGAAAGTAGCACCCTGACAGCGAATCTAATGAGGCACCTC
GTGTGGCAACTCCAGAGCCTGAGCCACCCTCAACCAACAAGTGGCAACTGGATAAATGGCTTAACAAAGT
GACATCCCAGAACAAGTCTTTATTTGTGGCCAAATGAAACACCCATGGAGACTATTTCTCTGCCTCCT
CCAATCATCCAACCAATGGAAGTCCAGATGAAAGTGAAGACGAATGCCAGTCAGGTCCCAGCTGAACCCA
AAGAAAGGCTCTCCTCAGTCTCATTAGGGAGAAAGCCGTCACGGCCCACTCAGAAAAATCCAGAAAC
AAAGCTTTGAAGCATAAGTTGTCAACAAGTGTGAGACAGTGTCTCAAAGGACAATGGGAAAAACAG
CCAAAAAAGTTGAGAAGAACCAGCAGCTGACGAGTTTACCTGGCCAAACCAATATTACCAGCAGCA
CTCCCAAAGAAAAAGTGTGGAGCTTCATGACCCACCAAGAGGCCGCAACAAAGCCACTGCCACAA
ACCAGCCCTAGGAAAGAACCAAGACCTAACATCCCTTTGGCTCCCGAGAAGAAGTACAGAGGGCT
GGCAAGATTGTGCCAAAGTCTCGGGAATTCATTGAAACAGATTCTACATCTGACTCCAACACAGATC
AGGAAGAGACCCTGCAAAATCAAAGTCTGCCTCCGTGCATTATTTCTGGAGGTAATACTGCCAAATCCAA
GGAAATCTGTGGTGCCAGCCTGACCCTCAGCACCTTAATGAGTAGCAGTGGCAGCAACAACAATATCC
ATCAGTAATGAAGAGCCAACATTTTACCTATTCTGTGCAAACTGAAATCCTGTCCCTCTGCGAG
ATCATGAGAACCTGAAAACTCTGGGTGAAGATTGACCTTGACTTACTCTCTAGAGTACCTGGCCACAG
CTCACTCCATGCAGCACCTGCCAAGCCAGACCACAAGGAGACTGCCACAAAACCAAGCGTCAGACAGCT
GTCACAGCTGTGGAGAAACCAGCCCTAAGGGCAAACGTAAAGCACAAGCCAATAGAAGTTGACAGAGAAGA
TCCTGAGAAGAAGCAGCGCTGGAGGAGGCCACAACATCTGCTTGCTCCCTCCTTGATCTCACCAGC
CCCACCCACAAGCCTCCCAACTAGAGAAAAAATTCATCCAGGAGAGCAAAATAGAAGAAAGGAAGAA
AAACTATTTCTCCTCCACTTTCCCACTGCCAGAGGACCCTCCACGCCGAGAAATGTCAGTGGCAATA
ATGGTCCCTTTGGTCAAGACAAAAACATCGCCATGACTGGACAAATCACATCTACCAACCTAAGAGAAC
TGAAGGCAAAATCTGTGCTACTTTCAAAGGGATATCGGTAATGAGGGAGACTCCAAAAAGGCATCC
TCTGCCACCATCACTGTCAACAACTGCTATTGCCACTGCTACTGTACTGCTACTGCCATTGTACCA
CCACTGTCACAGTACTGCCACCGCCAGGCCACCACCACAACACTACTACCCTACCATTCCACCATCAG
CCTTACCATCACTACTGGCCTCATGGATAGCAGTCACTGGAGATGACGTCCTGGGCGGCTCTGCCCTT
CTATCCAGCAGCAGCACTAATGTCCGGAGACCAAGCTCACTTTTGATGACTCGGTTTACAATGCTGATT
ATTACATGCAAGAAGCTAAGAAGCTGAAGCACAAGCTGATGCACTGTTGAGAAATTTGGCAAAGCTGT
GAATTATGCTGATGCCGCCCTCTCCTTCACTGAATGTGGCAATGCCATGGAACGCGACCCTCTGGAAGCA
AAGTCCCATAACCATGTACTCTGAGACTGTGGAGCTCCTCAGGTATGCAATGAGGCTGAAGAATTTG
CAAGTCCCTTGGCTTGGATGGGACAAAAAGCTAGCAGTACTATGCTACCGATGTTTACTACTCCTCTA
TTTGAGAAATGTTAAGCTGAAGAAGGACCATGCTATGAAGTACTCCAGATCACTGATGGAATATTTAAG
CAAAATGCTTCAAAGTGCACAGATACCCTCTCCATGGGTAAGCAATGGAAGAACAACCTCCATCCCAG
TGTCTCTCAACAACGTCTCCCCATCAACGCAATGGGGAAGTGAACAATGGCCCAAGTACCATTCCCCA
GCGCATTACCACATGGCTGCCAGCCAGTCAACATCACTAGCAATGTGTTACGGGGCTATGAACACTGG
GATATGGCCGACAACTGACAAGAGAAAACAAAGAATTCTTTGGTGTCTGGACACGCTGATGGGCGCTC
TGACCCAGCACAGCATGACCAATCTTGTCCGCTACGTTCCGCAAGGACTGTGTTGGCTGCGCATCGA
TGCCCACTTGTTG

ACGCGTACGCGGCGGCTCGAGCAGAACTCATCTCAGAAGAGGATCTGGCAGCAATGATATCCTGGATT
ACAAGGATGACGACGATAAGGTTTAA

Protein Sequence: >RC212045 representing NM_002025
 Red=Cloning site Green=Tags(s)

MDLFDFFRDWLEQQCHYEQDRSALKKREWERNQEVQEDDLFSSGFDLFGEPYKVAEYTNKGDALANR
 VQNTLGNYDEMKNLLTNHSNQNHLLVGIPKNSVPQNPNNKNEPFFPEQKNRIIPPHQDNTHPSAPMPPPS
 VVILNSTLIHSNRKSKPEWSRDSHPSTVLASQASGQPNKMQLTQDQSQAKLEDFVYPAEQPQIGEVE
 ESNPSAKEDSNPNSSGEDAFKEIFQSNSPEESEFAVQAPGSPLVASSLLAPSSGLSVQNFPPGLYCKTSM
 GQQKPTAYVRPMDGQDQAPDISPTLKPSIEFENSFQNL SFGTLLDGKPSAASSKTKLPKFTILQTSEVSL
 PSDPSCVEEILREMTSHWPTPLTSMHTAGHSEQSTFSIPGQESQHLTPGF TLQKWNDDPTTRASTKSVSFK
 SMLEDDLKLSSEDDLEPVKLT LTQCTATELYQAVEKAKPRNNPVNPLATPQPPPAVQASGGSGSSSES
 ESSSESDDTESSTTDESNEAPRVATPEPEPPSTNKWQLDKWLNKVT SQNKSFCGPNETPMETISLPP
 PIIQPMEVQMVKVNASQVPAEPKERPLLSLIREKARPRPTQKIPETKALKHKLSTTSETVSQRTIGKKQ
 PKKVEKNTSTDEFTWPKPNITSSTPKEKESVELHDPGRGRNKATAHKPAPRKEPRNIPLAPEKKKYRGP
 GKIVPKSREFIETDSSTSDSNTDQEETLQIKVLPPCIISSGNTAKSKEICGASLTLSTLMSSSGSNNLS
 ISNEEPTFSPIPVMQTEILSPLRDHENLKNLWVKIDLDLLSRVPGHSSLHAAPAKPDHKETATPKKRQTA
 VTAVEKPAPKGRKHKPIEVAEKIPEKKQRL EEATTICLLPPCISPAPPHKPPNTRENNSRRANRRKKEE
 KLFPPPLSPLPEDPPRRRNVSGNNGPFGQDKNIAMTGQITSTKPKRTEGKFCATFKGISVNEGDTPKKAS
 SATITVTNTAIATATVTATAIVTTTTVTATATATATTTTTTTTTISTITSTITGLMDSSHLEMTSWAALPL
 LSSSSTNVRPKLTFDSSVHNADYYMQEAKLKHKADALFEKFGKAVNYADAALSFTECGNAMERDPLEA
 KSPYTMSETVELLRYAMRLKNFASPLASDGDKKLAVLCYRCLSLLYLRMFKLKKDHAMKYSRSLMEYFK
 QNASKVAQIPSPVWSNGKNTSPVSLNNVSPINAMGNCNNGPVTIPQRIHMAASHVNITSNVLRGVEYHW
 DMADKL TRENKEFFGDLDTL MGPLTQHSSMTNLVRYVVRQGLCWL RIDAHLL

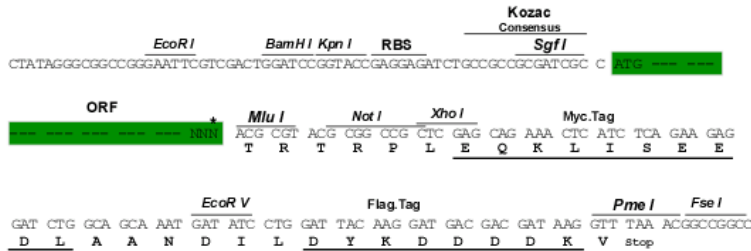
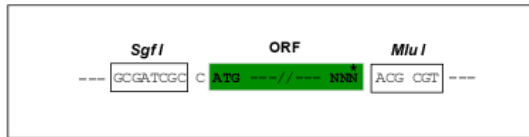
TRTRPLEQKLISEEDLAANDILDYKDDDDKV

Restriction Sites:

Sgfl-MluI

Cloning Scheme:

Cloning sites used for ORF Shuttling:



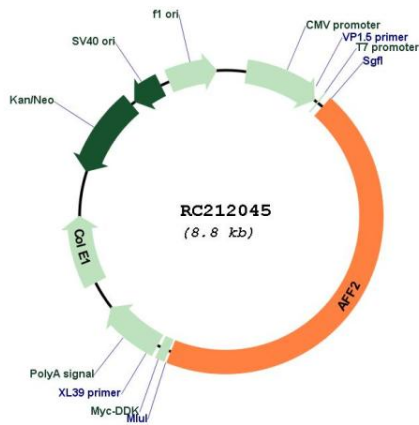
* The last codon before the Stop codon of the ORF

ACCN: NM_002025

ORF Size: 3933 bp

OTI Disclaimer:	The molecular sequence of this clone aligns with the gene accession number as a point of reference only. However, individual transcript sequences of the same gene can differ through naturally occurring variations (e.g. polymorphisms), each with its own valid existence. This clone is substantially in agreement with the reference, but a complete review of all prevailing variants is recommended prior to use. More info
OTI Annotation:	This clone was engineered to express the complete ORF with an expression tag. Expression varies depending on the nature of the gene.
Components:	The ORF clone is ion-exchange column purified and shipped in a 2D barcoded Matrix tube containing 10ug of transfection-ready, dried plasmid DNA (reconstitute with 100 ul of water).
Reconstitution Method:	<ol style="list-style-type: none">1. Centrifuge at 5,000xg for 5min.2. Carefully open the tube and add 100ul of sterile water to dissolve the DNA.3. Close the tube and incubate for 10 minutes at room temperature.4. Briefly vortex the tube and then do a quick spin (less than 5000xg) to concentrate the liquid at the bottom.5. Store the suspended plasmid at -20°C. The DNA is stable for at least one year from date of shipping when stored at -20°C.
RefSeq:	NM_002025.1 , NP_002016.1
RefSeq Size:	13695 bp
RefSeq ORF:	3936 bp
Locus ID:	2334
UniProt ID:	P51816
Cytogenetics:	Xq28
Domains:	AF-4
Protein Families:	Druggable Genome
MW:	144.6 kDa
Gene Summary:	This gene encodes a putative transcriptional activator that is a member of the AF4\FMR2 gene family. This gene is associated with the folate-sensitive fragile X E locus on chromosome X. A repeat polymorphism in the fragile X E locus results in silencing of this gene causing Fragile X E syndrome. Fragile X E syndrome is a form of nonsyndromic X-linked cognitive disability. In addition, this gene contains 6-25 GCC repeats that are expanded to >200 repeats in the disease state. Alternate splicing results in multiple transcript variants.[provided by RefSeq, Jul 2016]

Product images:



Circular map for RC212045