

Product datasheet for RC212042

ARHGEF10L (NM_018125) Human Tagged ORF Clone

Product data:

Product Type:	Expression Plasmids
Product Name:	ARHGEF10L (NM_018125) Human Tagged ORF Clone
Tag:	Myc-DDK
Symbol:	ARHGEF10L
Synonyms:	GrinchGEF
Mammalian Cell Selection:	Neomycin
Vector:	pCMV6-Entry (PS100001)
E. coli Selection:	Kanamycin (25 ug/mL)
ORF Nucleotide Sequence:	>RC212042 representing NM_018125 Red=Cloning site Blue=ORF Green=Tags(s)

TTTTGTAATACGACTCACTATAGGGCGGCCGGAATTCGTCGACTGGATCCGGTACCGAGGAGATCTGCC
GCC**CGATCGCC**

ATGGCTTCCTCCAACCTCCTCCACAGCCTGCCATAGGAGATCAGCTGGTTCCAGGAGTCCCAGGCCCT
CCTCTGAGGCAGAGGACGACCCAGGAGAGGCGTTTGTGTTTATGACAGTGTATGAAGAGGACACCAG
CGCAGCCCTGGGCGTCCCAGCCTTGCTCCTGAGAGGGACACAGACCCCACTGATCCACTTGGACTCC
ATCCCTGTCACTGACCCAGACCCAGCAGCTGCTCCACCCGGCACAGGGGTGCCAGCTGGGTGAGCAATG
GGGATGCAGCGGACGCAGCCTTCTCCGGGGCCCGCACTCCAGCTGGAAGCGGAAGAGTCCCGTCCGAT
TGACCGGTTCACTTTCCCGCCCTGGAAGAGGATGTGATTTATGACGACGTCCTCCGAGAGCCAGAT
GCGCATCAGCCCGGGCAGAGAGGAACCTGCTCTACGAGGATGCGCACCCGGGCTGGGGCCCTCGGCAGG
CGGAGGACCTAGGCTGGAGCTCCAGTGAGTTCGAGAGCTACAGCGAGGACTCGGGGGAGGAGGCCAAGCC
GGAGGTCGAGGTCGAGCCCGCAAGCACCAGTGTCTTCCAGCCCAAGCTTTCTCCAGACTGACTAGG
CTAAAGGAGAGATACGCCAGGACTAAGAGAGACATCTTGGCTTTGAGAGTTGGGGGAGAGACATGCAGG
AGCTGAAGCACAAGTACGATTGTAAGATGACCCAGCTCATGAAGGCCCAAGAGCGGGACCAAGGATGG
GCTGGAGAAGACACGGATGGCCGTGATGCGCAAAGTCTCCTTCTGCACAGGAAGGACGTCCTCGGTGAC
TCGGAGGAGGAGACATGGGGCTCCTGGAGTCAAGCGTTTCGGACATCAAGCCCAAGCCAGCCAGACTGG
GCCCCATGCCAGAGGGCCTGAGCCCTCAGCAGGTGGTCCGGAGGCATATCCTGGGCTCCATCGTGCAGAG
CGAAGGCAGCTACGTGGAGTCTCTGAAGCGGATACTCCAGGACTACCGCAACCCCTGATGGAGATGGAG
CCCAAGGCCTGAGCGCCCGCAAGTGCCAGGTGGTGTCTTCCGCGTGAAGGAGATCCTGCACTGCCACT
CCATGTTCCAGATCGCCCTGTCTCCCGCTGGCTGAGTGGGATCCACCGAGAAGATCGGGGACCTCTT
CGTGGCCTCGTTTTCAAGTCCATGGTGTAGATGTGTACAGTACTACGTGAACAACCTTACCAGTGCC
ATGTCCATCATCAAGAAGCCTGCCTCACCAAGCCTGCCTTCTCGAGTTCCTCAAGCGACGGCAGGTGT
GCAGCCAGACCGTGTACCCCTCTACGGGCTGATGGTCAAGCCCATCCAGAGTTCACACAGTTCATACT
CCTGCTCAGGACATGCTGAAGAACACCCCAAGGGCCATCCGGACAGGCTGTCGCTGCAGCTGGCCCTC



ACAGAGCTGGAGACGCTGGCTGAGAAGCTGAACGAGCAGAAGCGGCTGGCTGACCAGGTGGCTGAGATCC
AGCAGCTGACCAAGAGCGTCAAGTACCGCAGCAGCCTCAACAAGCTGTTGACCTCAGGCCAGCGGAGCT
GCTCCTGTGTGAGACGTTGACGGAGACCGTGTACGGTACCGCGGGCAGCTAATTAAGTCCAAGGAGCGT
CGGGTCTTCTGCTCAACGACATGCTTGTCTGTGCCAACATCAACTTCAAGCCTGCCAACACAGGGGCC
AGCTGGAGATCAGCAGCCTGGTGGCCCTGGGGCCCAAGTATGTGGTGAAGTGAACACGGCGCTGCCCA
GGTGCAGGTGGTGGAGGTGGGCCAGGACGGTGGCACCTATGACAAGGACAATGTGCTCATCCAGCACTCA
GGCGCCAAGAAGGCCTCTGCCTCAGGGCAGGCTCAGAATAAGGTGTACCTCGGCCCCACGCCTTCC
AGGAGCTGCAGGACCTGCAGAAGGACCTGGCCGTGGTGGAGCAGATCACGCTTCTCATCAGCACGCTGCA
CGGCACCTACCAGAACCTGAACATGACTGTGGCTCAAGACTGGTGCCTGGCCCTGCAGAGGCTGATGCGG
GTGAAGGAGGAAGAGATCCAAGTGGCCAAAGTGGCGTCTCAGGCTCCTGCTTCTGGGAAACCCGACA
AGTCCGGCCGCCATTAGCTTCATGGTGGTTTTATCACCCCAACCCCTGAGCAAGATTTCTGGGT
CAACAGGTTACATTTGGCCAAAATCGGACTCCGGGAGGAGAACCAGCCAGGCTGGCTATGCCCGGATGAG
GACAAGAAGAGCAAAGCCCCATTCTGGTGGCCGATCCTGGCCTGTGCATCCCTGCCTTCTCTCCCGG
CACTCAGCCTGCAGCTTGGGGCCCTGGTCCACAGTCTGTCAACTGTCCCCTGTGGGTTTCTCAGCAGT
CAGCACCTCCCTCCACAGGGCTACCTCTGGGTGGGGGGCGGACAGGAAGGCGCAGGGGGCCAGGTGGAA
ATCTTTTCTTGAACCGGCCCTCGCCCCCACCCTCAAGTCTTCCACTGGCAGCCCTGTGCTCTGCA
TGGAGTATATCCCGAGCTGGAGGAGGAGGCGGAGAGCAGAGACGAGAGCCGACAGTTGCTGACCCCTC
GGCCACGGTGCATCCAACCATCTGCCTCGGGCTCCAGGATGGCAGCATCCTCTACAGCAGTGTGGAC
ACTGGCACCCAGTGCCTGGTGGAGCTGCAGGAGCCAGGCTGCAGCCTGTGCTCTGCCTGCGACACAGCC
CCTTCCACCTGCTCGCTGGCCTGCAGGATGGGACCCTTGTGCTTACCCTCGACCAGCGGAGGTGTCT
GTGGGACTGGAGAGCCCTCCCGTGTGCCTGACTGTGGGGCCCGGCCTGTCCGACCCCTGTTGAGCCTG
GAGGATGCCGTGTGGGCCAGCTGTGGGCCCGGGTCACTGTCTTGAAGCCACCACCCTGCAGCCTCAGC
AAAGTTTCGAGGCGCACCAGGACGAGGAGTGCAGTGCACACATGGTGAAGGCGGGCAGCGGCTGTG
GATGGCCTTCTCCTCCGGCACCTCCATCCGCCTTCCACACTGAGACCCTGGAGCATCTGCAAGAGATC
AACATCGCCACCAGGACCACCTTCTCCTGCCAGGCCAGAAGCACTTGTGTGTACCAGCCTCCTGATCT
GCCAGGTCTGCTCTGGGTGGGCACTGACCAGGTGTGCATCGTCTGCTGCCCGTGCCTCGGCTGGAAGG
CATCCCCAAGATCACAGGAAAGGCATGGTCTCACTCAACGGGCACTGTGGGCTGTGGCCTTCTGGCT
GTGGCTACCAGCATCCTGGCCCTGACATCCTGCGGAGTGACCAGGAGGAGGCTGAGGGGCCCGGGCTG
AGGAGGACAAGCCAGACGGGCAGGCACACGAGCCATGCCGATAGCCACGTGGGCCGAGAGCTGACCCG
CAAGAAGGGCATCCTTGCAGTACCGCTGCGCTCCACCGCACACCTCCCGGGCCGCTGCTCTCCATG
CGGGAGCCGGCGCTGCTGATGGCGCAGCTTTGGAGCACAGCGAGGAGGACGGCTCCATTTACGAGATGG
CCGACGACCCCGACATCTGGGTGCGCAGCCGGCCCTGCGCCCGGACGCCACCGCAAGGAGATTTGCTC
TGTGGCCATCATCTCCGGCGGGCAGGGCTACCGCAACTTTGGCAGCGCTCTGGGACGAGTGGGAGGCGAG
GCCCGTGTGGGAGACGGACAGCACCTCCTCATCTGGCAGGTGCCCTTGTATGCTA

ACGCGTACGCGGCCGCTCGAGCAGAACTCATCTCAGAAGAGGATCTGGCAGCAAATGATATCCTGGATT
ACAAGGATGACGACGATAAGGTTTAA

Protein Sequence: >RC212042 representing NM_018125
 Red=Cloning site Green=Tags(s)

MASSNPPQPAIGDQLVPGVPGPSSEAEEDDPGEAFEFDDSDDEEDTSAALGVPSLAPERDTPPLIHLDS
 IPVTDPPAAAPPPTGVPAAWVNSGDAADAASFSGARHSSWKRKSSRRIDRF TFPAL EEDVIYDDVPCESPD
 AHQPGAERNLLYEDAHRAGAPRQAEDLWSSSEFEYSSEDSGEEAKPEVEVEPAKHRVVSFQPKLSPDLTR
 LKERYARTKRDILALRVGGRDMQELKHKYDCKMTQLMKAASGKTDGLEKTRMAVMRKVSFLHRKDLVLD
 SEEDMGLLEVSVDIKPPAPELGPMEGLSPQQVRRHILGSI VQSEGSYVESLKRILQDYRNPLMEME
 PKALSARKCQVVFFRVKEILHCHSMFQIALSSRVAEWDSTEKIGDLFVASF SKSMVLDVYSYVNNFTSA
 MSIIKKA CLTKPAFLEFLKRRQVCSPDRVTLYGLMVKPIQRFPQFILLQLDMLKNTPRGHPDRLSLQLAL
 TELETLAEKLNQKRLADQVAEIQQLTKSVSDRSSLNKLLTSGQRQLL CETLTETVYGDRGQLIKSKER
 RVFLLNDMLVCANINFKPANHRGQLEISSLVPLGPKYVVKWNTALPQVQVVEVGQDGGTYDKDNVLIQHS
 GAKKASASGQAQNKVYLGPRLFQELQDLQKDLAVVEQITLLISTLHGTYQNLNMTVAQDWCLALQRLMR
 VKEEEIHSANKCRLRLLLPGKPKSGRPI SFMVVFI TPNPLSKISWVNRHLAKIGLREENQPGWLCPE
 DKKSKAPFWCPI LACCIPAFSSRALSLQLGALVHSPVNCPLLGFSAVSTSLPQGYLVWGGGQEGAGGQVE
 IFSLNRPSPRTVKSFPLAAPVLCEYIPELEEEAESRDESPTVADPSATVHPTICLGLQDGSILLYSSVD
 TGTQCLVSCRSPGLQPVLCLRHSPFHLLAGLQDGT LAAYPRTSGGVLWDLESPPVCLTVGPGVVRTLLSL
 EDVAVASCGRPVTVLEATTLQPQQSFEAHQDEAVSVTHMVKAGSGVWMAFSSGTSIRLFHTETLEHLQEI
 NIATR TFFLLPGQKHL CVTSL LICQGLLVGTDQGVIVLLVPVPRLEGIPKITGKGMVSLNGHCGPVAFLA
 VATSILAPDILRSDQEEAEGPRAEEDKPDGQAHEPMPD SHVGRELTRKKGILLQYRLRSTAHLPGLLSM
 REPAPADGAALHSEEDGSIYEMADDPDIWVRSRRCARDHRKEICSVAIISGGQGYRNFSGALGSSGRQ
 APCGETDSTLLIWQVPLML

TRTRPLEQKLI SEEDLAANDILDYKDDDDKV

Chromatograms: https://cdn.origene.com/chromatograms/mk8026_h06.zip

Restriction Sites: SgfI-MluI

Cloning Scheme:

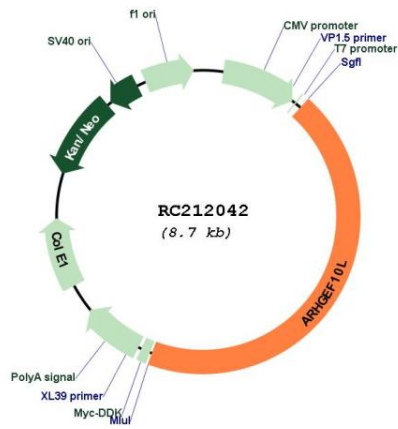


ACCN: NM_018125

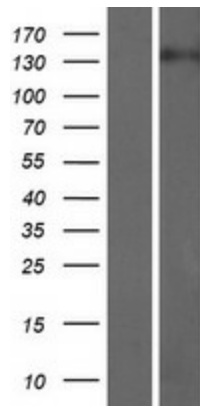
ORF Size: 3837 bp

OTI Disclaimer:	The molecular sequence of this clone aligns with the gene accession number as a point of reference only. However, individual transcript sequences of the same gene can differ through naturally occurring variations (e.g. polymorphisms), each with its own valid existence. This clone is substantially in agreement with the reference, but a complete review of all prevailing variants is recommended prior to use. More info
OTI Annotation:	This clone was engineered to express the complete ORF with an expression tag. Expression varies depending on the nature of the gene.
Components:	The ORF clone is ion-exchange column purified and shipped in a 2D barcoded Matrix tube containing 10ug of transfection-ready, dried plasmid DNA (reconstitute with 100 ul of water).
Reconstitution Method:	<ol style="list-style-type: none">1. Centrifuge at 5,000xg for 5min.2. Carefully open the tube and add 100ul of sterile water to dissolve the DNA.3. Close the tube and incubate for 10 minutes at room temperature.4. Briefly vortex the tube and then do a quick spin (less than 5000xg) to concentrate the liquid at the bottom.5. Store the suspended plasmid at -20°C. The DNA is stable for at least one year from date of shipping when stored at -20°C.
RefSeq:	NM_018125.4
RefSeq Size:	4502 bp
RefSeq ORF:	3840 bp
Locus ID:	55160
UniProt ID:	Q9HCE6
Cytogenetics:	1p36.13
MW:	140.2 kDa
Gene Summary:	This gene belongs to the RhoGEF subfamily of RhoGTPases. Members of this subfamily are activated by specific guanine nucleotide exchange factors (GEFs) and are involved in signal transduction. The encoded protein shows cytosolic distribution. Alternative splicing results in multiple transcript variants. [provided by RefSeq, Jun 2016]

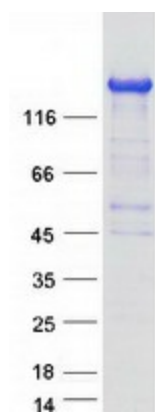
Product images:



Circular map for RC212042



Western blot validation of overexpression lysate (Cat# [LY413310]) using anti-DDK antibody (Cat# [TA50011-100]). Left: Cell lysates from untransfected HEK293T cells; Right: Cell lysates from HEK293T cells transfected with RC212042 using transfection reagent MegaTran 2.0 (Cat# [TT210002]).



Coomassie blue staining of purified ARHGEF10L protein (Cat# [TP312042]). The protein was produced from HEK293T cells transfected with ARHGEF10L cDNA clone (Cat# RC212042) using MegaTran 2.0 (Cat# [TT210002]).