

Product datasheet for RC212037

CTDSP1 (NM_021198) Human Tagged ORF Clone

Product data:

Product Type:	Expression Plasmids
Product Name:	CTDSP1 (NM_021198) Human Tagged ORF Clone
Tag:	Myc-DDK
Symbol:	CTDSP1
Synonyms:	NIF3; NLI-IF; NLIIF; SCP1
Mammalian Cell Selection:	Neomycin
Vector:	pCMV6-Entry (PS100001)
E. coli Selection:	Kanamycin (25 ug/mL)
ORF Nucleotide Sequence:	>RC212037 ORF sequence Red=Cloning site Blue=ORF Green=Tags(s)

TTTTGTAATACGACTCACTATAGGGCGGCCGGAATTCGTCGACTGGATCCGGTACCGAGGAGATCTGCC
GCC**CGATCGCC**

ATGGACAGCTCGGCCGTCATTACTCAGATCAGCAAGGAGGAGGCTCGGGGCCGCTGCGGGCAAAGGTG
ACCAGAAGTCAGCAGCTTCCCAGAAGCCCCGAAGCCGGGGCATCCTCACTCACTTTCTGCTGTGTCTG
CCGGGATGATGGGGAGGCCCTGCCTGCTCACAGCGGGCGCCCTGCTTGTGGAGGAGAATGGAGCCATC
CCTAAGCAGACCCAGTCCAATACCTGCTCCCTGAGGCCAAGGCCAGGACTCAGACAAGATCTGCGTGG
TCATCGACCTGGACGAGACCCTGGTGCACAGCTCCTTCAAGCCAGTGAACAACGGGACTTCATCATCCC
TGTGGAGATTGATGGGGTGGTCCACCAGGTCTACGTGTTGAAGCGTCTCACGTGGATGAGTTCCTGCAG
CGAATGGGCGAGCTCTTTGAATGTGTGCTGTTCACTGCTAGCCTCGCCAAGTACGCAGACCCAGTAGCTG
ACCTGCTGGACAAATGGGGGGCCTTCCGGGCCGCTGTTTCGAGAGTCTGCGTCTTCCACCGGGGAA
CTACGTGAAGGACCTGAGCCGGTTGGTTCGAGACCTGCGGCGGGTGTCTATCCTGGACAATTCACCTGCC
TCCTATGTCTTCCATCCAGACAATGCTGTACCGGTGGCCTCGTGGTTTGACAACATGAGTGACACAGAGC
TCCACGACCTCTCCCTTCTTCGAGCAACTCAGCCGTGTGGACGACGTACTCAGTGTCTCAGGCAGCC
ACGGCCAGGGAGC

ACGCGTACGCGGCCGCTCGAGCAGAACTCATCTCAGAAGAGGATCTGGCAGCAAATGATATCCTGGATT
ACAAGGATGACGACGATAAGGTTTAA



[View online »](#)

Protein Sequence: >RC212037 protein sequence
Red=Cloning site Green=Tags(s)

MDSSAVITQISKEEARGPLRGKGDQKSAASQKPRSRGILHSLFCCVCRDDGEALPAHSGAPLLVEENGAI
 PKQTPVQYLLPEAKAQSDKICVVIDLDELTVHSSFKPVNNADEFIIPVEIDGVVHQVYVLRPHVDFELQ
 RMGELFECVLFATSLAKYADPVADLLDKWGAFRARLFRESCVFHRGNVYKDL SRLGRDLRRVLILDNSPA
 SYVFHPDNAVPVASWFDNMSDTELDLLPFFEQLSRVDDVYSVLRQPRPGS

TRTRPLEQKLISEEDLAANDILDYKDDDDKV

Chromatograms: https://cdn.origene.com/chromatograms/mk6428_h09.zip

Restriction Sites: SgfI-MluI

Cloning Scheme:



ACCN: NM_021198

ORF Size: 783 bp

OTI Disclaimer: The molecular sequence of this clone aligns with the gene accession number as a point of reference only. However, individual transcript sequences of the same gene can differ through naturally occurring variations (e.g. polymorphisms), each with its own valid existence. This clone is substantially in agreement with the reference, but a complete review of all prevailing variants is recommended prior to use. [More info](#)

OTI Annotation: This clone was engineered to express the complete ORF with an expression tag. Expression varies depending on the nature of the gene.

Components: The ORF clone is ion-exchange column purified and shipped in a 2D barcoded Matrix tube containing 10ug of transfection-ready, dried plasmid DNA (reconstitute with 100 ul of water).

Reconstitution Method:

1. Centrifuge at 5,000xg for 5min.
2. Carefully open the tube and add 100ul of sterile water to dissolve the DNA.
3. Close the tube and incubate for 10 minutes at room temperature.
4. Briefly vortex the tube and then do a quick spin (less than 5000xg) to concentrate the liquid at the bottom.
5. Store the suspended plasmid at -20°C. The DNA is stable for at least one year from date of shipping when stored at -20°C.

RefSeq: [NM_021198.1](#), [NP_067021.1](#)

RefSeq Size: 2655 bp

RefSeq ORF: 786 bp

Locus ID: 58190

UniProt ID: [Q9GZU7](#)

Cytogenetics: 2q35

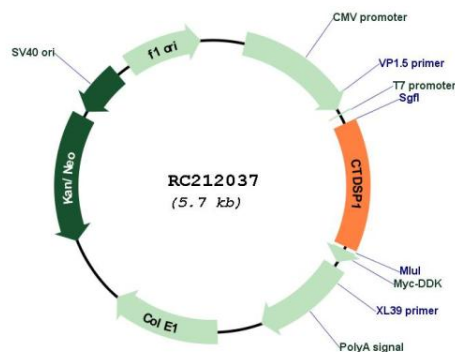
Domains: CPDc

Protein Families: Phosphatase

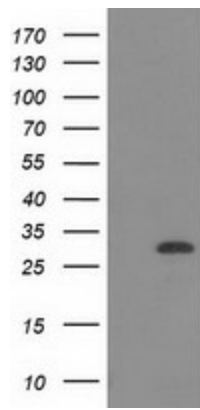
MW: 29.2 kDa

Gene Summary: This gene encodes a member of the small C-terminal domain phosphatase (SCP) family of nuclear phosphatases. These proteins play a role in transcriptional regulation through specific dephosphorylation of phosphoserine 5 within tandem heptapeptide repeats of the C-terminal domain of RNA polymerase II. The encoded protein plays a role in neuronal gene silencing in non-neuronal cells, and may also inhibit osteoblast differentiation. Alternatively spliced transcript variants encoding multiple isoforms have been observed for this gene. [provided by RefSeq, Oct 2011]

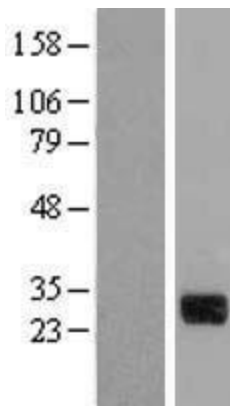
Product images:



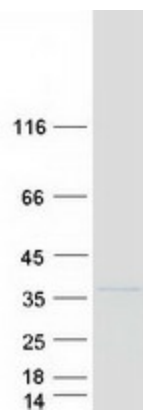
Circular map for RC212037



HEK293T cells were transfected with the pCMV6-ENTRY control (Cat# [PS100001], Left lane) or pCMV6-ENTRY CTDSP1 (Cat# RC212037, Right lane) cDNA for 48 hrs and lysed. Equivalent amounts of cell lysates (5 ug per lane) were separated by SDS-PAGE and immunoblotted with anti-CTDSP1(Cat# [TA502225]). Positive lysates [LY412037] (100ug) and [LC412037] (20ug) can be purchased separately from OriGene.



Western blot validation of overexpression lysate (Cat# [LY412037]) using anti-DDK antibody (Cat# [TA50011-100]). Left: Cell lysates from untransfected HEK293T cells; Right: Cell lysates from HEK293T cells transfected with RC212037 using transfection reagent MegaTran 2.0 (Cat# [TT210002]).



Coomassie blue staining of purified CTDSP1 protein (Cat# [TP312037]). The protein was produced from HEK293T cells transfected with CTDSP1 cDNA clone (Cat# RC212037) using MegaTran 2.0 (Cat# [TT210002]).