

Product datasheet for **RC212036**

EDF1 (NM_153200) Human Tagged ORF Clone

Product data:

Product Type: Expression Plasmids
Product Name: EDF1 (NM_153200) Human Tagged ORF Clone
Tag: Myc-DDK
Symbol: EDF1
Synonyms: CFAP280; EDF-1; MBF1
Mammalian Cell Selection: Neomycin
Vector: pCMV6-Entry (PS100001)
E. coli Selection: Kanamycin (25 ug/mL)
ORF Nucleotide Sequence: >RC212036 representing NM_153200
Red=Cloning site Blue=ORF Green=Tags(s)

TTTTGTAATACGACTCACTATAGGGCGGCCGGAATTCGTCGACTGGATCCGGTACCGAGGAGATCTGCC
GCC**CGATCGCC**

ATGGCCGAGAGCGACTGGGACACGGTGACGGTCTGCGCAAGAAGGGCCCTACGGCCGCCAGGCCAAAT
CCAAGCAGGCTATCTTAGCGGCACAGAGACGAGGAGAAGATGTGGAGACTTCCAAGAAATGGGCTGCTGG
CCAGAACAACAACATTCTATTACCAAGAACACGGCCAAGCTGGACCGGGAGACAGAGGAGCTGCACCAT
GACAGGGTGACCCTGGAGGTGGCAAGGTGATCCAGCAAGGTCGGCAGAGCAAGGGGCTTACGCAGAAGG
ACCTGGCCACGAAAATCAATGAGAAGCCACAGGTGATCGCGGACTATGAGAGCGGACGGGCCATACCCAA
TAACCAGGTGCTTGGCAAATCGAGCGGGCCATTGGTGAGTGCCCTCCACCCTTCGCCGGGTCCGC

ACGCGTACGCGGCCGCTCGAGCAGAACTCATCTCAGAAGAGGATCTGGCAGCAAATGATATCCTGGATT
ACAAGGATGACGACGATAAGGTTTAA

Protein Sequence: >RC212036 representing NM_153200
Red=Cloning site Green=Tags(s)

MAESDWDVTVLRKKGPTAAQAKSKQAILAAQRRGEDVETSKKWAAGQNKQHSITKNTAKLDRETEELHH
DRVTVLEVGKVIQQGRQSKGLTQKDLATKINEKPQVIADYESGRAIPNNQVLGKIERAIGCEPSTLRRVR

TRTRPLEQKLISEEDLAANDILDYKDDDDKV

Chromatograms: https://cdn.origene.com/chromatograms/ja1445_c10.zip

Restriction Sites: SgfI-MluI



[View online »](#)

Cloning Scheme:


ACCN: NM_153200

ORF Size: 417 bp

OTI Disclaimer: The molecular sequence of this clone aligns with the gene accession number as a point of reference only. However, individual transcript sequences of the same gene can differ through naturally occurring variations (e.g. polymorphisms), each with its own valid existence. This clone is substantially in agreement with the reference, but a complete review of all prevailing variants is recommended prior to use. [More info](#)

OTI Annotation: This clone was engineered to express the complete ORF with an expression tag. Expression varies depending on the nature of the gene.

Components: The ORF clone is ion-exchange column purified and shipped in a 2D barcoded Matrix tube containing 10ug of transfection-ready, dried plasmid DNA (reconstitute with 100 ul of water).

- Reconstitution Method:**
1. Centrifuge at 5,000xg for 5min.
 2. Carefully open the tube and add 100ul of sterile water to dissolve the DNA.
 3. Close the tube and incubate for 10 minutes at room temperature.
 4. Briefly vortex the tube and then do a quick spin (less than 5000xg) to concentrate the liquid at the bottom.
 5. Store the suspended plasmid at -20°C. The DNA is stable for at least one year from date of shipping when stored at -20°C.

RefSeq: [NM_153200.2](#), [NP_694880.1](#)

RefSeq Size: 538 bp

RefSeq ORF: 420 bp

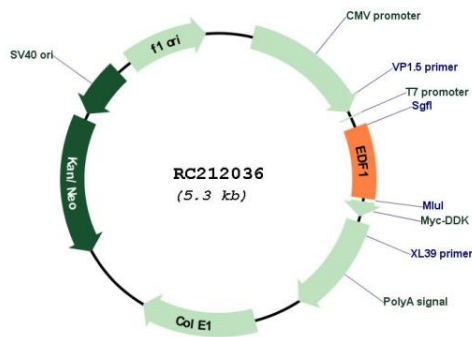
Locus ID: 8721

UniProt ID: [O60869](#)

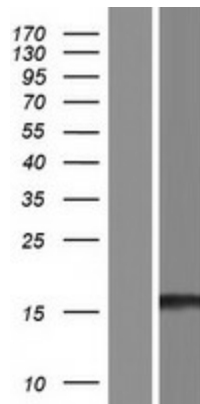
Cytogenetics: 9q34.3
Protein Families: Druggable Genome, Transcription Factors
MW: 15.3 kDa

Gene Summary: This gene encodes a protein that may regulate endothelial cell differentiation, lipid metabolism, and hormone-induced cardiomyocyte hypertrophy. The encoded protein has also been found to act as a transcriptional coactivator by interconnecting the general transcription factor TATA element-binding protein (TBP) and gene-specific activators. Alternate splicing results in multiple transcript variants. [provided by RefSeq, Jul 2013]

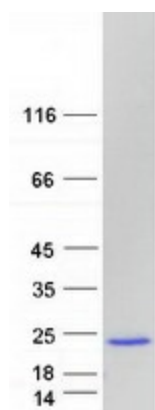
Product images:



Circular map for RC212036



Western blot validation of overexpression lysate (Cat# [LY407133]) using anti-DDK antibody (Cat# [TA50011-100]). Left: Cell lysates from untransfected HEK293T cells; Right: Cell lysates from HEK293T cells transfected with RC212036 using transfection reagent MegaTran 2.0 (Cat# [TT210002]).



Coomassie blue staining of purified EDF1 protein (Cat# [TP312036]). The protein was produced from HEK293T cells transfected with EDF1 cDNA clone (Cat# RC212036) using MegaTran 2.0 (Cat# [TT210002]).