

Product datasheet for **RC212034**

SLC9A7 (NM_032591) Human Tagged ORF Clone

Product data:

Product Type:	Expression Plasmids
Product Name:	SLC9A7 (NM_032591) Human Tagged ORF Clone
Tag:	Myc-DDK
Symbol:	SLC9A7
Synonyms:	MRX108; NHE-7; NHE7; SLC9A6
Mammalian Cell Selection:	Neomycin
Vector:	pCMV6-Entry (PS100001)
E. coli Selection:	Kanamycin (25 ug/mL)



[View online »](#)

ORF Nucleotide
Sequence:

>RC212034 representing NM_032591
 Red=Cloning site Blue=ORF Green=Tags(s)

TTTTGTAATACGACTCACTATAGGGCGGCCGGAATTCGTCGACTGGATCCGGTACCGAGGAGATCTGCC
 GCC**CGGATCGCC**

ATGGAGCCTGGTACCGCGCGCCCTGGCTCGGGTCTGGGCTACCGGGCGCCGCCCGCGGCTGCTGC
 TGCTGCCGCTGCTGCTGGGTTGGGGCTGCGAGTCGCGGCCGCGCCTCGGCCTCCTCCTGCGGGCGGC
 GCGGAGGACAGCAGCGCCATGGAGGAGCTCGCTACTGAGAAGGAGGCGGAGGAGGCCACCGCAAGAC
 AGCGTGAGCCTGCTCACCTTCATCTGCTGCTCACGCTCACCATCCTCACCATCTGGCTCTTCAAGCACC
 GCCGGGTGCGCTTTGTCACGAGACCGGGCTGGCCATGATCTATGGGCTCATCGTTGGGGTGATCCTGAG
 GTATGGTACCCCTGCTACCAGTGGCCGTGACAAATCACTCAGCTGCACTCAGGAAGACAGGGCCTCAGT
 ACCTTATTAGTGAATGTCAGCGGAAAGTCTTCGAATACACTCTGAAAGGAGAAATCAGTCTGGCAAGA
 TCAACAGCGTAGAGCAGAATGATGCTACGGAAGGTAACATTCGATCCAGAAGTATTTTTCAACATTCT
 TCTGCCTCCAATTATTTTTCATGCTGGATACAGCTTAAAGAAGAGACACTTTTTTCAGAAATCTTGGATCT
 ATACTGGCCTATGCCTTCTTGGGACTGCTGTTTCATGCTTCATTATTGAAATCTCATGTATGGTGTGG
 TGAAGCTCATGAAGATTATGGGACAGCTCTCAGATAAATTTTACTACACAGATTGTCTTTTTTGGAGC
 AATCATCTCTGCCACTGACCCAGTGACTGTGCTGGCGATATTTAATGAATTGCATGCAGACGTGGATCTT
 TACGCACTTCTTTTTGGAGAGAGCGTCCTAAATGATGCTGTTGCCATTGTACTGTCTCGTCTATTGTTG
 CCTACCAGCCAGCGGGACTGAACACTCACGCCTTTGATGCTGCTGCCTTTTTTAAGTCAGTTGGCATT
 TCTAGGTATATTTAGTGGCTCTTTACCATGGGAGCTGTGACTGGTGTTAATGCCAACGTGACTAAGTTT
 ACCAAACTGCACTGCTTCCCCCTGCTGGAGACGGCGTGTCTTCTCATGTCTGGAGCACGTTTCTCT
 TGGCAGAAGCCTGCGGATTTACAGGTGTTGTAGCTGTCTTTTTCTGGAATCACACAAGCTCATTACAC
 CTACAACAATCTGTCGGTGAATCAAGAAGTCGAACCAAGCAGCTCTTTGAGGTGTACATTTCTGGCA
 GAGAACTTCATCTTCTCTACATGGGCCTGGCACTGTTTACCTCCAGAAGCACGTTTTTCAGCCCCATT
 TCATCATCGGAGCTTTTGTGCCATCTTCTGGCAGAGCCGCGCACATCTACCCGCTCTCCTTCTCTCT
 CAACTGGGCAGAAGGCATAAGATTGGCTGGAATTTTCAACACATGATGATGTTTTCAGGCCTCAGGGGA
 GCAATGGCATTGCGTTGGCCATCCGTGACACGGCATCTATGCTCGCCAGATGATGTTCCAGCACCACC
 TTCTCATTGTGTTCTTCACTGTCTGGATCATTGGAGGAGGCACGACCCATGTTGTCATGGCTTAACAT
 CAGAGTTGGCGTCGAGGAGCCCTCCGAAGAGGACCAGAATGAACACCCTGGCAGTACTTCAGAGTTGGT
 GTTGACCCGATCAAGACCCACCACCAACAACGACAGCTTTCAAGTCTTACAAGGGGACGGCCAGATT
 CTGCCAGAGGAAACCGGACAAAACAGGAGAGCGCATGGATATTCAGGCTGTGGTACAGCTTTGATCACA
 TTACCTGAAGCCATCTCACACACAGTGGTCCCCCACTAACCACCACGCTCCCCGCTGGTGTGGCTTA
 CTAGCTCGATGTCTGACCAGTCCCAGGTGTACGATAACCAAGAGCCACTGAGAGAGGAAGACTCTGATT
 TCATCCTGACCGAAGGCGACCTGACATTGACCTACGGGGACAGCACAGTACTGCAAAATGGCTCCTCAAG
 TTCGCACACCGCTCCACGAGTCTGGAGGGCAGCCGGAACGAAGAGCAGCTCGGAGGAAGTGTGGAG
 CGAGACCTGGGAATGGGAGACCAGAAGTTTCGAGCCGGGGCACCCGCTAGTGTTCCTGGAAGATA
 ATGCT

ACGCGTACGCGGCCGCTCGAGCAGAACTCATCTCAGAAGAGGATCTGGCAGCAAATGATATCCTGGATT
 ACAAGGATGACGACGATAAGGTTTAA

Protein Sequence: >RC212034 representing NM_032591
 Red=Cloning site Green=Tags(s)

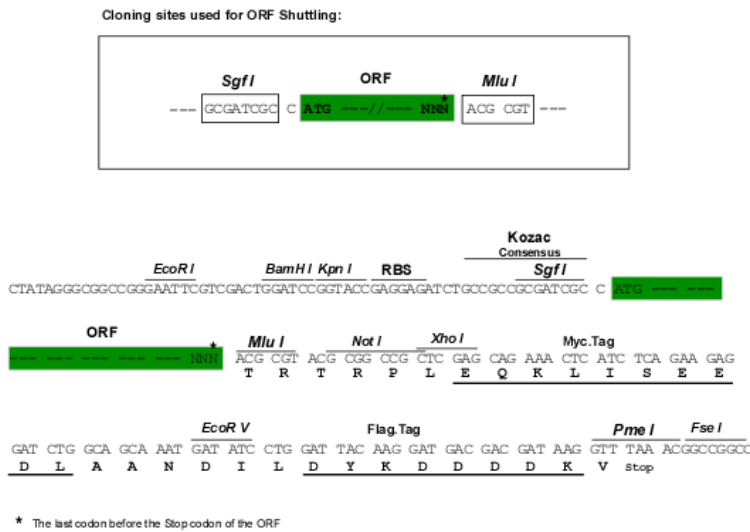
MEPGDAARPGSGRATGAPPPRLLLLPLLLGWGLRVAAAAASASSSGAAAEDSSAMEELATEKEAEESHQRQ
 SVSLLTFILLTLTLTLIWLFKHRRVRFHETGLAMIYGLIVGVILRYGTPATSGRDKLSCTQEDRAFS
 TLLVNVSGKFFEYTLKGEISPGKINSVEQNDMLRKVTFDPEVFFNILLPPIIFHAGYSLKKRHFRLGLS
 ILAYAFLTAVSCFIIGNLMYGVVVKMKIMGQLSDKFYYTDCLFFGAIISATDPVTVLAIIFNELHADVDL
 YALLFGESVLNDAVAIVLSSSIVAYQPAGLNTHAFDAAAFKSVGIFLGIFFSGSFTMGAVTGVNANVTKF
 TKLHCFPLELFFLMSWSTFLLAEACGFTGVVAVLFCGITQAHYTYNNLSVESRSRTKQLFEVLHFLA
 ENFIFSVMGLALFTFQKHVFSPIFIIGAFVAIFLGRAAHIYPLSFFNLGRRHKIGWNFQHMMFSGLRG
 AMAFALAIIRDASYARQMMFTTLLIVFFVWIIIGGGTPMLSWLNIRVGVVEEEDQNEHHWQYFRVG
 VDPDQDPPNDSFQVLQDGDPSARGNRTKQESAWIFRLWYSFDHNYLKPI LTHSGPPLTTTLPAWCGL
 LARCLTSPQVYDNQEPLREEDSDFILTEGDLTLTYGDSTVTANGSSSHTASTSLEGSRRTKSSSEEVL
 RDLGMGDQKVSRSRRTLVPFLEDNA

TRTRPLEQKLISEEDLAANDILDYKDDDDKV

Chromatograms: https://cdn.origene.com/chromatograms/mk8011_d09.zip

Restriction Sites: SgfI-MluI

Cloning Scheme:



ACCN: NM_032591

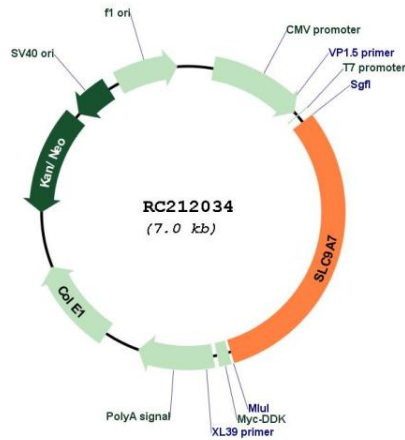
ORF Size: 2175 bp

OTI Disclaimer: The molecular sequence of this clone aligns with the gene accession number as a point of reference only. However, individual transcript sequences of the same gene can differ through naturally occurring variations (e.g. polymorphisms), each with its own valid existence. This clone is substantially in agreement with the reference, but a complete review of all prevailing variants is recommended prior to use. [More info](#)

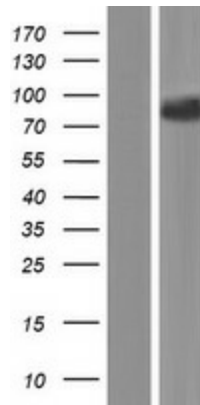
OTI Annotation: This clone was engineered to express the complete ORF with an expression tag. Expression varies depending on the nature of the gene.

Components:	The ORF clone is ion-exchange column purified and shipped in a 2D barcoded Matrix tube containing 10ug of transfection-ready, dried plasmid DNA (reconstitute with 100 ul of water).
Reconstitution Method:	<ol style="list-style-type: none">1. Centrifuge at 5,000xg for 5min.2. Carefully open the tube and add 100ul of sterile water to dissolve the DNA.3. Close the tube and incubate for 10 minutes at room temperature.4. Briefly vortex the tube and then do a quick spin (less than 5000xg) to concentrate the liquid at the bottom.5. Store the suspended plasmid at -20°C. The DNA is stable for at least one year from date of shipping when stored at -20°C.
RefSeq:	NM_032591.3
RefSeq Size:	2200 bp
RefSeq ORF:	2178 bp
Locus ID:	84679
UniProt ID:	Q96T83
Cytogenetics:	Xp11.3
Protein Families:	Druggable Genome, Transmembrane
MW:	80 kDa
Gene Summary:	This gene encodes a sodium and potassium/ proton antiporter that is a member of the solute carrier family 9 protein family. The encoded protein is primarily localized to the trans-Golgi network and is involved in maintaining pH homeostasis in organelles along the secretory and endocytic pathways. This protein may enhance cell growth of certain breast tumors. This gene is part of a gene cluster on chromosome Xp11.23. A pseudogene of this gene is found on chromosome 12. Alternate splicing results in multiple transcript variants. [provided by RefSeq, Mar 2012]

Product images:



Circular map for RC212034



Western blot validation of overexpression lysate (Cat# [LY410021]) using anti-DDK antibody (Cat# [TA50011-100]). Left: Cell lysates from untransfected HEK293T cells; Right: Cell lysates from HEK293T cells transfected with RC212034 using transfection reagent MegaTran 2.0 (Cat# [TT210002]).