

Product datasheet for **RC212024**

MTMR1 (NM_003828) Human Tagged ORF Clone

Product data:

Product Type:	Expression Plasmids
Product Name:	MTMR1 (NM_003828) Human Tagged ORF Clone
Tag:	Myc-DDK
Symbol:	MTMR1
Mammalian Cell Selection:	Neomycin
Vector:	pCMV6-Entry (PS100001)
E. coli Selection:	Kanamycin (25 ug/mL)



[View online »](#)

ORF Nucleotide Sequence:

>RC212024 representing NM_003828
 Red=Cloning site Blue=ORF Green=Tags(s)

TTTTGTAATACGACTCACTATAGGGCGGCCGGGAATTCGTCGACTGGATCCGGTACCGAGGAGATCTGCC
 GCC**CGGATCGCC**

ATGGACAGGCCGGCGGCCGGCGGGCTGCGAGGGCGGGGGCCGAACCCGGGGCCGGCGG
 GCGGCAGGAGGCCTCCTCGGGCCGGGGGGCGCCACCGCCGGCTCCCGGCAGCCAGCGTGGAGACCCCT
 GGACAGTCCCACAGGATCACATGTTGAATGGTGTAAACAGCTTATAGCTGCTACAATTTCTAGTCAGATT
 TCAGGTTCAAGTACATCAGAAAATGTGTCCAGAGATTACAAGGCTCTAAGGGATGAAAATAAGCTGGCAC
 AGATGGAAGAGGCTCCACTTTTCCAGGAGAATCAATTAAGCCATTGTGAAAGATGTATATCTG
 CCCATTTATGGGAGCAGTGAGTGAACCCTGACAGTGACGGACTTAAAGCTGACTTCAAAAATGTCGAG
 AGGGACCCGCATTTTATCCTTGATGTTCCCTTGGAGTGATCAGCAGAGTGGAGAAGATTGGAGCACAGA
 GCCATGGAGACAATTCCTGTGGTATAGAGATAGTGTGCAAGGATATGAGGAACCTGCGGCTTGCTTATAA
 ACAGGAAGAACAGAGTAACTAGGGATATTTGAAAACCTCAACAACATGCATTTCTCTTCTAACGGA
 CAGGCACTATTTGCATTCAGCTATAAAGAAAAATTTCCAATTAATGGCTGAAAAGTTTATGATCCAGTAT
 CTGAATATAAGAGACAGGGCTTGCCAAAATGAGAGTTGAAAATATCCAAAATAAACAGTAATTTATGAGTT
 CTGTGACACCTACCCTGCCATCATTGTTGTGCCAACTAGTGTAAAAGATGATGACCTTTCAAAAAGTGGCA
 GCTTTTCGAGCAAAGGCAGAGTCCCTGTGTTGTGATGGATTCATCCGAAAAGTCAAGCAACGATTACCC
 GTTGCAGCCAGCCACTTGTGGTCCCAATGATAAGCGCTGCAAAGAGGATGAAAAATACTTGCAAACAAT
 AATGGATGCTAACGCACAGTCACACAAGCTTATCATCTTGTGCTCGACAAAACAGTGTGCTGATACC
 AACAAGACAAAGGGTGGAGGATATGAAAGTGAAGTGTACCCAAATGCAGAACTTGTGTTCTTGGAGA
 TCCACAACATTCATGTCATGCGAGAGTCACTACGCAAATTAAGAGAGATTGTGTACCCTTCGATCGATGA
 GGCGCGGTGGCTCTCAATGTGGATGGGACGCATTGGCTGGAATATATAAGGATGCTGCTTGTGGGGCA
 GTAAGAATTGCTGATAAAAATAGAATCTGGGAAAACATCTGTGGTGGTGCATTGCAGCGACGGTTGGGACC
 GAACAGCCAGCTCACATCTCTGGCTATGCTAATGTTGGACAGTACTACAGGACCATAAAGGATTTGA
 AACTCTCGTAGAAAAGGAGTGGATAAGCTTTGGACACAGGTTTGCAGTGGGATGTTGGCAATGACAAGGC
 AACCATGCGGATGCTGACCGATCTCCATATTTCTGCAGTTTGTGATTGTGTTGGCAATGACAAGGC
 AGTTTCTTCAGATTCGAGTTTAAAGAGCTATTCTTGATTACAATTTGGATCACCTTTATAGCTGTCT
 TTTTGGGACCTTTTGTGCAACTGTGAACAGCAGCGATTCAAAGAGGATGTATATACAAAGACGATATCT
 TTATGGTGTATATCAATAGCCAGCTAGACGATTTTCTAATCCCTTCTTTGTGAATTATGAAAACCACG
 TGTATATCCTGTTGCTAGTCTGAGTCATTTGGAATTGTGGGTAATTTATGTACGATGGAATCCACG
 GATGAGACCTCAGATGCCATTACCCAGAACTCAAGGAGCTGTGGCCGTGAGGGCGGAGCTGCAGAAG
 CGTGTGGAGGGCCTACAGCGGGAGGTGGCCACGCGCGCTCTCATCCTCATCTGAGCGGGGCTCCTCGC
 CCTCCCACTCCGCCACCTCCGTCCACACCTCGGTC

ACGCGTACGCGGGCCGCTCGAGCAGAACTCATCTCAGAAGAGGATCTGGCAGCAAATGATATCCTGGATT
 ACAAGGATGACGACGATAAGGTTTAA

Protein Sequence: >RC212024 representing NM_003828
Red=Cloning site Green=Tags(s)

```
MDRPAAAAAGCEGGGGPNPGPAGGRPPRAAGGATAGSRQPSVETLDSPTGSHVEWCKQLIAATISSQI
SGSVTSENVS RDYKALRDGNKLAQMEEAPLFPGESIKAIVKDV MYICPFMGAVSGTLTVTDFKLYFKNVE
RDPHFILDVPLGVISRVEKIGAQSHGDN SCGIEIVCKDMRNLRLAYKQEEQSKLGIFENLNKHAFPLSNG
QALFAFSYKEKFPINGWKVYDPVSEYKRQGLPNESWKISKINSNYEFCDTYPAIIIVVPTS VKDDDL SKVA
AFRAKGRVPVLSWIHPESQATITRCSQPLVGPNDKRC KEDEKYLQTIMDANAQSHKLIIFDARQNSVADT
NKTKGGGYESESAYPNAELVFLEIHNIHVMRESLRKLKEIVYPSIDEARWLSNVDGTHWLEYIRMLLAGA
VRIADKIESGKTSVVVHCSGDWDRTAQLTSLAMLMLDSYRTIKGFETLVEKEWISFGHRFALRVGHGND
NHADADRSPIFLQFVDCVQMQTRQFP SAFEFNELFLITILDHLYSCLFGTFLCNCEQQRKEDVYTKTIS
LWSYINSQLDEFNPFVNYENHVL YPVASLSHLELWVNYVVRWNPRMRPQMPIHQNLKELLAVRAELQK
RVEGLQREVATRAVSSSSERGS SPSHSATSVHTSV
```

TRTRPLEQKLISEEDLAANDILDYKDDDDKV

Chromatograms: https://cdn.origene.com/chromatograms/mk8008_a11.zip

Restriction Sites: SgfI-MluI

Cloning Scheme:



ACCN: NM_003828

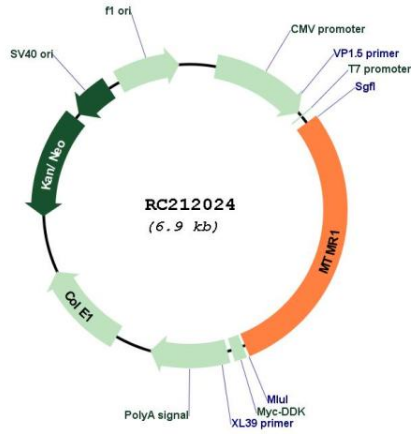
ORF Size: 1995 bp

OTI Disclaimer: The molecular sequence of this clone aligns with the gene accession number as a point of reference only. However, individual transcript sequences of the same gene can differ through naturally occurring variations (e.g. polymorphisms), each with its own valid existence. This clone is substantially in agreement with the reference, but a complete review of all prevailing variants is recommended prior to use. [More info](#)

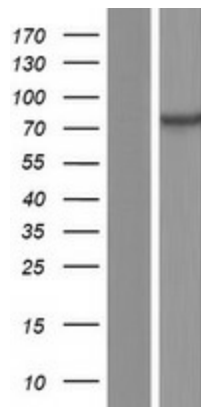
OTI Annotation: This clone was engineered to express the complete ORF with an expression tag. Expression varies depending on the nature of the gene.

Components:	The ORF clone is ion-exchange column purified and shipped in a 2D barcoded Matrix tube containing 10ug of transfection-ready, dried plasmid DNA (reconstitute with 100 ul of water).
Reconstitution Method:	<ol style="list-style-type: none">1. Centrifuge at 5,000xg for 5min.2. Carefully open the tube and add 100ul of sterile water to dissolve the DNA.3. Close the tube and incubate for 10 minutes at room temperature.4. Briefly vortex the tube and then do a quick spin (less than 5000xg) to concentrate the liquid at the bottom.5. Store the suspended plasmid at -20°C. The DNA is stable for at least one year from date of shipping when stored at -20°C.
Note:	Plasmids are not sterile. For experiments where strict sterility is required, filtration with 0.22um filter is required.
RefSeq:	NM_003828.4
RefSeq Size:	2754 bp
RefSeq ORF:	1998 bp
Locus ID:	8776
UniProt ID:	Q13613
Cytogenetics:	Xq28
Protein Families:	Druggable Genome, Phosphatase
Protein Pathways:	Fructose and mannose metabolism, Metabolic pathways, Riboflavin metabolism, Thiamine metabolism
MW:	74.5 kDa
Gene Summary:	This gene encodes a member of the myotubularin related family of proteins. Members of this family contain the consensus sequence for the active site of protein tyrosine phosphatases. Alternatively spliced variants have been described but their biological validity has not been determined. [provided by RefSeq, Jul 2008]

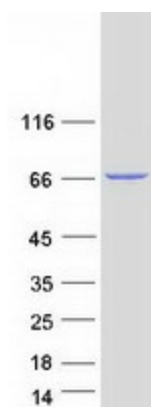
Product images:



Circular map for RC212024



Western blot validation of overexpression lysate (Cat# [LY418400]) using anti-DDK antibody (Cat# [TA50011-100]). Left: Cell lysates from untransfected HEK293T cells; Right: Cell lysates from HEK293T cells transfected with RC212024 using transfection reagent MegaTran 2.0 (Cat# [TT210002]).



Coomassie blue staining of purified MTMR1 protein (Cat# [TP312024]). The protein was produced from HEK293T cells transfected with MTMR1 cDNA clone (Cat# RC212024) using MegaTran 2.0 (Cat# [TT210002]).