

Product datasheet for **RC212015**

DISC1 (NM_018662) Human Tagged ORF Clone

Product data:

Product Type:	Expression Plasmids
Product Name:	DISC1 (NM_018662) Human Tagged ORF Clone
Tag:	Myc-DDK
Symbol:	DISC1
Synonyms:	C1orf136; SCZD9
Mammalian Cell Selection:	Neomycin
Vector:	pCMV6-Entry (PS100001)
E. coli Selection:	Kanamycin (25 ug/mL)



[View online »](#)

ORF Nucleotide
Sequence:

>RC212015 representing NM_018662
 Red=Cloning site Blue=ORF Green=Tags(s)

TTTTGTAATACGACTCACTATAGGGCGGCCGGGAATTCGTCGACTGGATCCGGTACCGAGGAGATCTGCC
 GCC**CGGATCGCC**

ATGCCAGGCGGGGTCTCAGGGCGCCACGCCCGCCGGCGGGCGGCGTGTAGCCACCGCGCAGGCA
 GCCGGGATTGCTTACCACCTGCAGCGTGCCTTCGGAGGCGCGGCTGGCACGGAGCCGGCTACATGAG
 AAGCTCGACAGGGCCTGGGATCGGGTCTTTCCCCAGCAGTGGGCACACTGTTCCGGTCCAGGAGGG
 GTGTCTGGCGAGGAGTCCACCACTCGGAGTCCAGGGCCAGACAGTGTGGCCTTGACTCGAGAGGCCTCT
 TGGTCCGGAGCCCTGTTCCAAGAGTGCAGCAGCCCTACTGTGACCTCTGTGAGAGGAACCTCGGCGCA
 CTTTGGGATTCAGCTCAGAGGTGGCACCAGATTGCCTGACAGGCTTAGCTGGCCGTGTGGCCCTGGGAGT
 GCTGGGTGGCAGCAAGAGTTTGCAGCCATGGATAGTTCTGAGACCCTGGACGCCAGCTGGGAGGCAGCCT
 GCAGCGATGGAGCAAGGCGTGTCCGGCCAGCAGGCTCTCTGCCATCAGCAGAGTTGAGTAGCAACAGCTG
 CAGCCCTGGCTGTGGCCCTGAGGTCCCCCAACCCTCCTGGCTCTCACAGTGCCTTTACCTCAAGCTTT
 AGCTTTATTTCGGCTCTCGCTTGGCTCTGCCGGGAACGTGGAGAAGCAGAAGGCTGCCACCATCCAGAG
 AGGCTGAGTCCCATTGCCAGAGCCCCAGGAGATGGGAGCCAAAGCTGCCAGCTTGGACGGGCTCACGA
 GGACCCGCGATGTCTCTCGGCCCTTCAGTCTTTGGCTACACGGGTCTCTGCAGACTTGGCCAGGCC
 GCAAGGAACAGCTCCAGGCCAGAGCGTGACATGCATTCTTACCAGACATGGACCCTGGCTCCTCCAGTT
 CTCTGGATCCCTCACTGGCTGGCTGTGGTGGTGTGGGAGCAGCGGCTCAGGGGATGCCACTCTTGGGA
 CACCCTGCTCAGGAAATGGGAGCCAGTGTGCGGGACTGCCTGCTGAGAAACCGGAGGCAGATGGAGGTA
 ATATCCTAAGATTAAACTTCAGAACTTCAGGAAGTGCAGTTGAGAATGATGATTATGATAAAGCTA
 AGACGTTACAACAAAGATTAGAAGACTTGAACAAGAGAAAATCAGCCTGCACCTTCAACTTCTTCAAG
 GCAGCCAGCTCTTAGCAGTTTCTGGGTACCTGGCAGCACAAAGTCCAGGCTGCCTTGGCCGTGGGGCC
 ACTCAGCAGGCCAGCGGAGATGACACCCACCCCCACTGAGAATGGAGCCGAGGCTGTTGGAACCCACTG
 CTCAGGACAGCTTGCACGTGTCCATCACGAGACGAGACTGGCTTCTTTCAGGAAAAGCAGCAGCTACAGAA
 AGAAATTTGAAGCTCTCCAAGCAAGGATGTTTGTGCTGGAAGCCAAAGATCAACAGCTGAGAAGGAAATA
 GAGGAGCAAGAGCAGCAACTCCAGTGGCAGGGCTGCGACCTGACCCACTGGTGGCCAGCTGTCCCTGG
 GTCAGCTGCAGGAGGTCAGCAAGCCTTGACAGCACCCCTGGCCTCAGCCGGTCAAGTCCCTTCCATGC
 AGAGCCACCGAAACCATAAGGAGCCTCCAGGAAAGAATAAAATCCCTCAACTTGTCACTTAAAGAAATC
 ACTACTAAGGTGTGTATGAGTGAGAAATCTGCAGCACCTGAGGAAGAAAGTTAACGATATTGAAACCC
 AACTACCAGCCTTGCTTGAAGCCAAAATGCATGCCATATCAGGAAACCATTTCTGGACGGCTAAAGACCT
 CACCGAGGAGATTAGATCATTAACATCAGAGAGAGAAGGGCTGGAGGGACTCCTCAGCAAGCTGTTGGTG
 TTGAGTTCCAGGAATGTCAAAAAGCTGGGAAGTGTAAAGAAGATTACAACAGACTGAGAAGAGAAGTGG
 AGCACCAGGAGACTGCCTATGAAACAAGTGTGAAGGAAAATACTATGAAGTACATGGAAACACTTAAAGAA
 TAAACTGTGCAGCTGCAAGTGTCCACTGCTTGGGAAAGTGTGGGAAAGCTGACTTGGAAAGCTTGTGATTG
 CTTATCCAGAGCCTACAGCTCCAGGAAGCCAGGGGAAGCCTGTCTGTAGAAGATGAGAGGCAGATGGATG
 ACTTAGAGGGAGCTGCTCCTCTATTCCCCCAGGCTCCACTCCGAGGATAAAAGGAAGACCCCTTTGAA
 GGTATTGGAAGAATGGAAGACTCACCTCATCCCCTCTCTGCAGTGTGCTGGAGGTGAACAGAAAGAGGAA
 TCTTACATCCTTTCTGCAGAACTTGGAGAAAAGTGTGAAGACATAGGCAAGAAGCTATTGTACTTGGAAAG
 ATCAACTTCACACAGCAATCCACAGTCATGATGAAGATCTCATTAGTCTCTCAGGAGGGAGCTCCAGAT
 GGTGAAGGAAACTCTGCAGGCCATGATCCTGCAGCTCCAGCCAGCAAAGGAGCGGGAGAAAAGAGAAGCT
 GCAGCTTCTGCATGACAGCTGGTGTCCACGAAGCACAAGCC

ACGCGTACGCGGCCGCTCGAGCAGAACTCATCTCAGAAGAGGATCTGGCAGCAAATGATATCCTGGATT
 ACAAGGATGACGACGATAAGGTTTAA

Protein Sequence: >RC212015 representing NM_018662
 Red=Cloning site Green=Tags(s)

MPGGGPQGAPAAAGGGGVSHRAGSRDCLPPAACFRRRRLARRPGYMRSSSTGPGIGFLSPAVGTLFRFPGG
 VSGEESHSESRARQCGLDSRGLLVRSVSKSAAAPT VTSVRGTSAHFGIQLRGGTRLPDRLSWPCGPGS
 AGWQQEFAAMDSSSETLDASWEAACSDGARRVRAAGSLPSAELSSNSCSPGCGPEVPPTPPGSHSAFTSS
 SFIRLSLGSAGERGEAEGCPPSREAE SHCQSPQEMGAKAASLDGPHEDPRCLSRPF SLLATRVSADLAQA
 ARNSSRPERDMHSLPMDPGSSSLDPSLAGCGDGS SSGDAHSWDTLLRKWEPVLRDCLLRNRRQMEV
 ISLRKLQKLQEDAVENDDYDKAETLQQRLEDLEQEKISLHFQLPSRQPALSSFLGHLAAQVQAALRRGA
 TQQASGDDTHTPLRMEPRLLEPTAQDSLHVSITRRDWLLQEKKQLQEIEALQARMFVLEAKDQQLRREI
 EEQEQLQWQGC DLTPLVGQLSLGQLQEVSKALQDTLASAGQIPFHAEPPE TIRSLQERIKSLNLSLKEI
 TTKVCMSEKFCSTLRKKVNDIETQLPALLEAKMHAISGNHFWTAKDL TEEIRSLT SEREGLEGLLSKLLV
 LSSRNVKLGSVKEDYNRLRREVEHQETAYETSVKENTMKYMETLKNKLCCKCPLLKGVWEADLEACRL
 LIQSLQLQEARGSLSVEDERQMDDEGAAPP IPPRLHSEDKRKTPLKVLEEWKTHLIPSLHCAGGEQKEE
 SYILSAELGEKCEDIGKLLLYLEDQLHTAIHSHDEDLIQSLRRELQMVKETLQAMILQLQPAKEAGEREA
 AACMNTAGVHEAQA

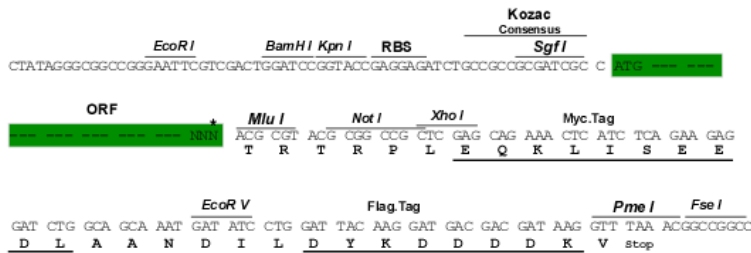
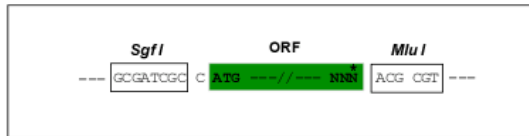
TRTRPLEQKLISEEDLAANDILDYKDDDDKV

Chromatograms: https://cdn.origene.com/chromatograms/mg2560_d02.zip

Restriction Sites: SgfI-MluI

Cloning Scheme:

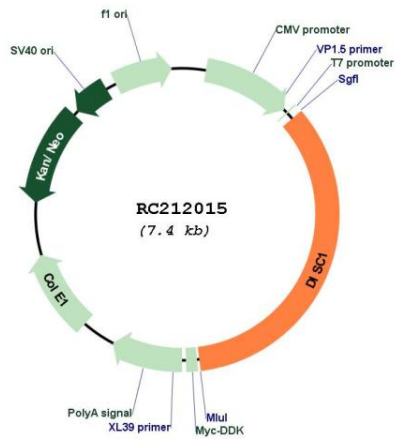
Cloning sites used for ORF Shuttling:



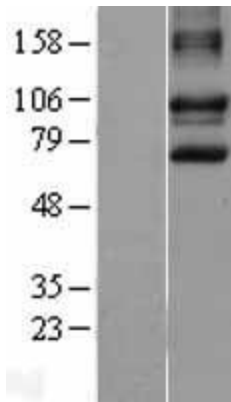
* The last codon before the Stop codon of the ORF

ACCN:	NM_018662
ORF Size:	2562 bp
OTI Disclaimer:	The molecular sequence of this clone aligns with the gene accession number as a point of reference only. However, individual transcript sequences of the same gene can differ through naturally occurring variations (e.g. polymorphisms), each with its own valid existence. This clone is substantially in agreement with the reference, but a complete review of all prevailing variants is recommended prior to use. More info
OTI Annotation:	This clone was engineered to express the complete ORF with an expression tag. Expression varies depending on the nature of the gene.
Components:	The ORF clone is ion-exchange column purified and shipped in a 2D barcoded Matrix tube containing 10ug of transfection-ready, dried plasmid DNA (reconstitute with 100 ul of water).
Reconstitution Method:	<ol style="list-style-type: none">1. Centrifuge at 5,000xg for 5min.2. Carefully open the tube and add 100ul of sterile water to dissolve the DNA.3. Close the tube and incubate for 10 minutes at room temperature.4. Briefly vortex the tube and then do a quick spin (less than 5000xg) to concentrate the liquid at the bottom.5. Store the suspended plasmid at -20°C. The DNA is stable for at least one year from date of shipping when stored at -20°C.
RefSeq:	NM_018662.3
RefSeq Size:	7069 bp
RefSeq ORF:	2565 bp
Locus ID:	27185
UniProt ID:	Q9NRI5
Cytogenetics:	1q42.2
MW:	93.4 kDa
Gene Summary:	This gene encodes a protein with multiple coiled coil motifs which is located in the nucleus, cytoplasm and mitochondria. The protein is involved in neurite outgrowth and cortical development through its interaction with other proteins. This gene is disrupted in a t(1;11) (q42.1;q14.3) translocation which segregates with schizophrenia and related psychiatric disorders in a large Scottish family. Alternate transcriptional splice variants, encoding different isoforms, have been characterized. [provided by RefSeq, Jul 2008]

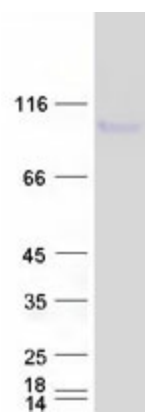
Product images:



Circular map for RC212015



Western blot validation of overexpression lysate (Cat# [LY402701]) using anti-DDK antibody (Cat# [TA50011-100]). Left: Cell lysates from untransfected HEK293T cells; Right: Cell lysates from HEK293T cells transfected with RC212015 using transfection reagent MegaTran 2.0 (Cat# [TT210002]).



Coomassie blue staining of purified DISC1 protein (Cat# [TP312015]). The protein was produced from HEK293T cells transfected with DISC1 cDNA clone (Cat# RC212015) using MegaTran 2.0 (Cat# [TT210002]).