

Product datasheet for RC211995

PRAS40 (AKT1S1) (NM_001098632) Human Tagged ORF Clone

Product data:

Product Type:	Expression Plasmids
Product Name:	PRAS40 (AKT1S1) (NM_001098632) Human Tagged ORF Clone
Tag:	Myc-DDK
Symbol:	PRAS40
Synonyms:	Lobe; PRAS40
Mammalian Cell Selection:	Neomycin
Vector:	pCMV6-Entry (PS100001)
E. coli Selection:	Kanamycin (25 ug/mL)
ORF Nucleotide Sequence:	>RC211995 representing NM_001098632 Red=Cloning site Blue=ORF Green=Tags(s)

TTTTGTAATACGACTCACTATAGGGCGGCCGGAATTCGTCGACTGGATCCGGTACCGAGGAGATCTGCC
GCCCGGATCGCC

ATGGCGTCGGGGCGCCCCGAGGAGCTGTGGGAGGCCGTGGTGGGGCCGCTGAGCGCTTCCGGGCCGGA
CTGGCACGGAGCTGGTGTCTGCTGACCGCGGCCCGCCGCCACCACCCGCCCCGGGCCCTGTGCCTATGC
TGCCCATGGTCGAGGAGCCCTGGCGGAGGCAGCGCCGTTGCCTCCACGACATCGCACTGGCCACAGG
GCTGCCACTGCTGCTCGGCTCCTGCGCCCCACCAGCACAGCCACCCAGTCCACACCCAGCCAC
CCCGGCCTACCTGGCCAGAGAGACAACGAGGAGGACGAGGATGAGCCACAGACAGAGACCTCCGG
GGAGCAGCTGGGCATTAGTGATAATGGAGGGCTCTTTGTGATGGATGAGGACGCCACCTCCAGGACCTT
CCCCCTTCTGTGAGTCAGACCCGAGAGTACAGATGATGGCAGCCTGAGCGAGGAGACCCCGCGGCC
CCCCACCTGCTCAGTGCCCCAGCCTCAGCCCTACCCACACAGCAGTACGCCAAGTCCCTGCCTGTGTC
TGTGCCCGTCTGGGGCTTCAAGGAGAAGAGGACAGAGGCGCGGTATCAGATGAGGAGAAATGGGCCGCC
TCTTCGCCGACCTGGACCGCATCGCGGCAGCATGCGCGCGTGGTGTGCGAGAGGCCGAGGACACCC
AGGTCTTCGGGGACCTGCCACGGCCGCGGCTTAACACCAGCGACTTCCAGAAGCTGAAGCGGAAATAT

ACGCGTACGCGGCCGCTCGAGCAGAACTCATCTCAGAAGAGGATCTGGCAGCAAATGATATCCTGGATT
ACAAGGATGACGACGATAAGGTTTAA



[View online »](#)

Protein Sequence: >RC211995 representing NM_001098632
Red=Cloning site Green=Tags(s)

MASGRPEELWEAVVGAERFRARTGTELVLLTAAPPPPPRPGPCAYAAHGRGALAEAARRCLHDIALAHR
 AATAARPPAPPAPQPPSPTSPPPRPTLAREDEDEDEPTETETETSGEQLGIDNGLFVMDATLQDL
 PPFCESDPESTDDGSLSEETPAGPPTCSVPPASALPTQQYAKSLPVSVPVWGFKEKRTEARSSDEENGPP
 SSPDLDRIAASMRALVLEAEDTQVFGDLPRPRLNTSDFQKLKRY

TRTRPLEQKLISEEDLAANDILDYKDDDDKV

Chromatograms: https://cdn.origene.com/chromatograms/mg4077_b01.zip

Restriction Sites: SgfI-MluI

Cloning Scheme:



ACCN: NM_001098632

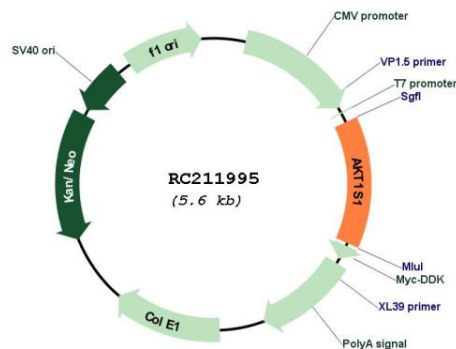
ORF Size: 768 bp

OTI Disclaimer: Due to the inherent nature of this plasmid, standard methods to replicate additional amounts of DNA in E. coli are highly likely to result in mutations and/or rearrangements. Therefore, OriGene does not guarantee the capability to replicate this plasmid DNA. Additional amounts of DNA can be purchased from OriGene with batch-specific, full-sequence verification at a reduced cost. Please contact our customer care team at custsupport@origene.com or by calling 301.340.3188 option 3 for pricing and delivery.

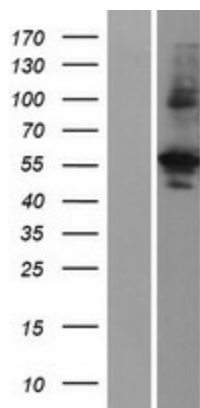
The molecular sequence of this clone aligns with the gene accession number as a point of reference only. However, individual transcript sequences of the same gene can differ through naturally occurring variations (e.g. polymorphisms), each with its own valid existence. This clone is substantially in agreement with the reference, but a complete review of all prevailing variants is recommended prior to use. [More info](#)

OTI Annotation: This clone was engineered to express the complete ORF with an expression tag. Expression varies depending on the nature of the gene.

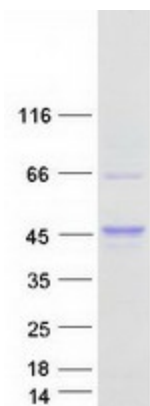
Components:	The ORF clone is ion-exchange column purified and shipped in a 2D barcoded Matrix tube containing 10ug of transfection-ready, dried plasmid DNA (reconstitute with 100 ul of water).
Reconstitution Method:	<ol style="list-style-type: none"> 1. Centrifuge at 5,000xg for 5min. 2. Carefully open the tube and add 100ul of sterile water to dissolve the DNA. 3. Close the tube and incubate for 10 minutes at room temperature. 4. Briefly vortex the tube and then do a quick spin (less than 5000xg) to concentrate the liquid at the bottom. 5. Store the suspended plasmid at -20°C. The DNA is stable for at least one year from date of shipping when stored at -20°C.
RefSeq:	<u>NM_001098632.2</u>
RefSeq Size:	2033 bp
RefSeq ORF:	771 bp
Locus ID:	84335
UniProt ID:	<u>Q96B36</u>
Cytogenetics:	19q13.33
MW:	27.2 kDa
Gene Summary:	AKT1S1 is a proline-rich substrate of AKT (MIM 164730) that binds 14-3-3 protein (see YWHAH, MIM 113508) when phosphorylated (Kovacina et al., 2003 [PubMed 12524439]).[supplied by OMIM, Mar 2008]

Product images:


Circular map for RC211995



Western blot validation of overexpression lysate (Cat# [LY420655]) using anti-DDK antibody (Cat# [TA50011-100]). Left: Cell lysates from untransfected HEK293T cells; Right: Cell lysates from HEK293T cells transfected with RC211995 using transfection reagent MegaTran 2.0 (Cat# [TT210002]).



Coomassie blue staining of purified AKT1S1 protein (Cat# [TP311995]). The protein was produced from HEK293T cells transfected with AKT1S1 cDNA clone (Cat# RC211995) using MegaTran 2.0 (Cat# [TT210002]).