

## Product datasheet for RC211994

### Nidogen 2 (NID2) (NM\_007361) Human Tagged ORF Clone

#### Product data:

Product Type:	Expression Plasmids
Product Name:	Nidogen 2 (NID2) (NM_007361) Human Tagged ORF Clone
Tag:	Myc-DDK
Symbol:	Nidogen 2
Synonyms:	NID-2
Mammalian Cell Selection:	Neomycin
Vector:	pCMV6-Entry (PS100001)
E. coli Selection:	Kanamycin (25 ug/mL)
ORF Nucleotide Sequence:	>RC211994 representing NM_007361 Red=Cloning site Blue=ORF Green=Tags(s)

TTTTGTAATACGACTCACTATAGGGCGGCCGGAATTCGTCGACTGGATCCGGTACCGAGGAGATCTGCC  
GCC**CGATCGCC**

ATGGAGGGGGACCGGGTGGCCGGGCGGCCGGTGTCTGTCGTTACCAGTGCTACTGCTGCTGCAGTTGC  
TAATGTTGCGGGCCGGCGCTGCACCCAGACGAGCTCTCCACACGGGGAGTCGTGGGGGACCACT  
CCTGCAGGAAGGCGACGACGAAAGCTCAGCCGTGGTGAAGCTGGCGAATCCCCTGCATTCTACGAAGCC  
CGATTCAGCAACCTCTACGTGGGCACCAACGGCATCATCTCCACTCAGGACTTCCCAGGGAAACGCAGT  
ATGTGGACTATGATTTCCCACCGACTTCCCGCCATCGCCCTTTTCTGGCGGACATCGACACGAGCCA  
CGGCAGAGGCCGAGTCTGTACCGAGAGGACACCTCCCCCGCAGTGTGGCCTGGCCGCCGCTATGTG  
CGCGCTGGCTTCCCGCGCTCTGCGCGCTTACCCCCACCCACGCCTTCTGGCCACCTGGGAGCAGGTAG  
GCGCTTACGAGGAGGTCAAGCGCGGGCGCTGCCTCGGGAGAGCTGAACACTTTCAGGCACTTTTGGC  
ATCTGATGGGTCTGATAGCTACGCCCTCTTTCTTATCCTGCCAACGGCCTGCAGTTCCTTGAACCCGC  
CCCAAAGAGTCTTACAATGTCCAGCTTCAGCTTCAGCTCGGGTGGGCTTCTGCCAGGGGAGGCTGATG  
ATCTGAAGTCAGAAGGACCATATTTAGCTTACTAGCACTGAACAGTCTGTGAAAAATCTCTATCACT  
AAGCAACCTGGGATCCCTGGAGTGTGGCTTTCCATATCGGCAGCACTTCCCCTGGACAATGTCAGG  
CCAGCTGCAGTTGGAGACCTTCCGCTGCCACTCTTCTGTTCCCCTGGGACGTTCCCTTACCCATGTA  
CAGCCCTGAAAAGTGACTATAATGAGGACAATTTGGATTACTACGATGTGAATGAGGAGGAAGCTGAATA  
CCTTCCGGGTGAACAGAGGAGGATTGAATGGCCACAGCAGCATTGATGTTTCTTCCAATCCAAAGTG  
GATACAAAGCCTTTAGAGGAATCTTCCACCTTGGATCCTCACACCAAAGAAGGAACATCTCTGGGAGAGG  
TAGGGGGCCAGATTTAAAAGGCCAAGTTGAGCCCTGGGATGAGAGAGAGACCAGAAGCCAGCTCCACC  
AGAGGTAGACAGAGATTCAGTGGCTCCTTCTGGGAAACCCACCACCGTACCCGAAAACGGAAGCATC  
CAGCCCTACCCAGATGGAGGGCCAGTGCCTTCGGAAATGGATGTTCCCCAGCTCATCTGAAGAAGAAA  
TTGTTCTTGAAGTTACCCTGCTTCAAGTACACTACACCCTAAGTCGAGGGACGATGAGGTGGGACT  
GGAAGACAACATAGGTTCCAACCCGAGGTCTTACGTATAATGCTGCCAACAAAGGAACCTGTGAACAC



[View online »](#)

AACCACAGACAATGCTCCCGCATGCCTTCTGCACGGACTATGCCACTGGCTTCTGCTGCCACTGCCAAT  
CCAAGTTTATGGAAATGGGAAGCACTGTCTGCCTGAGGGGGCACCTCACCGAGTGAATGGGAAAGTGAG  
TGGCCACCTCCACGTGGGCCATACACCCGTGCACTTCACTGATGTGGACCTGCATGCGTATATCGTGGGC  
AATGATGGCAGAGCCTACACGGCCATCAGCCACATCCCACAGCCAGCAGCCAGGCCCTCTCCCTCA  
CACCAATTGGAGGCTGTTTGGCTGGCTCTTGTCTTGTAGAAAACTGGCTCTGAGAAGGCTTCAGCCT  
CGCAGGTGCTGCCTTACCCATGACATGGAAGTTACATTCTACCCGGGAGAGGAGACGGTTCGTACT  
CAAACCTGTGAGGGACTTGACCCAGAGAACTACCTGAGCATTAAAGACCAACATTCAAGGCCAGGTGCCTT  
AGTCCCAGCAAATTTACAGCCACATCTCTCCCTACAAGGAGCTGTACCACTACTCCGACTCCACTGT  
GACCTCTACAAGTTCCAGAGACTACTCTGACTTTTGGTGAATCAACCAAACATGGTCTACCCGATC  
CACCAGAACATCACTTACCAGGTGTGCAGGCACGCCCCAGACACCCGCTCTTCCCACCACCCAGCAGC  
TGAACGTGGACCGGTCTTTGCCTGTATAATGACGAAGAAAGAGTGCTTAGATTTGCTGTGACCAATCA  
AATTGGCCCGGTCAAAGAAGATTCAGACCCCACTCCGGGAATCCTTGTATGATGGGAGCCACATGTGT  
GACACAACAGCACGGTCCATCCAGGGACAGGTGTAGATTACACCTGTGAGTGCGCATCTGGGTACCAGG  
GAGATGGACGGAAGTGTGTGGATGAAAATGAATGTGCAACTGGCTTTCATCGCTGTGCCCAACTCTGT  
ATGTATCAACTTGCTGGAAGCTACAGGTGTGAGTGCCGGAGTGGTTATGAGTTTGCAGATGACCCGAT  
ACTTGCATCTTGATCACCCACCTGCCAACCCCTGTGAGGATGGCAGTCATACCTGTGCTCTGCTGGGC  
AGGCCCGGTGTGTTACCATGGAGGCAGCACGTTCACTGTGCCTGCCTGCCTGGTTATGCCGGCGATGG  
GCACCACTGCACTGATGTAGATGAATGCTCAGAAAACAGATGTCACCCCTGCAGCTACCTGTACAATACT  
CCTGGTTCCTTCTCTGCCGTTGTCAACCCGGATATTAAGGGATGGATTTCACTGCATACCTGACTCCA  
CCTCAAGCCTGACACCCTGTGAACAACAGCAGCGCCATGCCAGGCCAGTATGCCTACCTGGGGCCCCG  
GTTCCACATCCCCAATGCGACGAGCAGGGCAACTTCTGCCCTACAGTGTGATGGCAGCACTGGTTTC  
TGCTGGTGCCTGGACCTGATGGTCAATGAAGTTCTGGTACCCAGACTCCACCTGGCTCCACCCCGCCT  
ACTGTGGACCATCACCAGAGCCACCCAGAGGCCCGCCAGCCATCTGTGAGCGCTGGAGGAAAACCTGCT  
GGAGCACTACGGTGGCACCCCGGGATGACCAGTACGTGCCCCAGTGGCAGTACCTGGGCCACTTCATC  
CCCTGCAGTGCCACGGAAGAGCGACTTCTGCTGGTGTGGACAAAGATGGCAGAGAGGTGCAGGGCA  
CCCGCTCCAGCCAGGCACCACCCTGCGTGTATACCCACCGTCGCTCCACCCATGGTCCGGCCACGCC  
CCGGCCAGATGTGACCCCTCCATCTGTGGGCACCTTCTGCTCTATACTCAGGGCCAGCAGATTGGCTAC  
TTACCCCTCAATGGCACCAGGCTTCAGAAGGATGCAGCTAAGACCCTGCTGTCTCTGCATGGCTCCATAA  
TCGTGGGAATTGATTACGACTGCCGGGAGAGGATGGTGTACTGGACAGATGTTGCTGGACGGACAATCAG  
CCGTGCTGGTCTGGAAGTGGGAGCAGAGCCTGAGACGATCGTGAATTCAGGTCTGATAAGCCCTGAAGGA  
CTTGCCATAGACCACATCCGAGAACAATGTACTGGACGGACAGTGTCTGGATAAGATAGAGAGCGCCC  
TGCTGGATGGCTCTGAGCGCAAGTCTCTTCTACACAGATCTGGTGAATCCCCGTGCCATCGCTGTGGA  
TCCAATCCGAGGCAACTGTACTGGACAGACTGGAATAGAGAAGCTCCTAAAATTGAAACGTCATCTTTA  
GATGGAGAAAACAGAAGAATTCTGATCAATACAGACATTGGATTGCCAATGGCTTAACCTTTGACCCTT  
TCTCTAAACTGCTCTGCTGGCAGATGCAGGAACCAAAAACTGGAGTGTACACTACCTGATGGAAGTGG  
ACGGCGTGTCAATCAAAACAACCTCAAGTACCCCTTACGATCGTAAGCTATGCAGATCACTTCTACCAC  
ACAGACTGGAGGAGGATGGTGTGTATCAGTAAATAACATAGTGGCCAGTTTACTGATGAGTATCTCC  
CAGAACAACGATCTCACCTCTACGGGATAACTGCAGTCTACCCCTACTGCCCAACAGGAAGAAAG

ACGCGTACGCGGCCGCTCGAGCAGAACTCATCTCAGAAGAGGATCTGGCAGCAAATGATATCCTGGATT  
ACAAGGATGACGACGATAAGGTTTAA

**Protein Sequence:** >RC211994 representing NM\_007361  
Red=Cloning site Green=Tags(s)

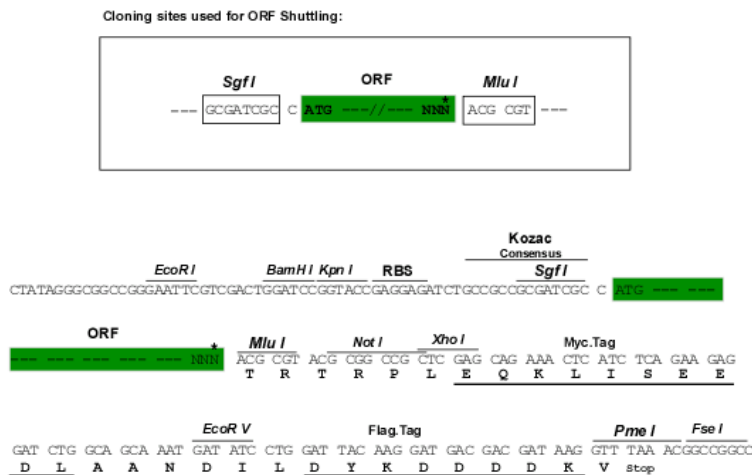
```
MEGDRVAGRPVLSLPLVLLLLQLLMLRAAALHPDELFPHGESWGDQLLEGGDESSAVVKLANPLHFYEA
RFSNLVYGTNGIISTQDFPRETQYVDYDFPTDFPAIAPFLADIDTSHGRGRVLYREDTSPAVLGLAARYV
RAGFPRSARFTPTHAFLATWEQVAYEEVKRGALPSGELNTFQAVLASDGSYSALFLYPANGLQFLGTR
PKEYSYNVLQLPARVGFRCGEADDLKSEGPYFSLTSTEQSVKNL YQLSNLGIPIGVWAFHIGSTSPLDNVR
PAAVGDLSAAHSSVPLGRSF SHATALESYDYNEDNLDYYDVNEEEAEYLPGEPEEALNGHSSIDVSFQSKV
DTKPLEESSTLDPHTKEGTSLSGEVGGPDLKQVPEPWERETRSPAPPEVDRDSLAPSWETPPYPENGSI
QPYPDGGPVPSEMDVPPAHPEEEIVLRSYPASGHTTPLSRGTYEVGLEDNIGSNTEVFTYNAANKETCEH
NHRQCSRHAFCTDYATGFCCHCQSKFYGNKGHCLPEGAPHRVNGKVSGLHVGHTPVHFTDVLHAYIVG
NDGRAYTAISHIPQPAQAALLPLTPIIGLFGWLFALKPGSENGFSLAGAAFTHDMEVTFYPGEETVRIT
QTAEGLDPENYL SIKTNIQGQVPYPANF TAHISPYKEL YHYSdstvtstSSRDYSLTFGAINQTWSYRI
HQNITYQVCRHAPRHSFPTTQQLNVDRV FALYNDEERVLRFAVTNQIGPVKEDSDPTPGNPCYDGSIMC
DTTARCHPGTGVDYTCCEASGYQDGRNCVDENECATGFHRCGPNSVCINLPGSYRCECRSGYEFADDRH
TCILITPANPCEDGSHTCAPAGQARCVHHGGSTFSCACLPGYAGDGHQCTDVDECESENCHPAATCYNT
PGFSFCRCQPGYGDGFQCPDSTSSLTPCEQQQRHAQAQYAYPGARFHIPQCDEQGNFLPLQCHGSTGF
CWCVDPDGHEVPGTQTPPGSTPPHCGPSPEPTQRPPTICERWRENLEHYGGTPRDDQYVPQCDDLGHFI
PLQCHGKSDFCWCVDKDGREVGQTRSQP GTTPACIPTVAPPMVRPTPRPDVTPPSVGTFLLYTQGGQIGY
LPLNGTRLQKDAAKTLLSLHGSIIV GIDYDCRERMVYWDVAGRTISRAGLELGAEPETIVNSGLISPEG
LAIDHIRRTMYWTDVLDKIESALLDGSERKVL FYTDLVNPRAIADVPIRGNLYWTDWNREAPKIETSSL
DGENRRILINTDIGLPNGLTFDPF SKLLCWADAGTKKLECTLPDGTGRRVIQNNLKYPFSIVSYADHFYH
TDWRRDGVVSVNKHSGQFTDEYLPEQRSHLYGITAVVYPCPTGRK
```

TRTRPLEQKLISEEDLAANDILDYKDDDDKV

**Chromatograms:** [https://cdn.origene.com/chromatograms/mk6713\\_g07.zip](https://cdn.origene.com/chromatograms/mk6713_g07.zip)

**Restriction Sites:** SgfI-MluI

**Cloning Scheme:**



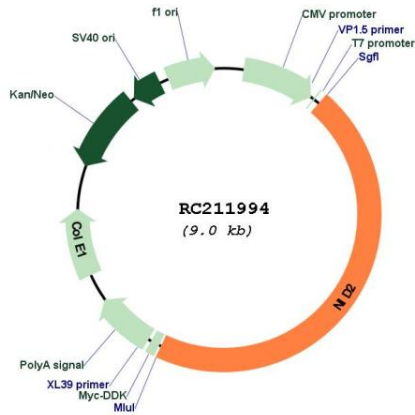
\* The last codon before the Stop codon of the ORF

**ACCN:** NM\_007361

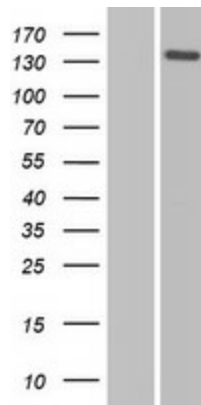
**ORF Size:** 4125 bp

<b>OTI Disclaimer:</b>	The molecular sequence of this clone aligns with the gene accession number as a point of reference only. However, individual transcript sequences of the same gene can differ through naturally occurring variations (e.g. polymorphisms), each with its own valid existence. This clone is substantially in agreement with the reference, but a complete review of all prevailing variants is recommended prior to use. <a href="#">More info</a>
<b>OTI Annotation:</b>	This clone was engineered to express the complete ORF with an expression tag. Expression varies depending on the nature of the gene.
<b>Components:</b>	The ORF clone is ion-exchange column purified and shipped in a 2D barcoded Matrix tube containing 10ug of transfection-ready, dried plasmid DNA (reconstitute with 100 ul of water).
<b>Reconstitution Method:</b>	<ol style="list-style-type: none"><li>1. Centrifuge at 5,000xg for 5min.</li><li>2. Carefully open the tube and add 100ul of sterile water to dissolve the DNA.</li><li>3. Close the tube and incubate for 10 minutes at room temperature.</li><li>4. Briefly vortex the tube and then do a quick spin (less than 5000xg) to concentrate the liquid at the bottom.</li><li>5. Store the suspended plasmid at -20°C. The DNA is stable for at least one year from date of shipping when stored at -20°C.</li></ol>
<b>RefSeq:</b>	<a href="#">NM_007361.2</a> , <a href="#">NP_031387.2</a>
<b>RefSeq Size:</b>	5065 bp
<b>RefSeq ORF:</b>	4128 bp
<b>Locus ID:</b>	22795
<b>UniProt ID:</b>	<a href="#">Q14112</a>
<b>Cytogenetics:</b>	14q22.1
<b>Domains:</b>	Idl_recept_b, thyroglobulin_1, EGF_CA, NIDO, EGF, EGF, G2F
<b>Protein Families:</b>	Druggable Genome, Secreted Protein
<b>MW:</b>	151.29 kDa
<b>Gene Summary:</b>	This gene encodes a member of the nidogen family of basement membrane proteins. This protein is a cell-adhesion protein that binds collagens I and IV and laminin and may be involved in maintaining the structure of the basement membrane.[provided by RefSeq, Jun 2010]

Product images:



Circular map for RC211994



Western blot validation of overexpression lysate (Cat# [LY416012]) using anti-DDK antibody (Cat# [TA50011-100]). Left: Cell lysates from untransfected HEK293T cells; Right: Cell lysates from HEK293T cells transfected with RC211994 using transfection reagent MegaTran 2.0 (Cat# [TT210002]).